



# Multimodal Transportation Study of the North Valleys Region

# Introduction



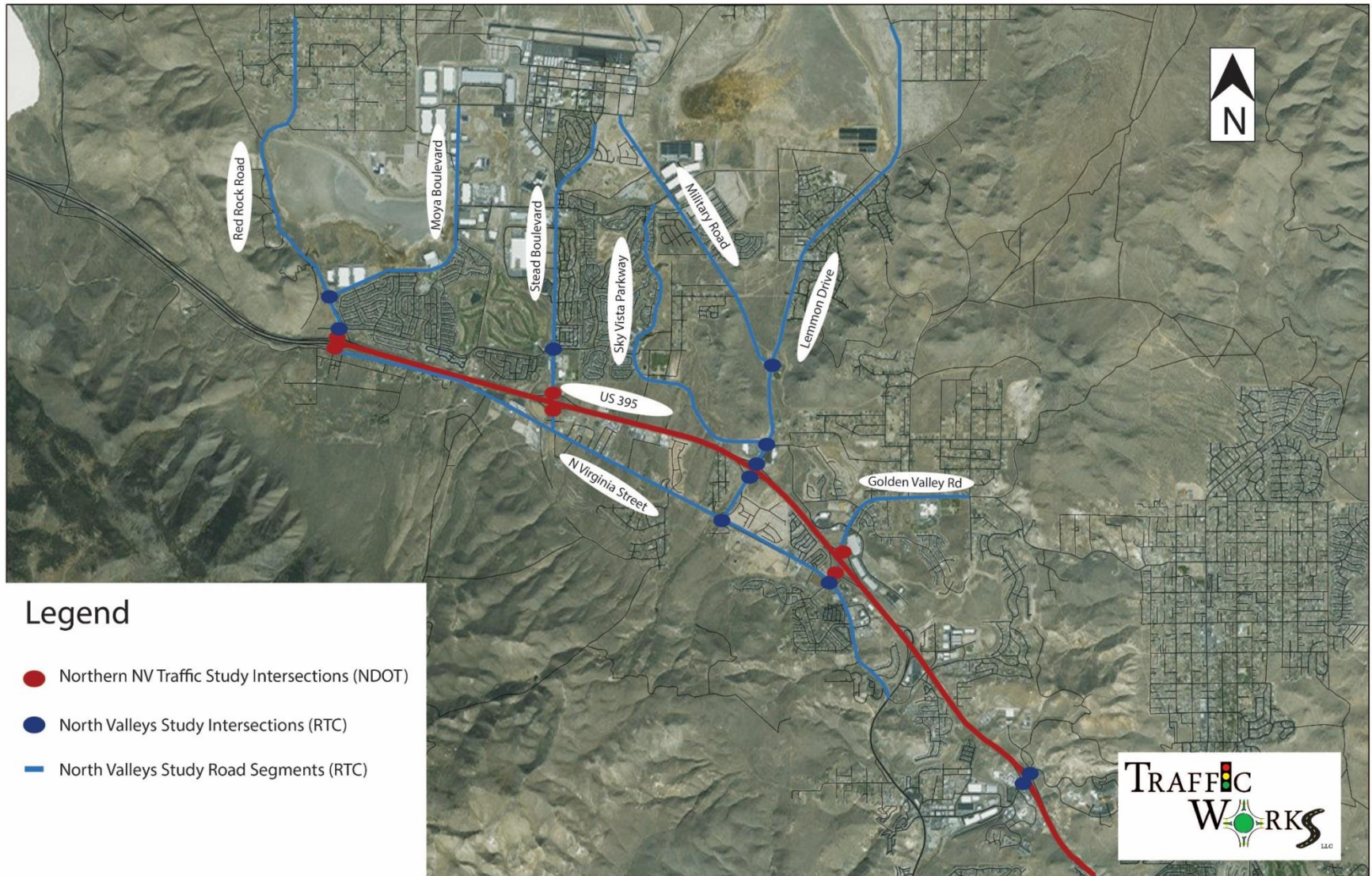
- Develop a program of short- and long-term improvements for regional roads that supports quality of life
- The study will focus on traffic operations analysis and improvements, safety improvements, pedestrian and bicycle connectivity and transit service needs.



# Study Area

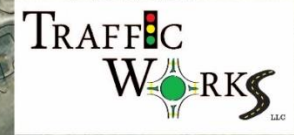


# Study Roadways & Intersections



## Legend

- Northern NV Traffic Study Intersections (NDOT)
- North Valleys Study Intersections (RTC)
- North Valleys Study Road Segments (RTC)



# Existing and Future Conditions Analysis



- Existing Studies
- Traffic Analysis
- Land Use Analysis
- Safety Analysis
- Transit Analysis
- Pedestrian/Bicycle Analysis



# Public and Agency Involvement



- Project Technical Advisory Committee Meetings (Kick-off 11-2-2015, bi-monthly after)
- NDOT Northern Nevada Traffic Study (Kick-off 12-10-2015)
- RTC Technical Advisory Committee (RTC TAC) and Citizens Multimodal Advisory Committee (CMAC) Meetings (12-2-2015)
- Stakeholder Meetings (12-8-2015)
- Golden Valley HOA (11-12-2015)
- RTC CMAC (12-2-15)
- North Valleys CAB (12-14-2015)
- Ward 4 NAB (12-17-2015)
- Public Information Meetings (1/2-2016)



# Example- Signage



Looking west  
Free flow left turn to  
southbound US395

Looking east  
Stop controlled



Rectangle

# Example- US 395 Southbound Congestion







# Develop and Evaluate Alternatives



- Develop a vision statement and associated goals for the study
- Roadway and Traffic Improvements
- Transit Improvements
- Pedestrian and Bicycle Improvements



# Completed Tasks



- ✓ Existing Turning Movement Counts
- ✓ Roadway AADT's
- ✓ AM and PM Peak Hour Existing Synchro Models
- ✓ Existing Roadway and Intersection Level of Service Analysis
- ✓ Preliminary Problem Areas Identification (Traffic Operations)
- ✓ Crash Analysis

# Roadway LOS



Roadway Segment	Location	Class	Lanes	Access Control	2014 AADT	
					AADT	LOS
Golden Valley Road	N/O 395	Arterial	4	MAC	13,500	C
Golden Valley Road	S/O 395	Arterial	2	MAC	6,800	C
Lemmon Drive	N/O Military Road	Arterial	4	MAC	9,800	B
Lemmon Drive	S/O Military Road	Arterial	4	MAC	25,000	C
Military Road	W/O Lemmon Drive	Arterial	2	MAC	8,300	C
Sky Vista Parkway	W/O Lemmon Drive	Arterial	4	MAC	14,500	C
Stead Boulevard	N/O Silver Lake Road	Arterial	4	MAC	8,500	B
Stead Boulevard	S/O Silver Lake Road	Arterial	4	MAC	18,000	C
Silver Lake Road	E/O Stead Boulevard	Collector	2	LAC	6,800	C
Silver Lake Road	W/O Stead Boulevard	Collector	2	LAC	6,500	C
Red Rock Road	N/O 395	Arterial	4	MAC	3,900	B
N Virginia Street	E/O Lemmon Drive	Arterial	2/3	MAC	4,100	B
N Virginia Street	W/O Lemmon Drive	Arterial	2	MAC	1,900	B

# Intersection LOS



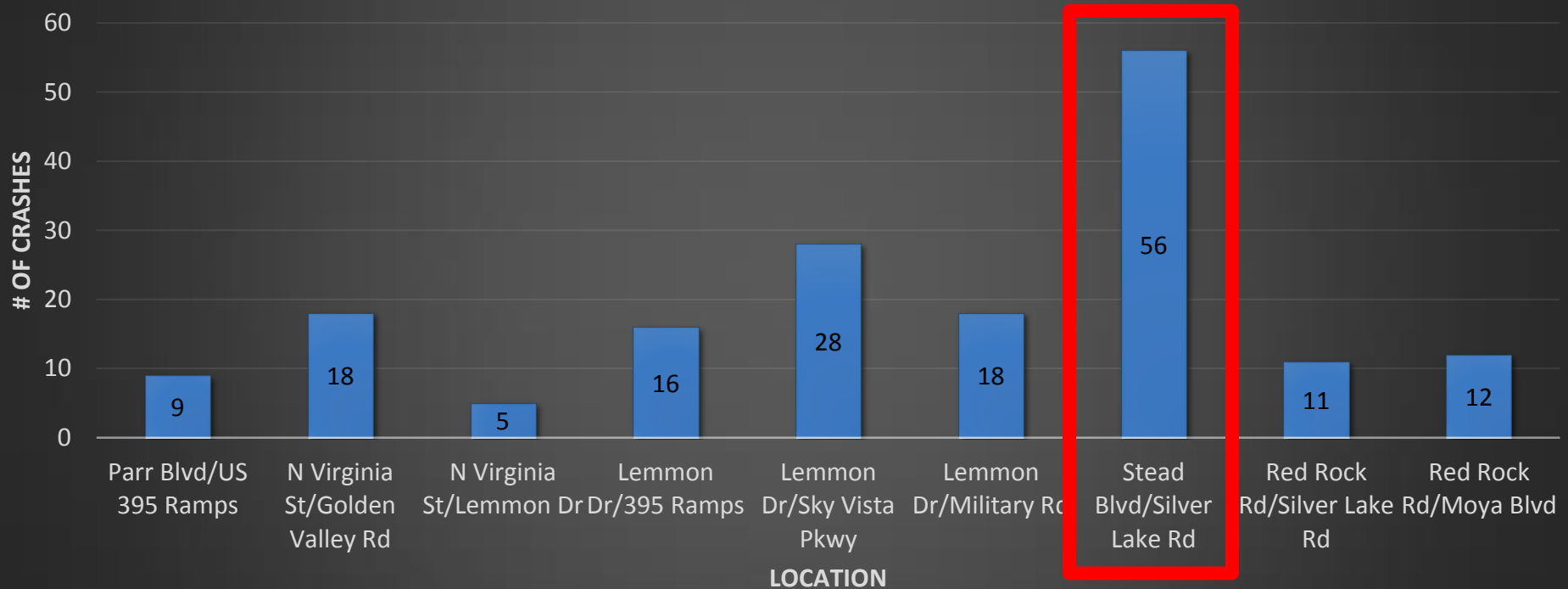
Intersection		Control	2015	
			AM Peak	PM Peak
Parr Blvd and US 395 SB Ramps	LOS	TWSC	E	F
	Delay		39.5	65.9
Parr Blvd and US 395 NB Ramps	LOS	TWSC	F	F
	Delay		59.2	149.3
N. Virginia St and Golden Valley Rd	LOS	Signal	A	A
	Delay		6.9	8.1
N. Virginia St and Lemmon Dr	LOS	AWSC	C	A
	Delay		17.8	9.0
Lemmon Dr and US 395 SB Ramps	LOS	TWSC	F	F
	Delay		>200	>200
Lemmon Dr and US 395 NB Ramps	LOS	TWSC	D	C
	Delay		29.3	15.0

Intersection		Control	2015	
			AM Peak	PM Peak
Lemmon Dr and Sky Vista Pkwy	LOS	Signal	C	D
	Delay		22.6	38.1
Lemmon Dr and Military Rd	LOS	Signal	B	B
	Delay		10.7	10.1
Stead Blvd and Silver Lake Rd	LOS	Signal	B	C
	Delay		18.0	25.5
Red Rock Rd and Silver Lake Rd	LOS	TWSC	D	D
	Delay		33.8	28.2
Red Rock Rd and Moya Blvd	LOS	TWSC	B	B
	Delay		11.0	12.4

# Crash Summary



## Summary of Crashes from August 2010- August 2015



# Stead & Silver Lake



<b>Crash Type</b>	<b>Number</b>	<b>PDO</b>	<b>Injury</b>	<b>Fatality</b>	<b>#Ped/Bike</b>
Angle	24	9	13	2	3
Head-on	2	0	2	0	0
Non-Collision	12	3	9	0	7
Rear-End	15	10	5	0	0
Sideswipe/Overtaking	2	2	0	0	0
Unknown	1	1	0	0	0

# Project Timeline



- Project coordination meeting with RTC and Cities – Month 1
- Project TAC Kickoff Meeting (continuing every other month thereafter) – Month 2
- Public Information Meeting – Month 4
- Planning Workshop – Month 6
- Draft Report – Month 9
- Revised Report – Month 10
- Final Report – Month 11





# Questions and Comments