



TECHNICAL ADVISORY COMMITTEE MEETING #2

SOUTH MEADOWS MULTIMODAL TRANSPORTATION STUDY



INTRODUCTIONS

XUAN WANG – RTC PROJECT MANAGER

LOREN CHILSON – CONSULTANT TEAM MANAGER (HEADWAY TRANSPORTATION)

DYLAN AXTELL – CONSULTANT TEAM MEMBER (HEADWAY TRANSPORTATION)

TAC MEMBER SELF INTRODUCTIONS

GOALS & VISION REVIEW

VISION STATEMENT:

Create a safe and efficient multimodal transportation system in the South Meadows to support quality of life.

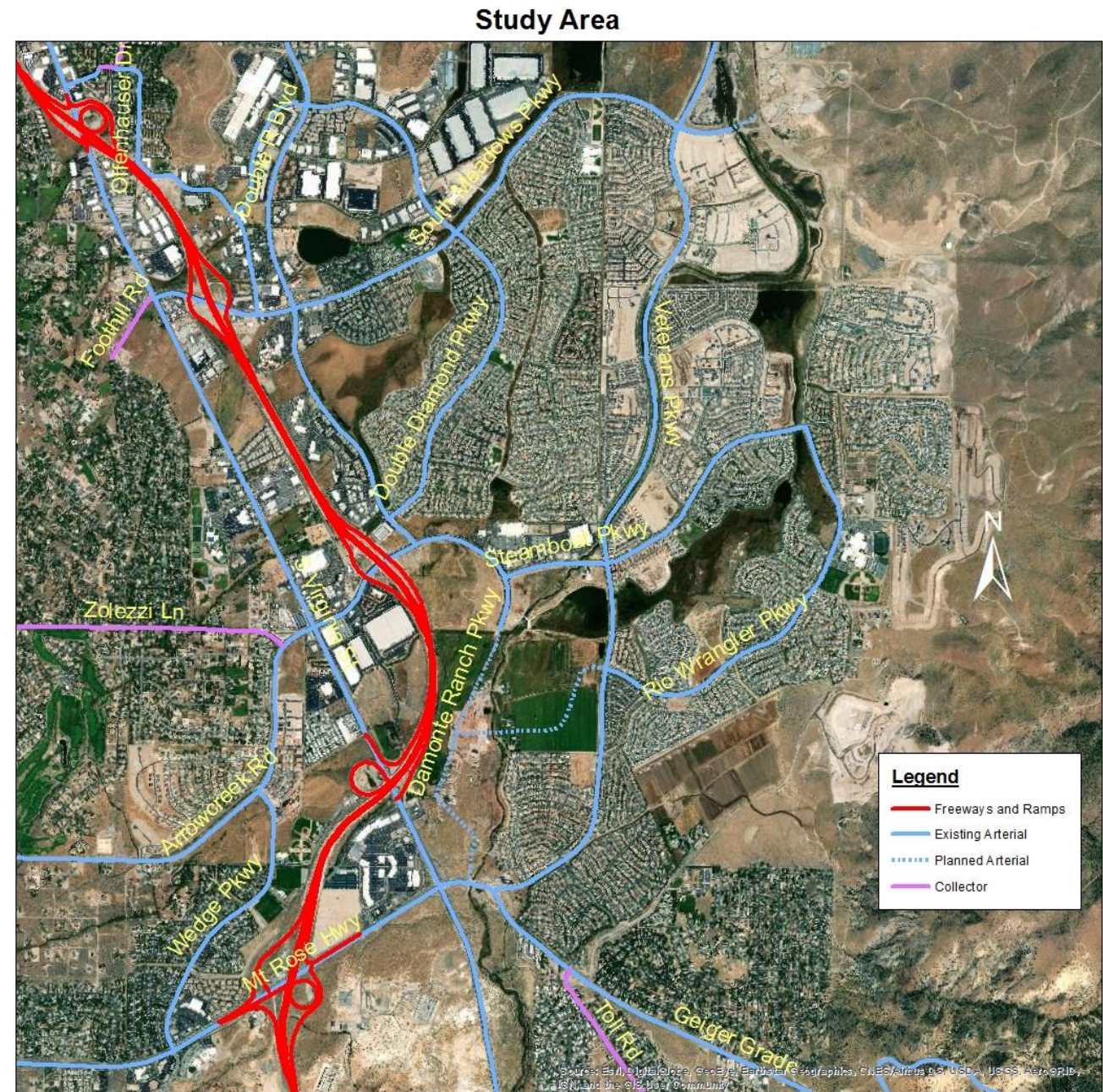
GOALS:

- Improve roadway safety for all users
- Plan regional roadway and intersection capacity improvements
- Expand pedestrian and bicycle connectivity
- Enhance public transportation connectivity and travel options

STUDY SCOPE REVIEW

OVERVIEW:

- Develop a program of near term, mid term, and long range improvements for all travel modes
- Improve safety
- Consider transportation needs for “build-out” of the south meadows



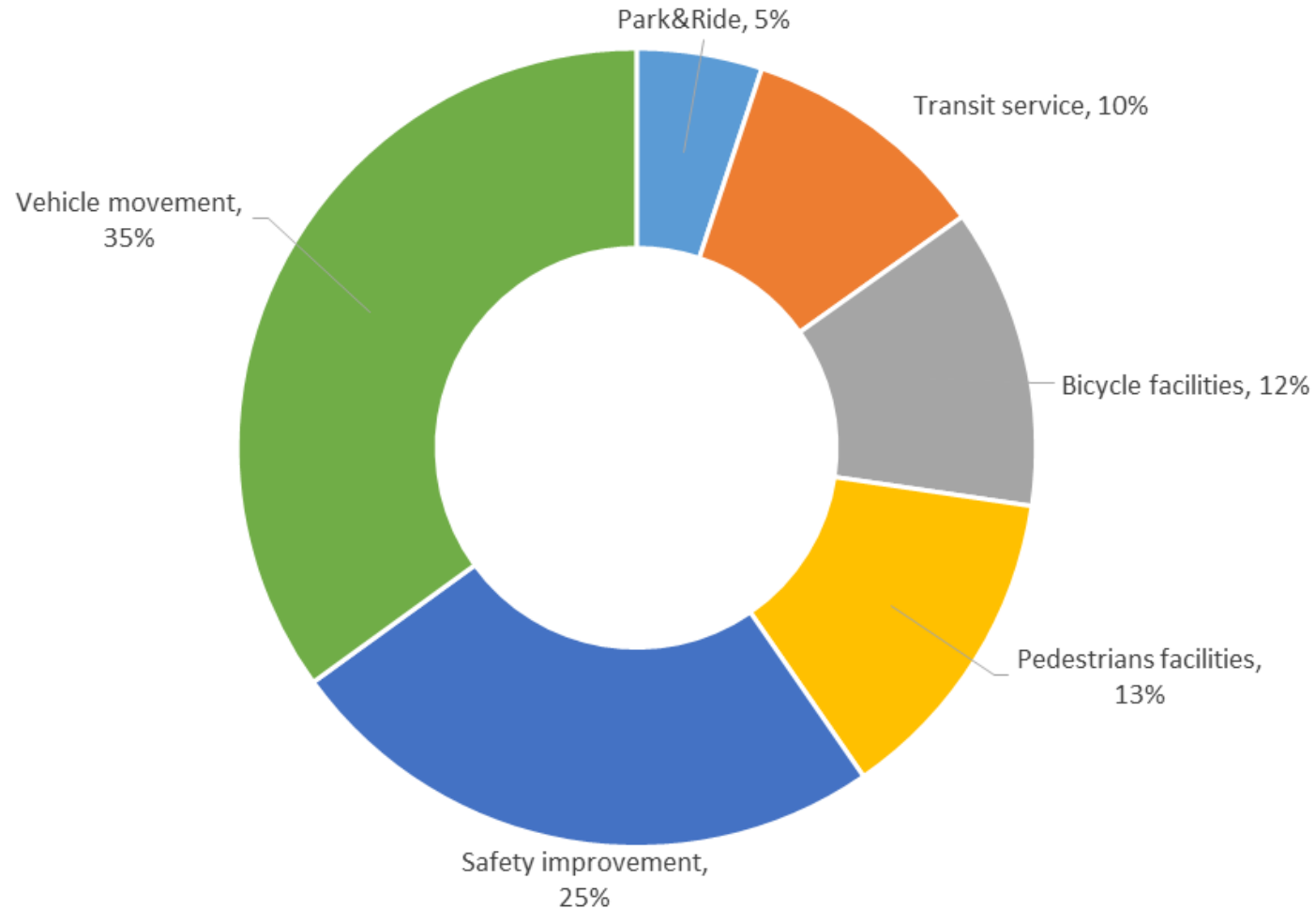
SUMMARY OF PUBLIC OUTREACH TO DATE

- Inclusion of numerous comments received
- Meeting with Hidden Valley Wild Horse Protection Fund
- Public Meeting #1 (March 26th)
- MetroQuest Survey



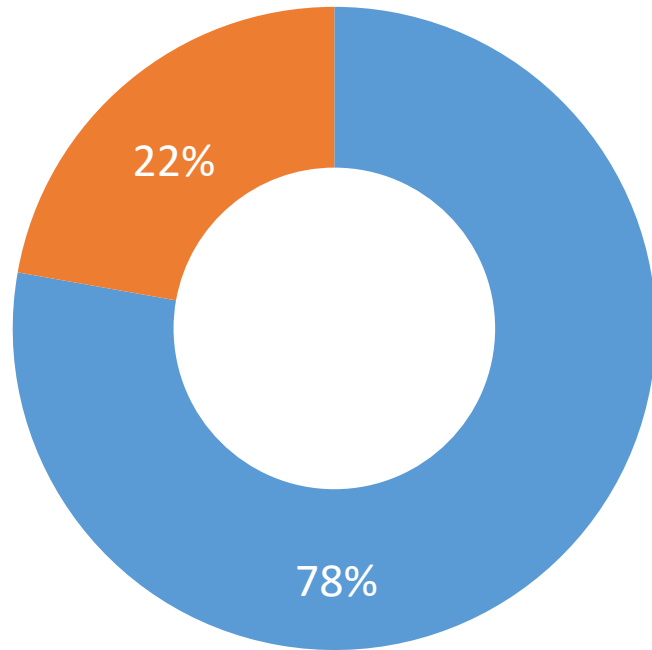
METROQUEST SURVEY SUMMARY

How would you allocate money spent on improvements?

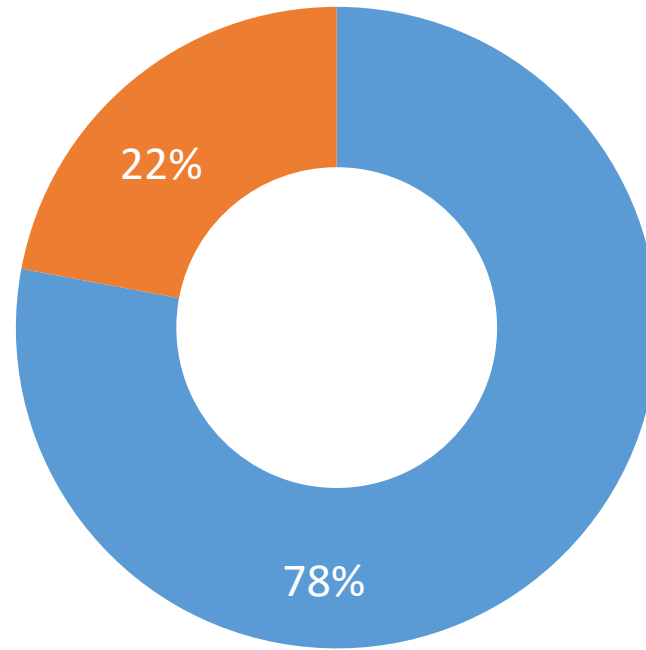


METROQUEST SURVEY SUMMARY

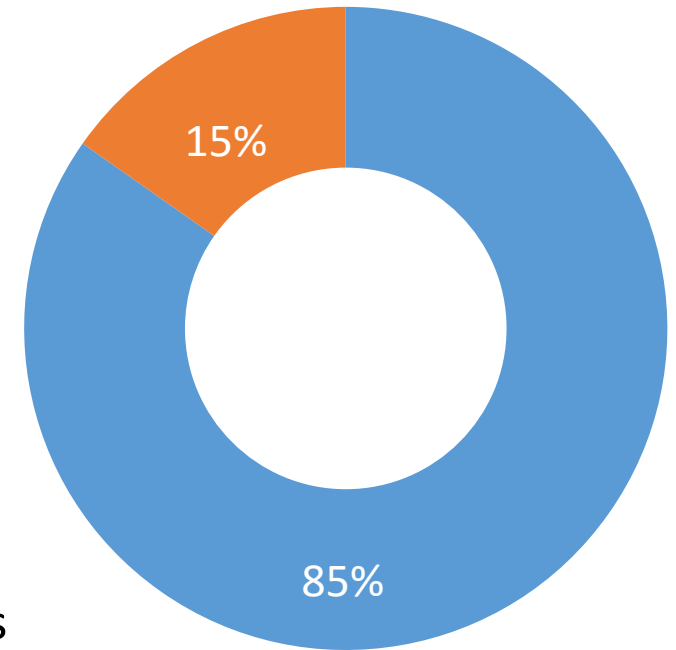
If **more RTC bus routes** were offered in the South Meadows, would you use them?



If **Park & Ride lots** were created in the South Meadows, would you use them?

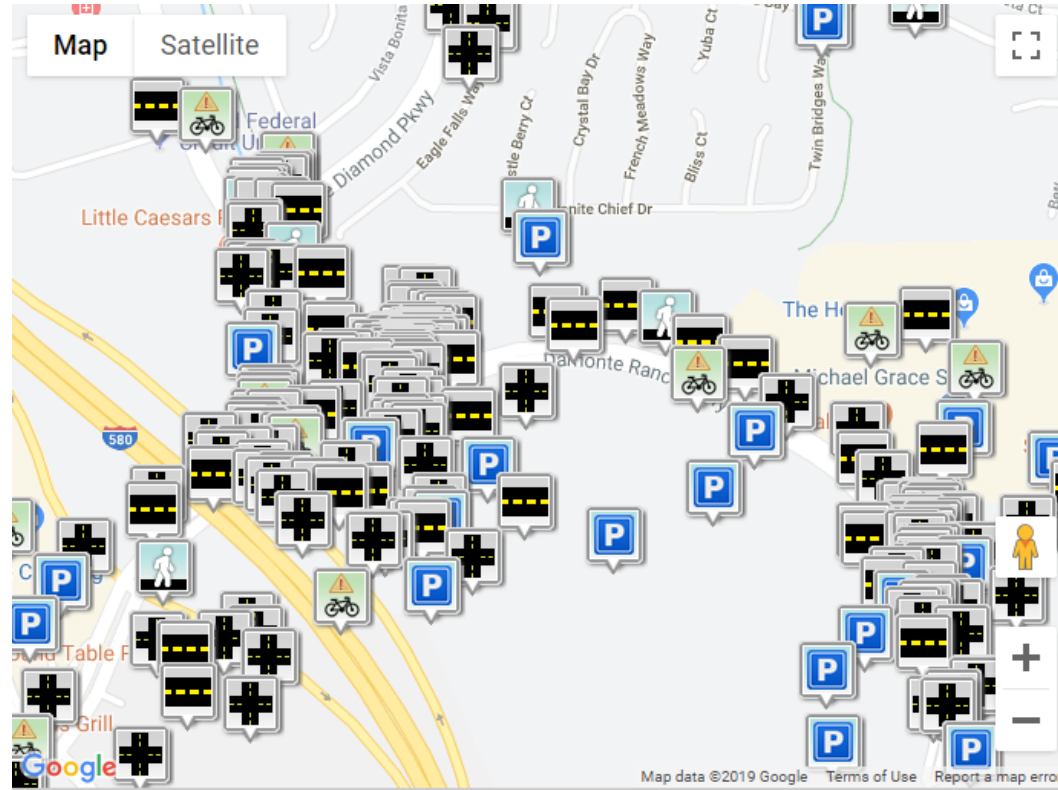


If more **van/car pool services** were available, would you use them?



■ No
■ Yes

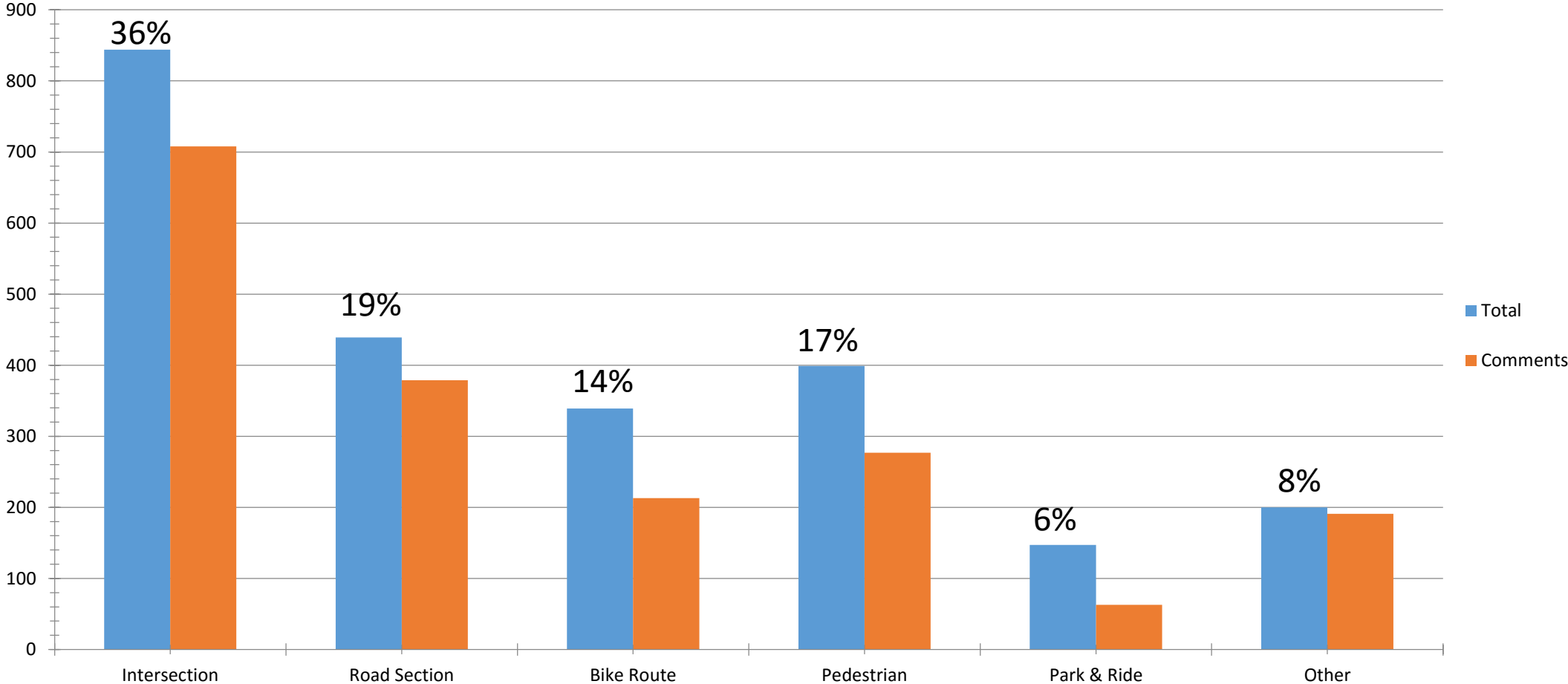
METROQUEST SURVEY SUMMARY



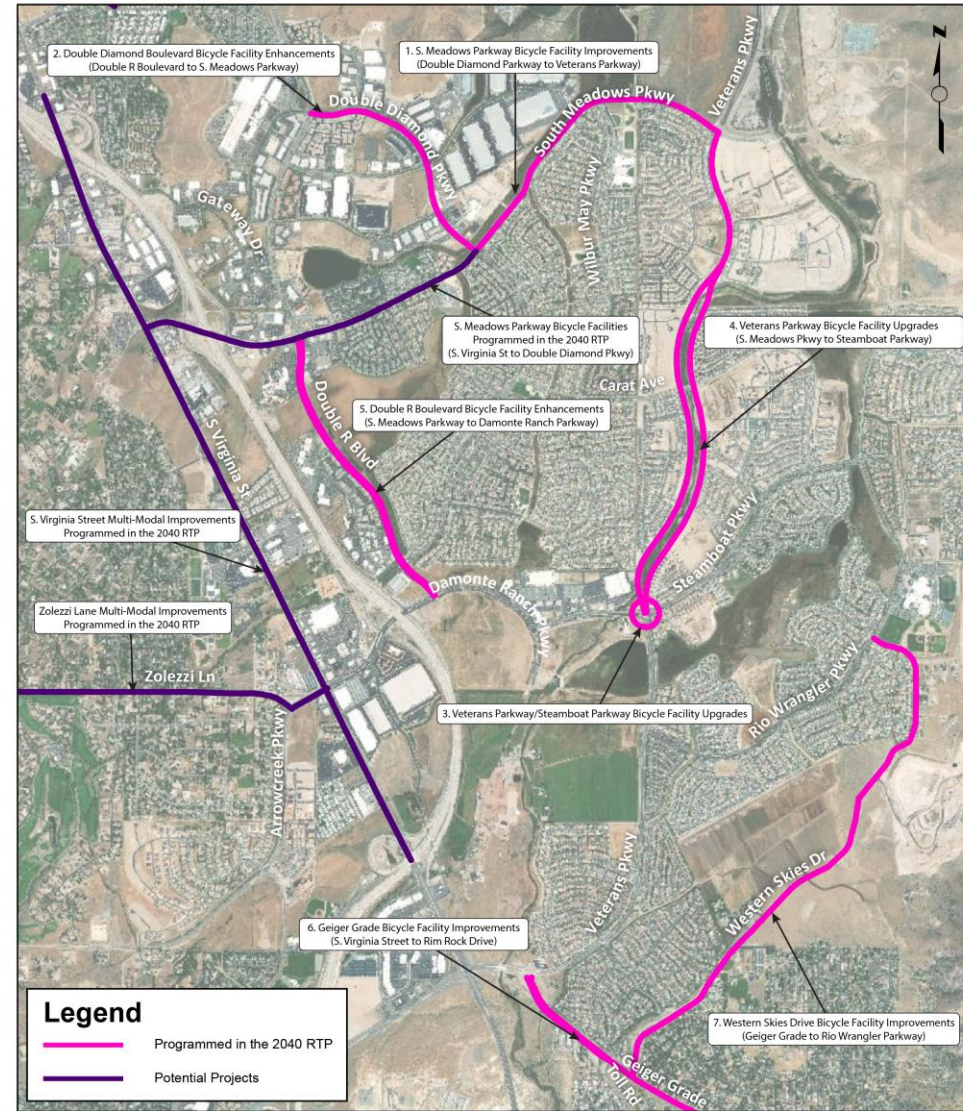
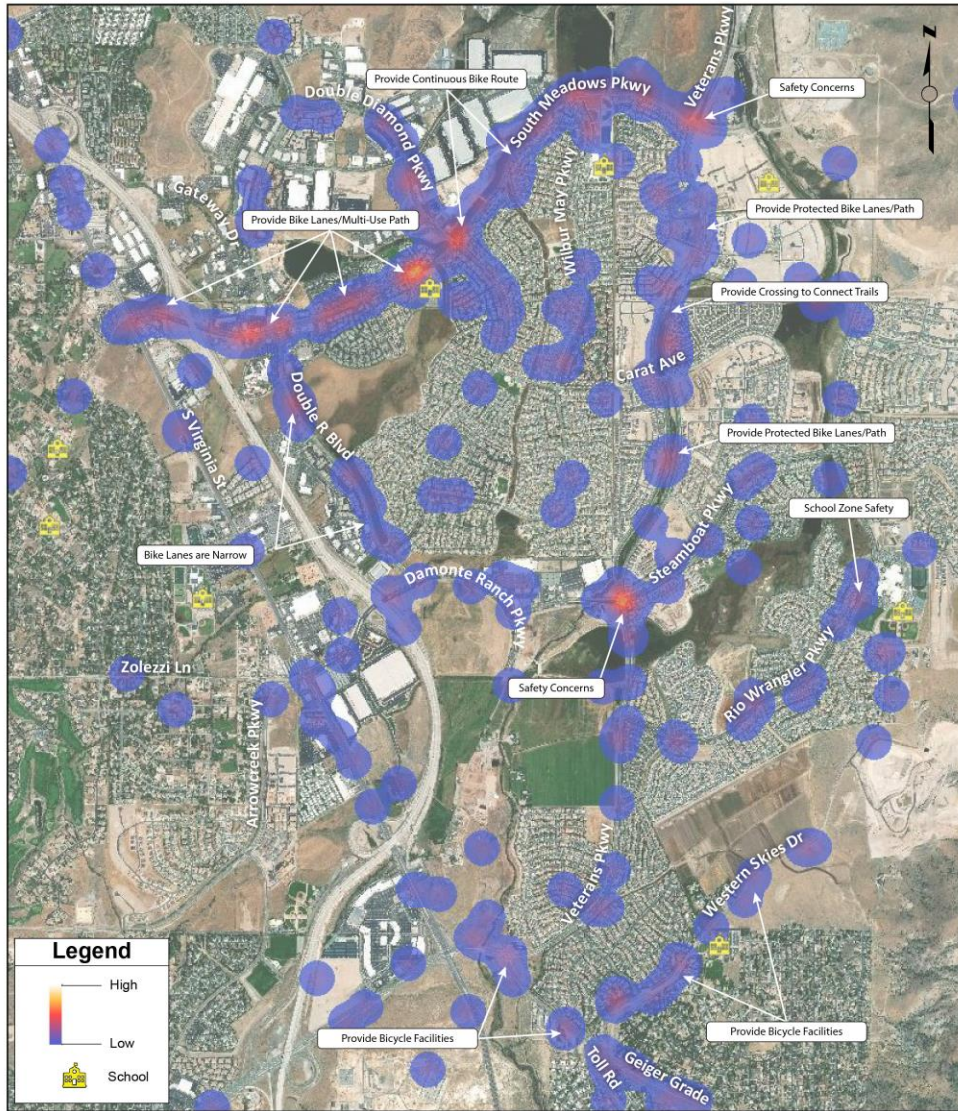
- Intersection
 - Road Section
 - Bike Route
 - Pedestrian
 - Park&Ride
 - Other
- Map Styles
MetroQuest Icons

METROQUEST SURVEY SUMMARY

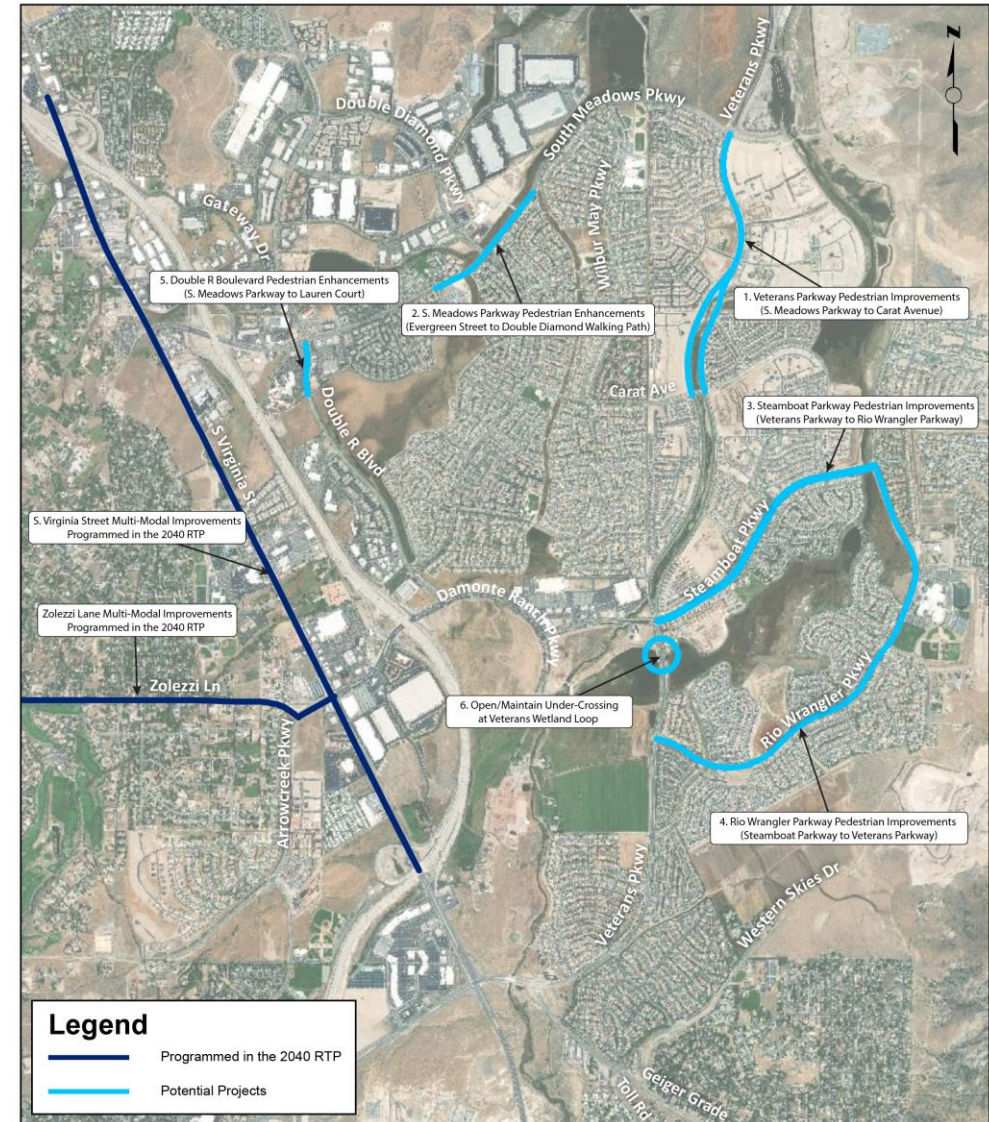
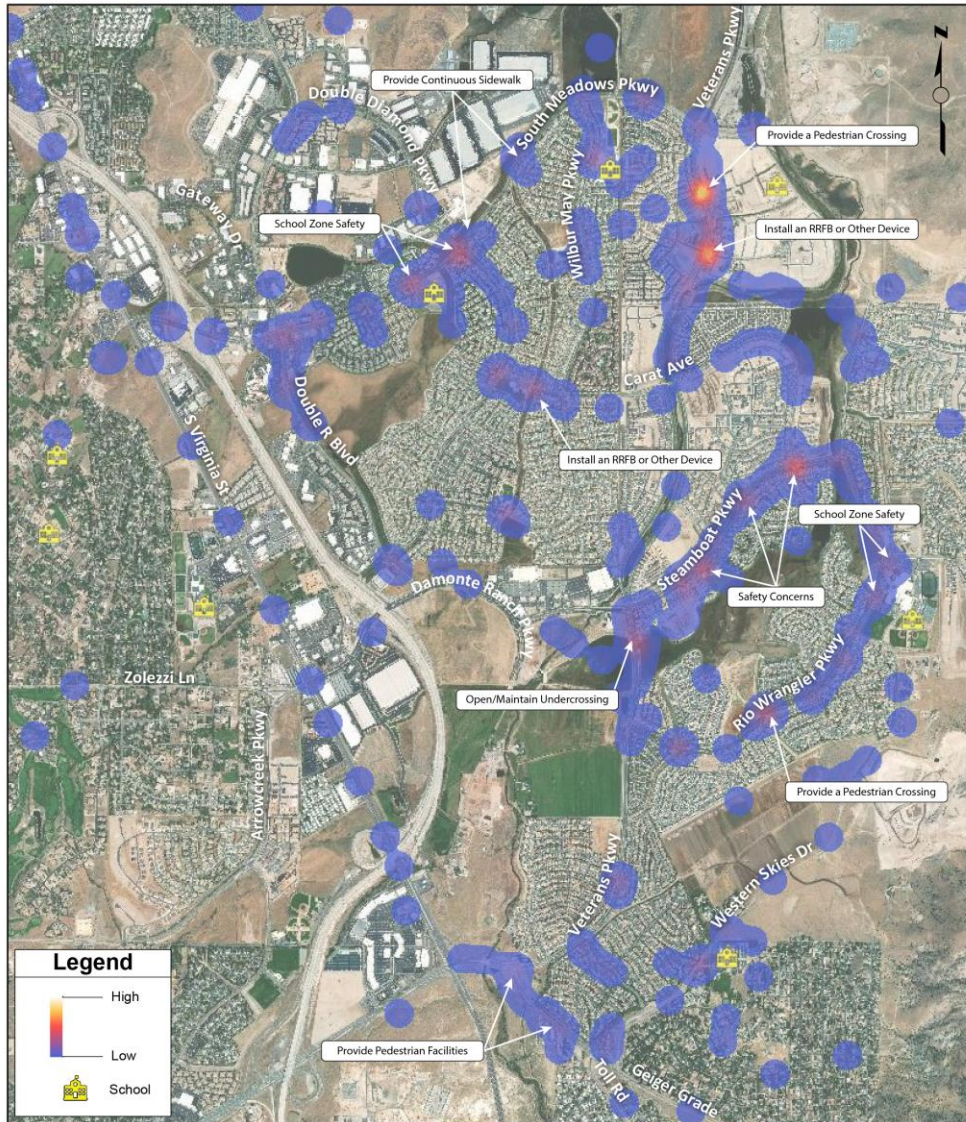
Numbers of comments received in category:



BICYCLE COMMENTS & POTENTIAL PROJECTS



PEDESTRIAN COMMENTS & POTENTIAL PROJECTS



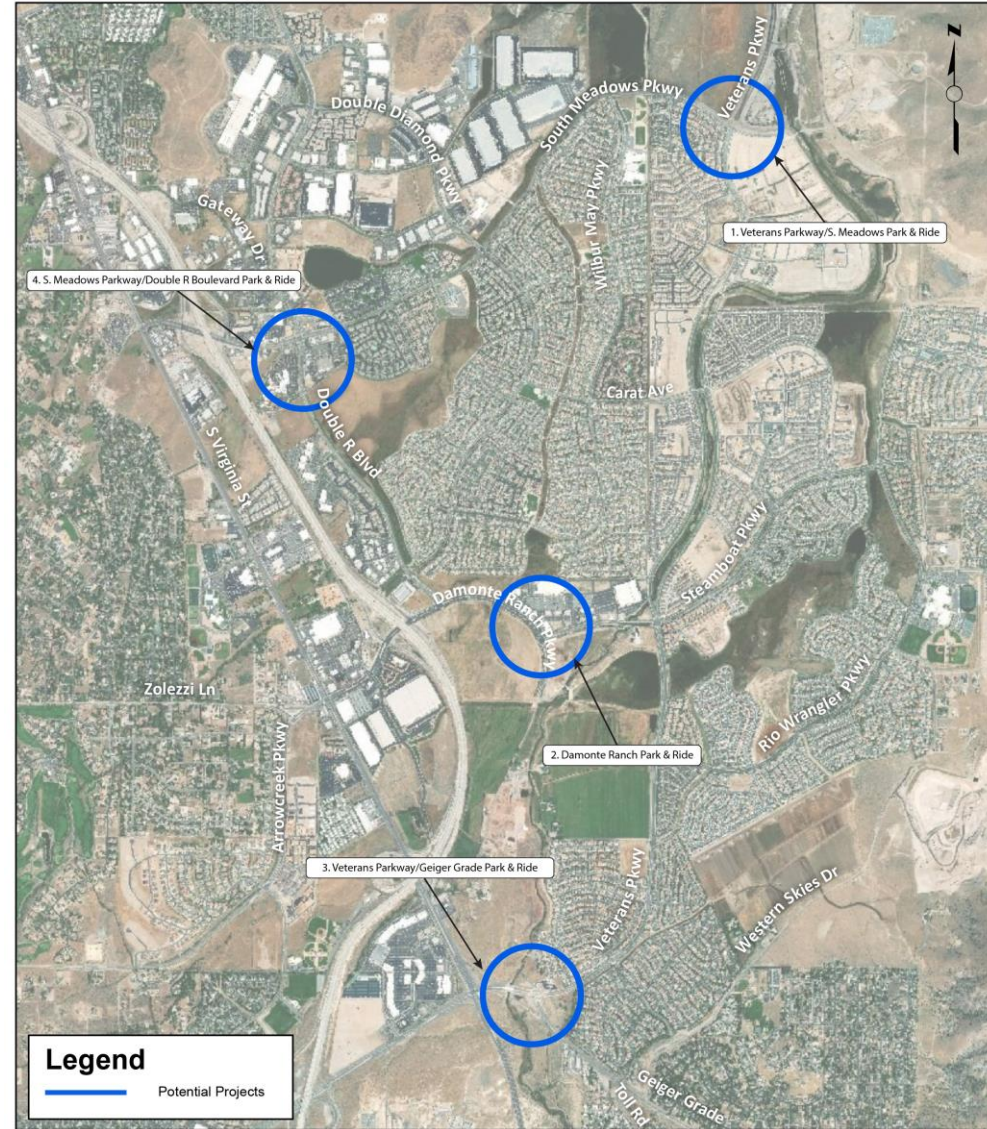
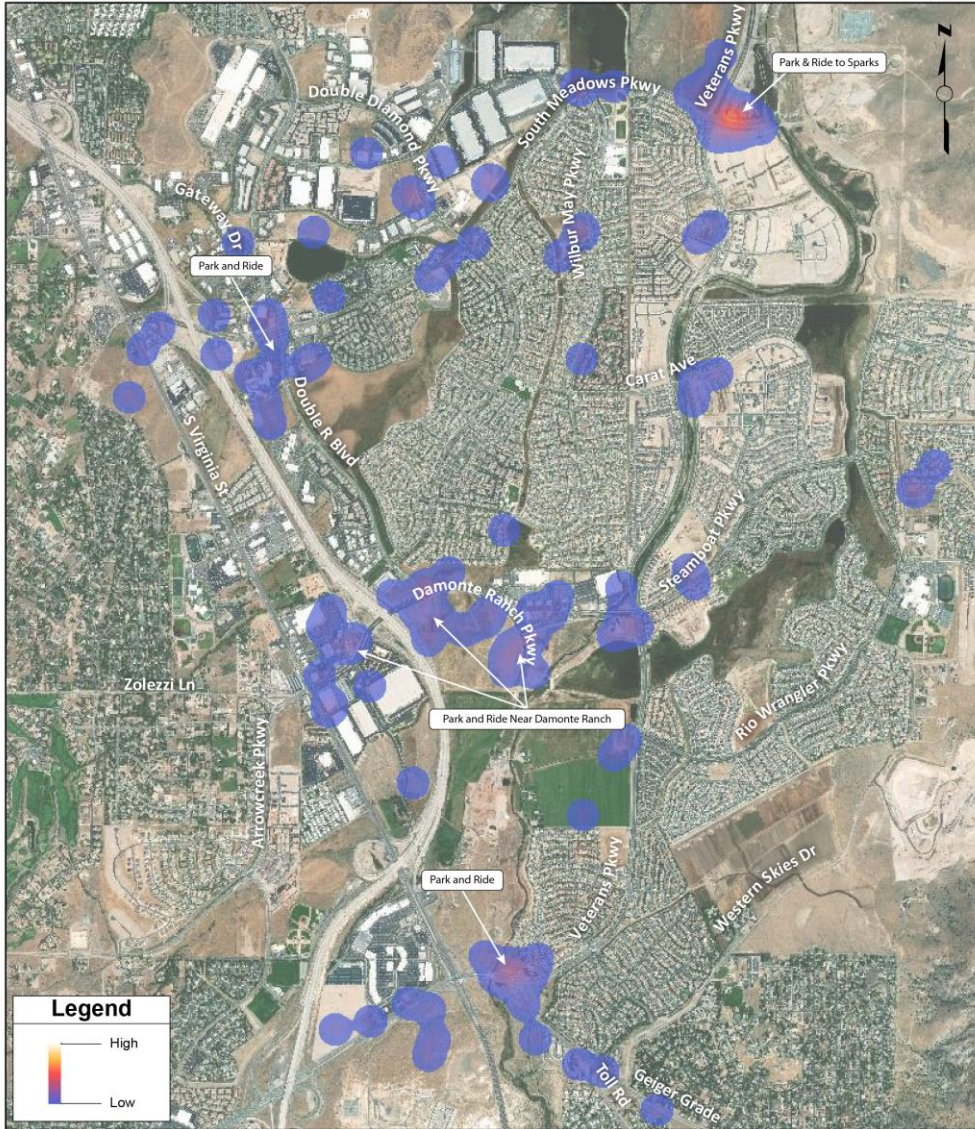
PUBLIC COMMENTS/CONCERNS - PEDESTRIAN



POTENTIAL PEDESTRIAN PROJECTS



TRANSIT/PARK&RIDE COMMENTS & POTENTIAL PROJECTS



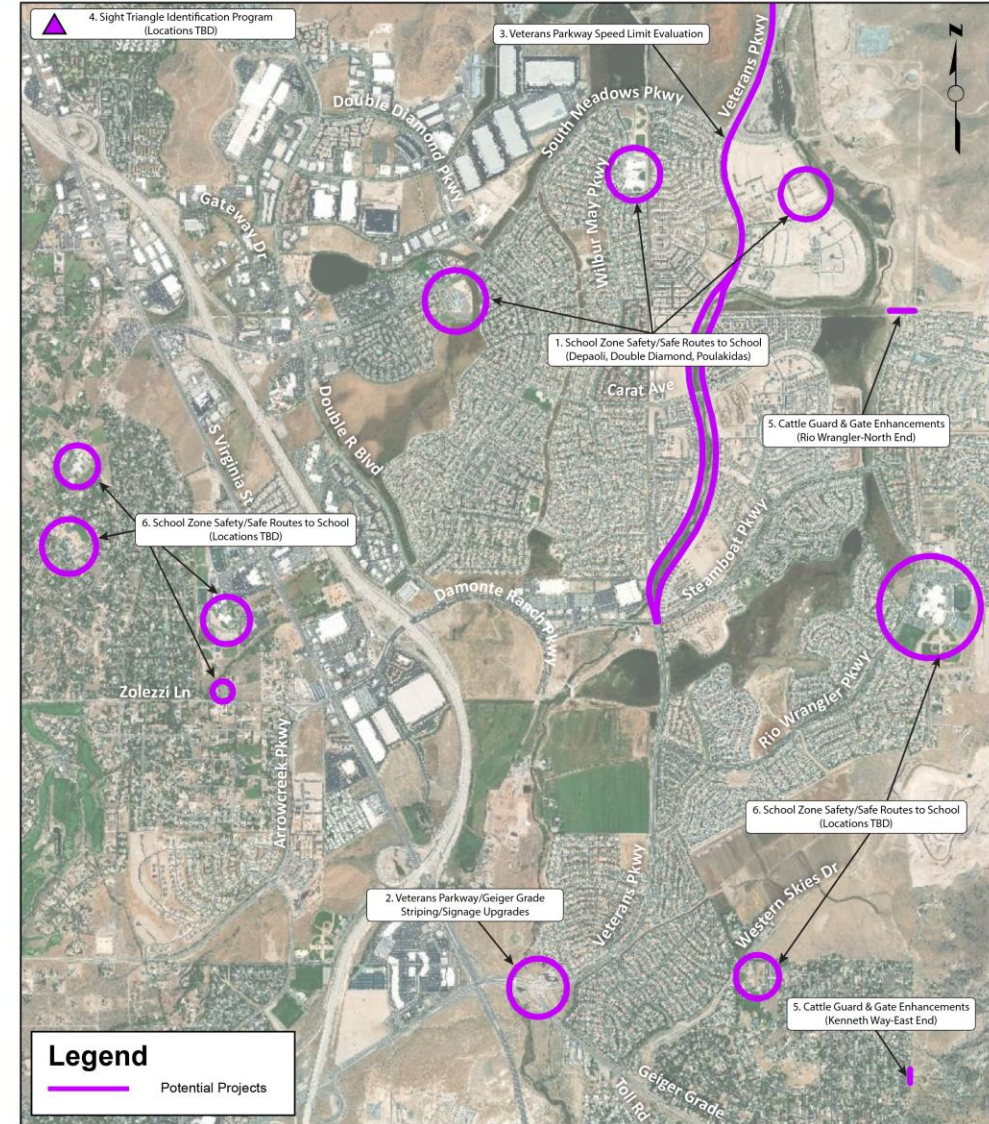
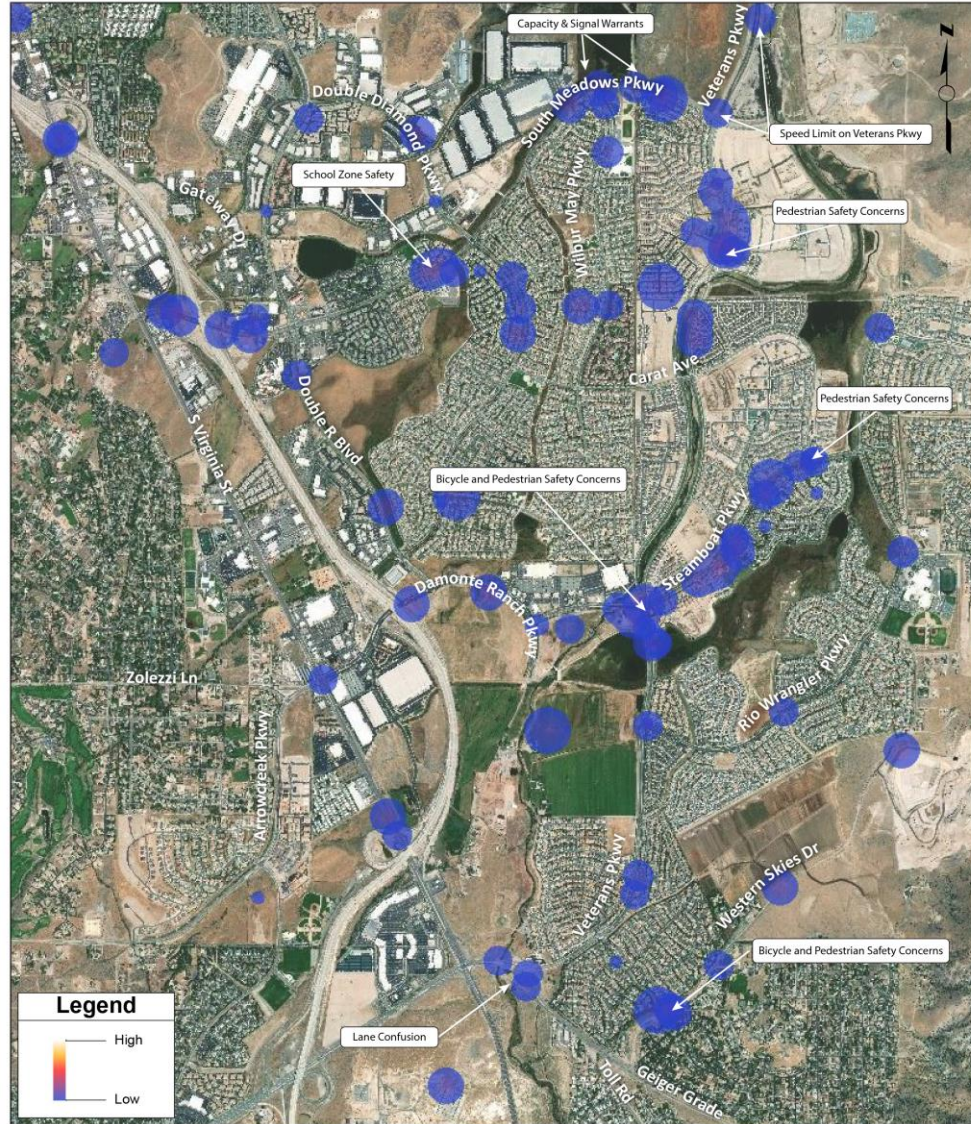
PUBLIC COMMENTS/CONCERNS - PARK AND RIDE



POTENTIAL PARK & RIDE PROJECTS



SAFETY COMMENTS & POTENTIAL PROJECTS



PUBLIC COMMENTS/CONCERNS - SAFETY



POTENTIAL SAFETY PROJECTS



DRAFT POTENTIAL PROJECTS LIST

South Meadows Preliminary Bicycle Improvements

ID	Improvement
<i>Package 1 (Near Term)</i>	
1	S. Meadows Parkway Bicycle Facility Improvements: Double Diamond Parkway to Veterans Parkway
2	Double Diamond Boulevard Bicycle Facility Enhancements: Double R Boulevard to S. Meadows Parkway
3	Veterans Parkway/Steamboat Parkway Bicycle Facility Upgrades
<i>Package 2 (Mid Term)</i>	
4	Veterans Parkway Bicycle Facility Upgrades: S. Meadows Pkwy to Steamboat Parkway
5	Double R Boulevard Bicycle Facility Enhancements: S. Meadows Parkway to Damonte Ranch Parkway
6	Geiger Grade Bicycle Facility Improvements: S. Virginia Street to Rim Rock Drive
7	Western Skies Drive Bicycle Facility Improvements: Geiger Grade to Rio Wrangler Parkway
<i>Package 3 (Long Term)</i>	
8	Spot Location Bicycle Improvements

	S. Meadows Parkway Bicycle Facility Improvements: N. Virginia Street to Double Diamond
--	--

South Meadows Preliminary Pedestrian Improvements

ID	Improvement
<i>Package 1 (Near Term)</i>	
1	Veterans Parkway Pedestrian Improvements: S. Meadows Parkway to Carat Avenue
2	S. Meadows Parkway Pedestrian Enhancements: Evergreen Street to Double Diamond Walking Path
3	Steamboat Parkway Pedestrian Improvements: Veterans Parkway to Rio Wrangler Parkway
<i>Package 2 (Mid Term)</i>	
4	Rio Wrangler Parkway Pedestrian Improvements: Steamboat Parkway to Veterans Parkway
5	Double R Boulevard Pedestrian Enhancements: S. Meadows Parkway to Lauren Court
6	Open/Maintain Under-Crossing at Veterans Wetland Loop
<i>Package 3 (Long Term)</i>	
7	Spot Location Pedestrian Improvements

	Arrowcreek/Zolezzi/Mountain View School Area Bike/Pedestrian Facility Upgrades
--	--

DRAFT POTENTIAL PROJECTS LIST

South Meadows Preliminary Safety Improvements

ID	Improvement
<i>Package 1 (Near Term)</i>	
1	School Zone Safety/Safe Routes to School (Depaoli, Double Diamond, Poulakidas)
2	Veterans Parkway/Geiger Grade Signage Upgrades
3	Veterans Parkway Speed Limit Evaluation
4	Sight Triangle Identification Program
5	Cattle Guard & Gate Enhancements: Rio Wrangler (North End), Kenneth Way (East End)
<i>Package 2 (Mid Term)</i>	
6	School Zone Safety/Safe Routes to School (Areas Surrounding Schools)
7	Spot Location Safety Improvements
<i>Package 3 (Long Term)</i>	
8	Spot Location Safety Improvements

South Meadows Preliminary Park & Ride Improvements

ID	Improvement
<i>Package 1 (Near Term)</i>	
1	Veterans Parkway/S. Meadows Park & Ride
2	Damonte Ranch Park & Ride
<i>Package 2 (Mid Term)</i>	
3	Veterans Parkway/Geiger Grade Park & Ride
4	S. Meadows Parkway/Double R Boulevard Park & Ride

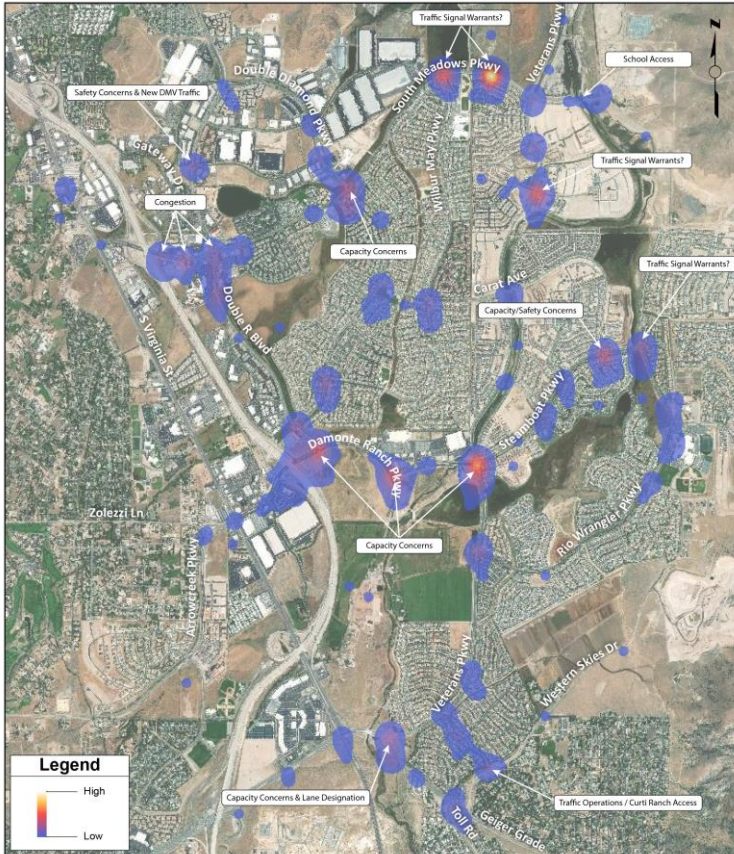
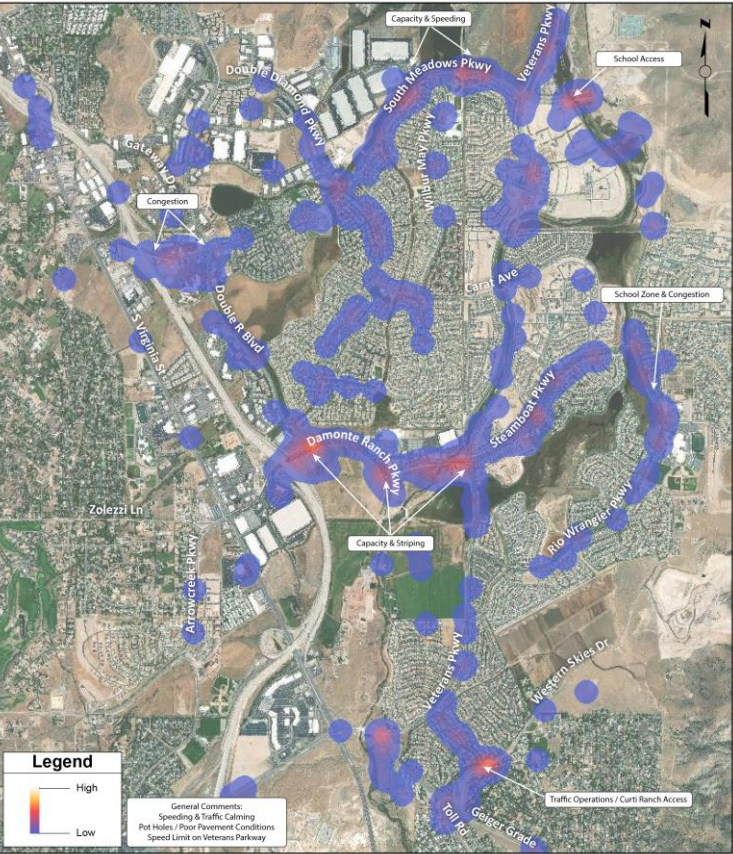
NEXT STEPS

Special Model Runs with Future Land Use (June)

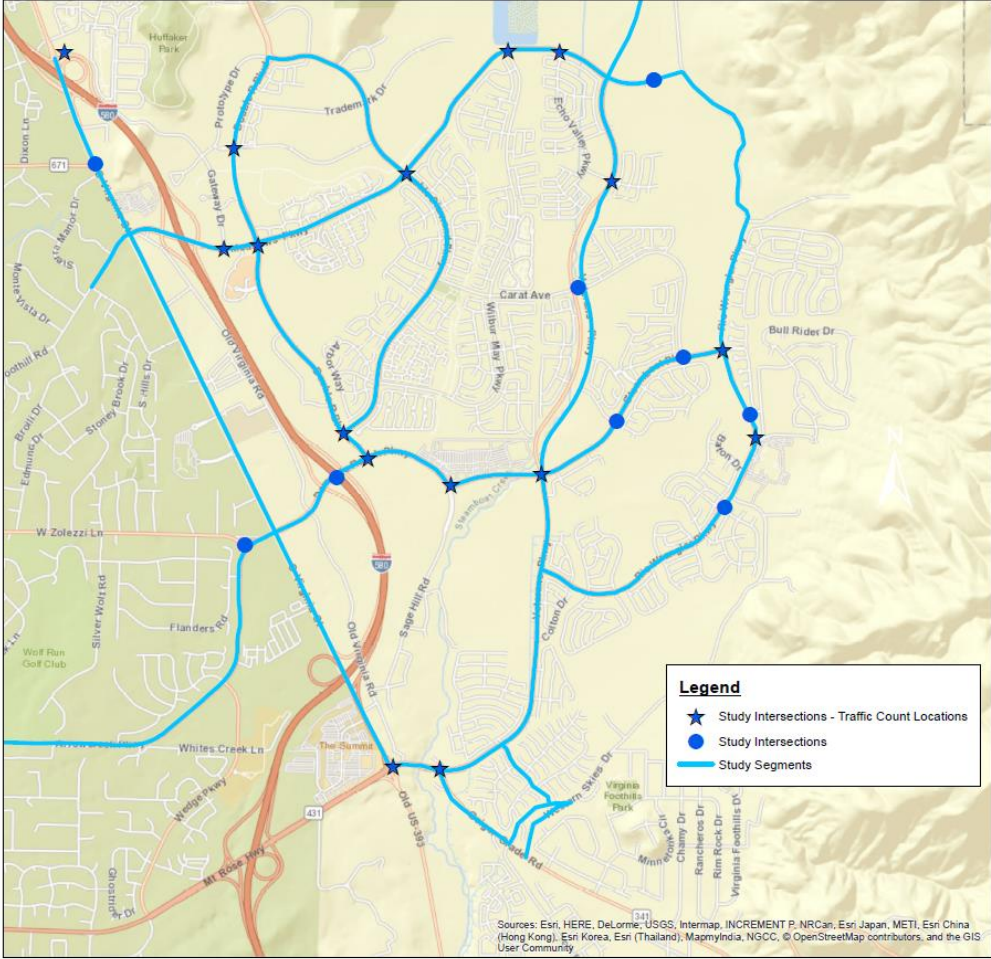
Intersection & Road Segment Analysis (July)

Bring list of Intersection & Roadway Projects for TAC review (July-August)

STUDY INTERSECTIONS & ROADWAY SEGMENTS



Study Intersections and Road Segments



THANK YOU FOR PARTICIPATING !

