



REGIONAL TRANSPORTATION COMMISSION

Metropolitan Planning • Public Transportation & Operations • Engineering & Construction

Metropolitan Planning Organization of Washoe County, Nevada

South Meadows Multimodal Transportation Study

November 5, 2019



Your RTC. Our Community.

Welcome & Purpose of Meeting

Welcome & Introductions

Purpose of Meeting is to Review:

- Public comments received to date
- Traffic analysis
- Transportation Alternatives for Consideration

We Want to Hear from You!

Vision and Goals

VISION STATEMENT:

Create a safe and efficient multimodal transportation system in the South Meadows to support quality of life.

GOALS:

- Improve roadway safety for all users
- Plan regional roadway and intersection capacity improvements
- Expand pedestrian and bicycle connectivity
- Enhance public transportation connectivity and travel options

RTC Bus Stop ADA Improvement Program



Signal Timing Updates

Purpose:

Optimizing efficiency of traffic signals will improve operations in the near term

Regional Traffic Signal Coordination:

Traffic signals are typically retimed on a 3-5 year basis. In the Truckee Meadows, our traffic signals are retimed on a three year cycle. RTC, NDOT, Reno, Sparks, and Washoe County collaborate on signal optimization.

Talk to our Traffic Engineer!

Programming Process

Public Engagement

- Public Outreach
- Agency Working Groups
- RTC Advisory Committees
- Online Forums/Surveys
- Traditional and Social Media
- RTC Board public hearing

Corridor/Area
Studies

Regional
Transportation
Plan (RTP)

5-year Regional
Transportation
Improvement
Program (RTIP)

2-year Program
of Projects (POP)

Technical Analysis

- Corridor/Area Studies
- Consensus Forecast
- Travel Demand Model
- Air Quality Conformity Analysis
- Performance Measures
- GIS/spatial analysis

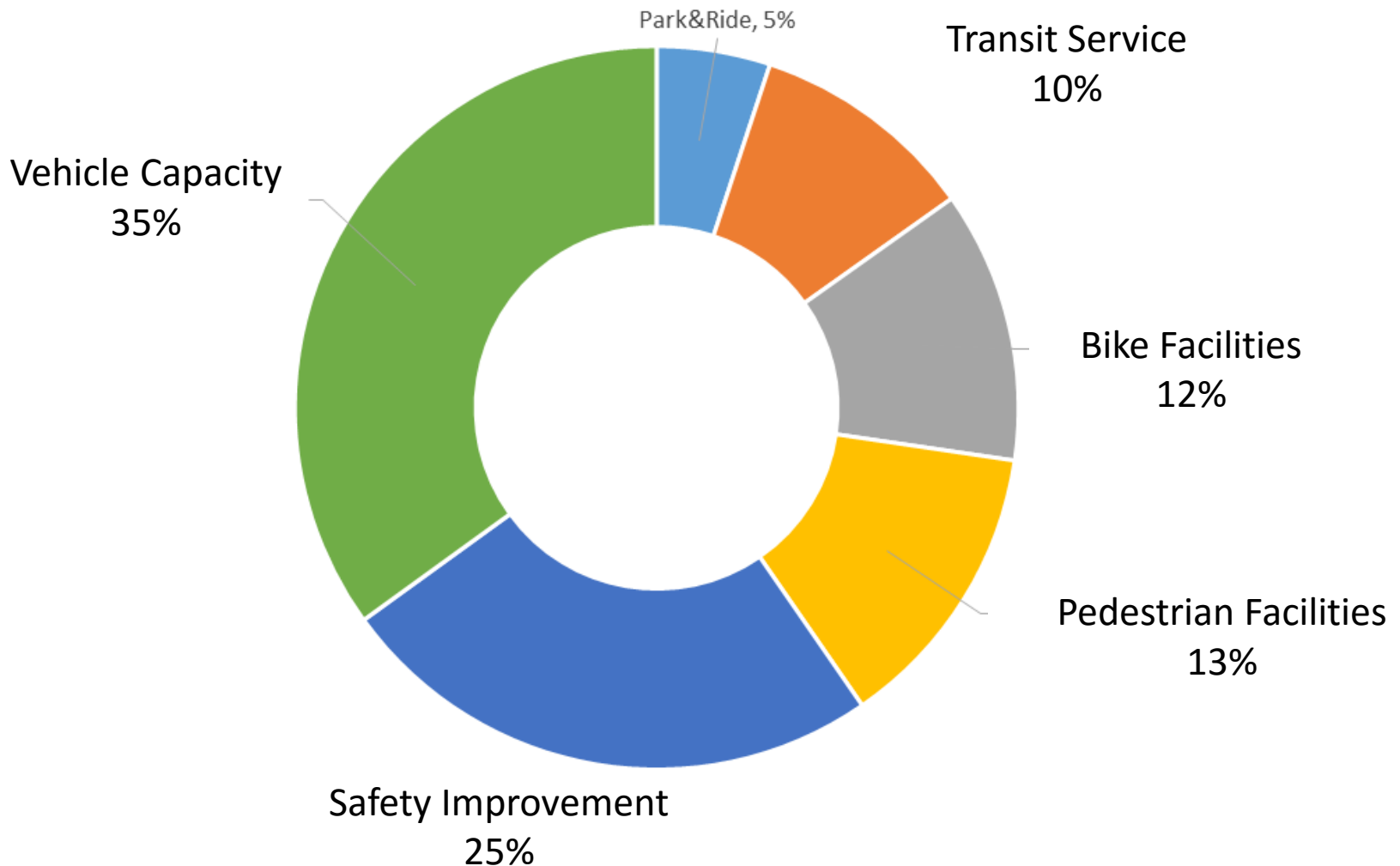
Overview of Survey Results



- 1,069 participants
- 2,926 comments received

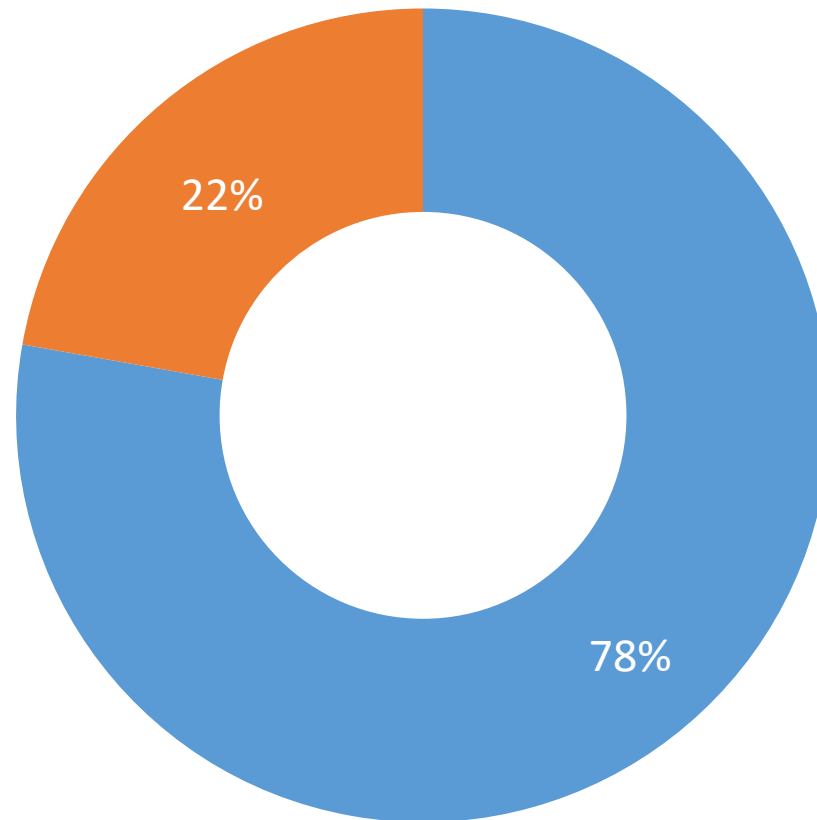
METROQUEST SURVEY SUMMARY

How would you allocate money spent on improvements?



METROQUEST SURVEY SUMMARY

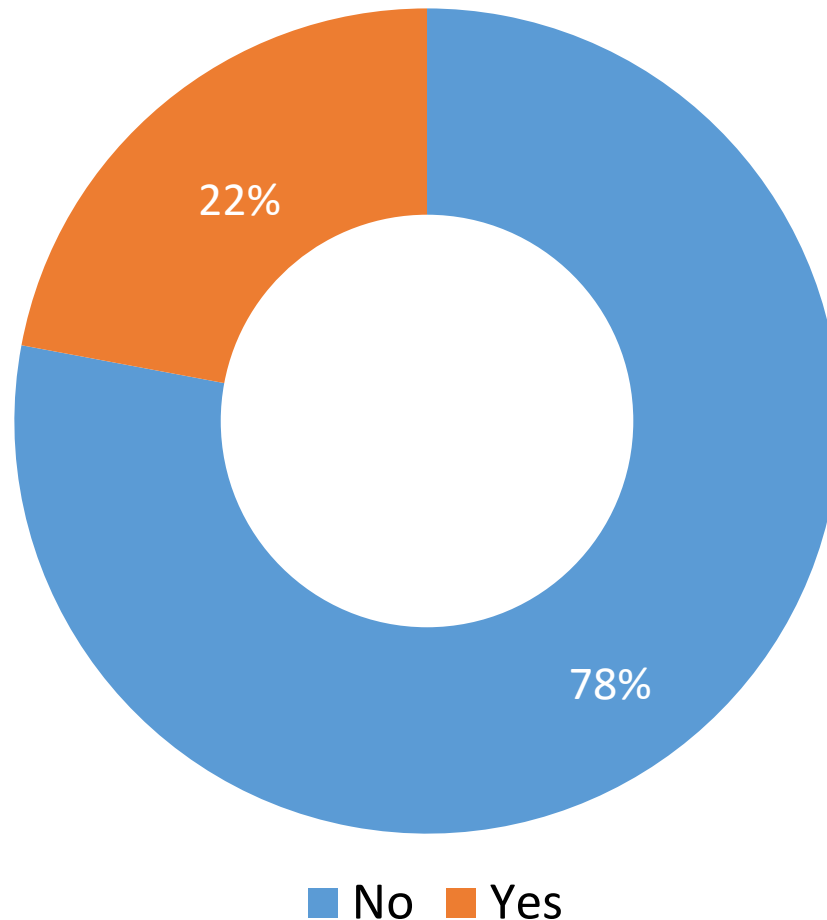
If more **RTC bus routes** were offered in the South Meadows, would you use them?



■ No ■ Yes

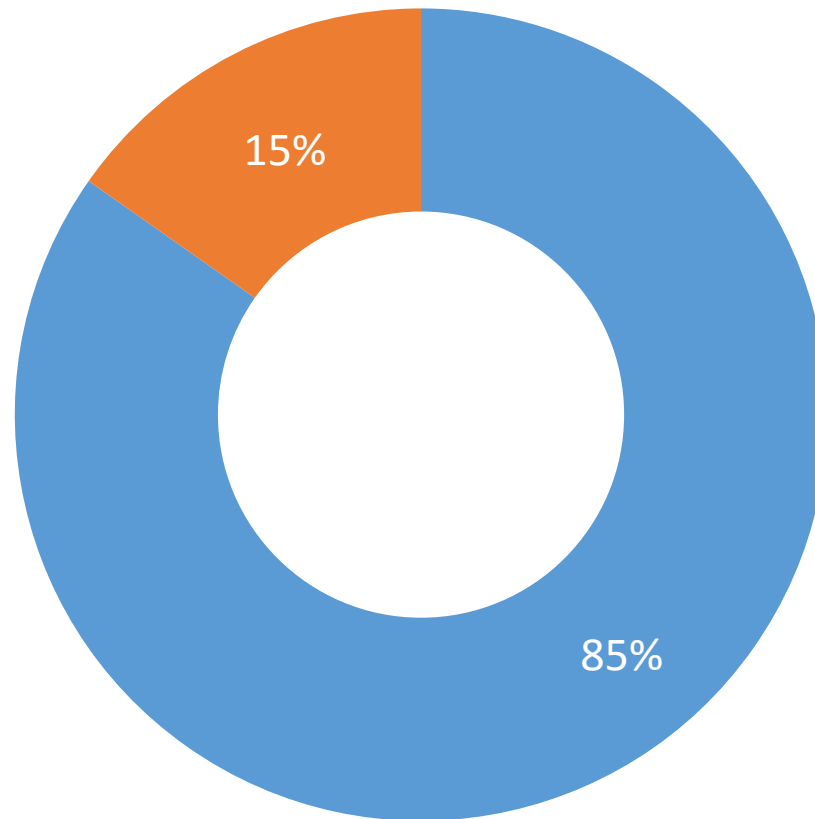
METROQUEST SURVEY SUMMARY

If **Park & Ride lots** were created in the South Meadows, would you use them?



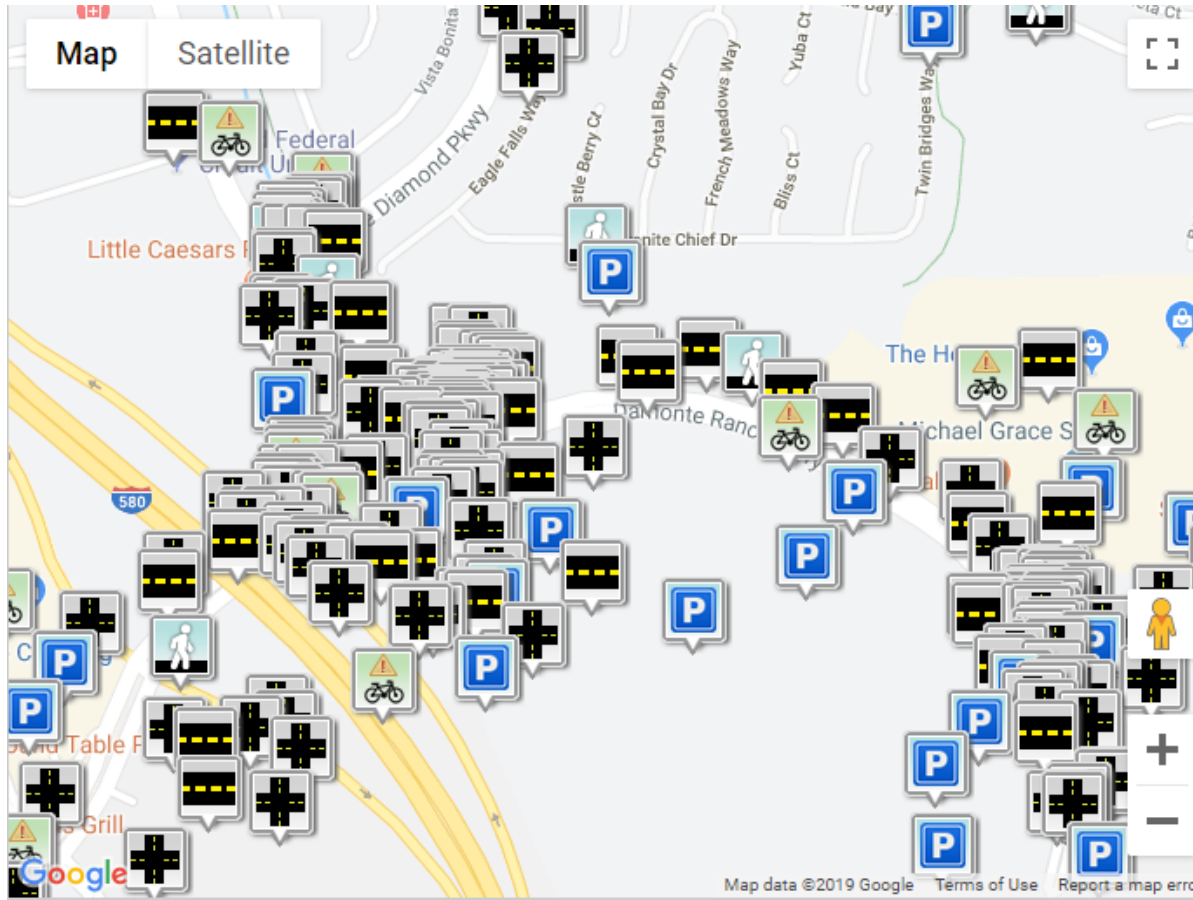
METROQUEST SURVEY SUMMARY

If more **van/car pool services** were available, would you use them?

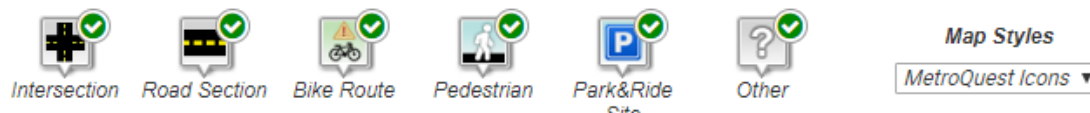


■ No ■ Yes

METROQUEST SURVEY SUMMARY

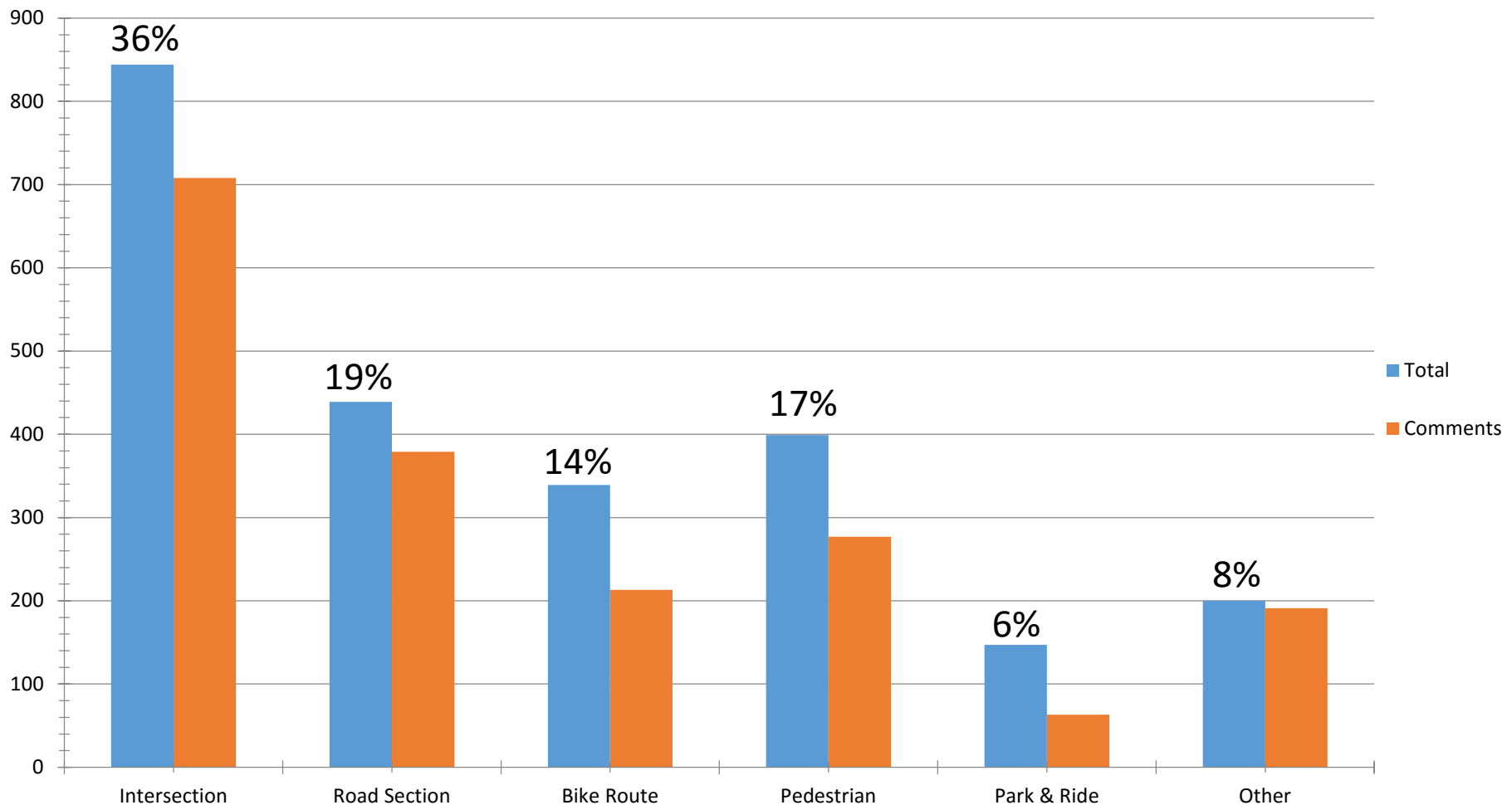


- 2,368 markers
- 1,831 with comments



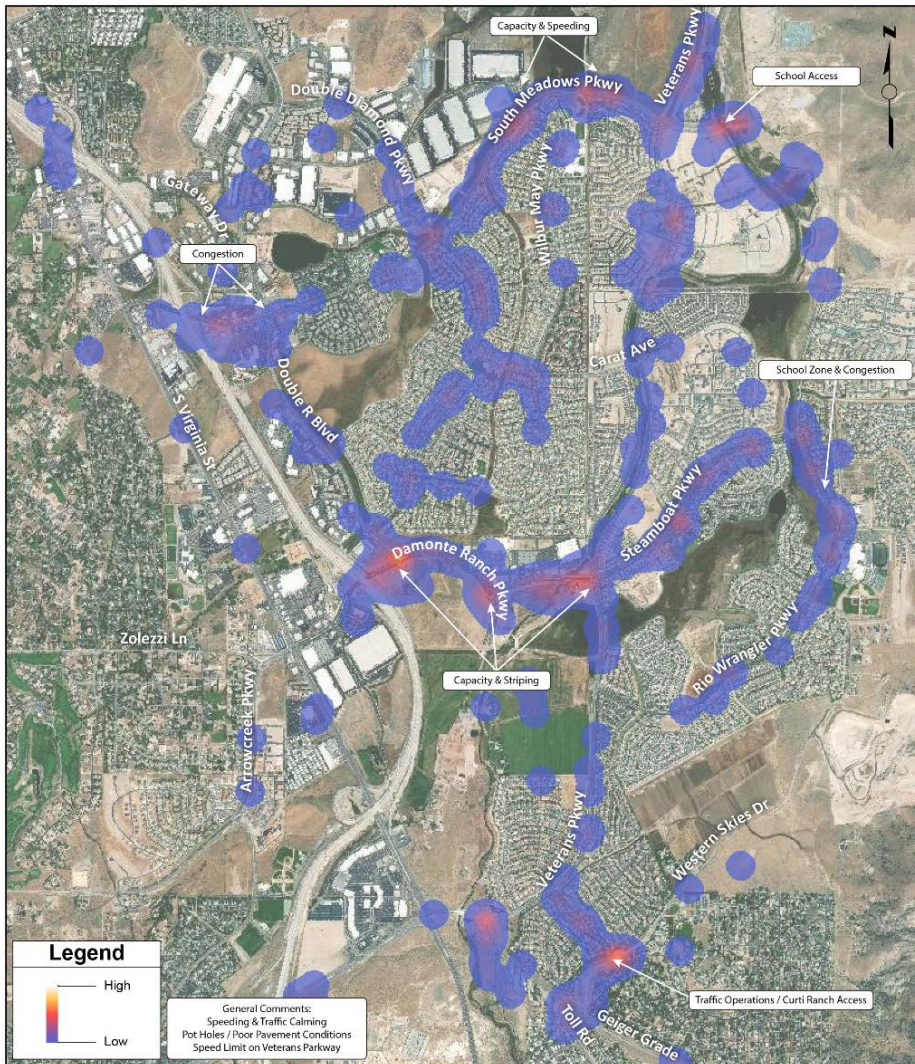
METROQUEST SURVEY SUMMARY

Numbers of comments received in category:

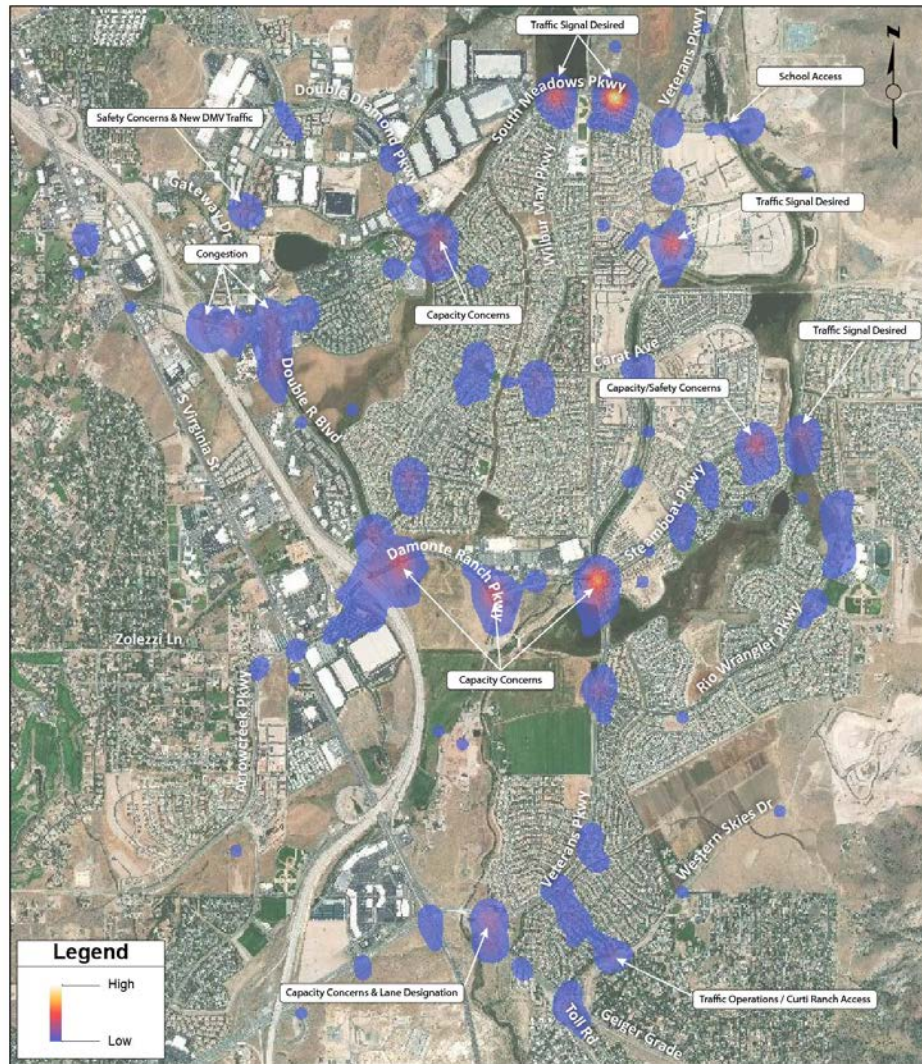


VEHICLE COMMENTS

Road Segment



Intersections



CAPACITY COMMENT EXAMPLES

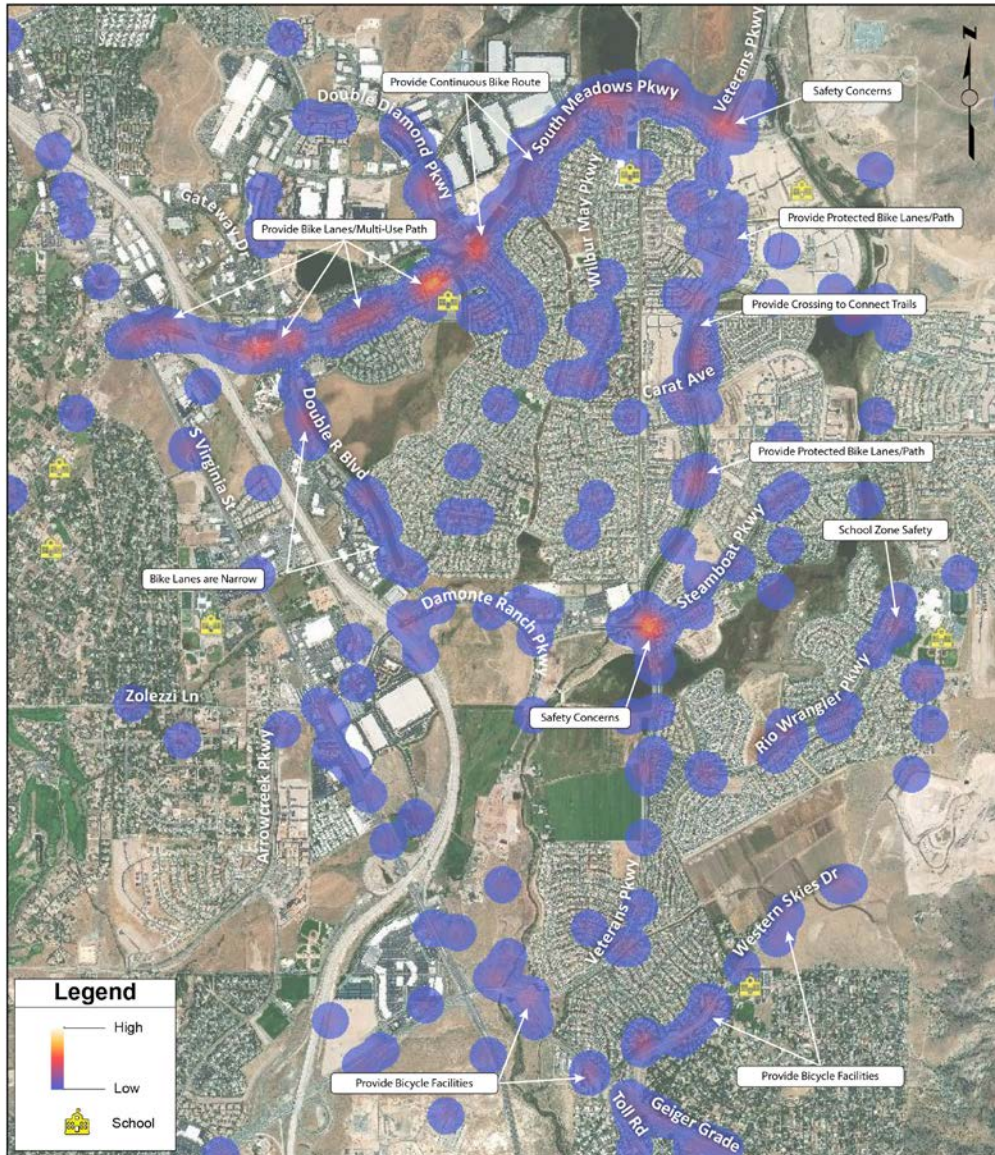


Eastbound Left Turn at S. Meadows & Gateway



Eastbound Through at Veterans & Steamboat

BICYCLE COMMENTS

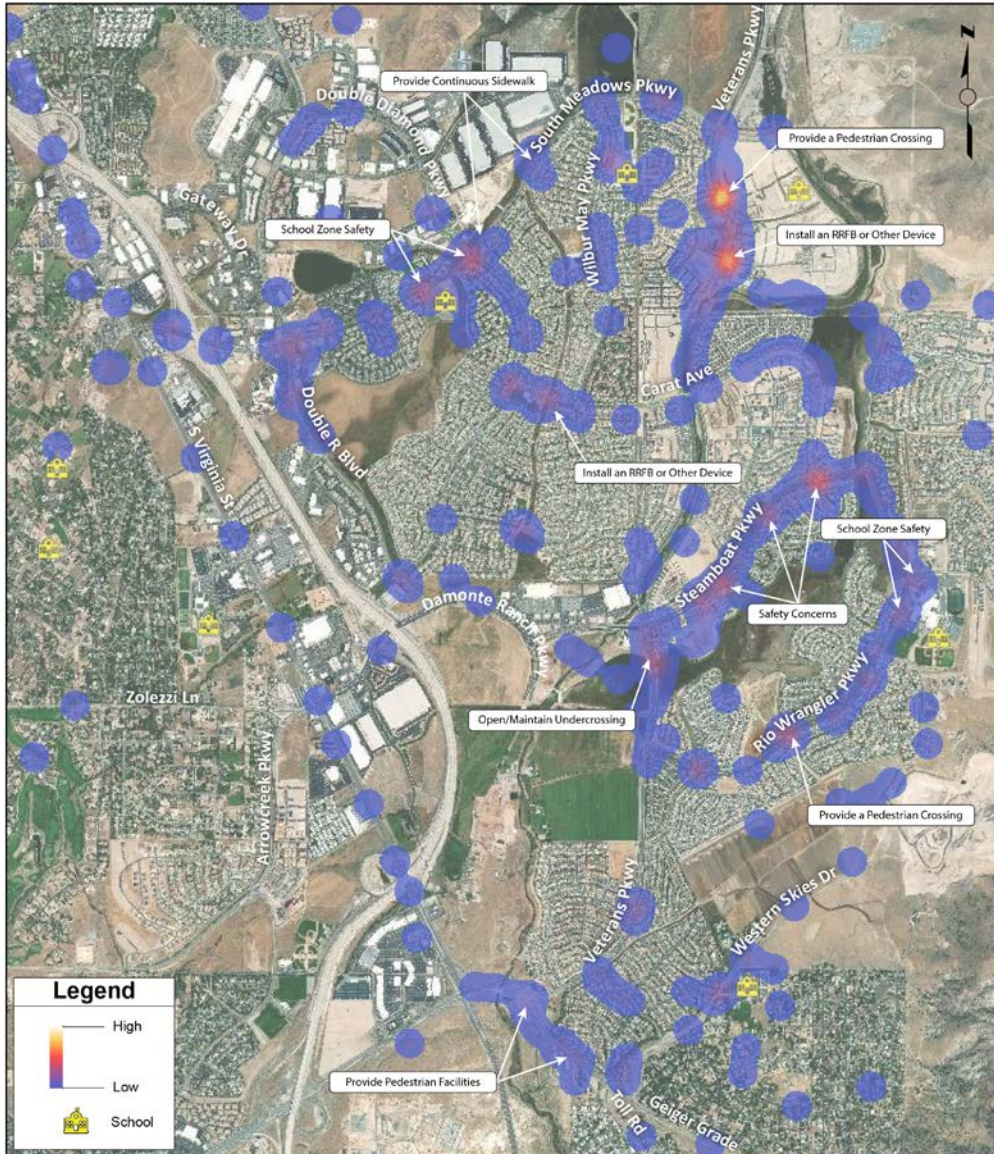


Bicycle Facilities Ending on S. Meadows at Double Diamond



Bicycle Facilities Along Vehicle Lanes with High Speeds

PEDESTRIAN COMMENTS



Pedestrian Crossing and Safety

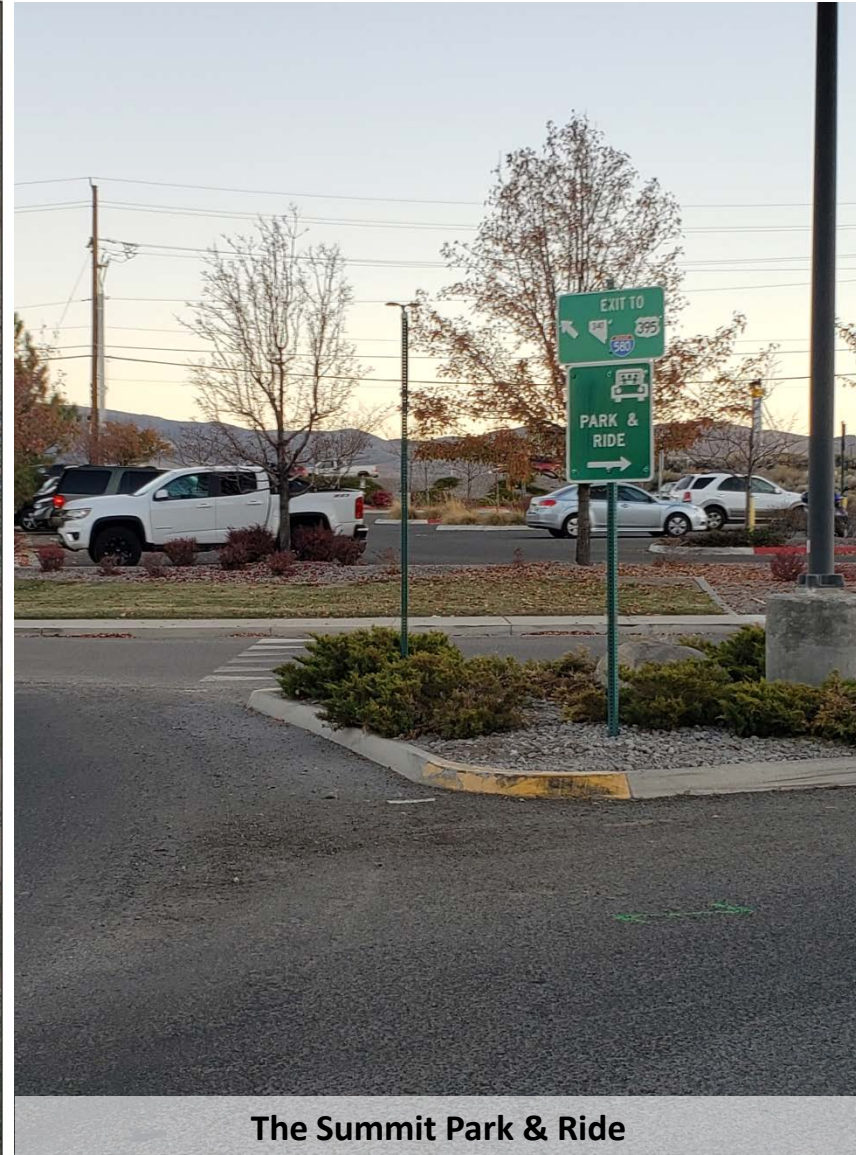
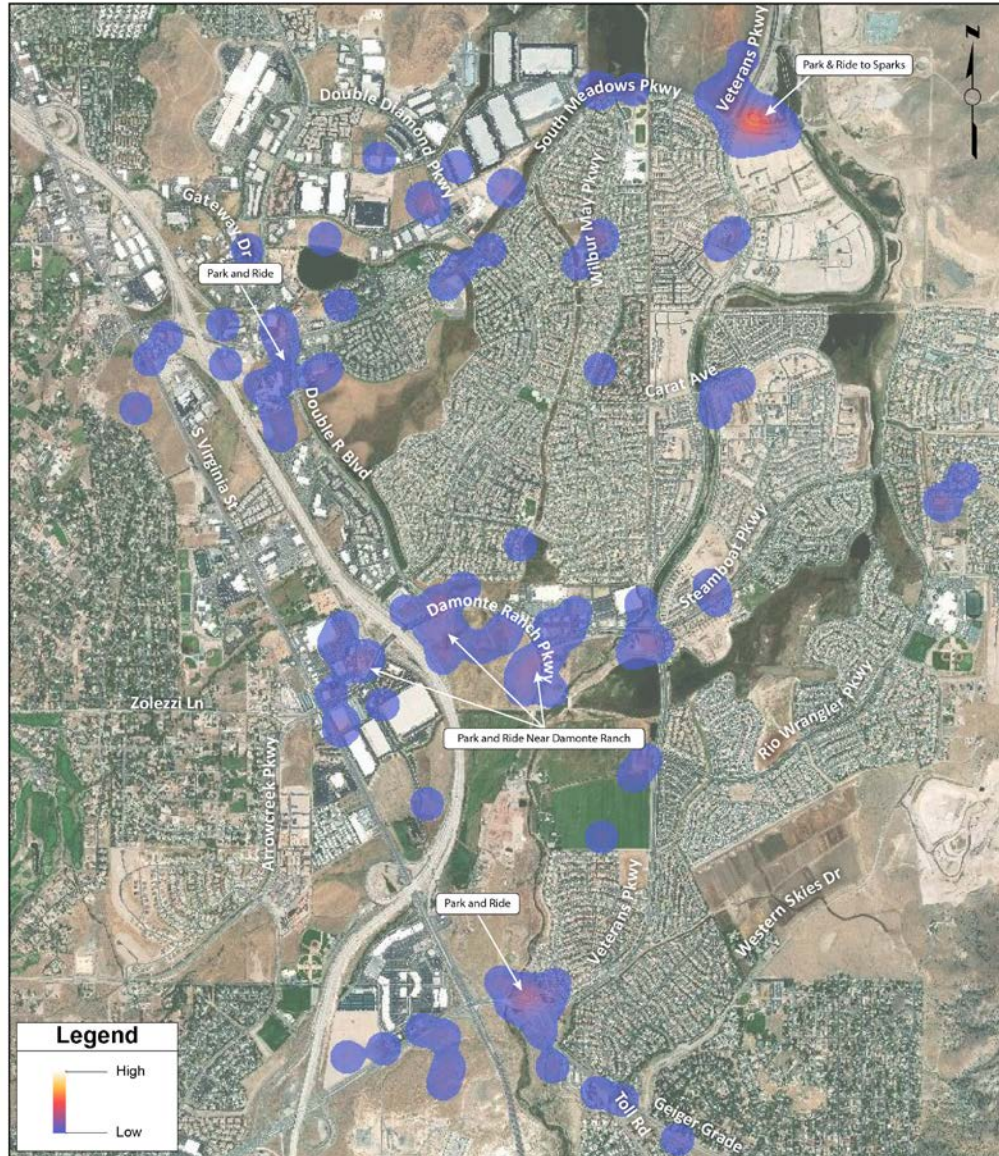


Poor Pedestrian and Bicycle Facilities on Geiger Grade



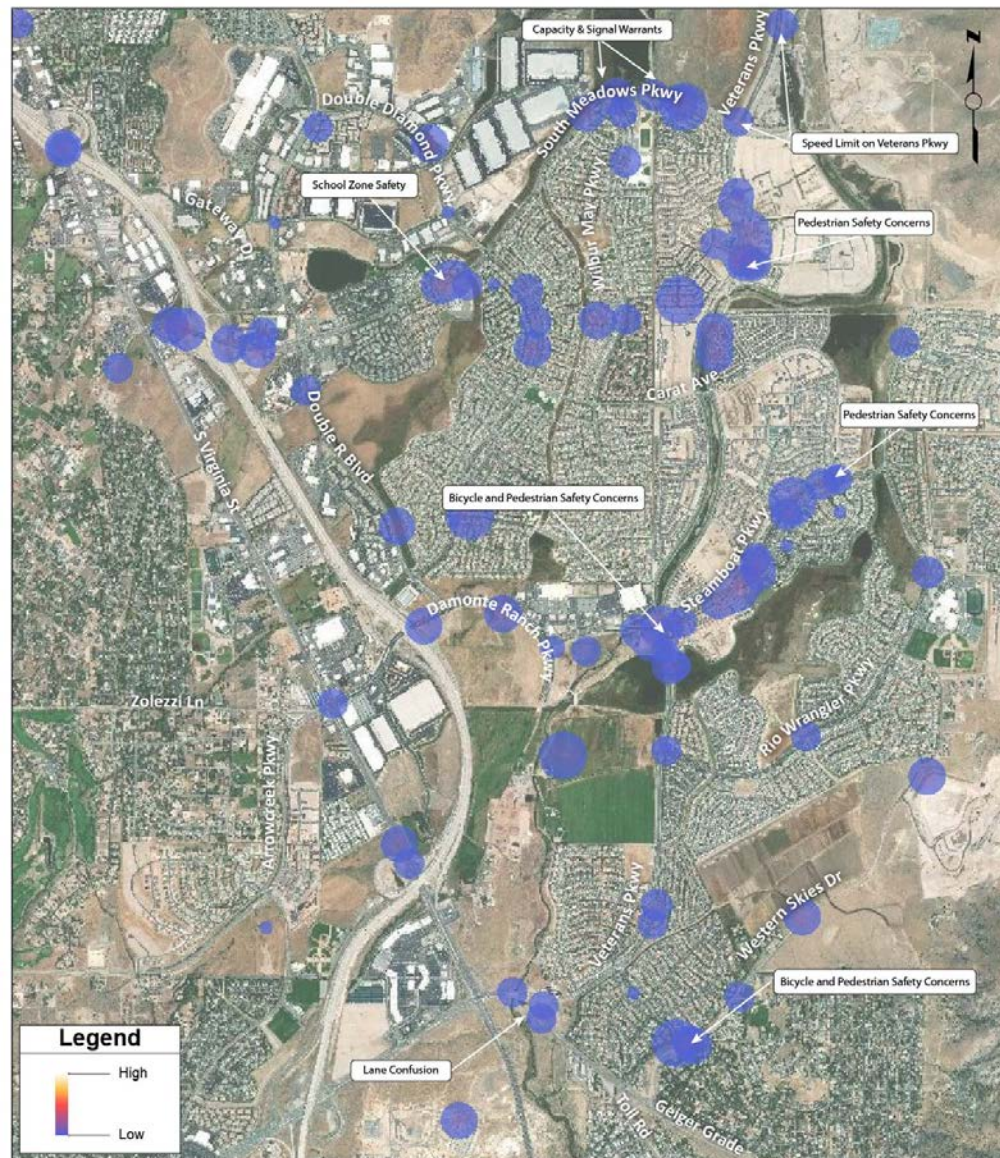
Potential Underpass

TRANSIT/PARK&RIDE COMMENTS



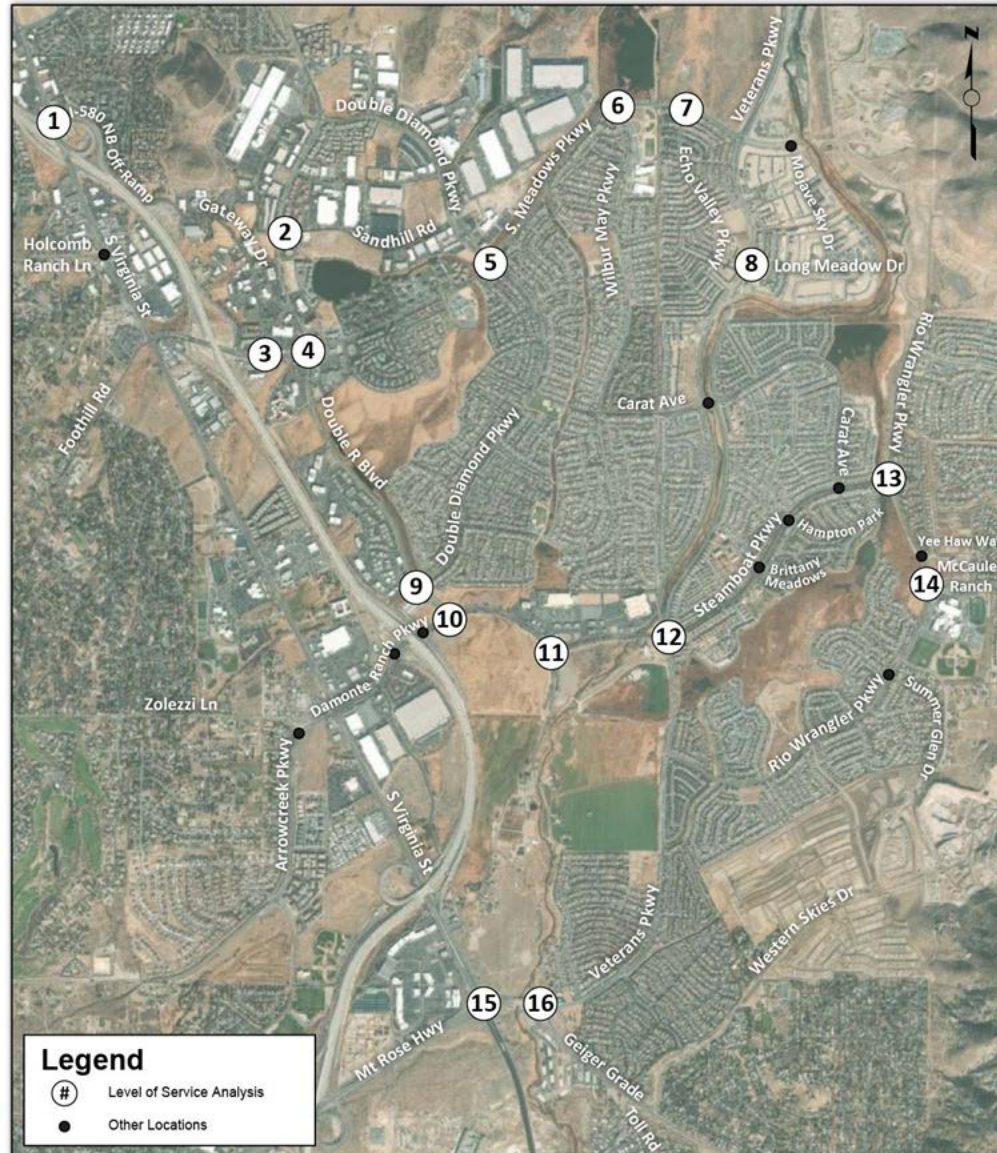
The Summit Park & Ride

SAFETY COMMENTS



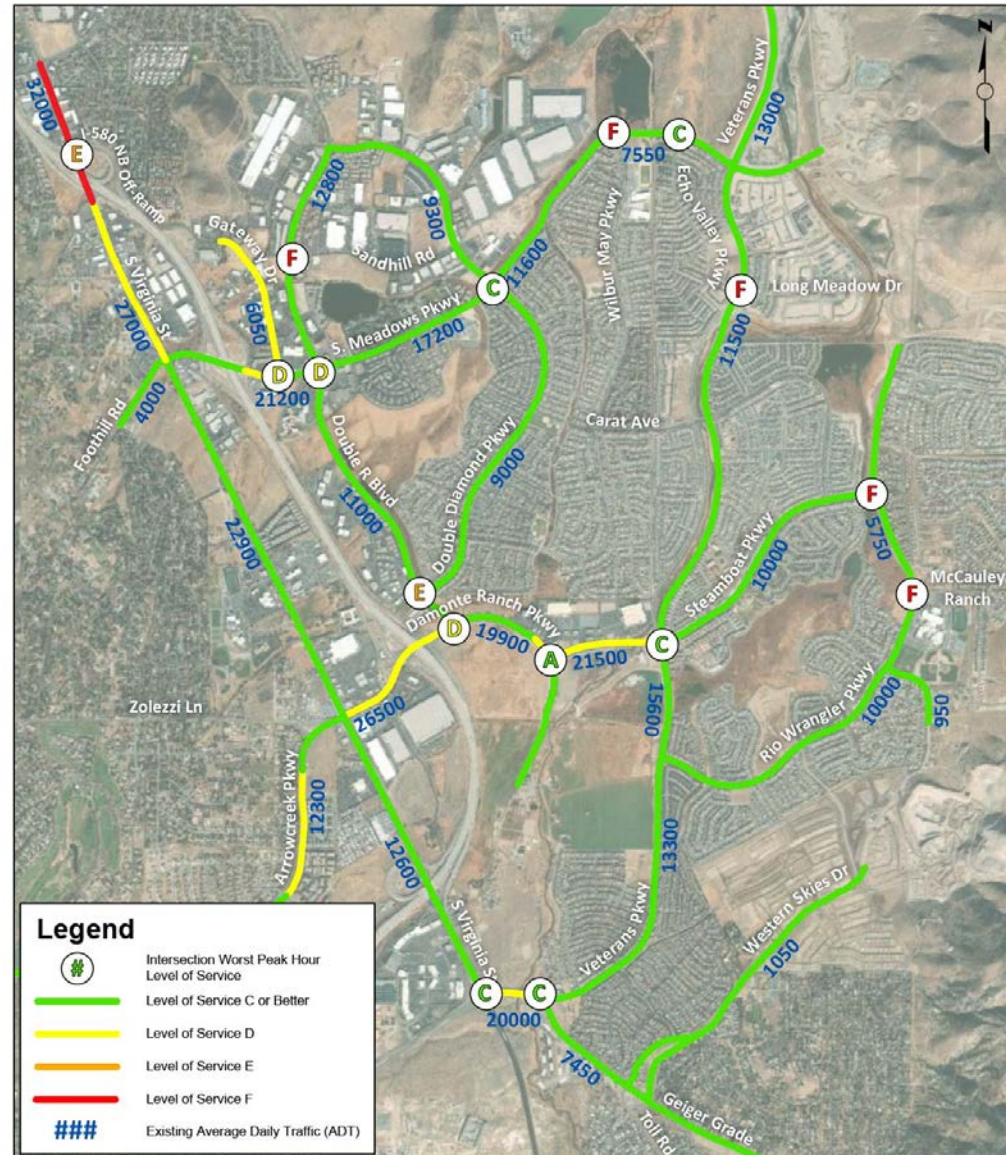
STUDY INTERSECTIONS

- Detailed analysis at 16 intersections
- Review of 11 additional intersections



EXISTING CONDITIONS

- 7 study intersections currently operate at poor levels of service
- 1 roadway segment currently operates at poor level of service
- Delay and queuing at various locations



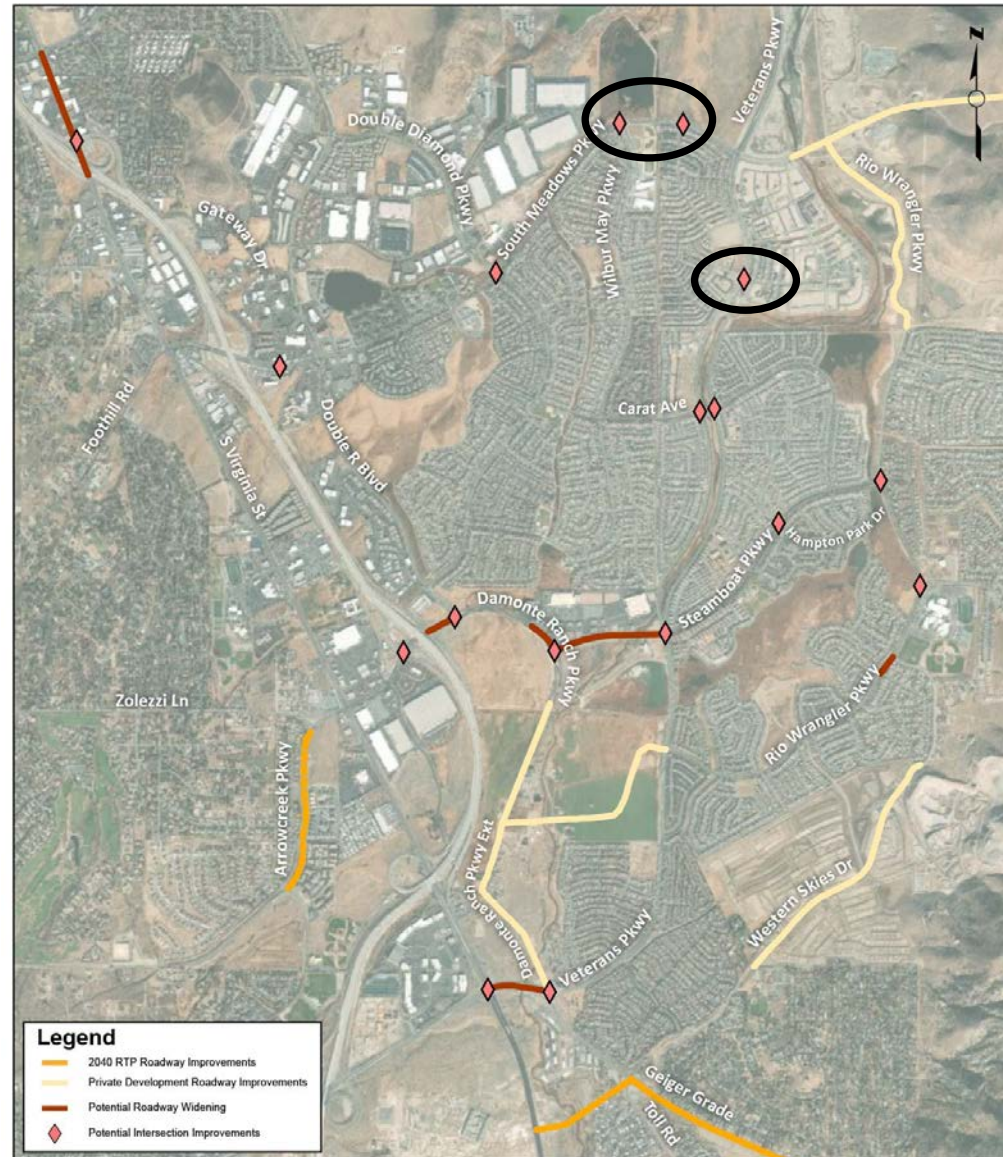
BUILD-OUT ANALYSIS

- 5 more study intersections are anticipated to operate at poor levels of service
- 3 more roadway segments are anticipated to operate at poor levels of service

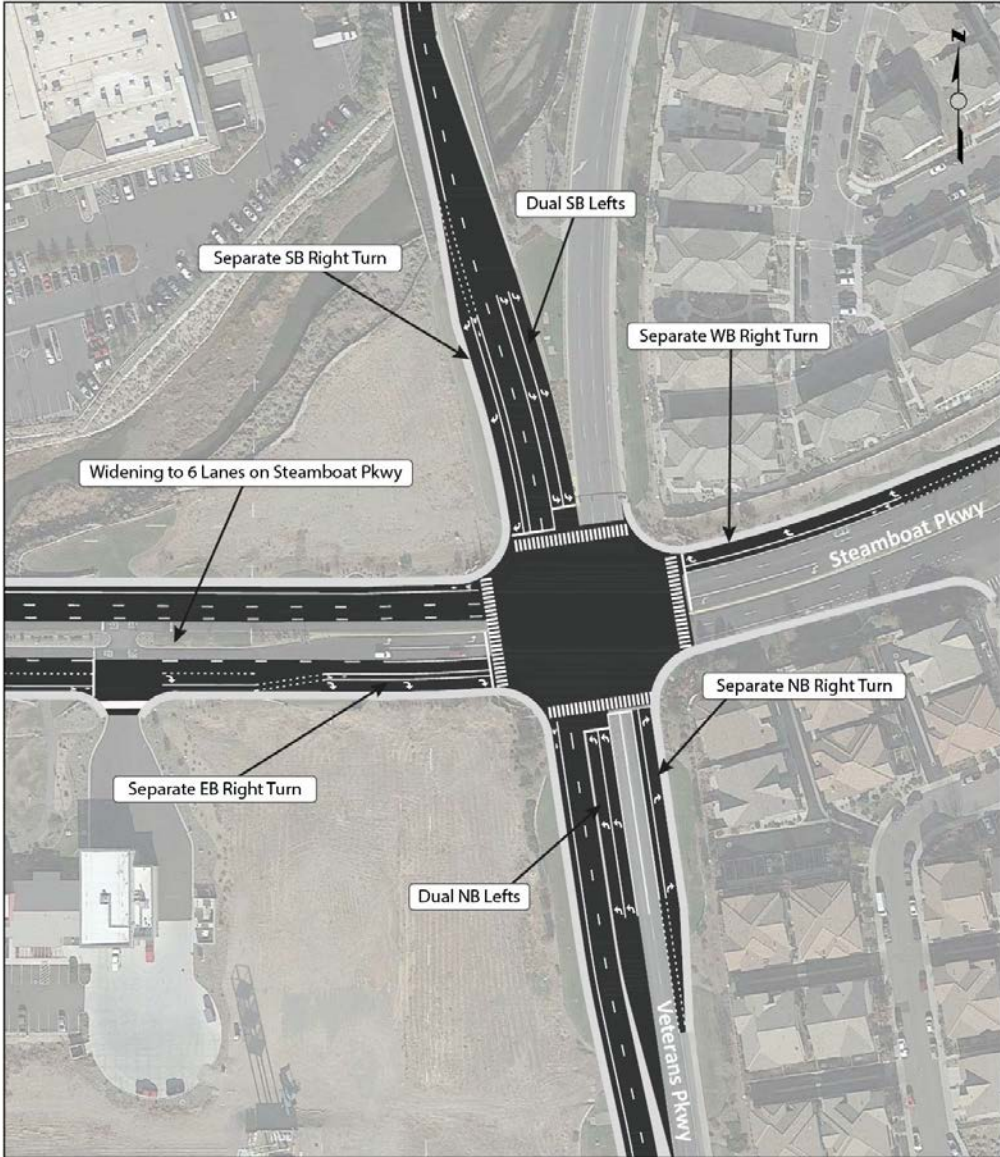


POTENTIAL VEHICLE CAPACITY IMPROVEMENTS

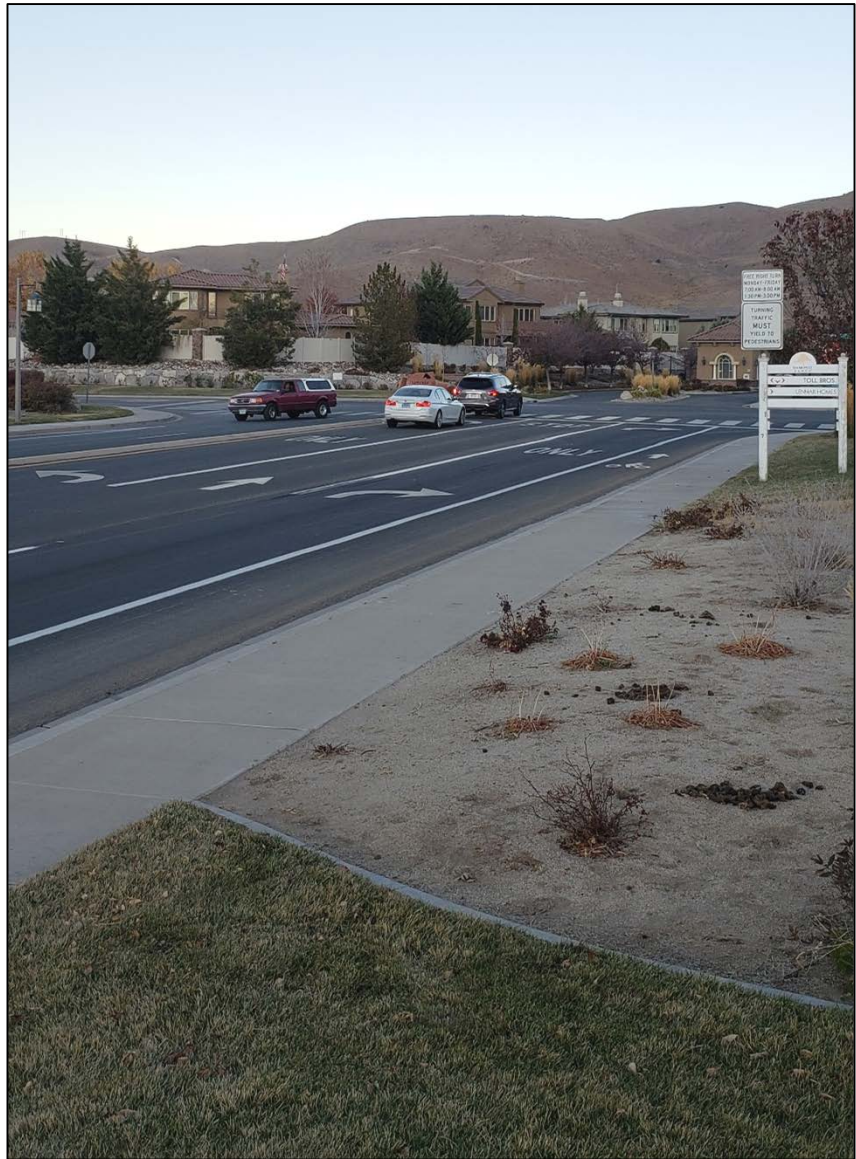
- Approx. 30 potential improvements identified
 - Widen Damonte Ranch/Steamboat to 6 lanes from US 395 to Veterans Pkwy
 - Widen Virginia St to 6 lanes from US 395 to Patriot
 - New traffic signals at
 - Veterans & Long Meadow Dr
 - South Meadows at Wilbur May & Echo



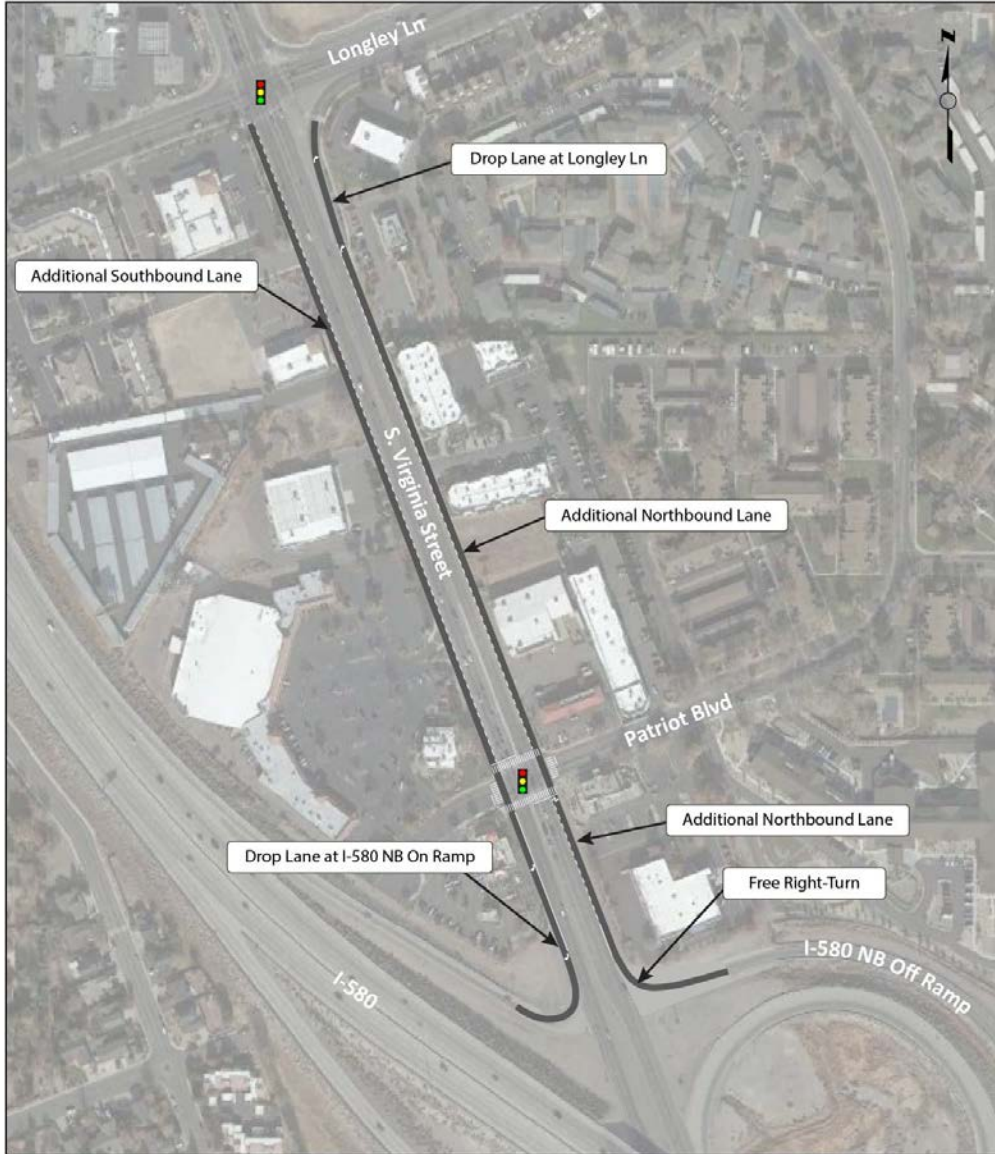
STEAMBOAT/VETERANS CONCEPT



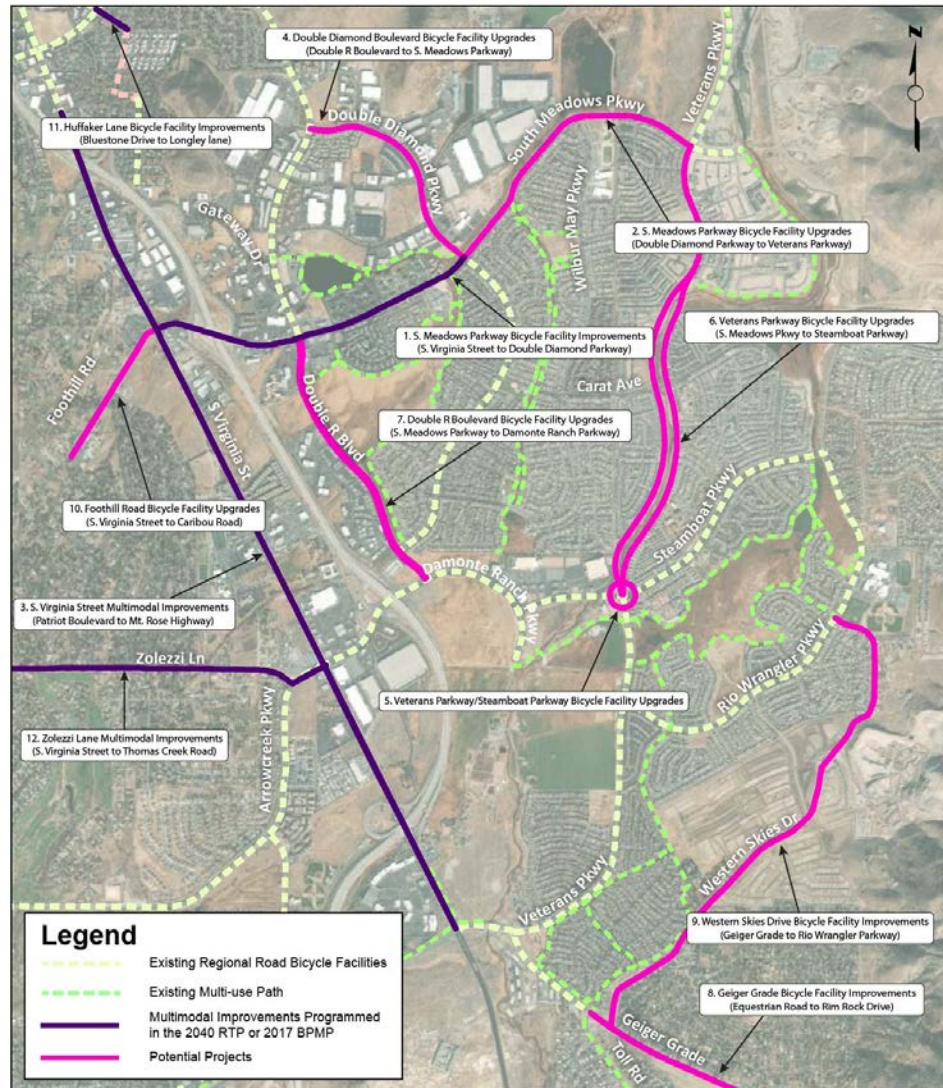
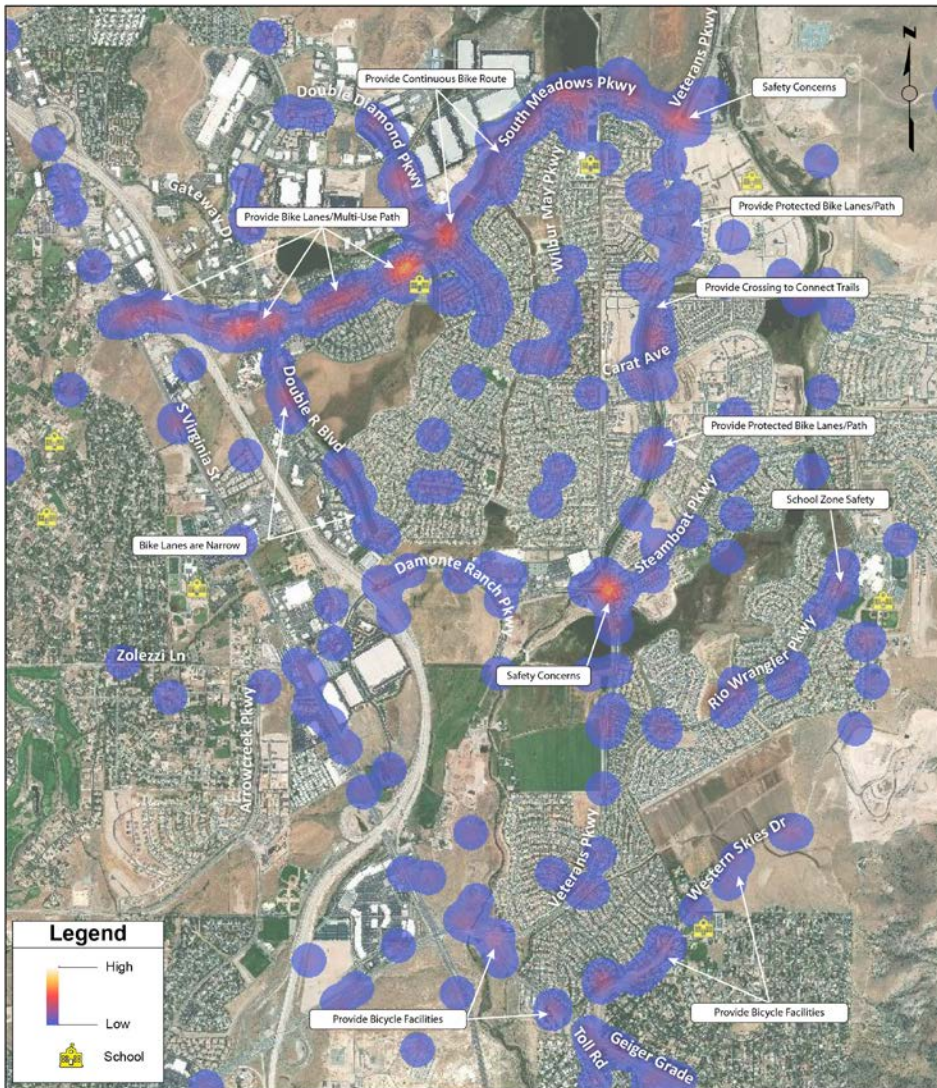
STEAMBOAT/RIO WRANGLER CONCEPT



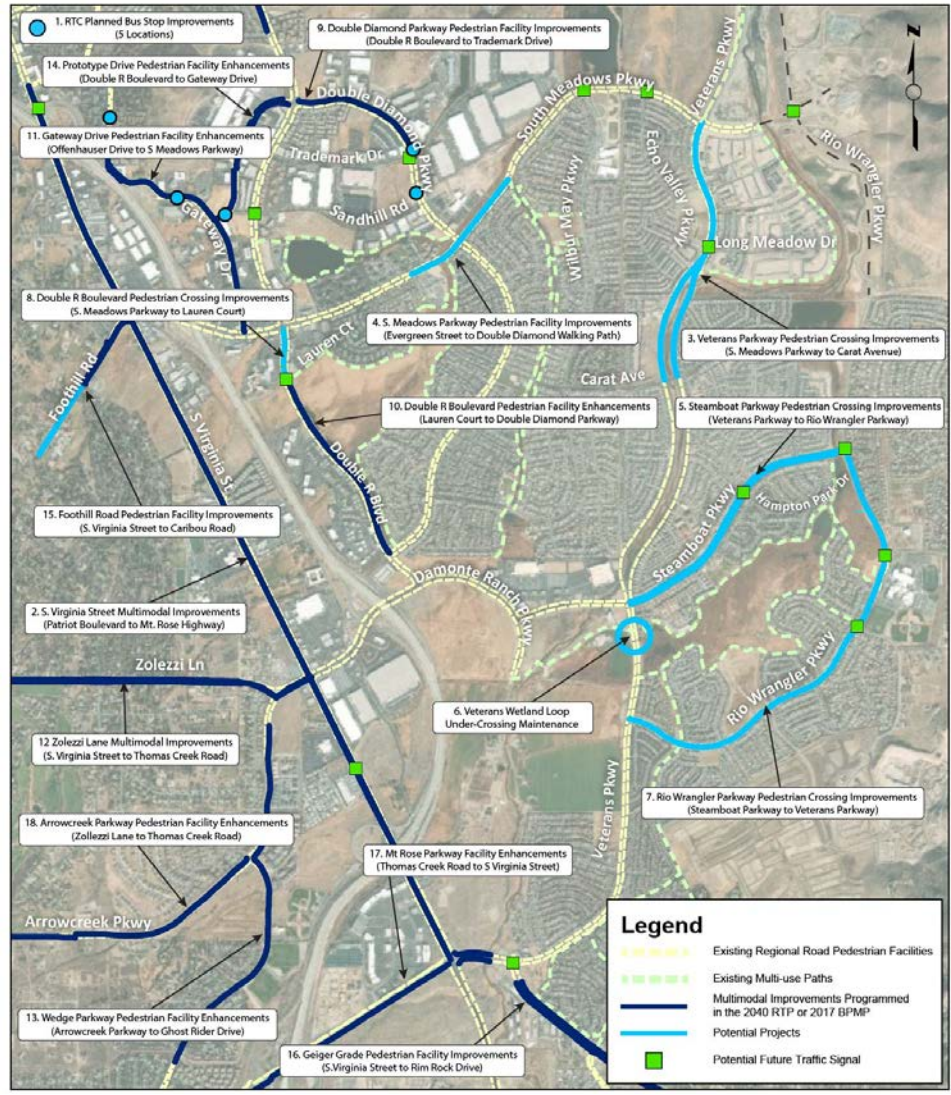
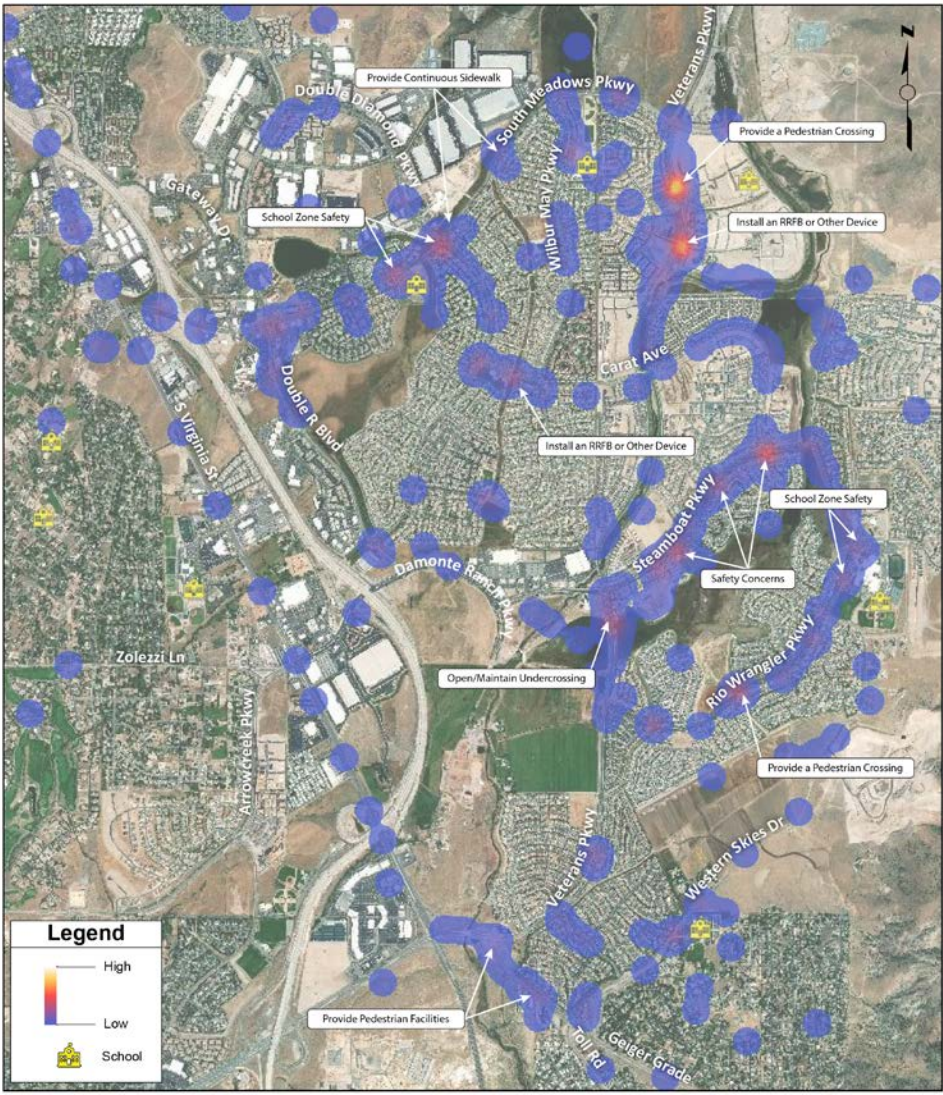
S. VIRGINIA/I-580 OFF-RAMP CONCEPT



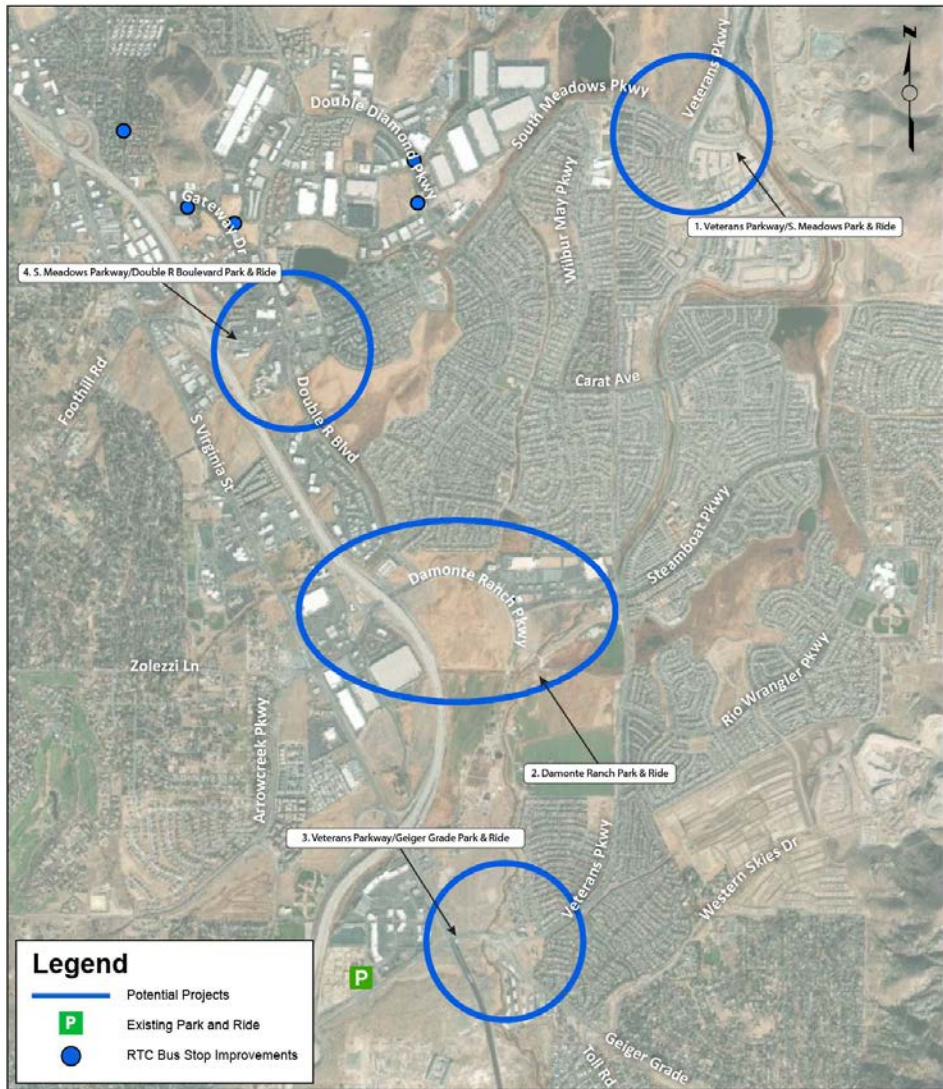
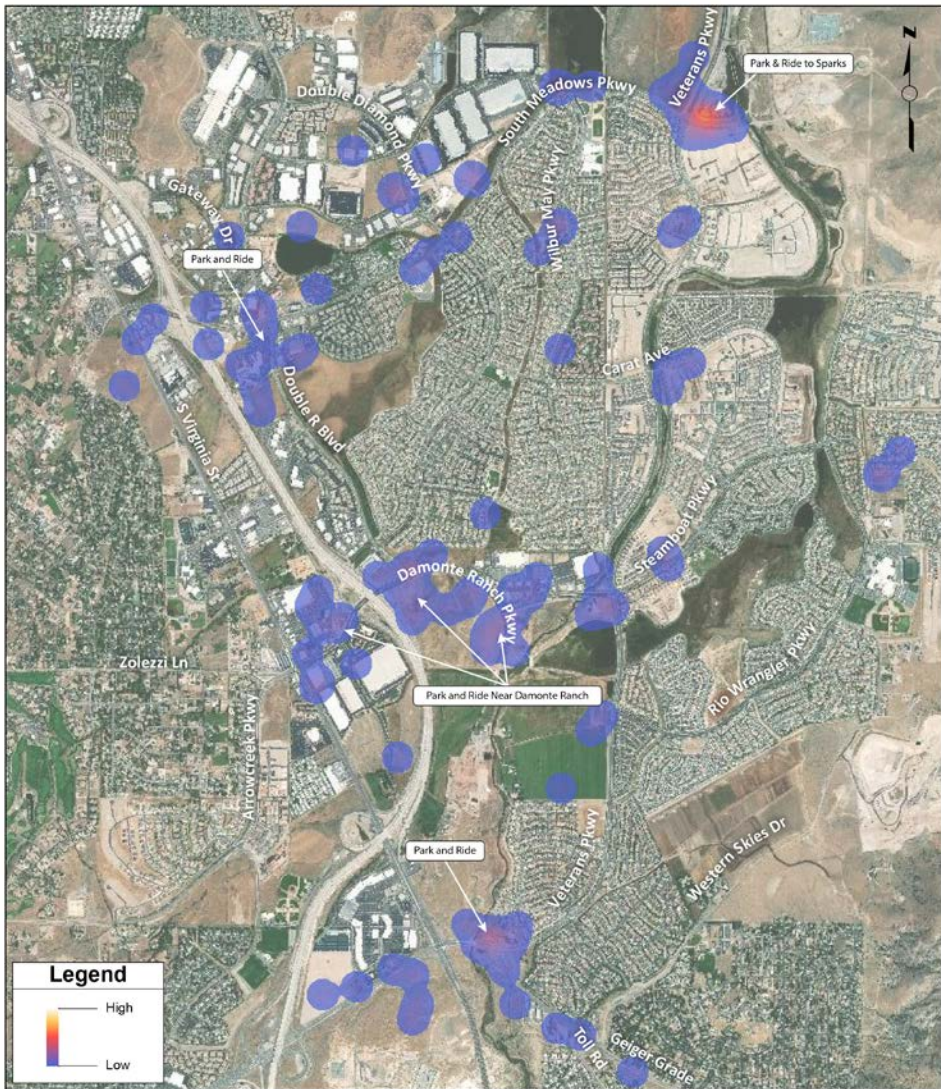
BICYCLE COMMENTS & POTENTIAL IMPROVEMENTS



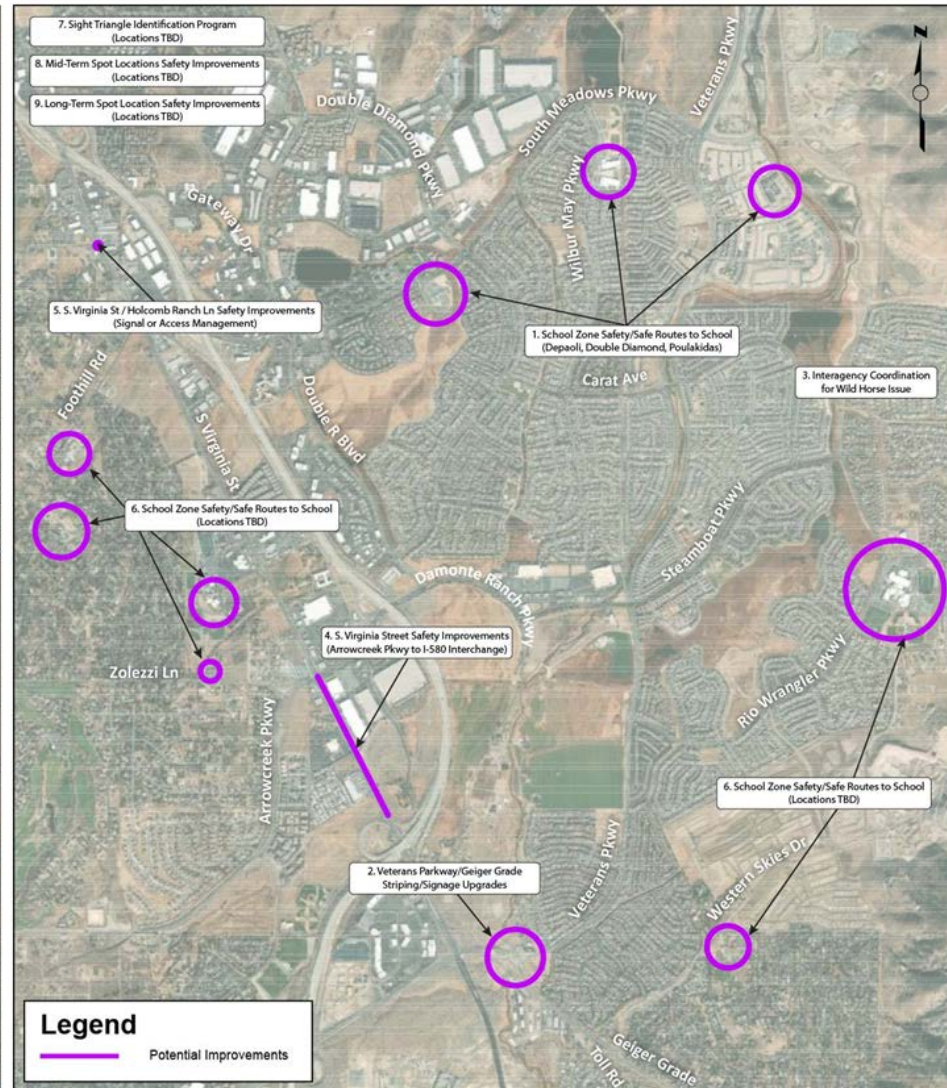
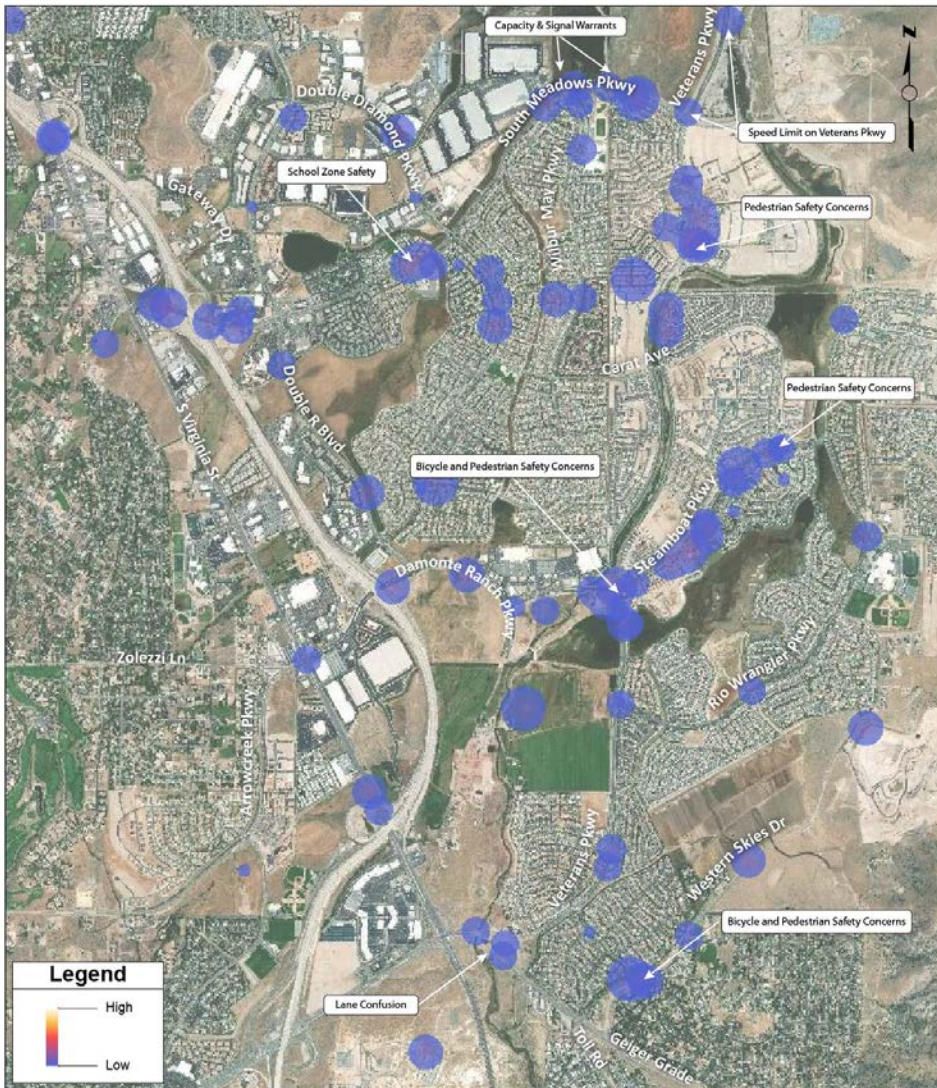
PEDESTRIAN COMMENTS & POTENTIAL IMPROVEMENTS



TRANSIT/PARK&RIDE COMMENTS & POTENTIAL IMPROVEMENTS



SAFETY COMMENTS & POTENTIAL IMPROVEMENTS



Next Steps

- Incorporate comments from this meeting
 - Comment cards, court reporter, email, RTC website
- Draft report – December
 - Draft will be available for public review & comment
- Final report– Early 2020
- Incorporate South Meadows projects into:
 - 2050 Regional Transportation Plan
 - 2020-2024 Regional Transportation Improvement Program
 - 2020-2021 Program of Projects



Thank you!

Xuan Wang
Project Manager
xwang@rtcwashoe.com