

## Why Study Sparks Boulevard?

### 1. Regionally Significant Connections

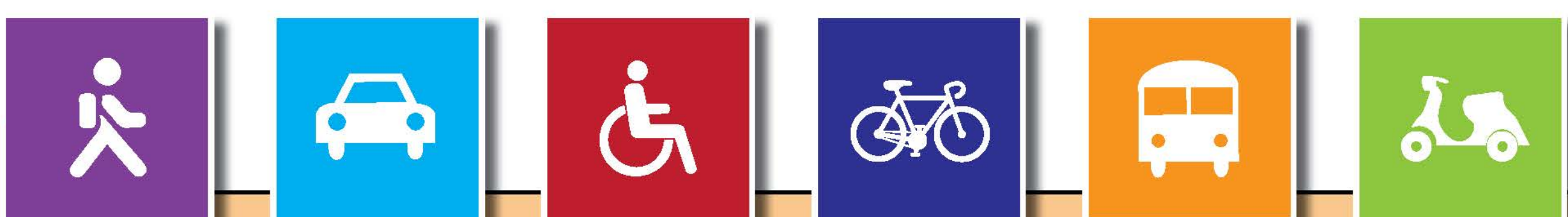
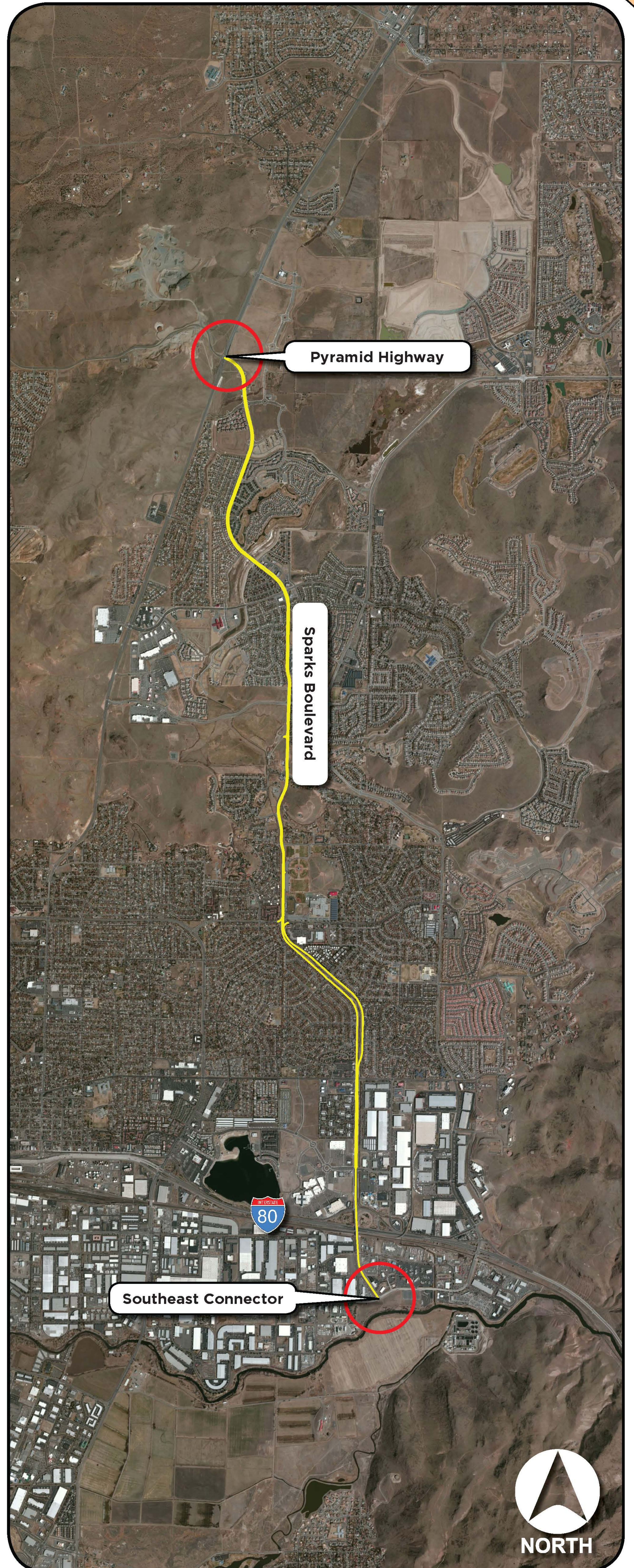
- Southeast Connector
- Pyramid Highway/US 395 Connector
- Accomodate for Future Growth

### 2. Safety

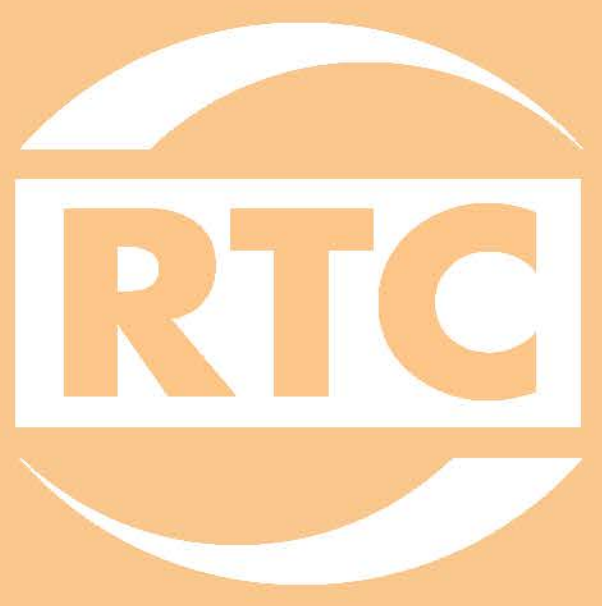
- Improve safety and security of the transportation system

### 3. Multimodal Access

- Provide mobility
- System readability
- Support community vitality
- Infrastructure Development





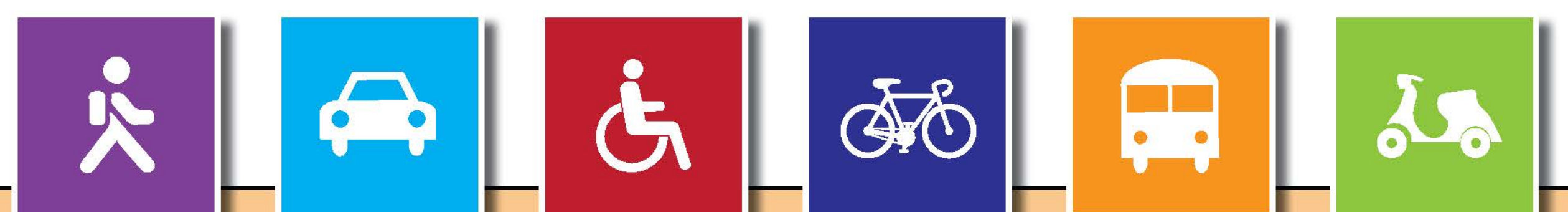
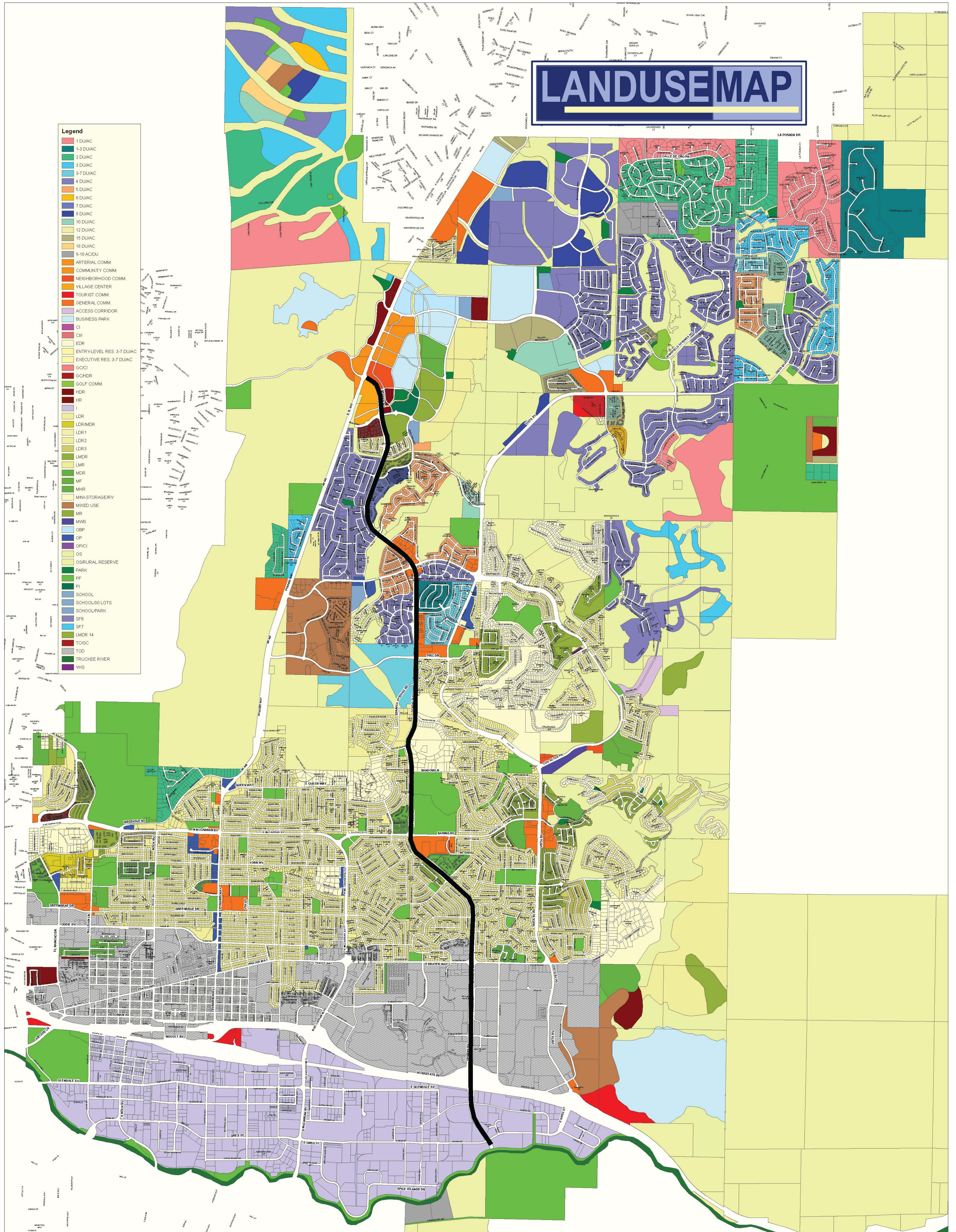


# SPARKS BOULEVARD CORRIDOR STUDY



INVESTING IN YOUR *COMMUNITY*. This is Your **RTC**.

## City of Sparks Existing Land Use Map







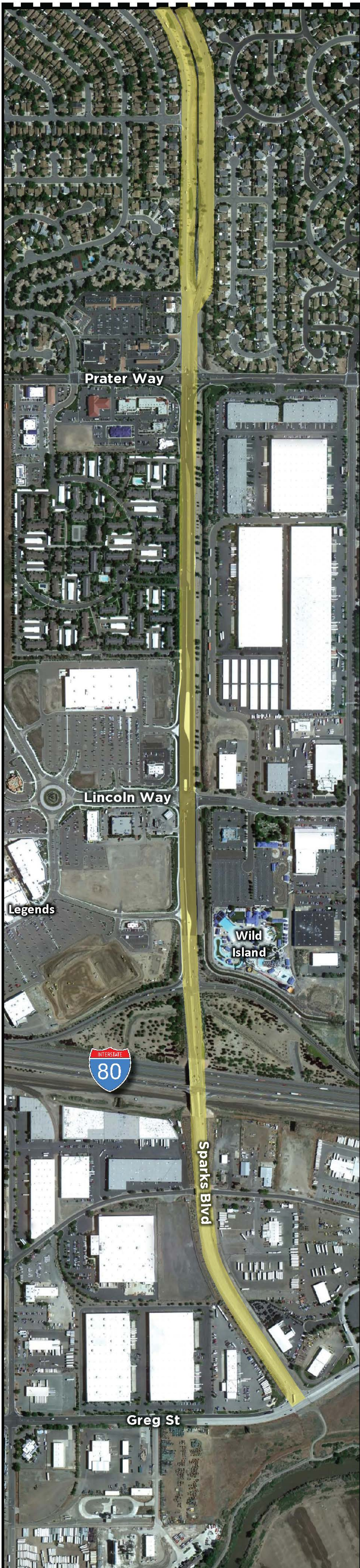
# SPARKS BOULEVARD CORRIDOR STUDY



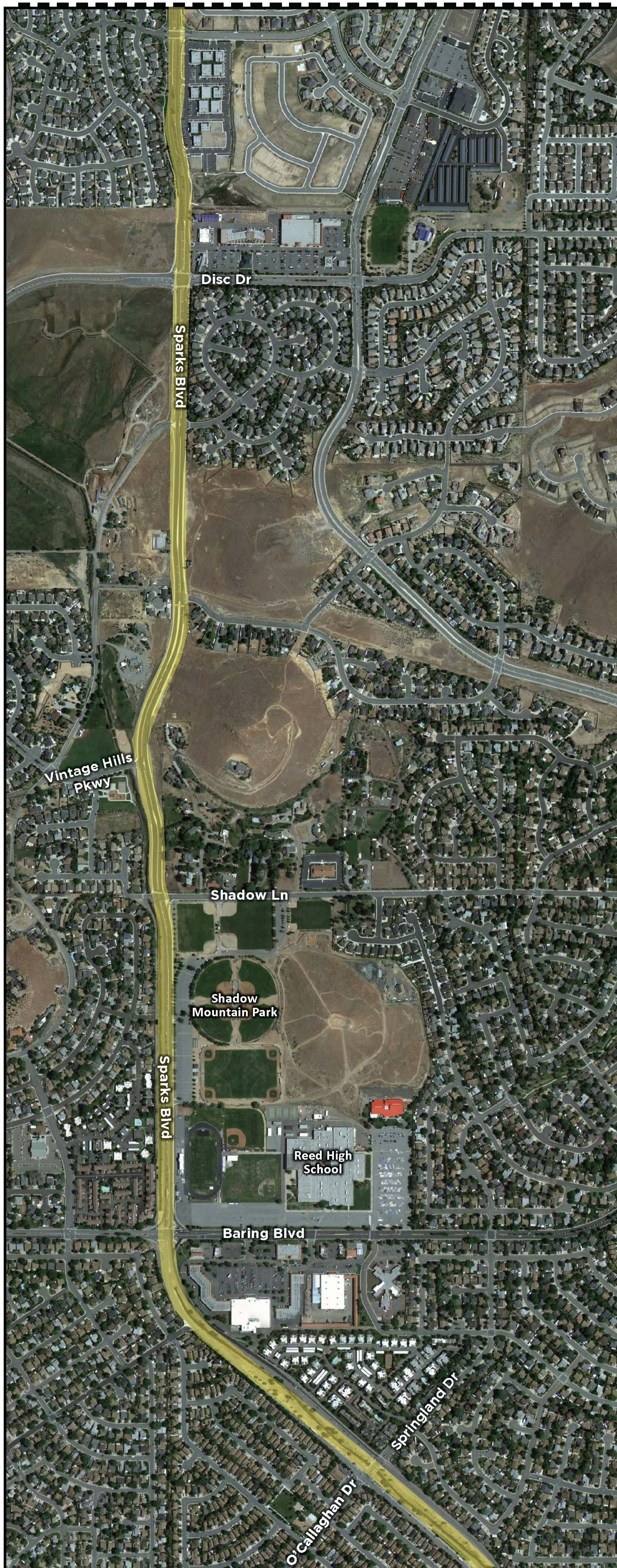
INVESTING IN YOUR *COMMUNITY*. This is Your RTC.

## Study Area

Matchline



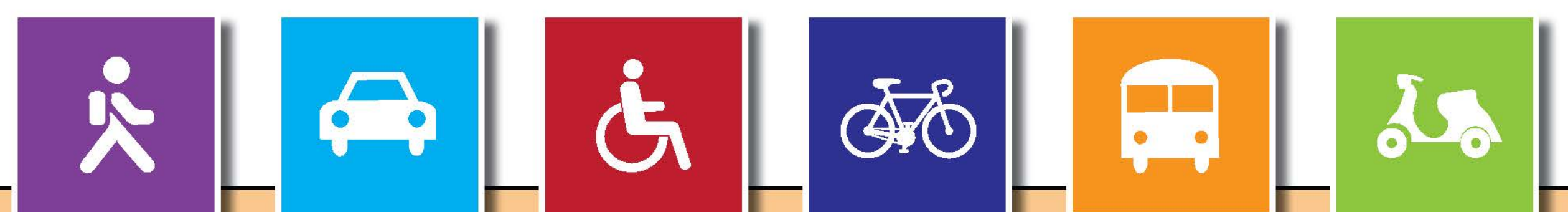
Matchline



Matchline



Matchline





## Project Goals and Objectives

### Safety Improvements

- Review crosswalk safety
- Address vehicle safety issues
- ADA Improvements

### Traffic Operations

- Impacts of the Southeast Connector and Pyramid Highway/US 395 Connector
- Role of Sparks Boulevard in overall regional roadway network
- Potential capacity improvements

### Roadway Alignment Issues Between I-80 and Lincoln Way

### Pedestrian/Bicycle Network

- Sparks Boulevard bike path connectivity & safety
- Provide better pedestrian access
- Provide better way-finding for the Sparks Boulevard bike path

### Transit Enhancements

- Include transit improvements

### Streetscape Amenities

- Consider landscape recommendations







# SPARKS BOULEVARD CORRIDOR STUDY



INVESTING IN YOUR COMMUNITY. **This is Your RTC.**

## Which two priorities are most important to you?

**Safety**



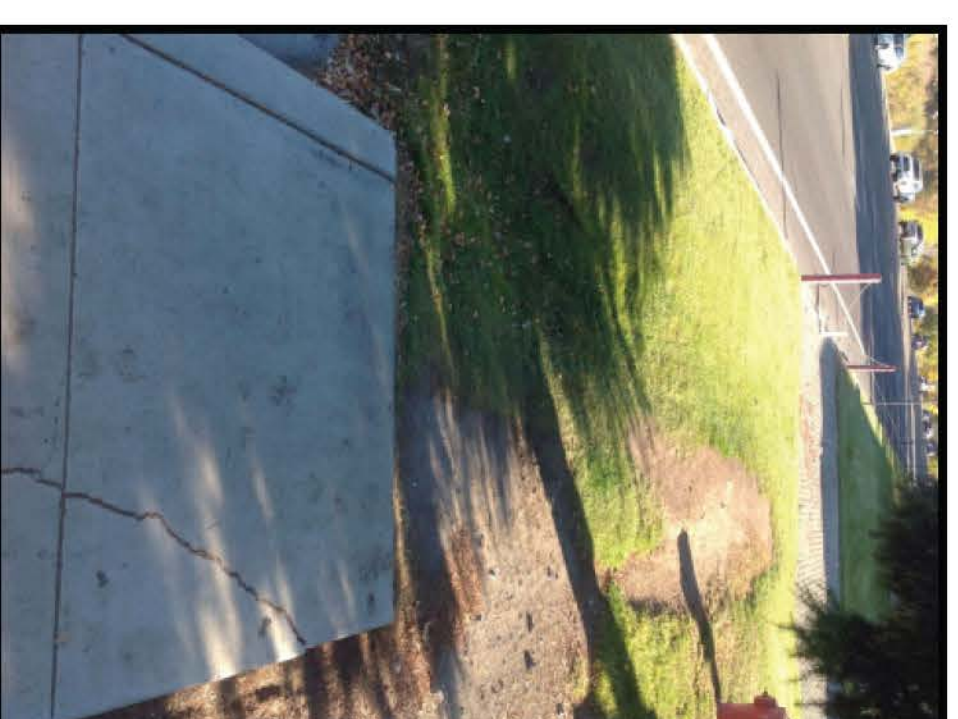
Vehicular Safety

**Amenities**



Better Way-finding  
Signage

**Pedestrian/Bicycle**



Improved Connectivity

**Roadway**



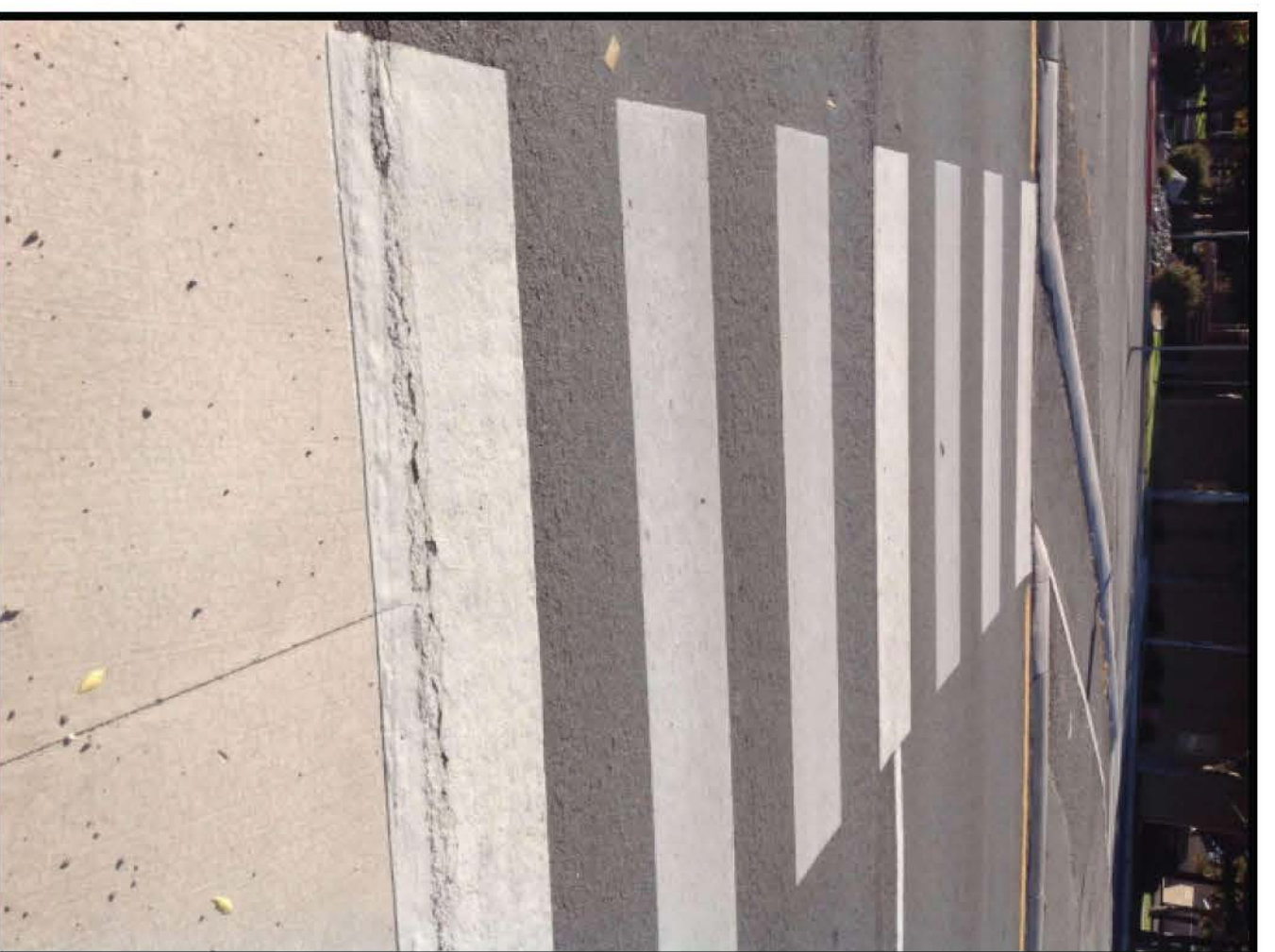
Roadway Capacity

**Transit**

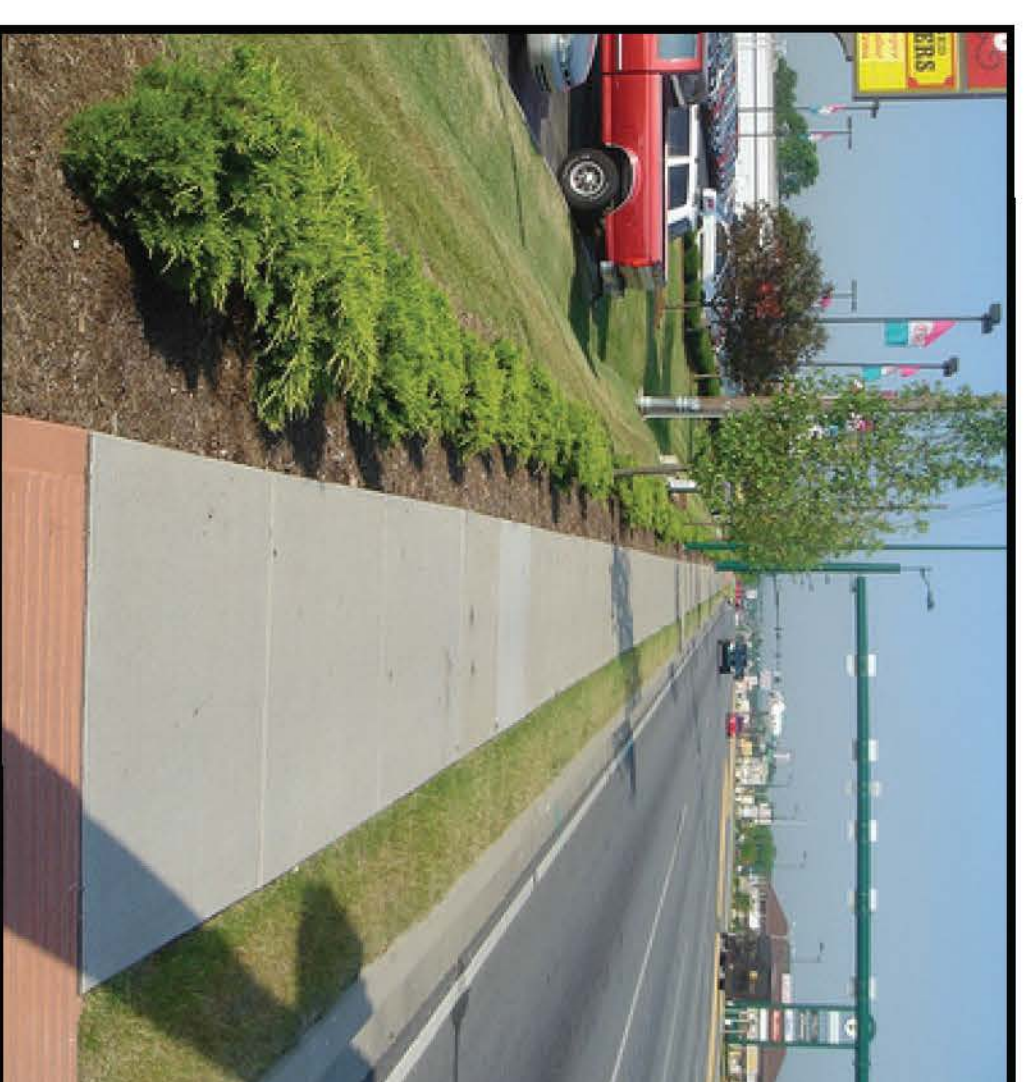


Transit Amenities

**Bike / Pedestrian Safety**



Landscaping



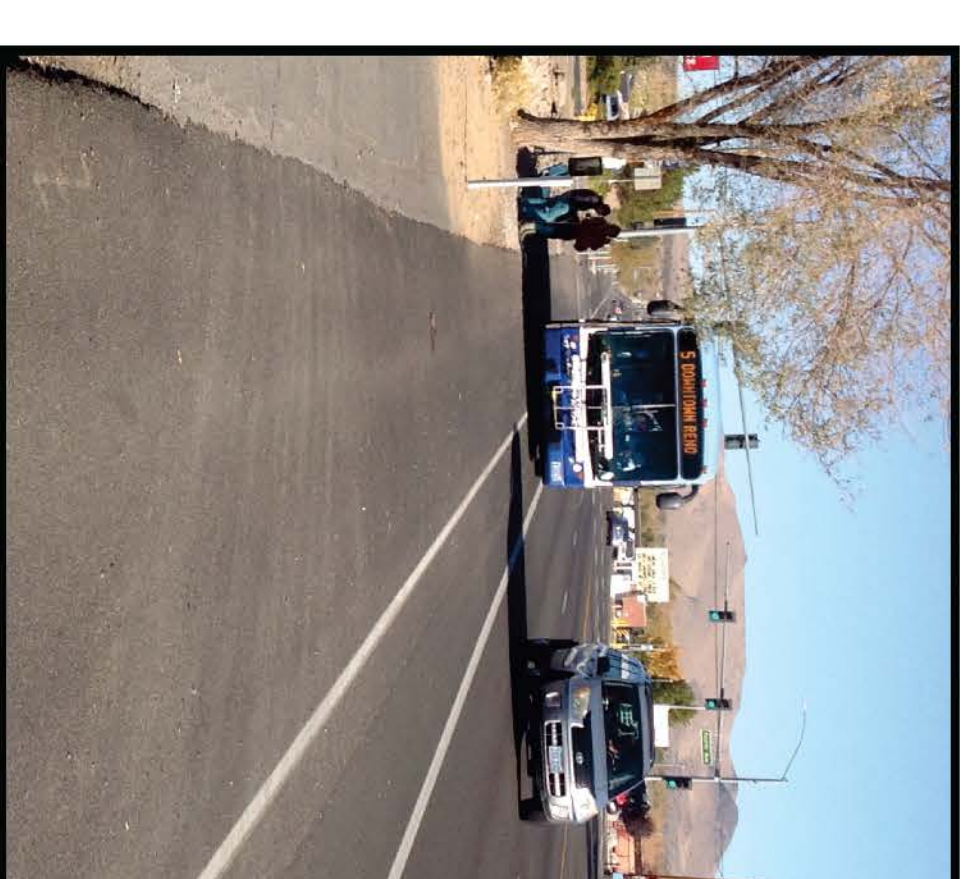
Bike/Pedestrian  
Improvements



Signal Timing

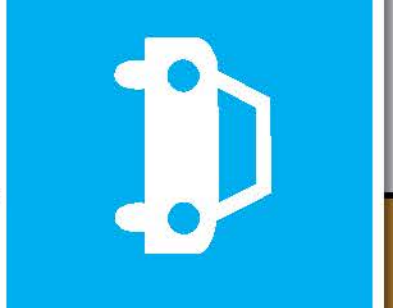


Transit Service



### Instructions

Place a token into two baskets that correspond to what is most important to you.





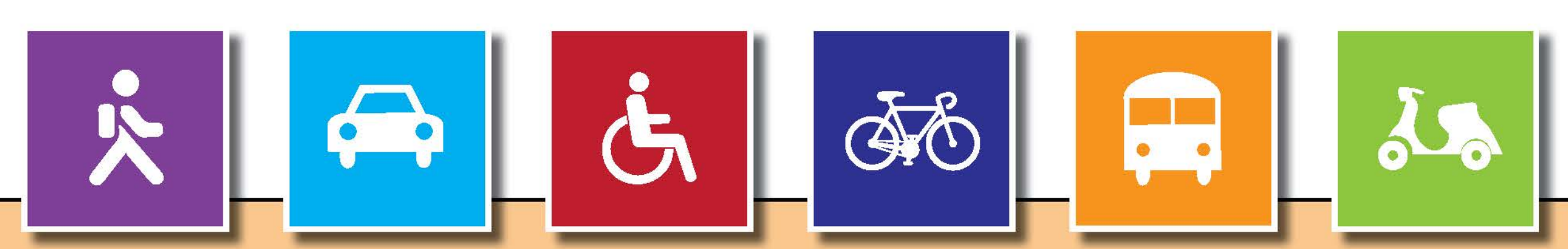
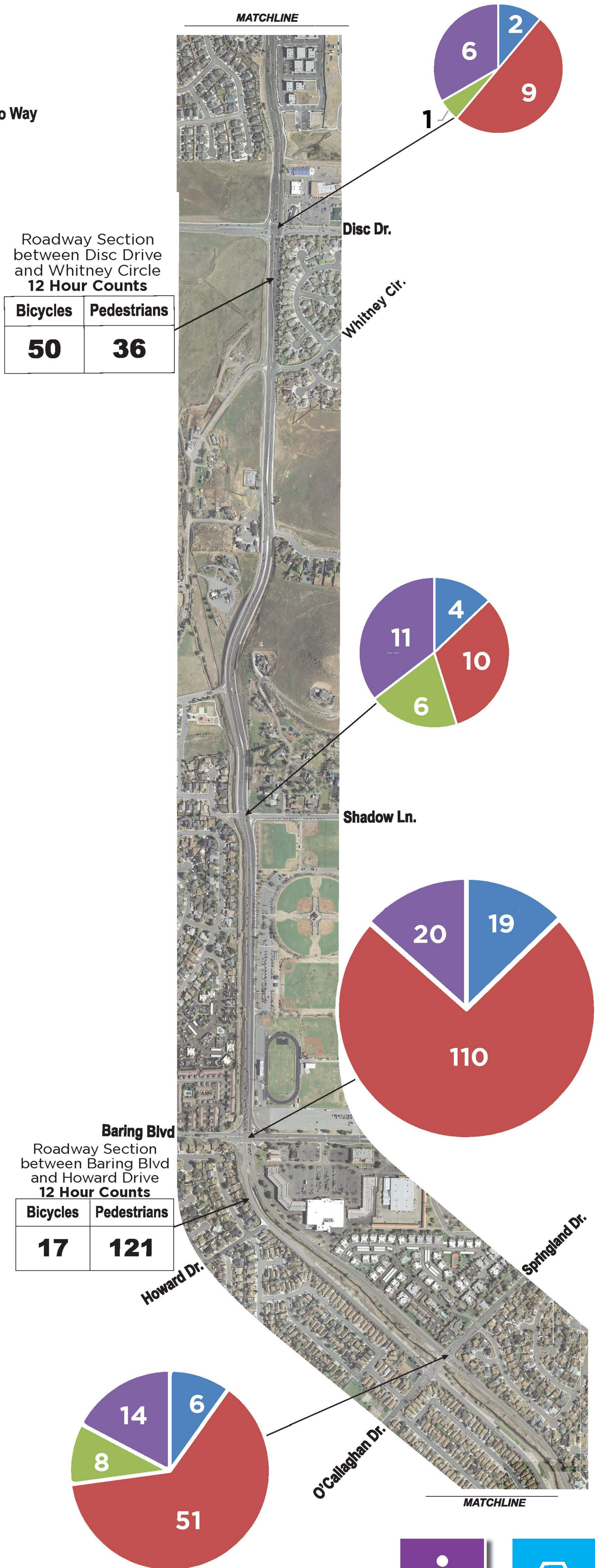
INVESTING IN YOUR *COMMUNITY*. This is Your **RTC**.

## Bicycle and Pedestrian Volumes

**LEGEND**

- PM Pedestrians (Purple)
- PM Bikes (Green)
- AM Pedestrians (Red)
- AM Bikes (Blue)

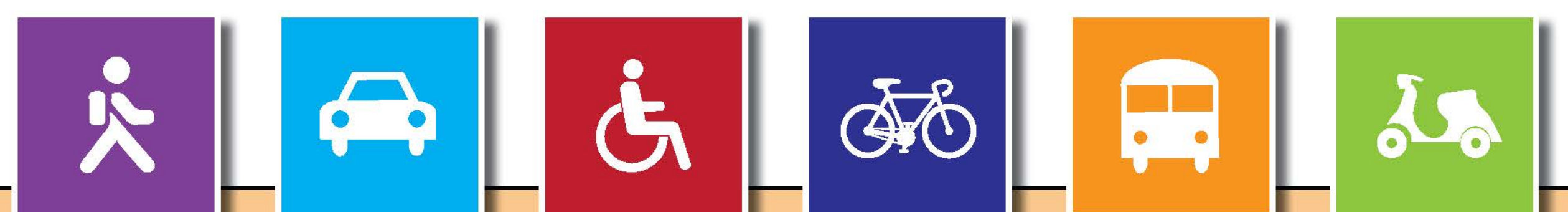
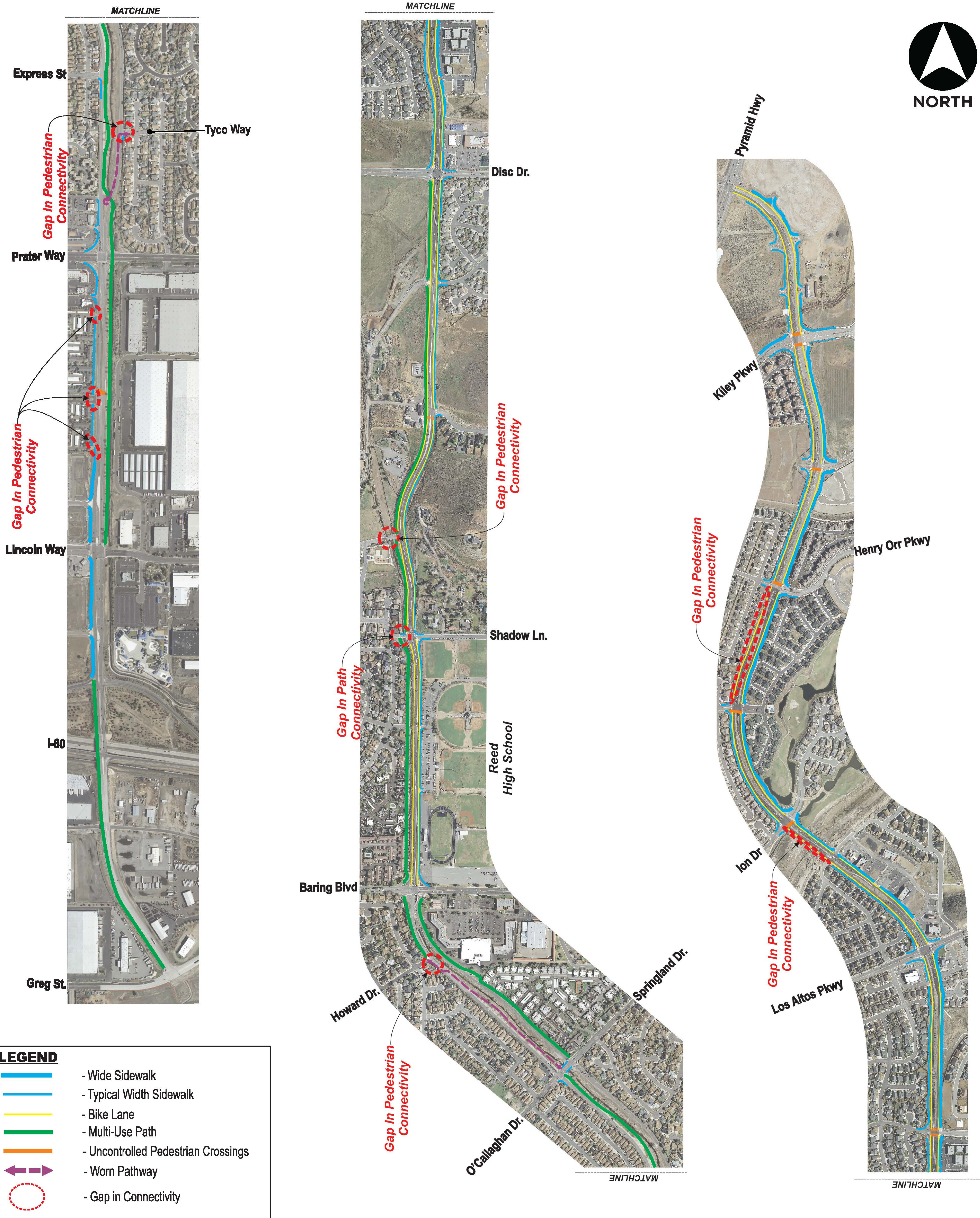
**NORTH**





INVESTING IN YOUR *COMMUNITY*. This is Your **RTC**.

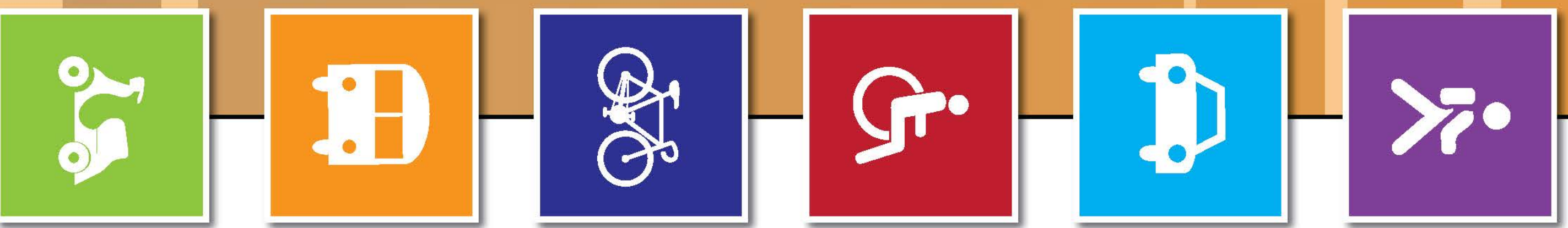
## Existing Pedestrian Facilities





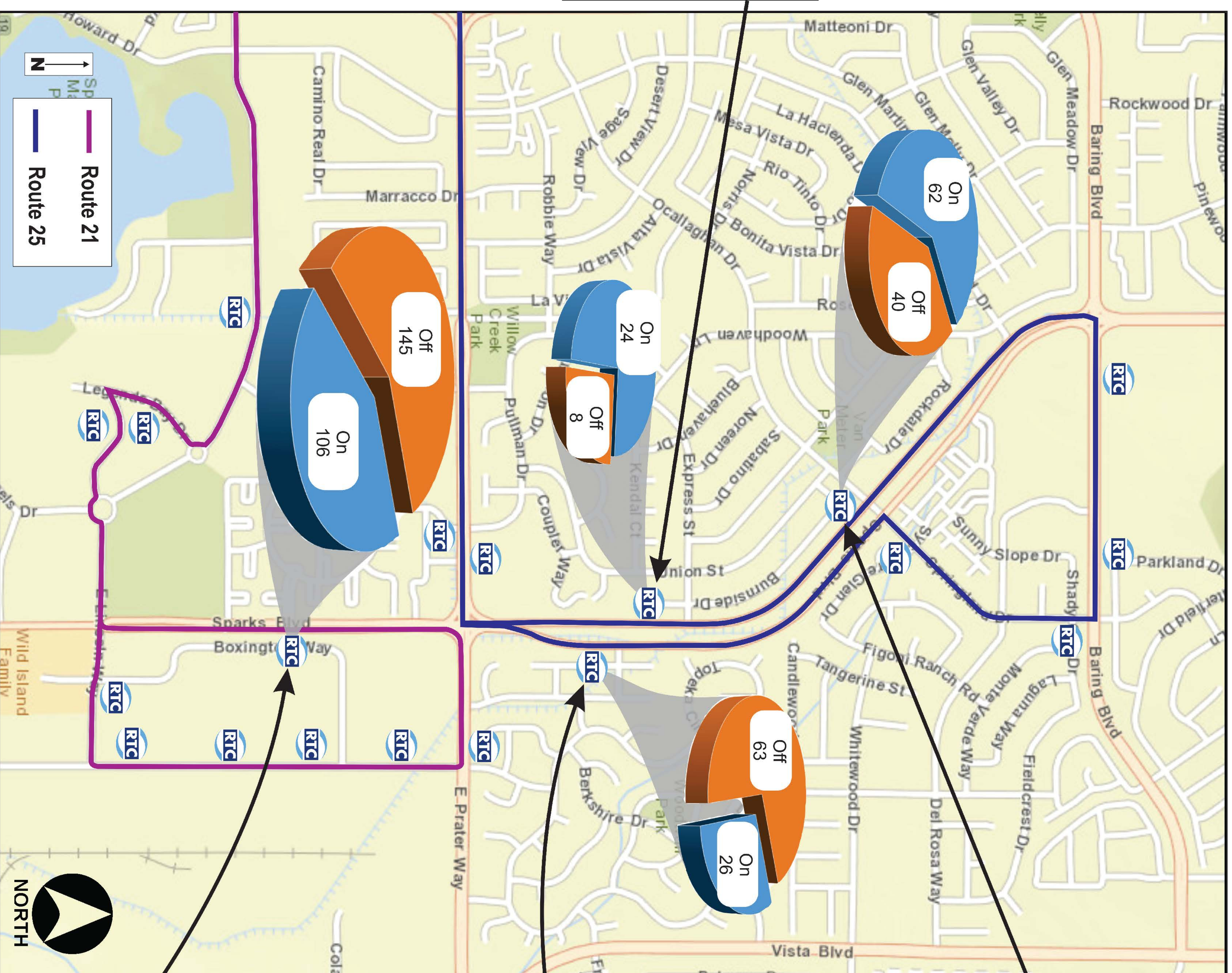
INVESTING IN YOUR COMMUNITY. **This is Your RTC.**

## Transit



**ROUTE 25 - EXPRESS**

- Amenities
- Concrete Pad
- Reflective Bus Signal



**ROUTE 25 - SPRINGLAND**

- Amenities
- Concrete Pad
- Reflective Bus Signal

**ROUTE 25 - TYCO**

- Amenities
- Concrete Pad
- Trash Can

**ROUTE 21 - PARK VISTA**

- Amenities
- Concrete Pad
- Bench
- Trash Can



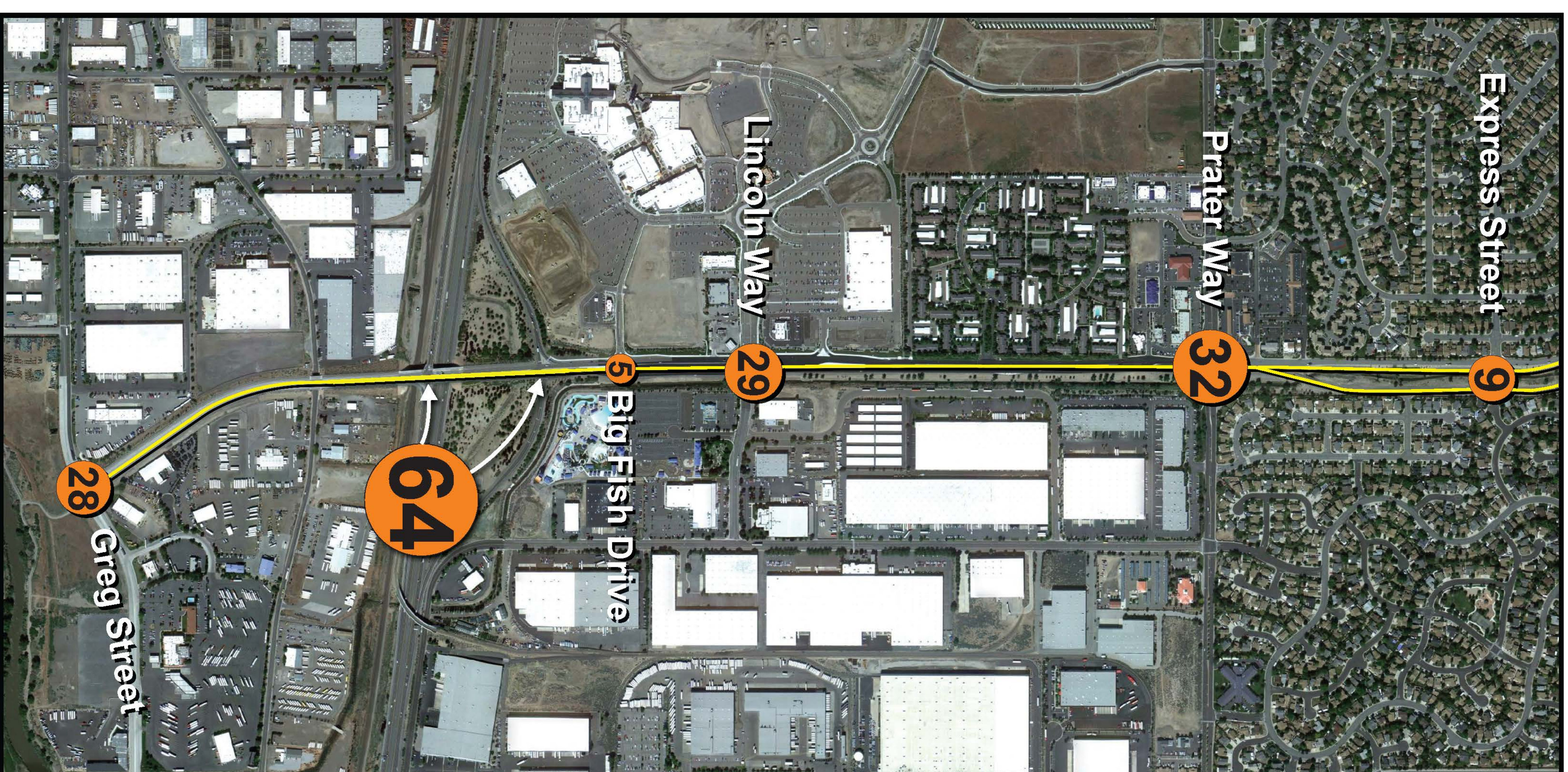
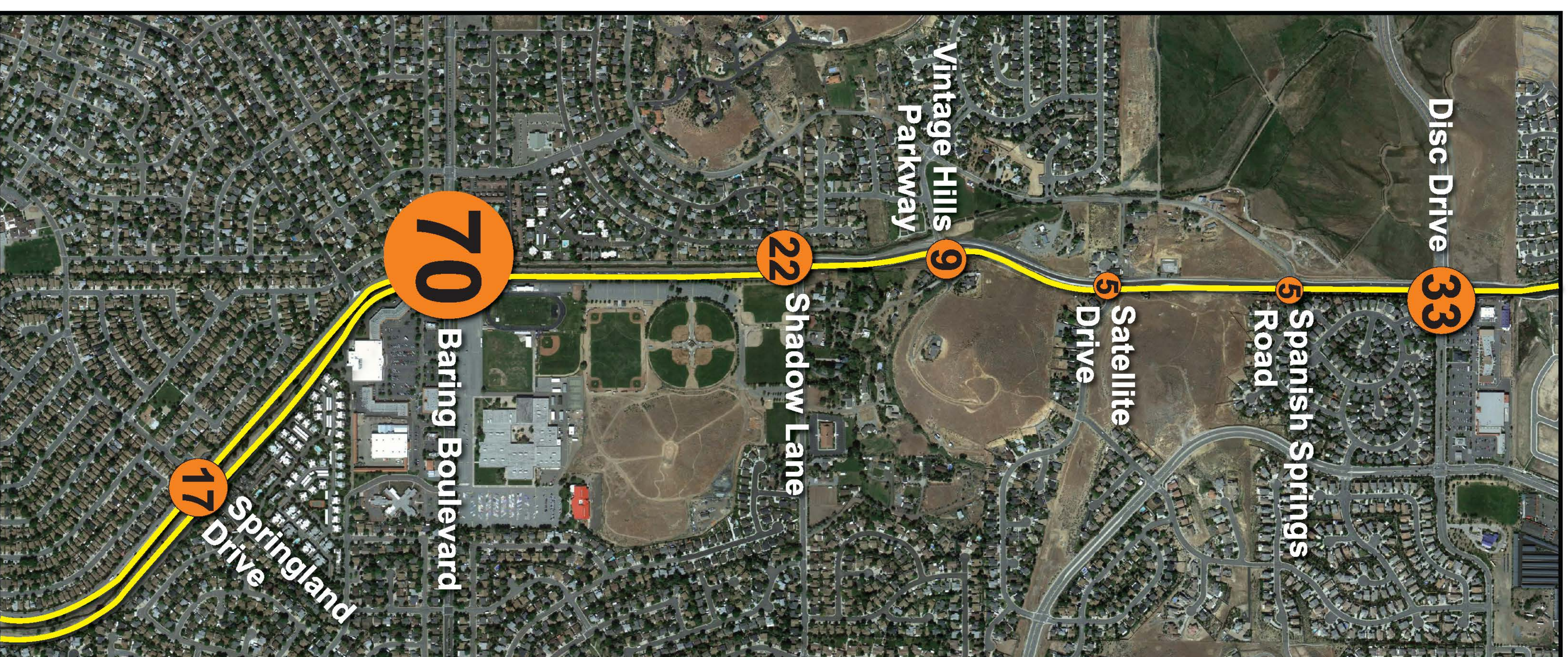
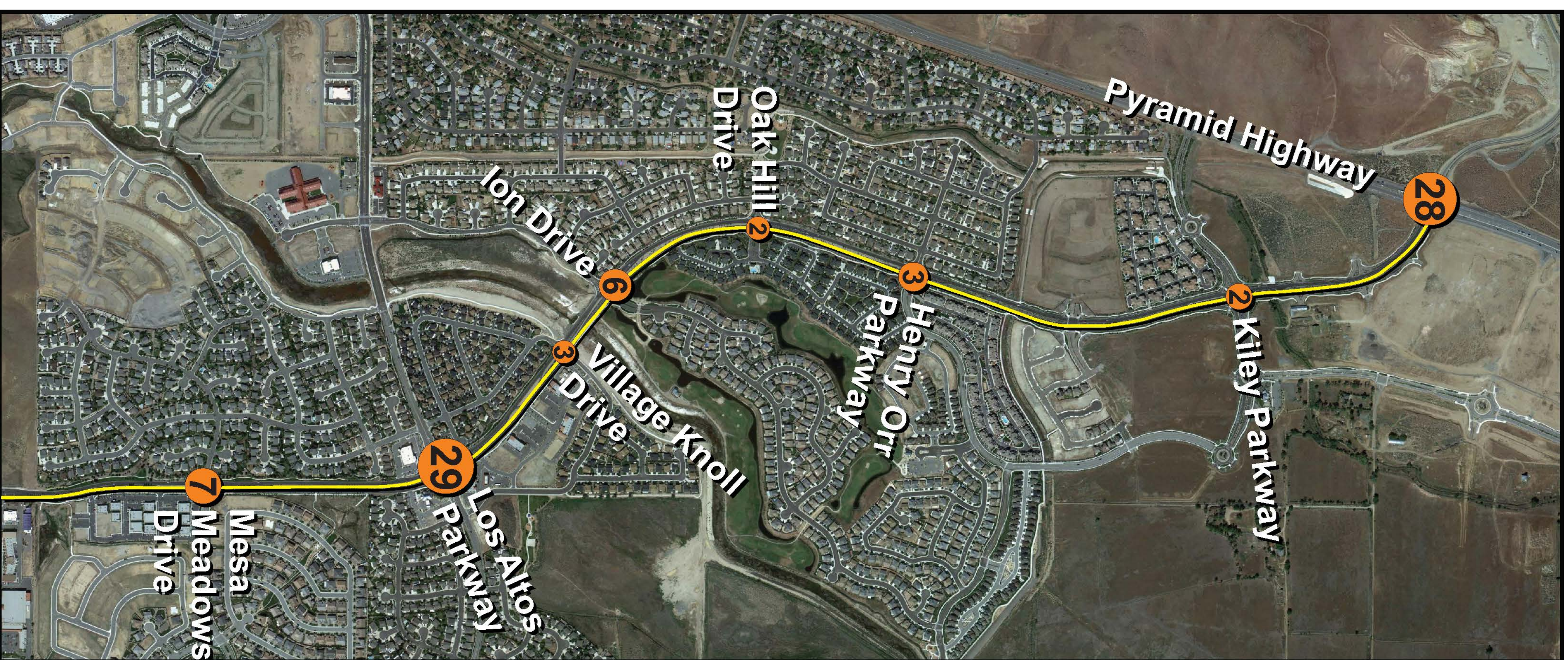


# SPARKS BOULEVARD CORRIDOR STUDY



INVESTING IN YOUR COMMUNITY. **This is Your RTC.**

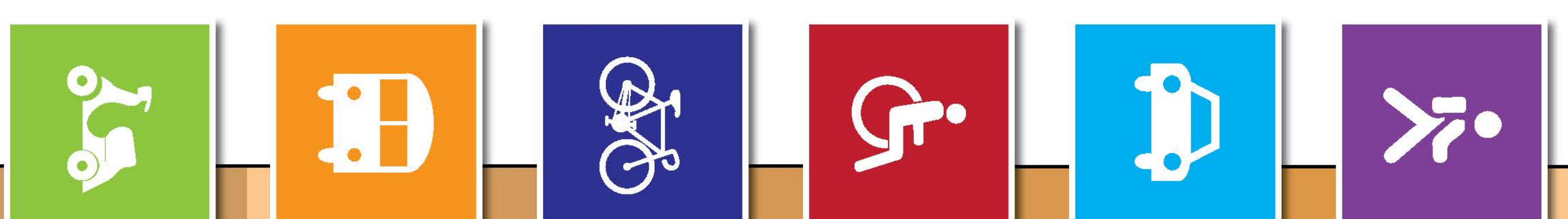
## Traffic Collisions at Intersections January 2008 - June 2013



**Legend**

**XX** - Number of Crashes at Intersection

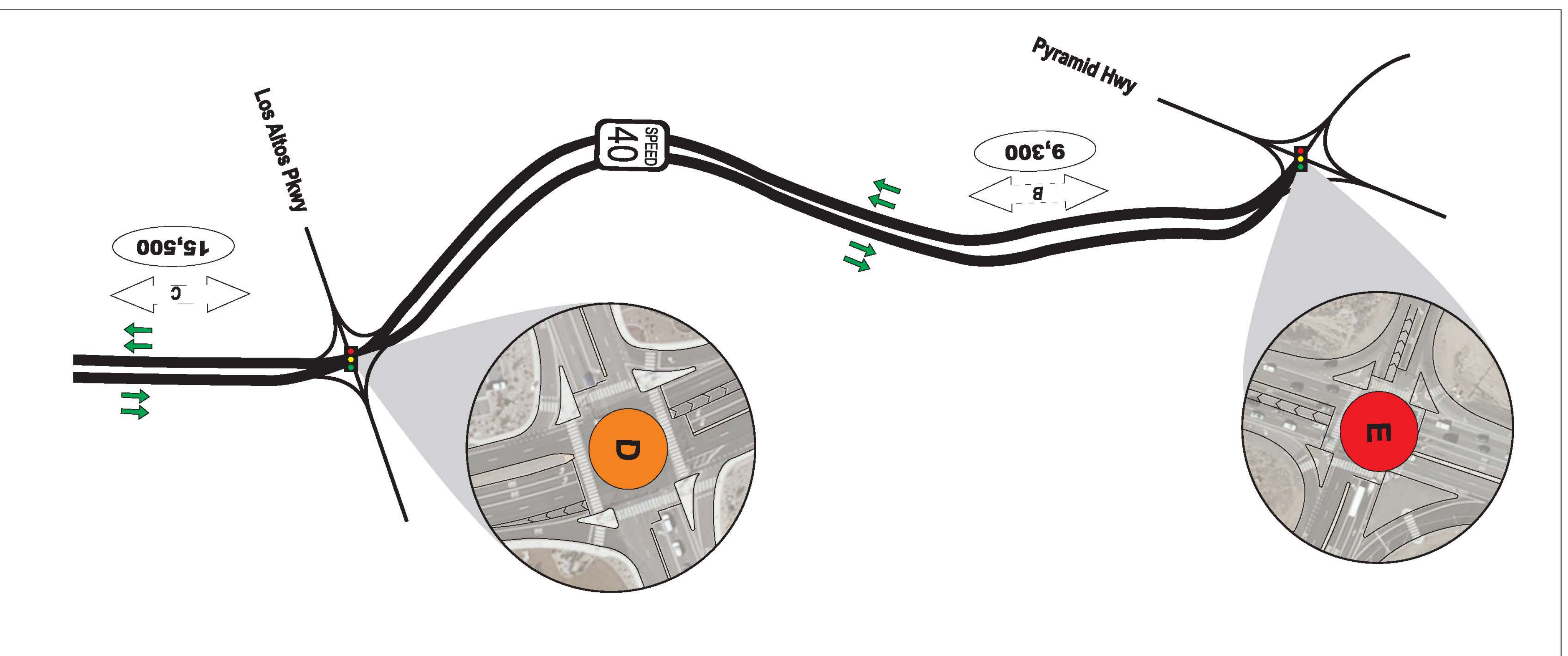
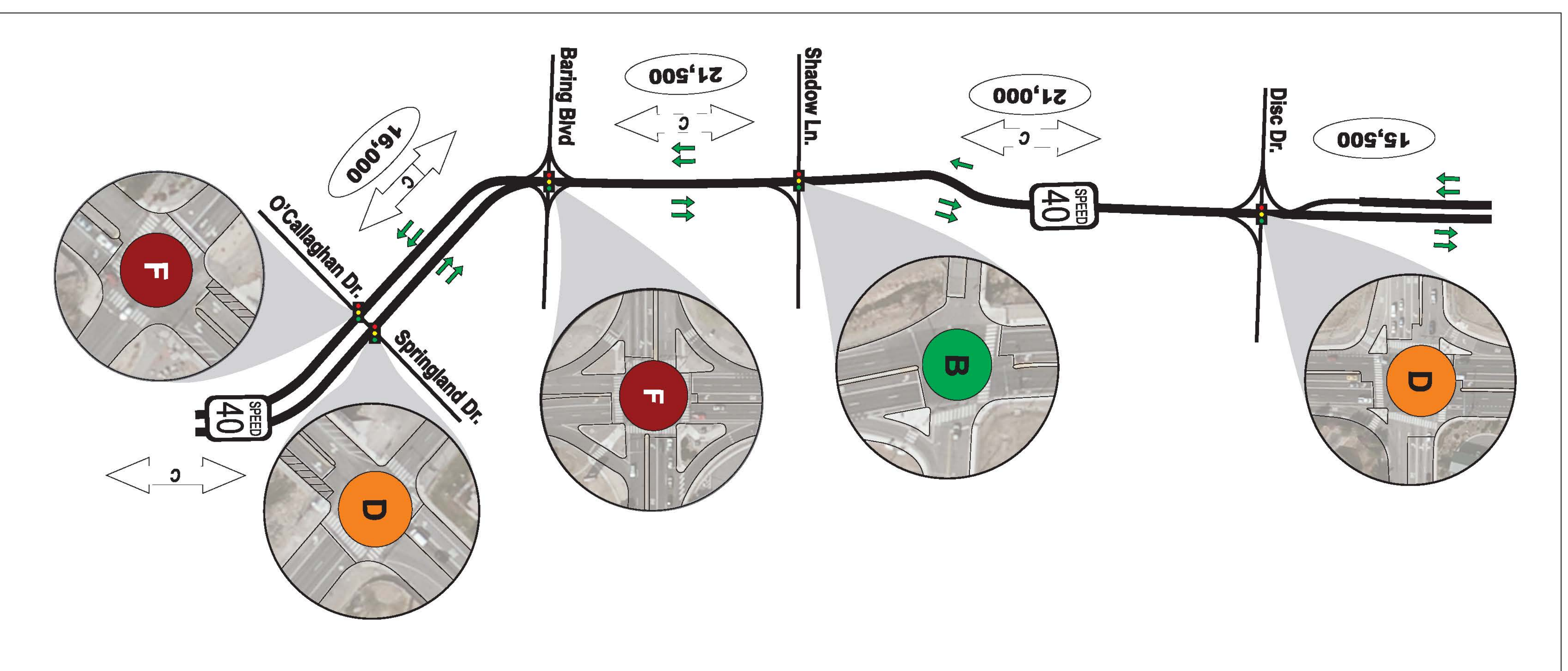
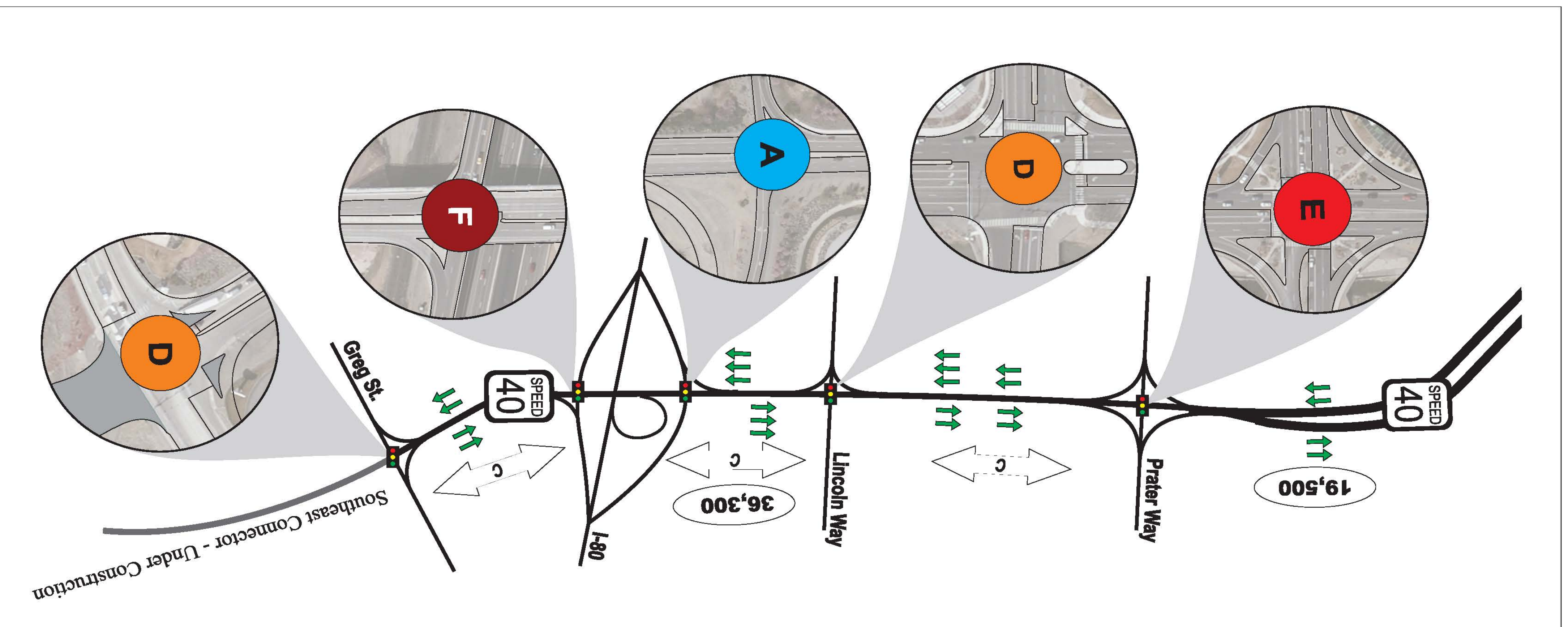
NORTH





INVESTING IN YOUR COMMUNITY. **This is Your RTC.**

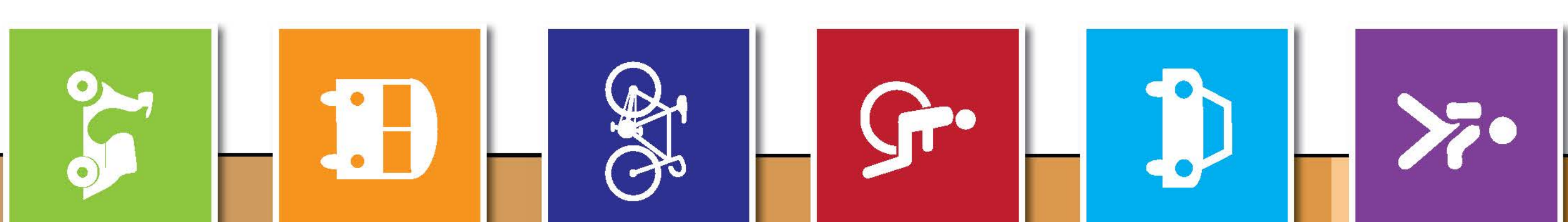
## Existing Vehicular Level of Service



### LEGEND

- Arterial Level of Service
- Average Daily Traffic
- Signal
- Lane Configuration
- Speed Limit

Level of Service	Delay At Intersection
<b>A</b>	< 10 Seconds
<b>B</b>	10-20 Seconds
<b>C</b>	20-35 Seconds
<b>D</b>	35-55 Seconds
<b>E</b>	55-80 Seconds
<b>F</b>	> 80 Seconds







# SPARKS BOULEVARD CORRIDOR STUDY



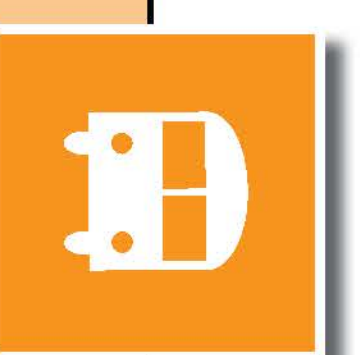
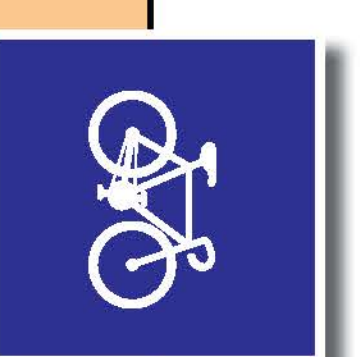
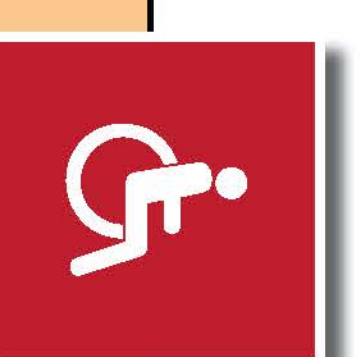
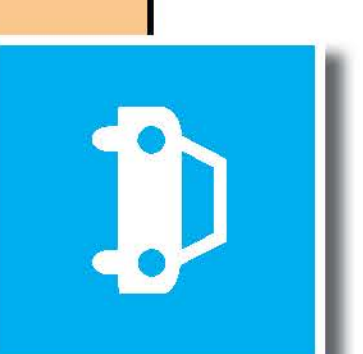
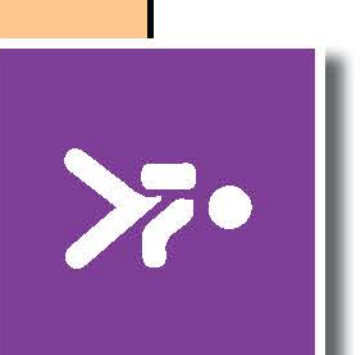
INVESTING IN YOUR **COMMUNITY**. **This is Your RTC.**

## Help Us Establish a Vision for Sparks Boulevard

Which one do YOU prefer?

- This is Sparks' Boulevard: Safe, Enjoyable and Efficient Travel for Everyone
- Two Wheels or Four, Recreation and More
- Sparks Boulevard - Keeping Residents Connected on Two Wheels, Four Wheels, and Their Own Two Feet
- This Is Sparks Boulevard - Providing Safe and Enjoyable Connections to Residents on Two Wheels, Four Wheels, and Their Own Two Feet
- Sparks Boulevard - Connecting Two Wheels, Four Wheels and More; Safely, Smartly, and Scenically

**Place a sticker on the vision statement that you most agree with or write your own idea on the cards provided.**







# SPARKS BOULEVARD CORRIDOR STUDY



INVESTING IN YOUR COMMUNITY. *This is Your RTC.*

## We need your input on

**Auto?**

**Bike?**

**Pedestrian?**

**Transit?**

**Safety?**

**How could Sparks Boulevard be better?**

**Write your comments and ideas on the map.**

