

Legend

- Freeways and Ramps
- Existing Regional Roads
- ⋯ Planned Regional Roads
- Local Road (Non-Regional)
- Existing Traffic Signal
- School



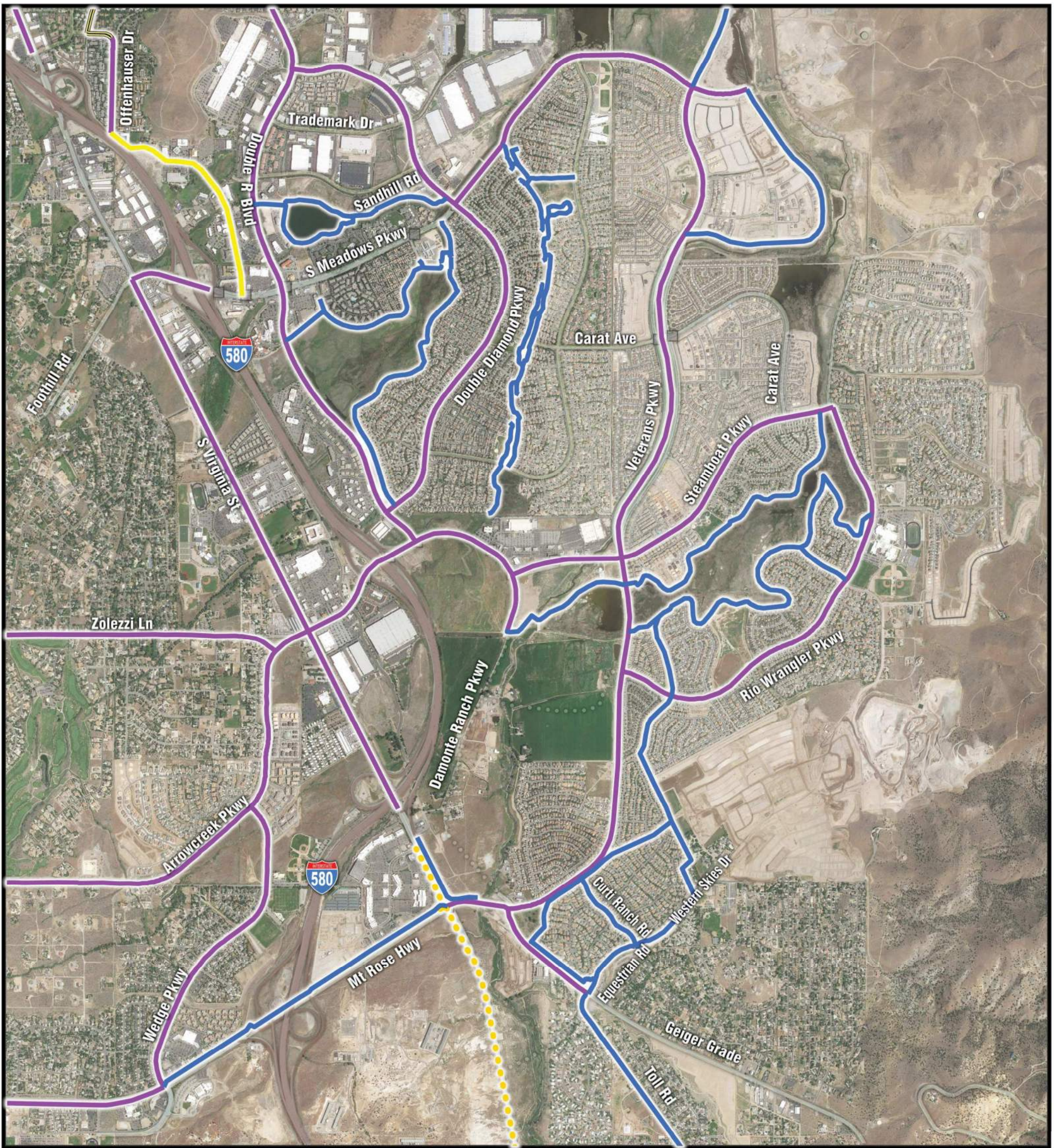
Study Overview

The South Meadows Multimodal Transportation Study will identify needs and alternative transportation improvements for regional roads in the study area. The study will focus on traffic operations analysis and improvements, safety improvements, pedestrian and bicycle connectivity and transit opportunities such as Park and Ride locations. The study is generally in the South Meadows area in Reno and Washoe County as shown in the map above.



STUDY AREA AND OVERVIEW





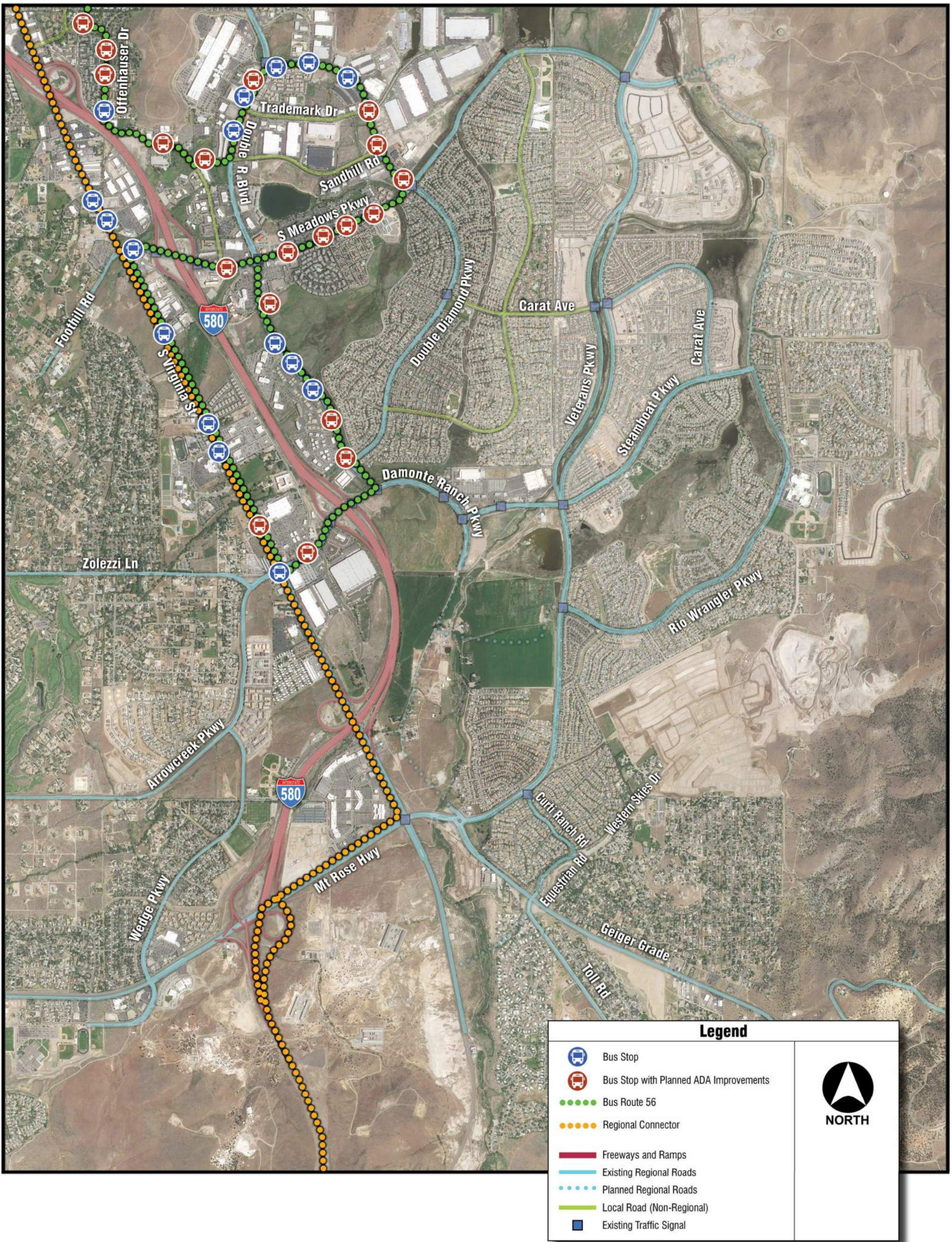
Legend

- Existing Multi-Use Path
- Existing Bike Lane
- Existing Sharrow
- Existing Bike Route
- Planned Bike Lane



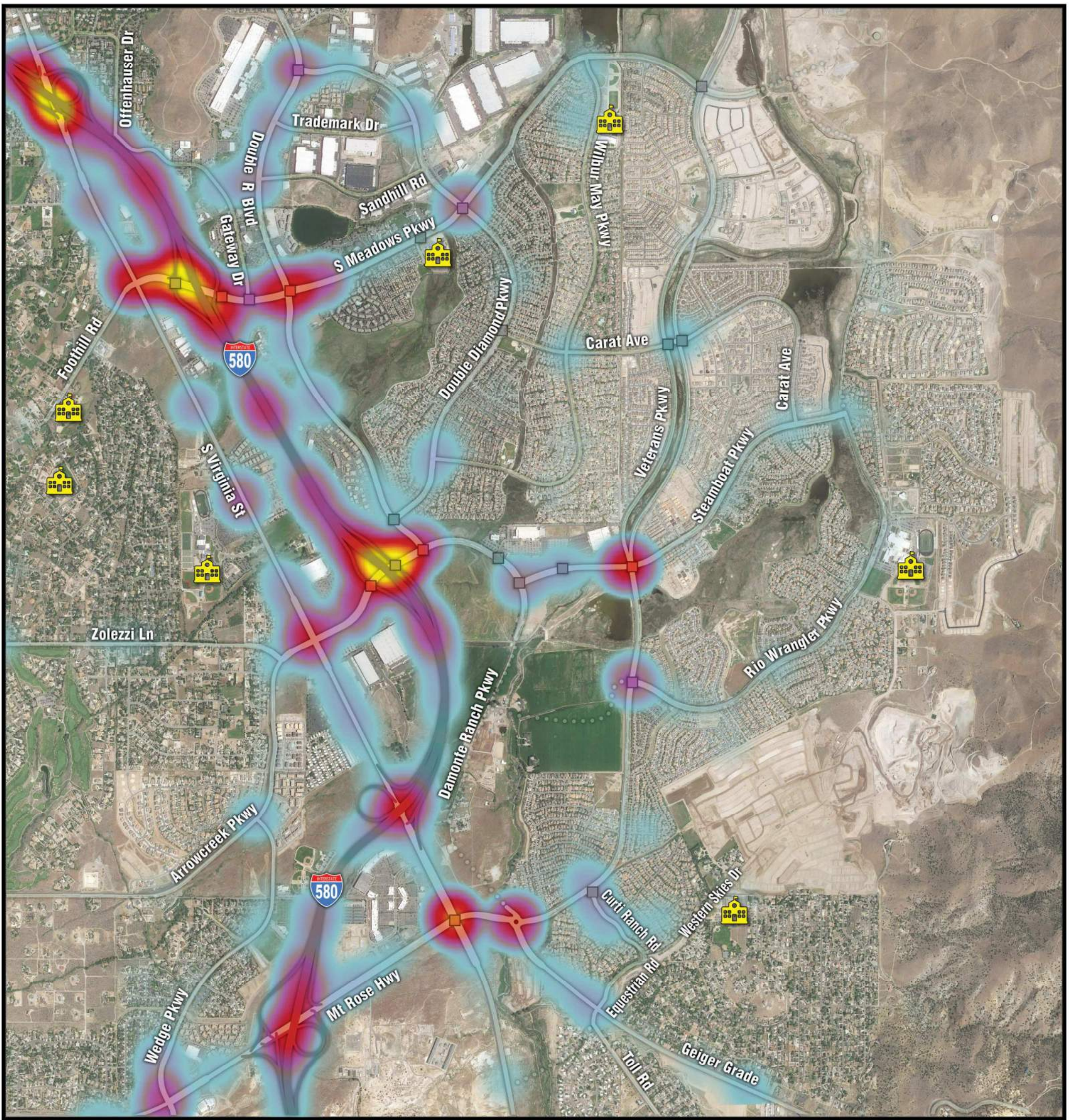
EXISTING BIKE FACILITIES






EXISTING TRANSIT FACILITIES





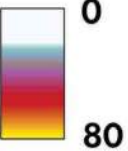
| Legend | |
|--------|---------------------------|
| | Freeways and Ramps |
| | Existing Regional Roads |
| | Planned Regional Roads |
| | Local Road (Non-Regional) |
| | Existing Traffic Signal |
| | School |

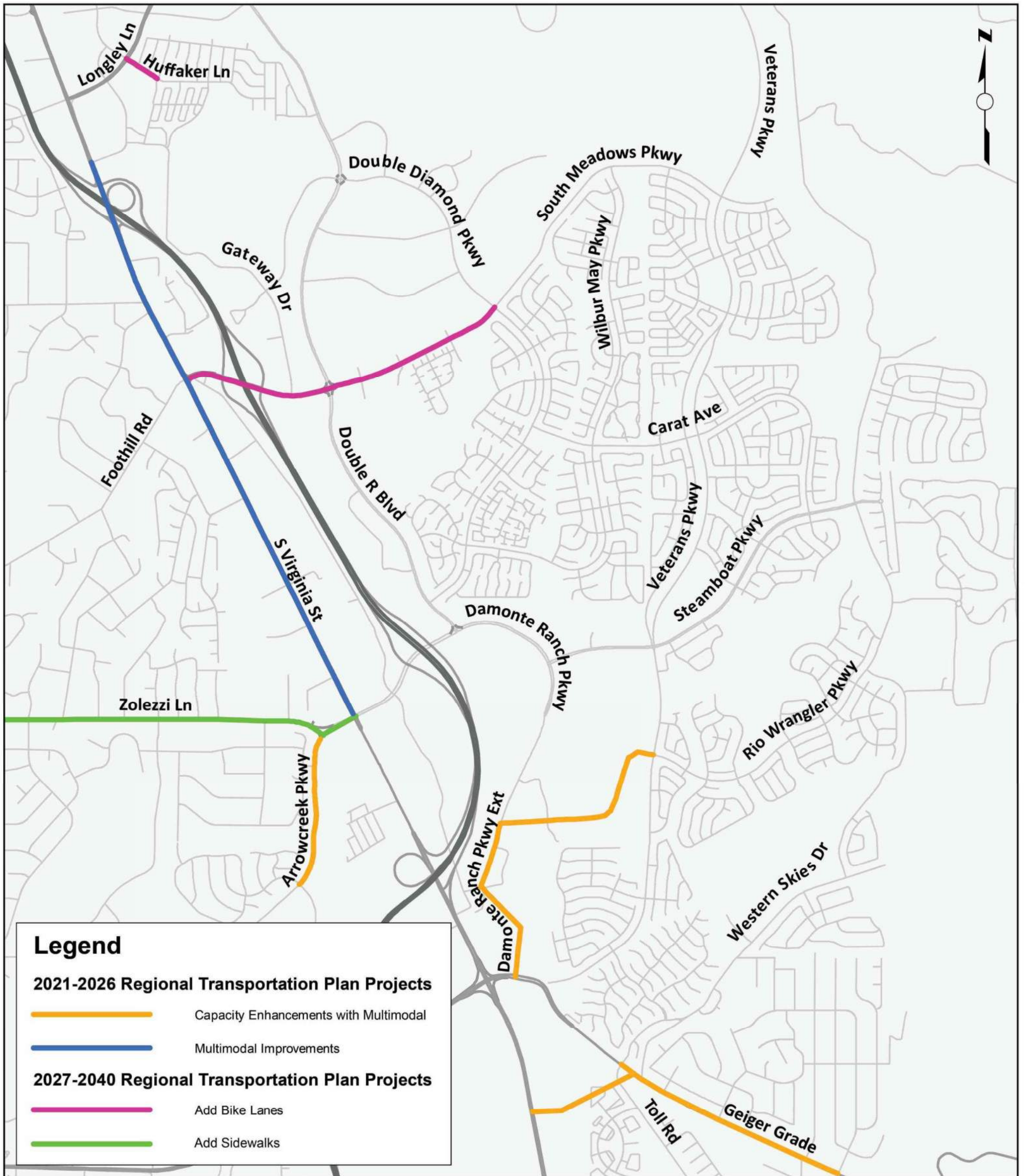


NORTH

South Meadows Crash History

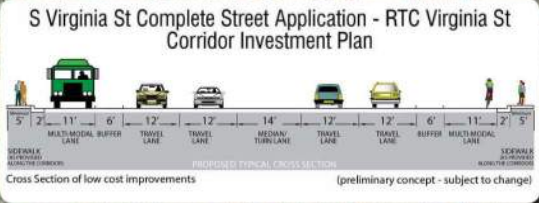
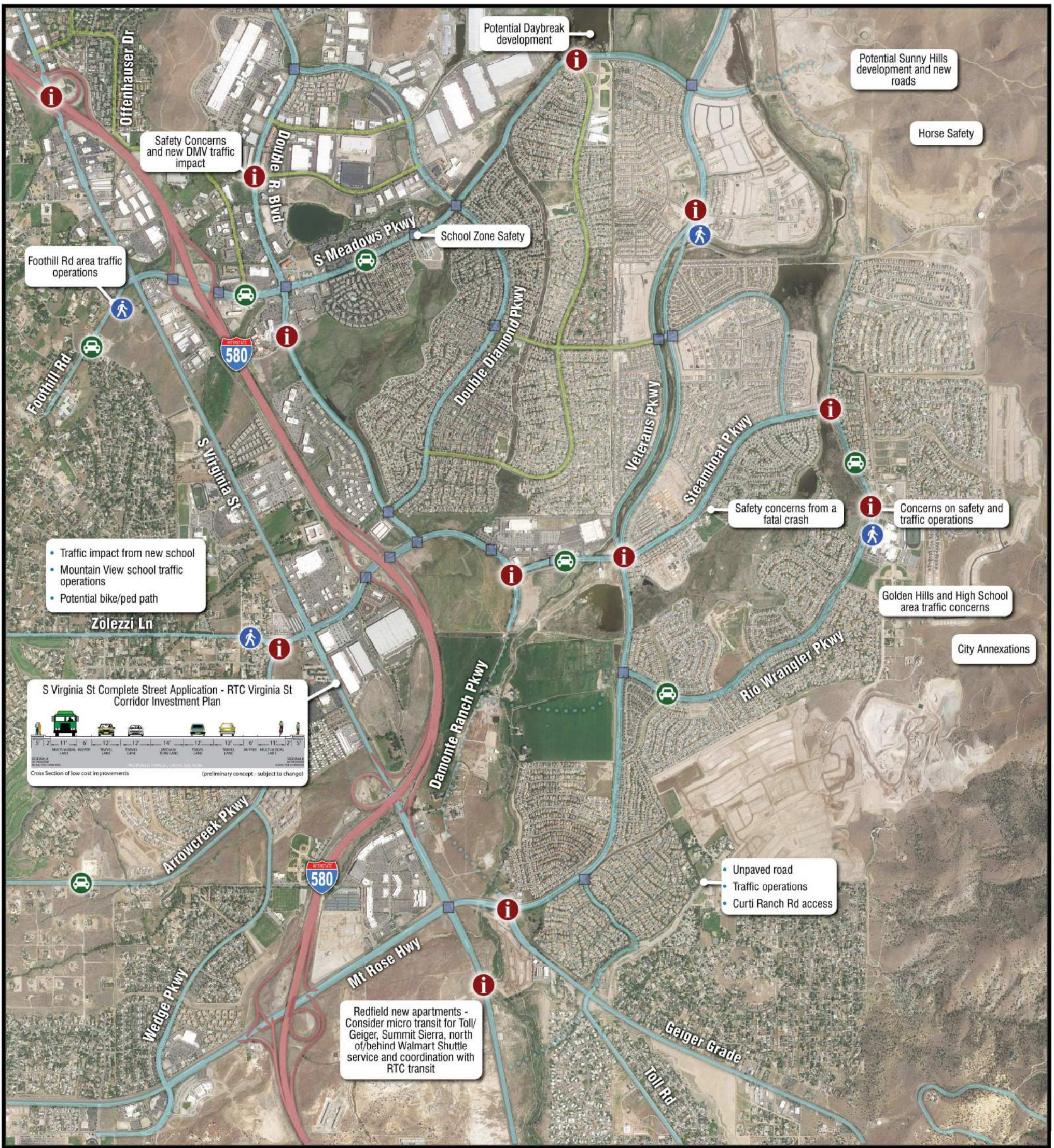
Notes: Crash data obtained from NDOT for years 2015 to 2017.





**CURRENTLY PLANNED IMPROVEMENTS PER
2040 REGIONAL TRANSPORTATION PLAN**



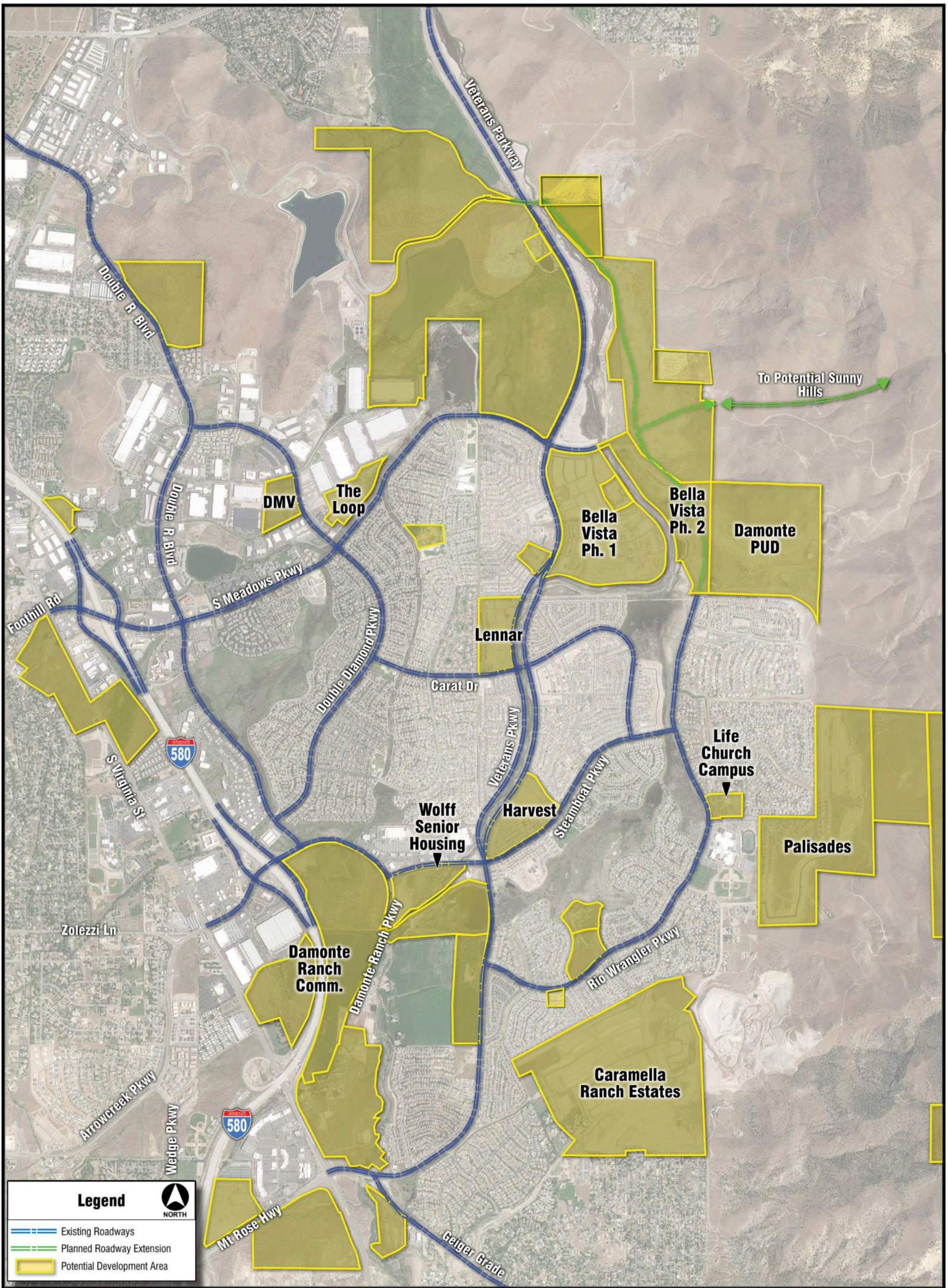


Legend

- Freeways and Ramps
- Existing Regional Roads
- Planned Regional Roads
- Local Road (Non-Regional)
- Existing Traffic Signal
- Intersections of Interest
- Bicycle/Pedestrian Concerns
- Capacity Concerns

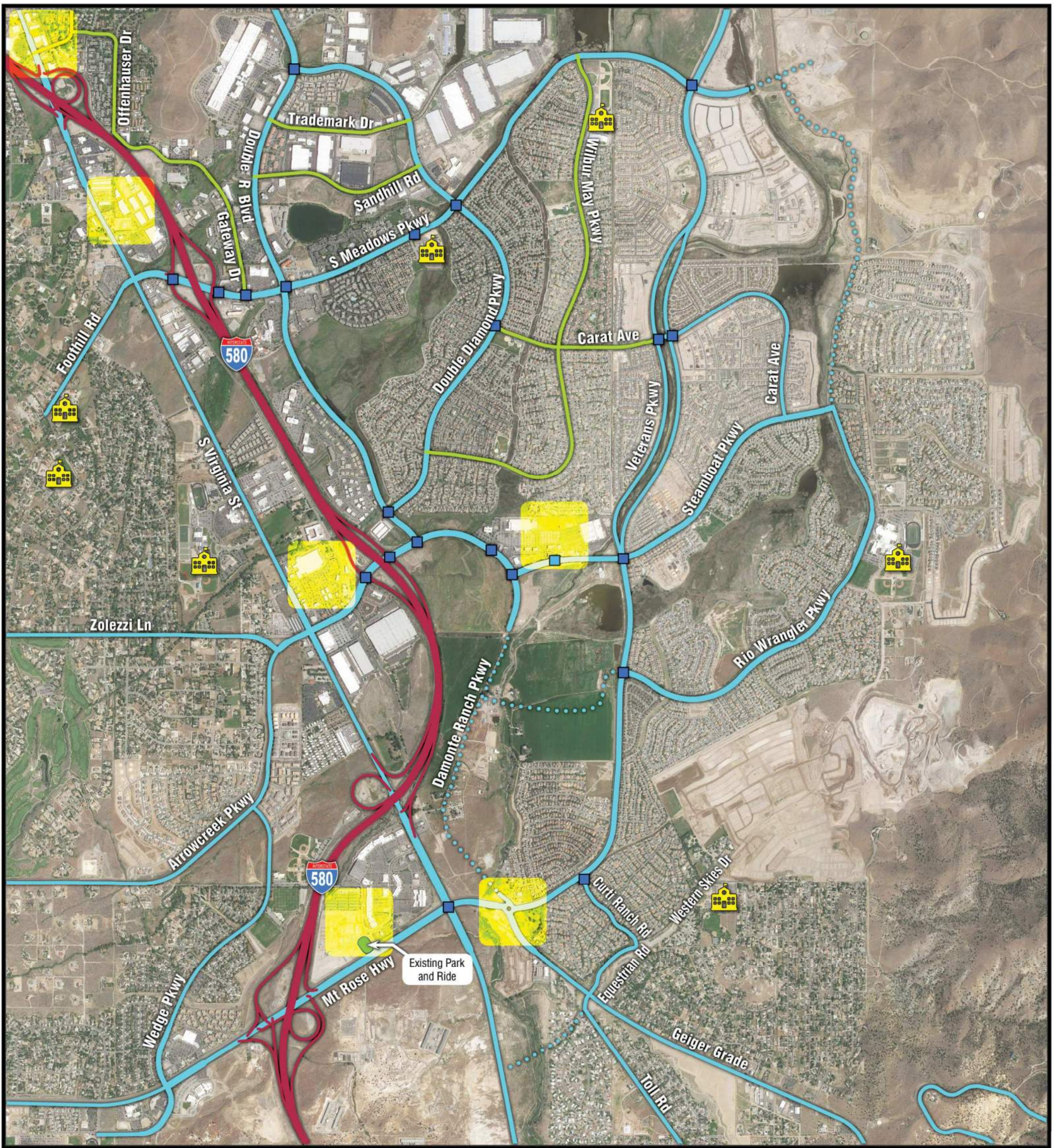
NORTH

Specific Concerns We Have Heard to Date Tell Us Your Thoughts











POTENTIAL DEVELOPMENT AREAS





Legend

-  Freeways and Ramps
 -  Existing Regional Roads
 -  Planned Regional Roads
 -  Local Road (Non-Regional)
 -  Existing Traffic Signal
 -  Conceptual Park and Ride Location
 -  School
- 

NORTH

Where Would YOU Be Most Likely to Use a Park and Ride Lot?



POTENTIAL PARK AND RIDE OPPORTUNITIES

Board
8



Draft Study Goals

- Improve roadway safety for all users
- Plan regional roadway and intersection capacity improvements
- Expand pedestrian and bicycle connectivity
- Enhance public transportation connectivity and travel options



DRAFT STUDY GOALS



Draft Vision Statement

“Create a safe and efficient multimodal transportation system in the South Meadows”



DRAFT VISION STATEMENT





For More Information and to Stay Informed, You Can:

- 1 Visit RTCWashoe.com and Search "South Meadows Study"**
- 2 Add Your Name to the Contact List**
- 3 Follow RTC on Social Media**
   
- 4 Contact the Project Manager**

Xuan Wang
(775) 332-9521
xwang@rtcwashoe.com



KEEP INFORMED

