

## Appendix E Meeting Summaries

E1. Public Meeting #1

E2. SWG-1 Meeting

E3. TAC-1 Meeting

E4. TAC-2 Meeting

E5. SWG-2 Meeting

E6. SWG-3 Meeting

E7. Public Meeting #2 (Pre-Recorded Presentation)

E8. Miscellaneous Comments / Letters

## **Appendix E1 Public Meeting #1**

**Subject** Kickoff Community Meeting/Open House  
**Project** Feasibility Study for Arlington Avenue Bridges Replacement  
**Location** Mckinley Arts and Culture Center  
925 Riverside Dr., Reno  
**Date/Time** December 12, 2019, 5-7 p.m.  
**Presentation** 5:30 p.m. by RTC Project Manager Judy Tortelli

### PROMOTION

- Social media posts on Facebook, Instagram and Twitter
- email notice/invitation (See “Promotion” pdf attachment.)
- Newspaper notice (See “Promotion” pdf attachment.)
- Broadcast interviews with Lauren Ball on KOH radio and KOLO, KRNV and KTVN television
- Press release (December 5) with Reno Gazette Journal coverage

### PREPARATION

- 18 display boards and 100 handouts (welcome letter and comment card) printed and picked up/delivered
- Confirmed availability of tables, chairs and audio/visual with Facilities Manager Mark Sanders
- RTC, Jacobs and SJ Marketing team set-up, 4-5 p.m.

### ATTENDANCE

- 45 attended per 5 sign-in sheets

### MINUTES

- Taken by court reporter Brandi Smith, Litigation Services, and provided as a pdf. (See “Minutes” pdf attachment.)

### TEAR-DOWN

- RTC, Jacobs and SJ Marketing team returned chairs and tables to McKinley storage, packed display boards, 7-7:30 p.m.
- Sign-in sheets and comment cards to SJ Marketing for scanning to archive

## COMMENTS

- Two comments made directly to court reporter Brandi Smith, 19 comment cards completed, 3 comment emails received by Project Manager Judy Tortelli (See “Comments” pdf attachment.)

## COMMENTS TO COURT REPORTER

- Bridge Types to Consider
  - Elevate that bridge high enough so that underneath the bridge becomes very functional: people can comfortably walk under it and events that they're holding in Wingfield Park can have the expansion possibilities without ever crossing the street because they will be under it.
  - My preference, without knowing enough information, is the elevated bridge concept, as it allows pedestrian traffic from the east and west sides of the park under the bridges so that pedestrians don't have to get in their vehicles. I would prefer a design that took all the piers out of the river for an aesthetic reason, also a safety reason for the public, and flooding situations
- Aesthetic Details
  - Because of the bridges' location in Wingfield Park, I would be interested in a more artistic bridge than a utilitarian bridge, as Wingfield Park is home of Artown for a month in the summer. If it's home of Artown, it can have some whimsy.
- Additional Elements in Project Area
  - 50 years from now, our population is going to double. Yet we want to attract people to Downtown. So we must build with that in mind.
  - I would like the eventual design to have some way that it ties into the Virginia Street Bridge, architecturally, visually, and aesthetically.
- Other Needs or Challenges
  - Number one, without exception, we have to have a means of getting emergency vehicles across the river. Meaning ambulances, fire trucks, et cetera. Come off of Arlington, not quite at Court Street, but right there, and come across and be above First Street coming out somewhere around Second Street back to base level. This would create a safety intersection at First Street and Arlington. It would allow, as mentioned, the emergency vehicles to go across.

## COMMENT FORMS COMPLETED AT MEETING

- Bridge Types to Consider
  - Pre-cast and other Acc. bridge construction techniques. Vinduct to bypass the park. Superstructure replacement only.
  - Something more visually pleasing, not cookie-cutter.
  - If flooding isn't a huge issue, a low profile clear span would do just fine.



COMMENT FORMS continued

- Bridge Types to Consider continued
  - Function first. Design to accommodate emergency vehicles first (ambulances, fire trucks). Second, design to meet what will service our rapid growth (50 years from now). Third, design to accommodate growth of special events held in downtown to keep our city core vibrant. Above considered, elevate bridges from Court Street past First, then coming up by Second St. This will set up the basic concept to eventually reposition the amphitheater to accommodate larger crowds as they utilize under the bridge (not new - other cities are using under-freeway interchanges). Then form comes into play - bridge design.
  - No additional types. I particularly love the gracefulness of the tiered arch concept. I really love the Virginia Street Bridge - its grace and spaciousness.
  - A combination of arch, suspension and truss bridge design.
  - Cable, but said to be too costly??? Clear span, something like the Virginia Street Bridge, but a step up in efficiency, would probably be best.
  - Any of the five concepts shown could be incorporated into a beautifully designed bridge. We have the opportunity to build an architecturally significant bridge, surrounded by one of Reno's nicest parks. The Virginia Street Bridge was a major disappointment. One great piece of architecture downtown will create enormous civic pride and have a huge synergistic effect on the immediate area. It happened in Bilbao, Spain, which was more blighted than downtown Reno. For possible concepts or inspiration, please go to: [callatrava.com](http://callatrava.com) or [visitredding.com](http://visitredding.com) and look at Sundial Bridge, which has become a major tourist attraction in North Central California.
  - Possibly one bridge over park.
  - The dirt in middle of elevated bridge should be removed, allowing unfettered pedestrian access to all parts of Wingfield Park and vehicle access from west of Barbara Bennett Park. Wingfield should be one park, *not* divided by bridge.
- Aesthetic Details
  - Art contest to Artown or public to design special structure or barrier rail aesthetics.
  - Artistic, fitting our area and surroundings.
  - Tiled arch, gloss black railing. Similar to current pedestrian bridges.
  - Artistic elements are so important in regards to Artown. Similar railing to Virginia St.
  - I have several friends in the downtown area who use mobility devices. Although beautiful, the cobblestone effect on sidewalks results in a rough and bumpy ride for them. Perhaps a smoother effect could be achieved?
  - Reno is known for its artistic spirit. Incorporate art and lighting to create something unique! Make something unlike anywhere else.
  - More aesthetic hand railing.
  - I like the new Virginia Street Bridge. Something similar.
- Additional Elements in Project Area
  - Additional access to the river, better pedestrian connectivity, suspended pedestrian walkway on main bridge.
  - Upgrading Wingfield Park - amphitheater and art
  - Straighten Arlington Ave. Align bridge spans.

COMMENT FORMS continued

- Additional Elements in Project Area continued
  - Instead of creating a second under-bridge walkway on the south side of the island, expand the width of existing walkway. If the river reaches flood levels, the expanded width would allow for increased flow capacity before traversing onto the island proper. (See drawing “Comments” pdf, page 6.)
  - Concerned about possible construction concurrent with Wingfield Towers.
  - Concerned about location for contractor staging and parking.
  - Opportunity to improve traffic and safety flow by over-spanning Wingfield Park.
  - Pedestrian traffic and effect of tower going in on south bank.
  - Can you possibly re-route all the vehicle traffic and not have any over the bridges?
  - Please consider “bumping out” the sidewalk areas of the longer span (as on the Virginia Street Bridge) so that walkers along Arlington Avenue can stop to watch the kayakers without blocking foot traffic.
  - Solar-powered lights. Illuminated ADA/walking paths.
  - Cost efficiency. Color contrast in structure??? Pedestrian-friendly is a goal.
  - Access to residential property on Island Ave.
- Other Needs or Challenges
  - Bridge removal process - detouring, effect on homeless, possible asbestos.
  - Keeping the flow of pedestrian traffic off Arlington with pedestrian underpasses.
  - Vehicle access to the island. Currently city vehicles, food trucks, emergency vehicles, etc. can pass through barriers off Arlington.
  - Retainment of current pedestrian underpass.
  - Elevated bridge off cul de sac on Island Ave.
  - This bridge floods at 12,000 cubic feet and needs to be done right. It affects flooding west of it.
  - Lifespan. Lack of artistic “Wow” factor.
  - 335 W. First is twentieth century building, built in 1925 and on state and federal historic registers. It was almost destroyed in 1997 flood.
- Other Comments
  - Arched bridge wouldn’t work because excavator would not be able to operate during flood. Raised bridge would ruin profile and split the island during events. If a raised bridge is selected, you will have to create a ramp leading from the street to the island. Not only will the profile cut visual appeal to the island, it will incur additional hardships.
  - Love the project! Can’t wait to see it built.
  - Interested in Stakeholders Committee. Have worked on this area since 1997, attending stakeholders meetings, the River Corridor Committee. (See “Comments” pdf, page 10.)
  - Traffic is not driving at 15 mph speed limit over the south bridge.
  - Please consider Wingfield Park amphitheater redesign when doing this project.
  - The elevated bridge concept ignores the reality of events that take place *on* the bridge and the fact that many events take place on both sides of Wingfield Park.
  - No Pier Bridges!
  - Preferred design: under-deck arch concept. Simple, but provides visual interest. Do not prefer elevated bridge or tiered arch concepts.
  - OK with existing bridges. Who is paying?

COMMENTS EMAILED TO PROJECT MANAGER JUDY TORTELLI

- Bridge Types to Consider
  - Clear span or under arch span. The area is already visually tight and enclosed. Any large above-ground structure, as on Virginia Street's bridge, would impact the view and living space of the park negatively, in my opinion. Ideally, any design that mimics the existing forms would be a people friendly decision, in my opinion.
  - Design should emphasize pedestrian and bike access, be beautiful and provide great views of the river (no column in the middle). This location is primarily for aesthetics and human-powered transportation, so don't allow the needs of cars to take precedence. Form over function.
- Aesthetic Details
  - Tie into the Riverwalk and Wingfield Park/Idlewild Park vibe. Make it a showcase for downtown to support revitalization.
  - Trail/historic/architecture interpretive signs
  - Good lighting
  - Keep a similar low bridge railing profile for aesthetic and area perspective appeal while improving flood capacity. (from area resident who was not able to attend)
- Additional Elements in Project Area
  - The bridge area should have good access to Wingfield Park.
- Other Needs or Challenges
  - I would love to see a road design that came more gradually straight from Court Street down to 1st Street as much as possible. That could eliminate a ped crossing at Island Avenue and would open up more space under a roadway for Wingfield Park and decrease flooding impediments.
  - Choosing same or similar bridge designs for the Center and Lake Street bridges, i.e., repeating a bridge concept, would save time and costs.
  - Hopefully, the Sierra Street Bridge will be replaced sooner than the Arlington bridges. The Sierra Street Bridge's center support collects debris during flooding and is in really bad shape. (from area resident who was not able to attend)



## COMMUNITY MEETING

December 12, 2019 | 5:00pm - 7:00pm | McKinley Arts and Culture Center

# PROMOTION



## **Arlington Avenue Bridges Project**

Community Meeting

Thursday, December 12, 2019 – 5:00 p.m. to 7:00 p.m.

McKinley Arts and Culture Center

925 Riverside Drive

Reno, NV 89503

The Regional Transportation Commission (RTC) of Washoe County is hosting a Community Meeting and Open House to share information, answer questions, and listen to your ideas about the possible replacement of the two Arlington Avenue Bridges in downtown Reno.

The Arlington Avenue Bridges Project is a feasibility study that will analyze possible replacement bridge types and aesthetic themes, document design and environmental criteria, improve safety and multimodal access in the area of Wingfield Park, and review flood-capacity requirements. The project will use a Planning and Environmental Linkage (PEL) process.

- Join us anytime between 5:00 p.m. and 7:00 p.m. The project team will be available to share information, answer questions, and listen to your ideas about the alternatives.
- There will be a brief presentation by the RTC's Project Manager at 5:30 p.m. The presentation will also be livestreamed on RTC's Facebook page, [Facebook.com/rtcwashoe](https://www.facebook.com/rtcwashoe).
- Come and provide your input and get involved in this exciting project.
- See what bridge types and general concepts are being considered.
- Learn about the project's process and schedule.

For more information please visit [rtcwashoe.com](http://rtcwashoe.com) and search Arlington or contact Judy Tortelli, RTC Project Manager, at (775) 335-1824 or [jtortelli@rtcwashoe.com](mailto:jtortelli@rtcwashoe.com).

RTC RIDE Route 16 (Idlewild) serves this location.

For eligible RTC ACCESS reservations call (775) 348-5438. Pursuant to Title II of the Americans with Disabilities Act, special accommodations may be requested by calling (775) 335-1850 at least 48 hours in advance of the meeting.

**Your RTC. Our Community.**







**ABOUT RTC  
WASHOE**

## **PRESS RELEASE: ARLINGTON AVENUE BRIDGES PROJECT COMMUNITY MEETING ON DEC. 12**

**DECEMBER 5, 2019**

The Regional Transportation Commission (RTC) of Washoe County is beginning the process of replacing the Arlington Avenue Bridges over the Truckee River and is looking for input from the community.

The RTC invites everyone to a community meeting on Thursday, December 12 from 5-7 p.m. at the McKinley Arts & Culture Center, located at 925 Riverside Drive in Reno. There will be a presentation at 5:30 p.m. and staff will be available to answer questions. The McKinley Arts & Culture Center is served by [RTC Transit Route 16](#).

If you can't attend the meeting, the RTC plans to livestream it on [RTC's Facebook page](#), so you can still get involved and share your comments and ideas.

This project is a feasibility study that will analyze possible replacement bridge types and aesthetic themes, document design and environmental criteria, improve safety and multimodal access in the area of Wingfield Park, and review flood-capacity requirements.

The current bridges over the Truckee River on Arlington Avenue were built in the 1930s. While they are still structurally safe to drive over, they are starting to show their age and it is time for the RTC to begin the process of replacing them.

The study will consist of a multi-step public process, including a public-kickoff meeting, and a stakeholder working group that will involve about 20 regional participants. The RTC will work together with regional stakeholders and the public through the feasibility study process. Construction is anticipated to start in 2026.

*The McKinley Arts & Culture Center is accessible to individuals with disabilities. Requests for auxiliary aids to assist individuals with disabilities should be made with as much advance notice as possible. For those requiring hearing or speech assistance, contact Relay Nevada at 1.800.326.6868 (TTY, VCO or HCO). Requests for supporting documents and all other requests should be directed to RTC Metropolitan Planning at 775-348-0480. Supporting documents may also be found on the [RTC website](#).*



# Arlington Avenue Bridges Project Open House/Community Meeting

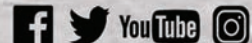
Thursday, December 12, 2019 • 5-7 p.m. (Presentation at 5:30 PM)  
McKinley Arts & Culture Center, 925 Riverside Dr., Reno  
Served by RTC Transit Route 16

The RTC of Washoe County is beginning a feasibility study for the Arlington Avenue Bridges and is seeking for input from the community. This project will analyze possible replacement bridge types and aesthetic themes, document design and environmental criteria, improve safety and multimodal access in the area of Wingfield Park, and review flood-capacity requirements.

If you are unable to attend, the RTC plans to livestream the presentation on its Facebook page.

*The McKinley Arts & Culture Center is accessible to individuals with disabilities. Requests for auxiliary aids to assist individuals with disabilities should be made with as much advance notice as possible. For those requiring hearing or speech assistance, contact Relay Nevada at 1.800.326.6868 (TTY, VCO or HCO). Requests for supporting documents and all other requests should be directed to RTC Engineering Department at (775) 348-0171 ext 0. Supporting documents may also be found on the [rtcwashoe.com](http://rtcwashoe.com).*

Your RTC. Our Community.  
[rtcwashoe.com](http://rtcwashoe.com)





December 12, 2019

WELCOME!

Thank you for attending the Open House for the RTC's **Arlington Avenue Bridges Project**. The Regional Transportation Commission of Washoe County (RTC) is conducting tonight's meeting in an open house format with the project team available to share information, answer questions, and listen to your ideas about the possible replacement of the two Arlington Avenue Bridges in downtown Reno.

The Arlington Avenue Bridges Project is a feasibility study that will analyze possible replacement bridge types and aesthetic themes, document design and environmental criteria, improve safety and multimodal access in the area of Wingfield Park, and review flood-capacity requirements. The project will use a Planning and Environmental Linkage (PEL) process.

Tonight's meeting is from 5 to 7 p.m. with a brief presentation by the project manager at 5:30 p.m. As you enter the room, you will notice displays describing the project including possible conceptual alternatives and improvements for consideration. Project representatives (wearing nametags) are located near the displays. Please take this opportunity to discuss the project with them; ask questions; and share your ideas, comments, and concerns.

#### **Ways to Comment**

We want your input! During this meeting and through the end of the feasibility study (December 2020), your comments are welcome and encouraged on topics related to this project. You may submit your comments and any supporting exhibits for the public record in the following ways:

- Fill out a comment form during tonight's meeting and leave it with a project representative or drop it in the comment box.
- Submit a comment with the court reporter.
- Email your comments or comment form to Judy Tortelli, RTC Project Manager at [jtortelli@rtcwashoe.com](mailto:jtortelli@rtcwashoe.com)
- Write a letter or mail in your completed comment form and any associated exhibits to:  
Judy Tortelli, RTC Project Manager  
1105 Terminal Way Suite 108, Reno, Nevada 89502.
- To learn more about the project go to [rtcwashoe.com](http://rtcwashoe.com) and search Arlington.

Thank you for attending this open house and for your interest in the project. Visit [rtcwashoe.com](http://rtcwashoe.com) for more information. Please let us know if you would like your name and contact information added to the study mailing list to receive updates and future meeting notices.

Sincerely,

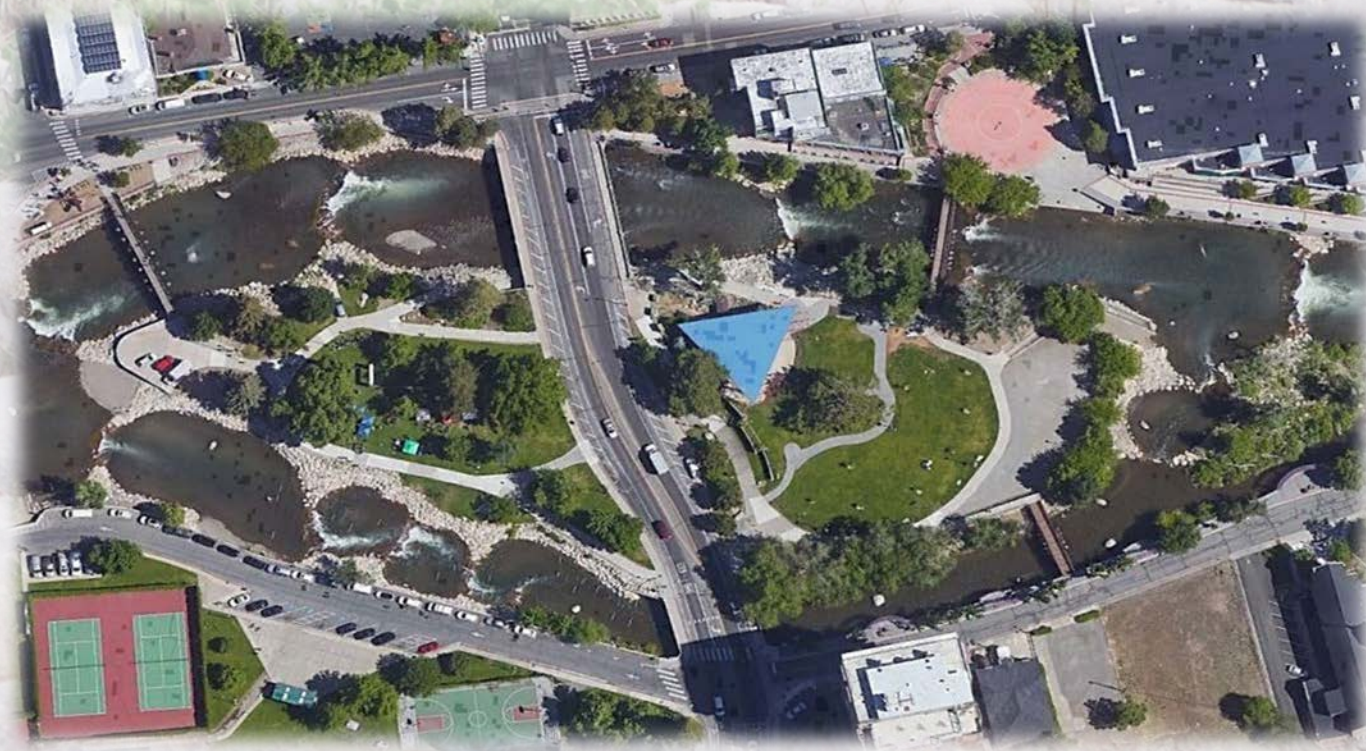
Amy Cummings, AICP, LEED AP  
RTC Interim Executive Director  
[rtcwashoe.com](http://rtcwashoe.com)

**Your RTC. Our Community.**



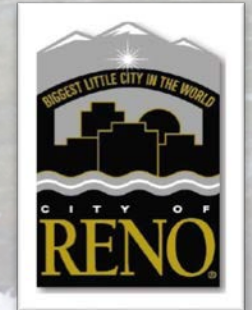


# Feasibility Study for



# ARLINGTON AVENUE BRIDGES REPLACEMENT

Public Open House | December 12, 2019





# Purpose of Tonight's Meeting

- ✓ Learn About the Project
- ✓ Receive your input on the Project purpose and need, evaluation criteria, and the range of alternatives
- ✓ Present the Project process and provide opportunities for public input
- ✓ Share Ideas and Suggestions

Visit the boards located around the room and provide your input to the Project Team!

# Purpose and Need

- ▶ Address Structurally Deficient Bridges
- ▶ Provide Safe and ADA compliant Multimodal improvements
- ▶ Address hydraulic capacity needs
- ▶ Respond to regional and community plans

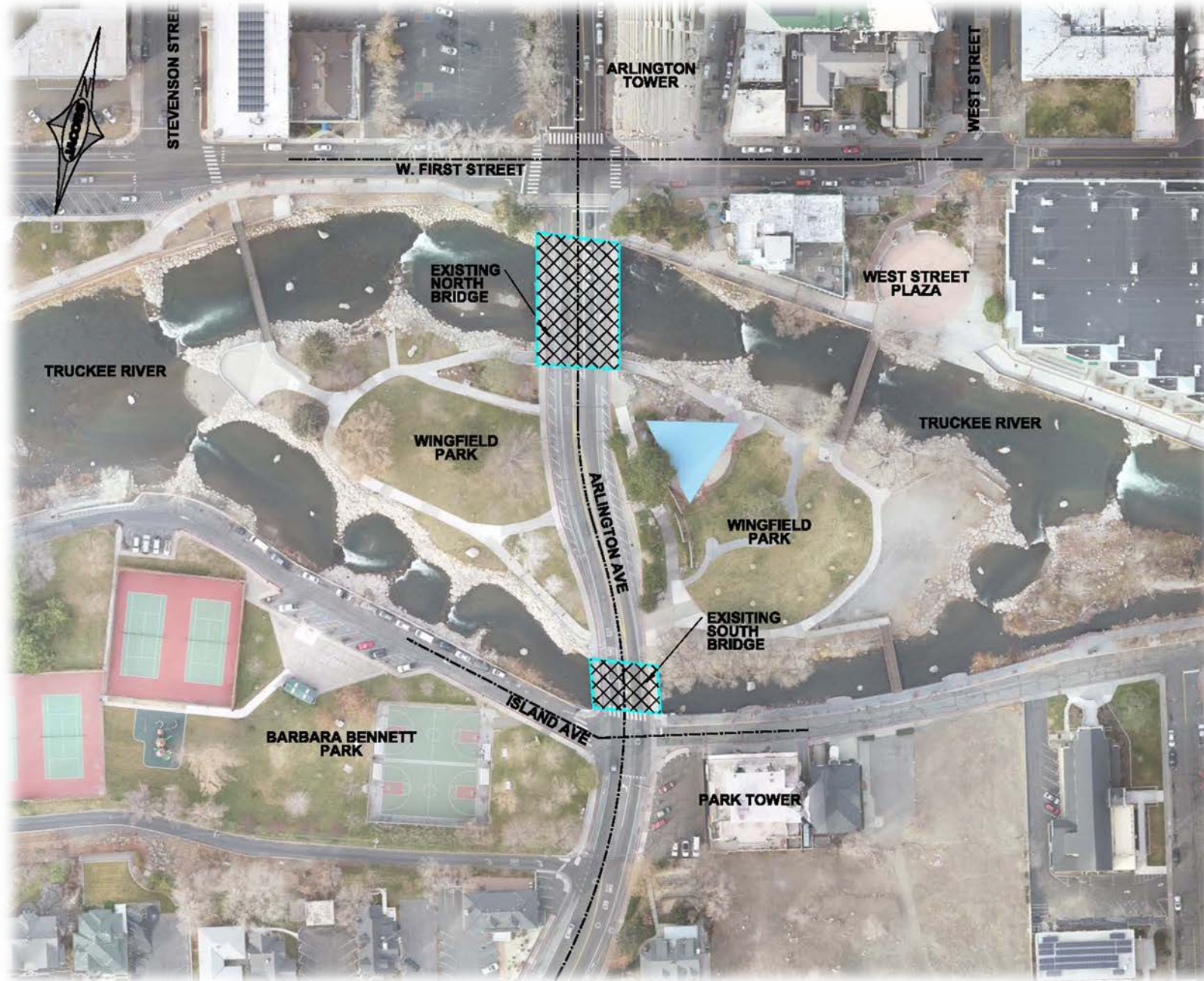


# Scope

- ▶ Complete a feasibility study to define possible bridge options, constraints, and costs
- ▶ Goal - Evaluate a range of possible bridge and aesthetic options
- ▶ Outcome - have a bridge and aesthetic package identified to carry forward into environmental clearance and design
  - ▶ Document decisions using a process called Planning and Environmental Linkages (PEL)

Your input and comment during this study will be used to support a future environmental analysis for the National Environmental Policy Act (NEPA).





# Past Efforts

## City of Reno “TRAction Visioning Project” (2009)

- ▶ Considered the “Look and Feel” of six downtown bridges, including Arlington Avenue
- ▶ Study included public meetings and stakeholder outreach
- ▶ Community’s input shifted focus to appearance of the bridges balanced against an acceptable level of flood protection
- ▶ Outcomes included:
  - ▶ Flood protection alternatives other than replacement bridges eliminated
  - ▶ Bridge supports located under the deck are preferred

### Eliminated Alternatives

- Upstream detention
- Diversion channels
- Dredging
- River Widening
- Debris fields

# Our Process

- ▶ Build Upon the TRAction Report
- ▶ Receive public, stakeholder, and technical input to:
  - ▶ Develop design standards / evaluation criteria
  - ▶ Develop and review bridge and aesthetic alternatives
  - ▶ Make a recommendation and receive input from the RTC Board and Reno City Council
- ▶ Identify Environmental Constraints
- ▶ At a future Public Meeting, get input to refine project alternatives



# Sample Criteria

Possible criteria to select a bridge type:



Transportation/Multi-modal uses



Visual and Physical Impacts



Style and Scale



Recreational and Access Impacts



Environmental Impacts



Potential Project Cost



Constructability and Construction Schedule

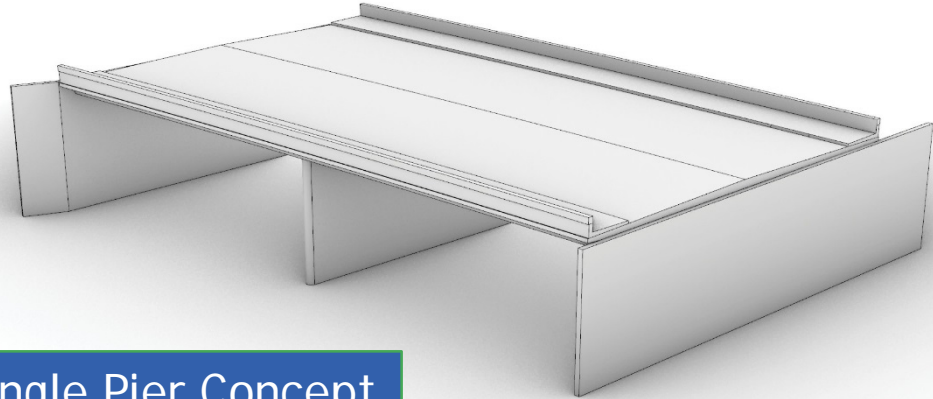


We want to hear from you!

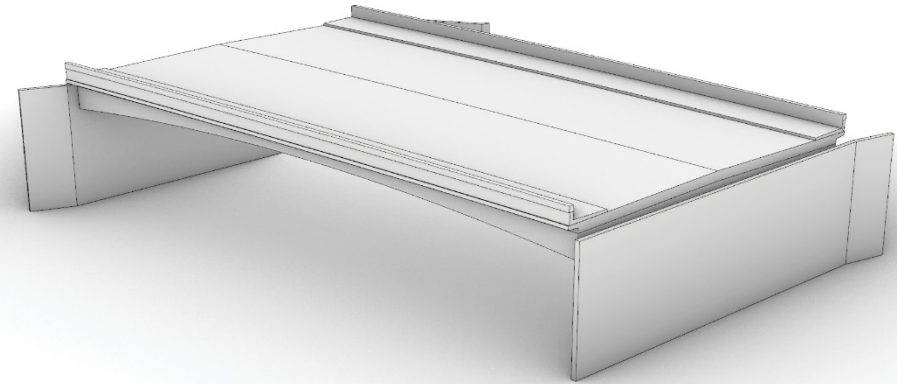




# Range of Alternatives



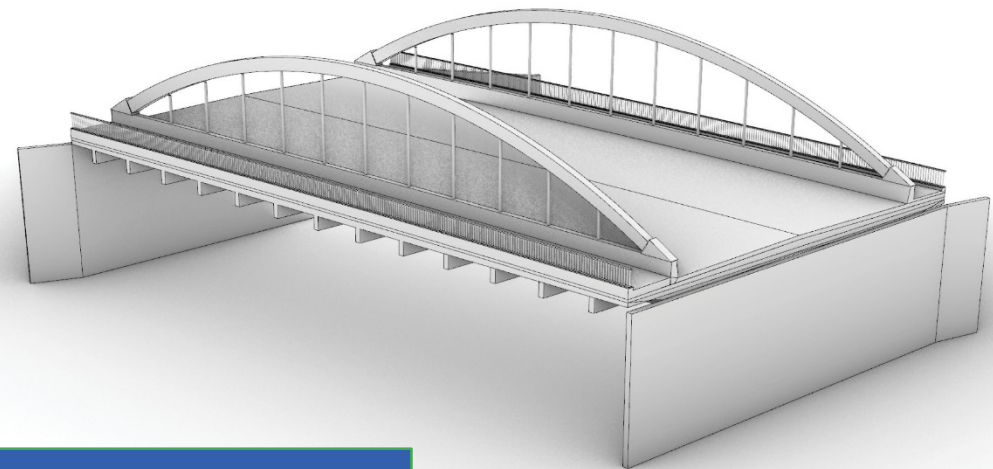
Single Pier Concept



Clear Span Concept

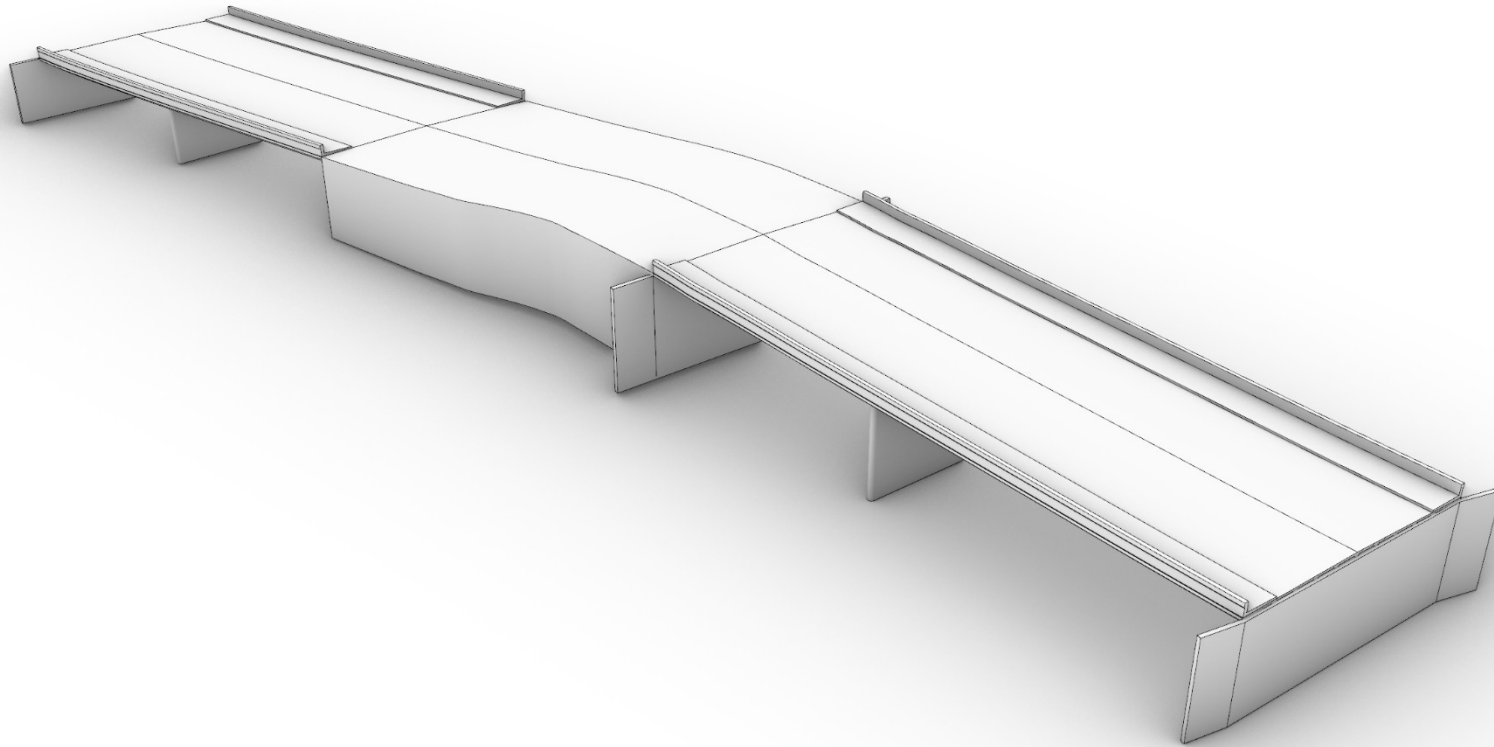


Underdeck Arch Concept



Tied Arch Concept

# Range of Alternatives



Elevated Bridge Concept

# OVERALL PROJECT PLAN



	2019	2020	2021-2025	2026
Public Kickoff	*			
Identify and Analyze Bridge and Aesthetic Concepts	■			
Public Meeting		*		
Complete Feasibility Study		■		
Environmental (NEPA)			■	
Design/Permitting			■	
Construction Start				*

# How to Submit a Comment

- Submit a comment sheet at the greeting table
- Complete a Comment Sheet and mail it to:  
Judy Tortelli  
RTC Project Manager  
1105 Terminal Way, Suite 108  
Reno, Nevada 89502
- Make a comment to the Court Reporter
- Email: [jtortelli@rtcwashoe.com](mailto:jtortelli@rtcwashoe.com)  
reference "Arlington Avenue Bridges"  
in the subject line



**YOUR COMMENTS**

RTC

ARLINGTON AVENUE BRIDGES PROJECT

JACOBS

December 12, 2019 | 5:00pm - 7:00pm | McKinley Arts and Culture Center  
Please complete this form. Leave it on your way out or mail it to the address below. Thank you.

Date: \_\_\_\_\_ Name: \_\_\_\_\_  
Address: \_\_\_\_\_ Phone: \_\_\_\_\_  
Email: \_\_\_\_\_

- Are there additional bridge types we should consider?  
\_\_\_\_\_  
\_\_\_\_\_
- What types of aesthetic details (railing, lighting, materials, landscaping) are important to you?  
\_\_\_\_\_  
\_\_\_\_\_
- Are there additional elements in the project area that we should consider?  
\_\_\_\_\_  
\_\_\_\_\_
- Do you know of any other needs or challenges related to the existing bridges?  
\_\_\_\_\_  
\_\_\_\_\_
- Other comments?  
\_\_\_\_\_  
\_\_\_\_\_

Your RTC. Our Community.  
rtcwashoe.com

1105 Terminal Way, Suite 211, Reno, NV 89502 | Attn: Judy Tortelli

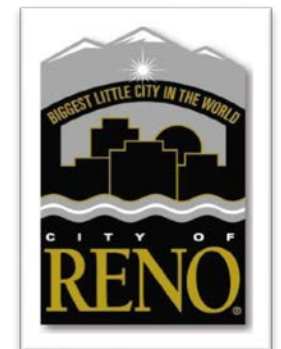
# Thank you for Attending!



Your RTC. Our Community.  
[rtcwashoe.com](http://rtcwashoe.com)



**JACOBS**

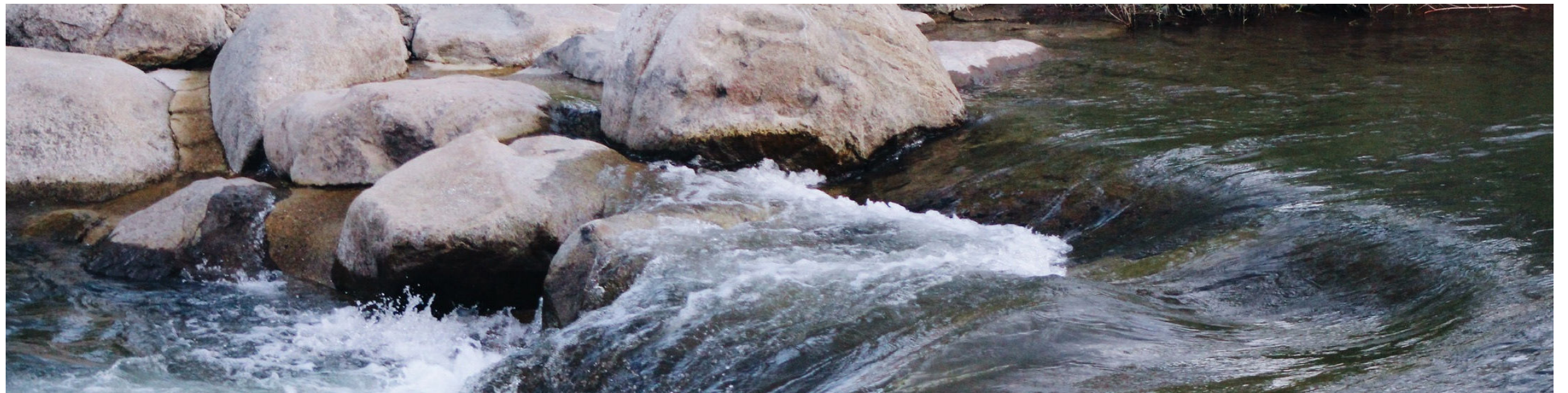




# COMMUNITY MEETING

## WELCOME

- Please sign in here.
- Thank you for coming.





## SCOPE OF THE STUDY

- Conduct a feasibility study to define possible bridge options, constraints and costs for the potential replacement of the two Arlington Avenue bridges in downtown Reno
- Goal: evaluate a range of possible bridge type and aesthetic options through
  - engineering and environmental analysis
  - public outreach
- Outcome: select a bridge and aesthetic package to carry forward into environmental clearance and design
- Complete NDOT | FHWA Planning and Environmental Linkages (PEL) checklist
- Investigate possible funding sources

*Your input and comments during this study will be used to support a future environmental analysis for the National Environmental Policy Act (NEPA).*



## PROJECT APPROACH



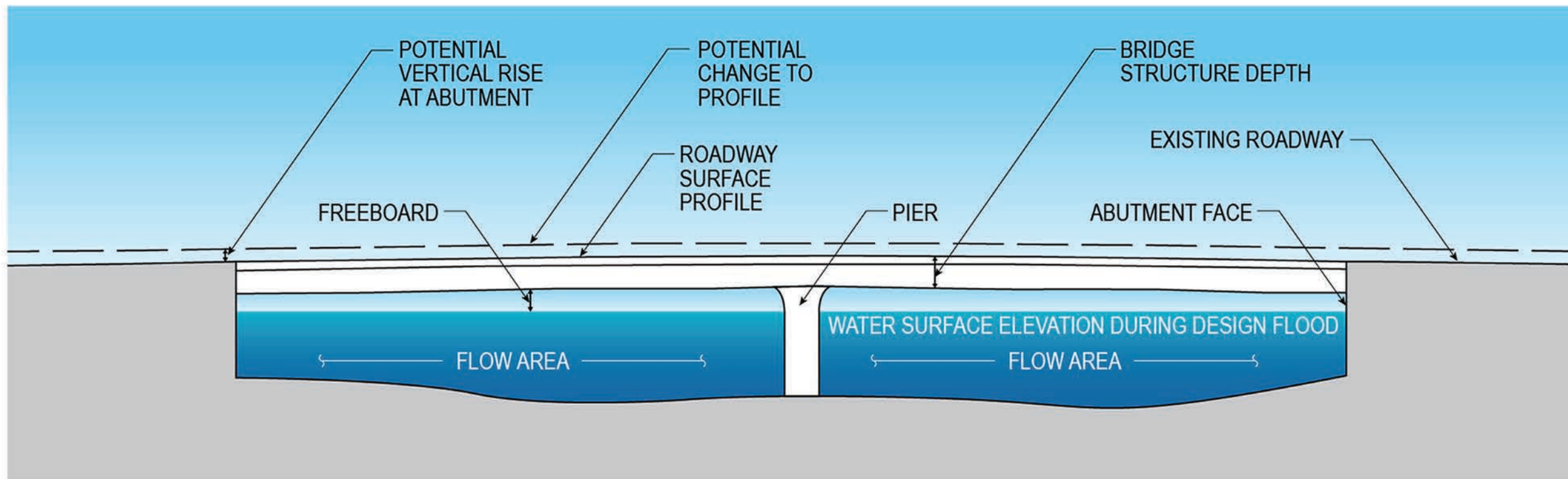


# PROJECT AREA





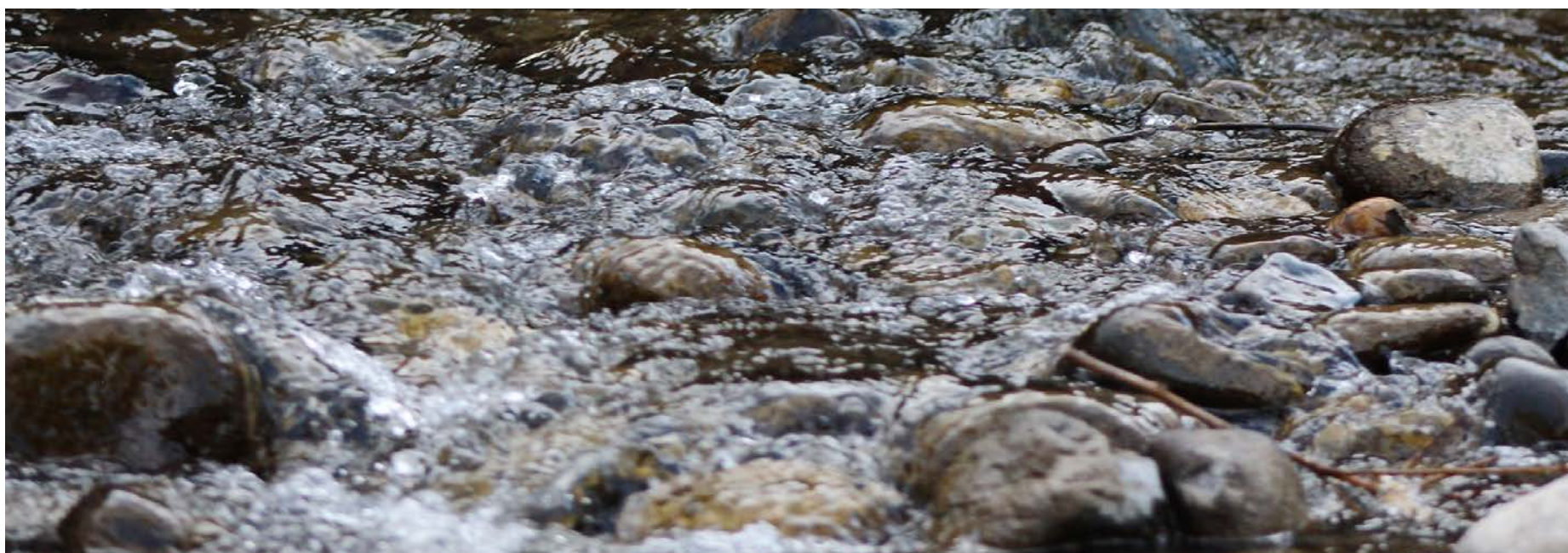
## TERMINOLOGY





## PREVIOUS BRIDGE VISIONING

- TRAction study completed in spring 2009
- Extensive public | stakeholder involvement
- Considered:
  - initially, “look and feel” of six downtown bridges
  - shift in focus to determining flood protection levels (100-yr + 2-ft freeboard)
- Outcomes:
  - flood protection alternatives other than bridge replacement were eliminated
  - bridges supported from beneath the deck were preferred





## PURPOSE AND NEED

- Address structurally deficient bridges
- Provide safe and ADA compliant multi-modal improvements
  - pedestrian, bicycle, transit and vehicle access
- Address hydraulic capacity needs of the Truckee River
- Respond to regional and community plans





## PROPOSED EVALUATION CRITERIA

*Your input on these or other criteria will help determine how we achieve the goal.*

- Transportation | multimodal use
- Impacts to surrounding properties | infrastructure | river
  - visual, related to size and scale
  - physical project limits
  - hydraulic capacity
- Style elements and how the concept fits with existing or planned improvements
- Recreational and access impacts
  - for activities on Wingfield Park and in the Truckee River
- Environmental impacts to sensitive resources
- Potential project cost
- Constructability and construction schedule



## ENVIRONMENTAL RESOURCES

To be evaluated:

- land use
- historic resources (Section 106)
- parks and recreational resources - Sections 4(f) and 6(f)
- bicycle and pedestrian uses
- wetlands | biological
- hazardous materials

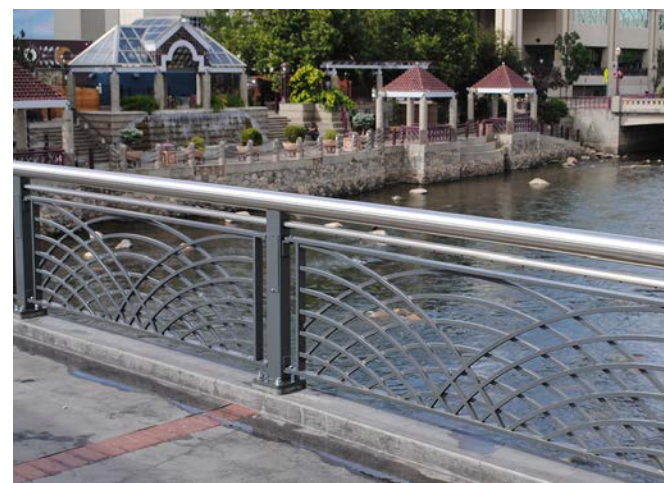
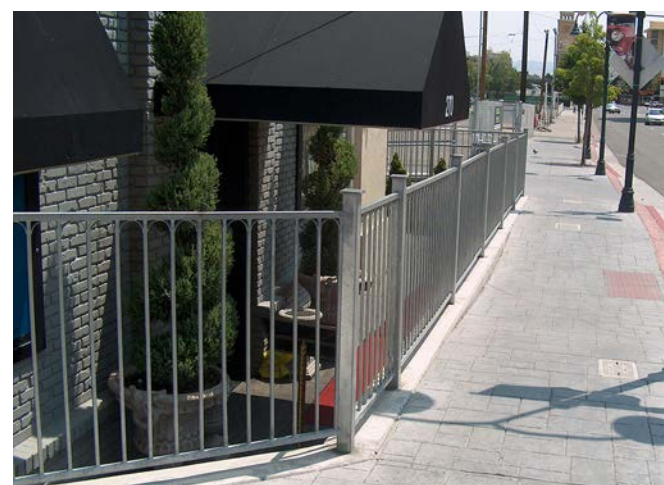




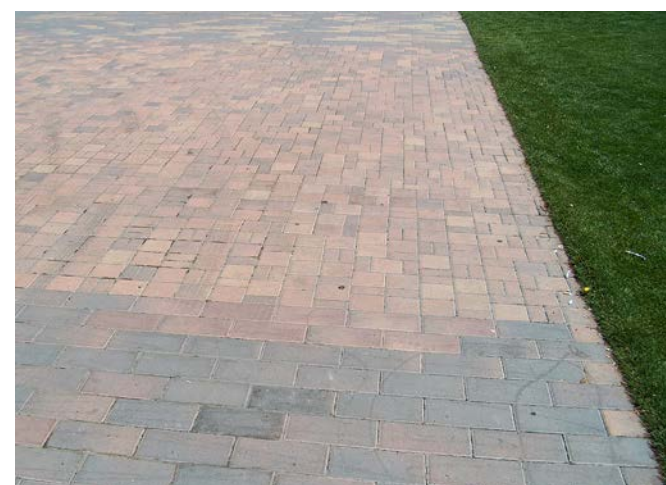
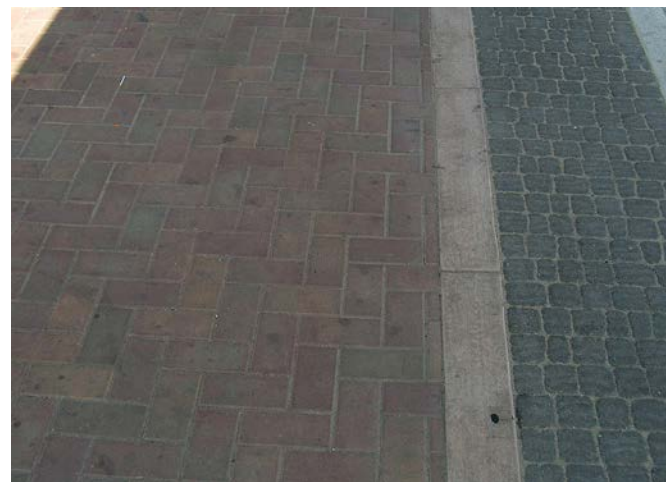
## PROJECT DETAILS

*Elements like these will be considered after a bridge type is selected. Your input on generic type and style is encouraged.*

Bridge Railings



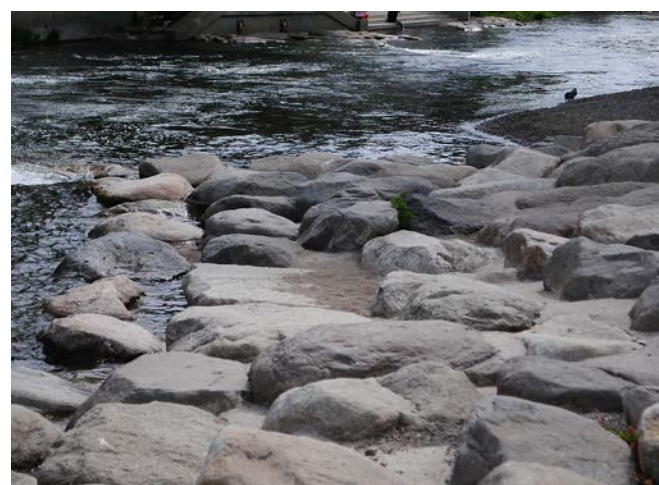
Sidewalks



Light Poles



Landscaping



Public Art



Street Furniture










*Detail elements  
subject to  
funding  
eligibility.*



# FEASIBILITY STUDY

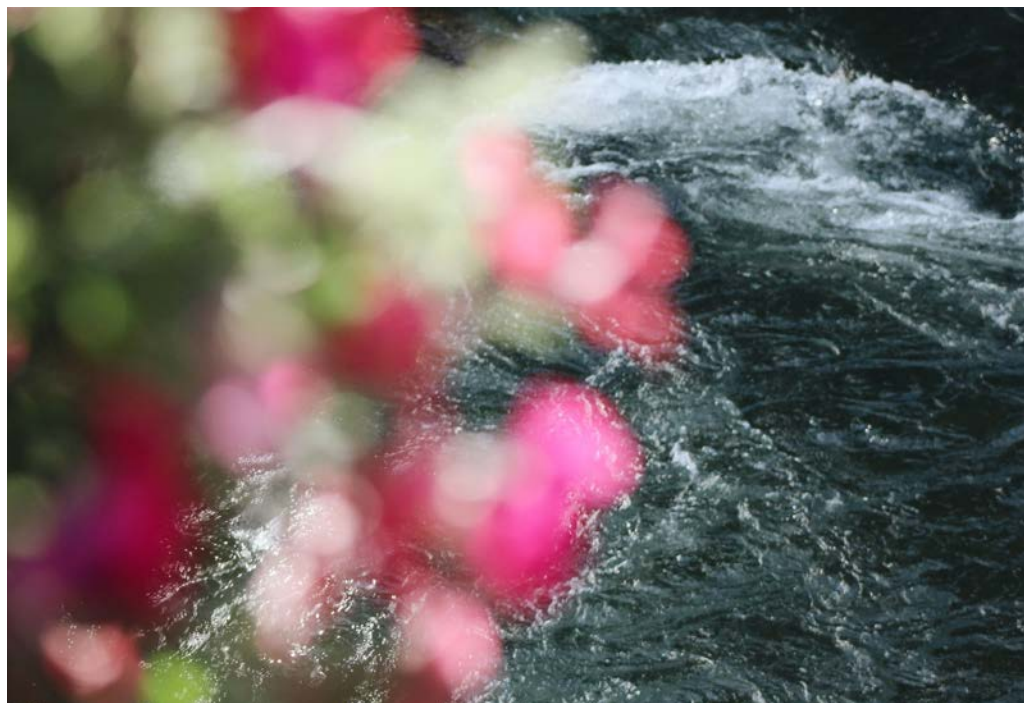
## PROJECT SCHEDULE

	2019	2020	2021-2025	2026
Public Kickoff Meeting				
Identify and Analyze Bridge and Aesthetic Concepts				
Public Meeting				
Complete Feasibility Study				
Environmental (NEPA)				
Design   Permitting				
Construction Start				



## NEXT STEPS

- Collect environmental data
- Analyze conceptual bridge types
- Develop aesthetic concepts
- Present options to stakeholders and the public



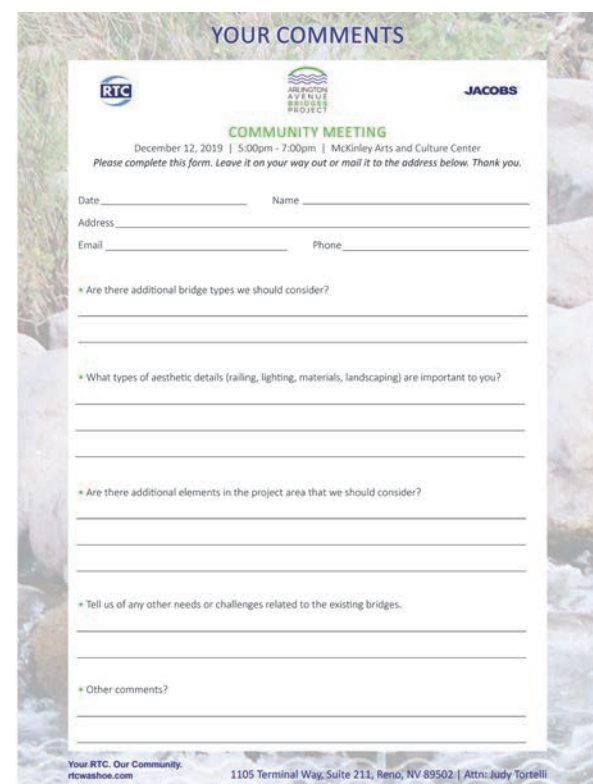


## HOW TO PARTICIPATE

- Complete a comment form and leave it on your way out
- Leave a comment with our court reporter
- Contact RTC Project Manager Judy Tortelli
  - email: [jtortelli@rtcwashoe.com](mailto:jtortelli@rtcwashoe.com)
  - phone: 775.335.1824
- Visit **[rtcwashoe.com](http://rtcwashoe.com)** and search Arlington Avenue for more information



**Your RTC. Our Community.**  
REGIONAL TRANSPORTATION COMMISSION



Thank you for participating!



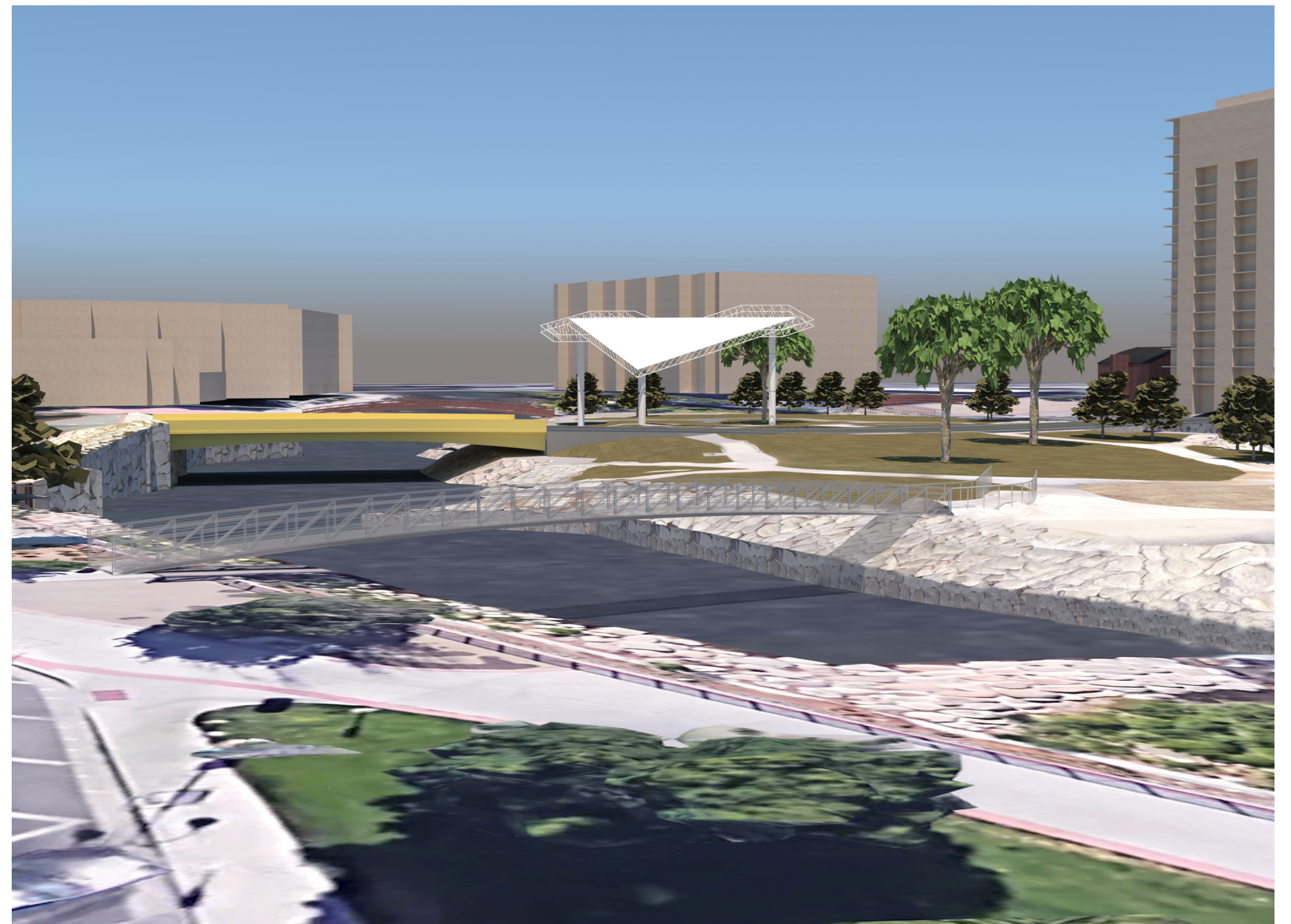
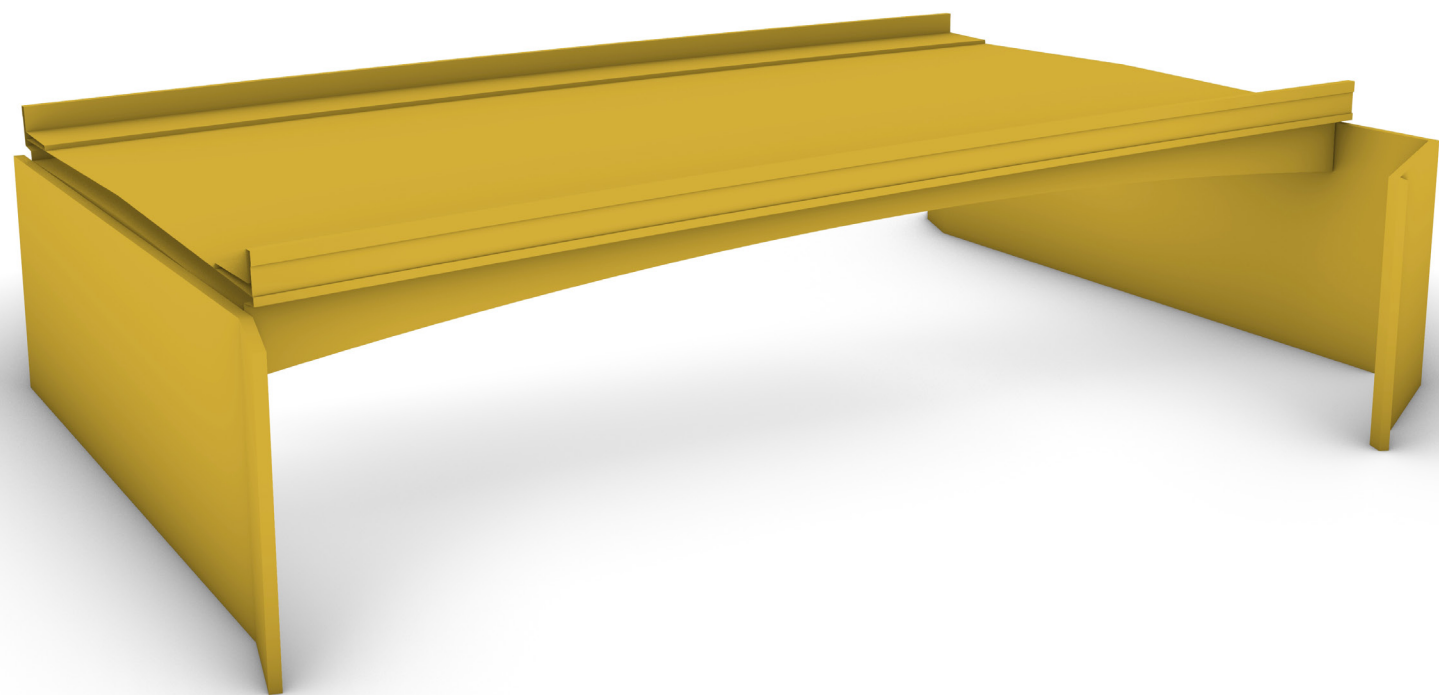
## SINGLE PIER CONCEPT



*Please note: trees have been removed for clarity.*



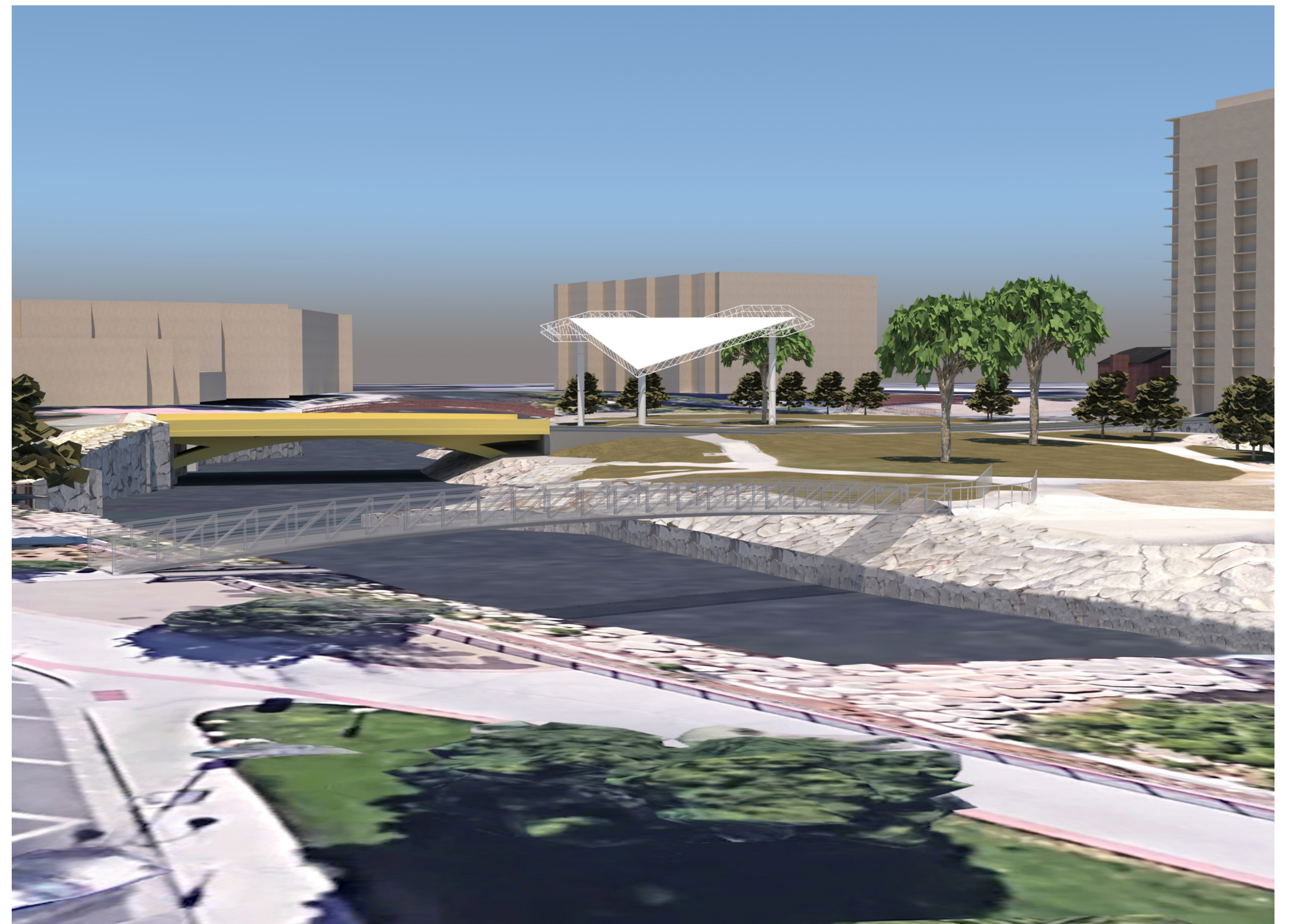
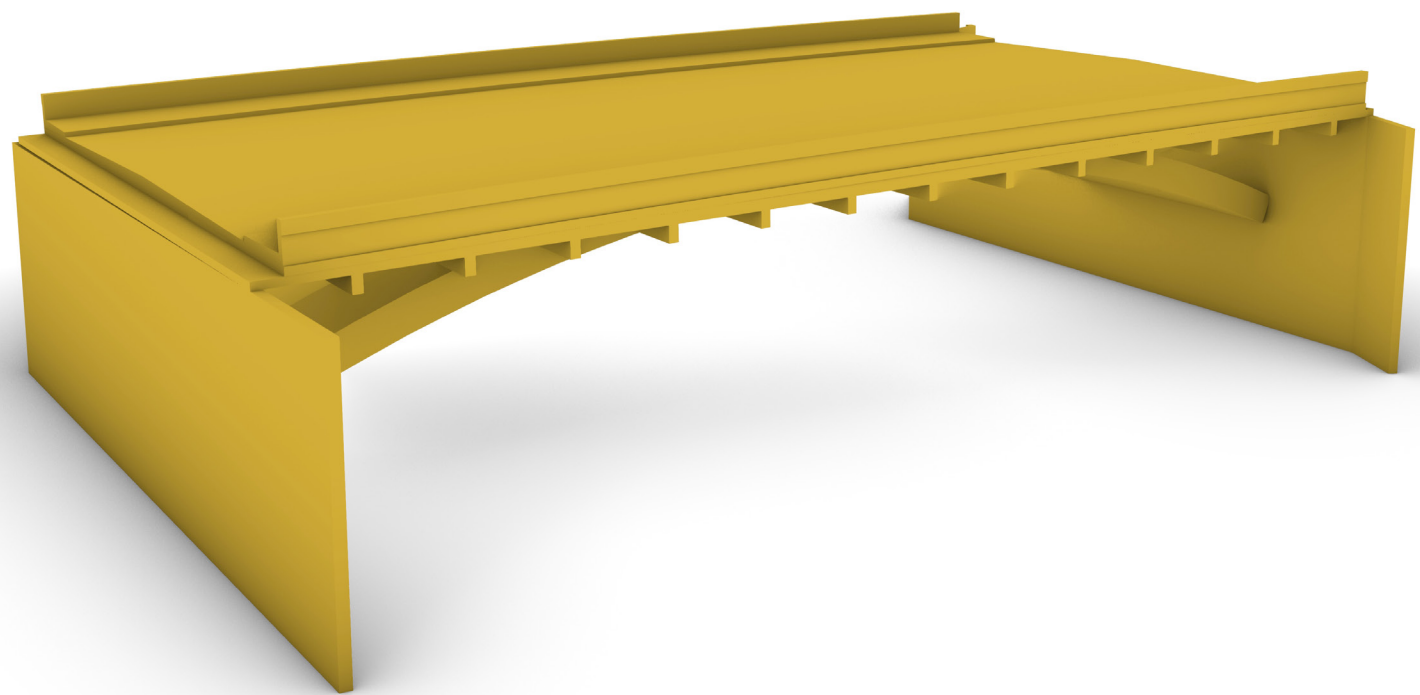
## CLEAR SPAN CONCEPT



*Please note: trees have been removed for clarity.*



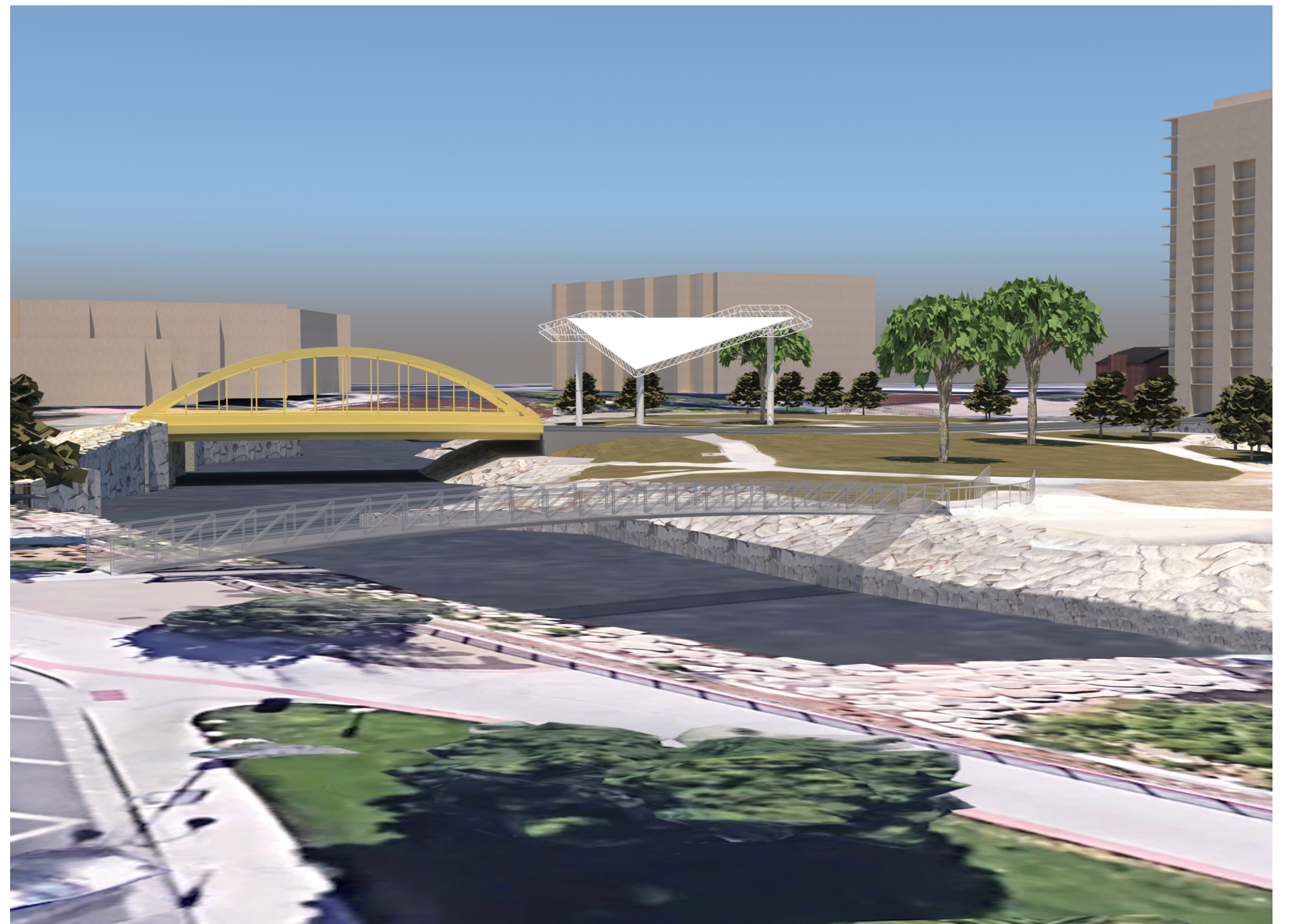
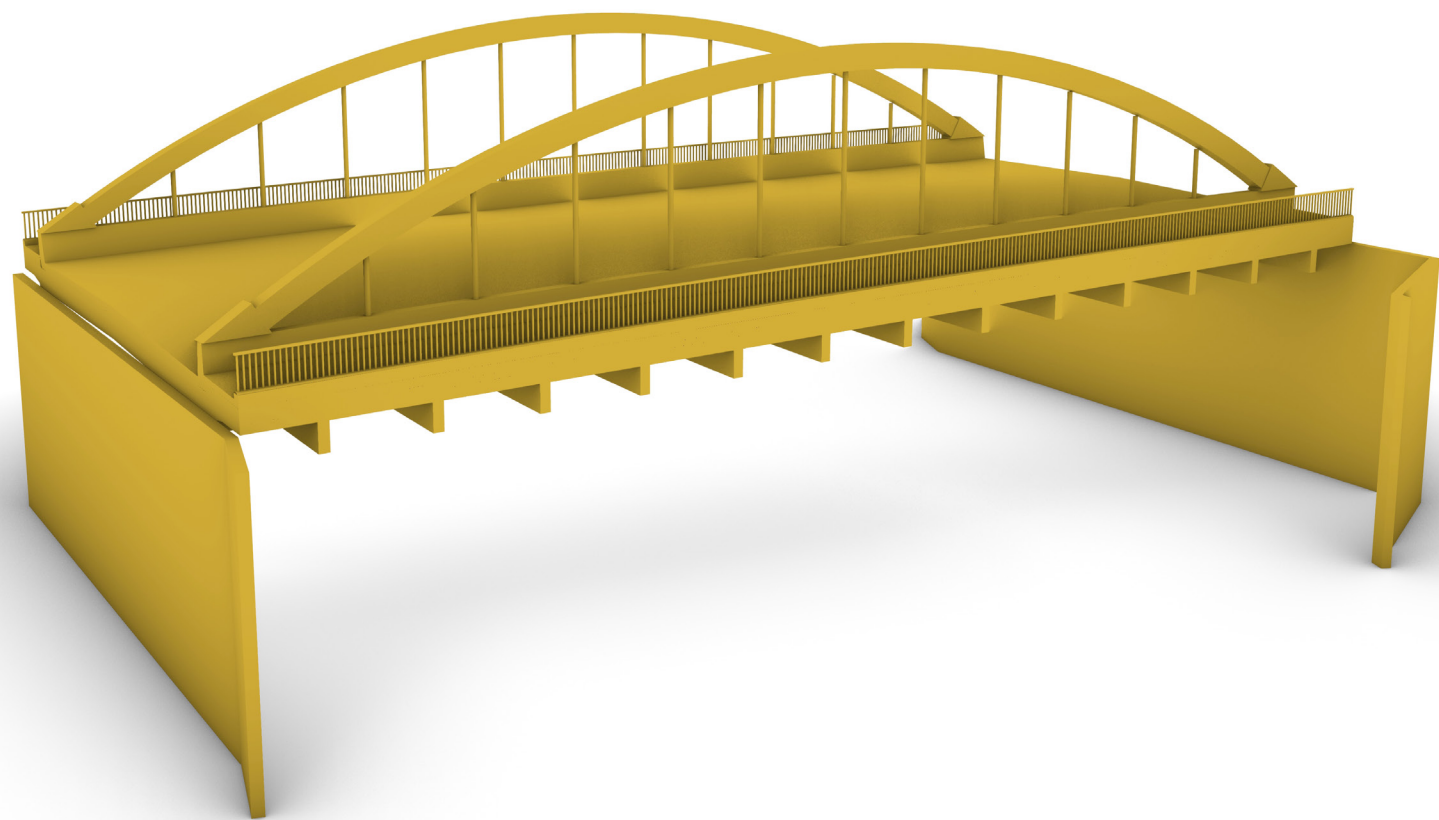
## UNDERDECK ARCH CONCEPT



*Please note: trees have been removed for clarity.*



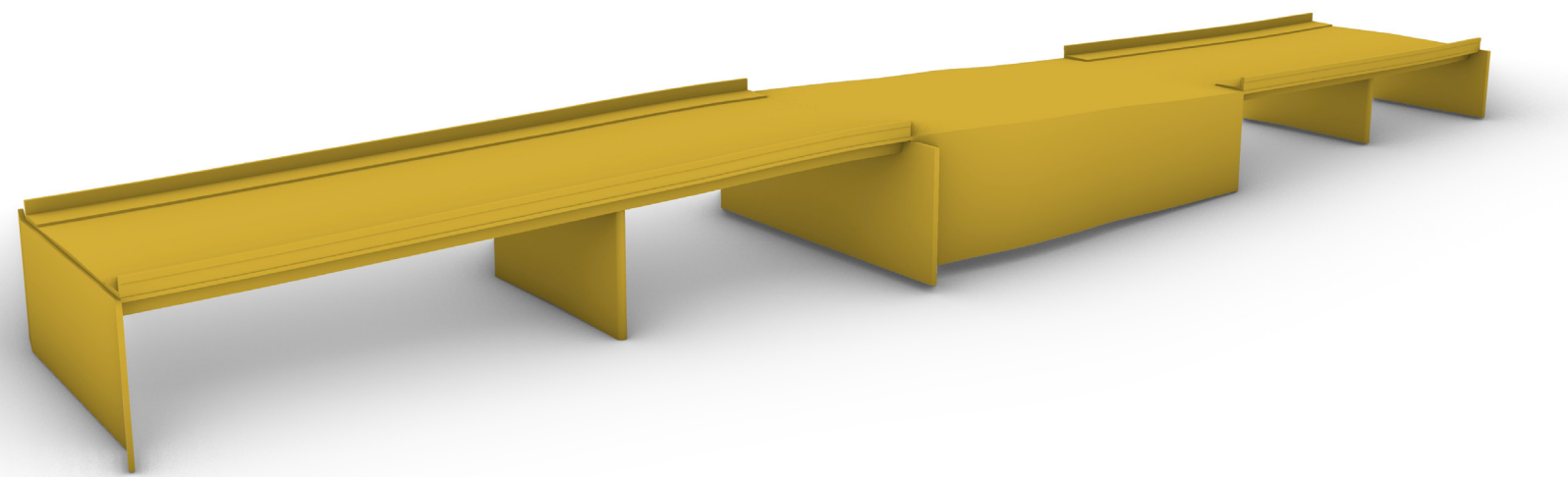
## TIED ARCH CONCEPT



*Please note: trees have been removed for clarity.*



## ELEVATED BRIDGE CONCEPT



*Please note: trees have been removed for clarity.*



Public Comment Matrix  
 Kickoff Community Meeting/Open House  
 December 12, 2019

Comment Category	Sub-Category	Comment Description
Bridge Type	Elevated Bridge	1) Elevate high enough so that underneath the bridge becomes very functional 2) My preference, without knowing enough information, is the elevated bridge concept 3) Elevate bridges from Court Street past First, then coming up by Second St. to set up the basic concept to reposition the amphitheater to accommodate larger crowds as they utilize under the bridge 4) Possibly one bridge over park 5) The dirt in middle of elevated bridge should be removed, allowing unfettered pedestrian access to all parts of Wingfield Park and vehicle access from west of Barbara Bennett Park 6) Wingfield should be one park, not divided by bridge 7) Raised bridge would ruin profile and split the island during events 8) If a raised bridge is selected, you will have to create a ramp leading from the street to the island - not only will the profile cut visual appeal to the island, it will incur additional hardships 9) Elevated bridge concept ignores the reality of events that take place on the bridge and the fact that many events take place on both sides of Wingfield Park 10) Do not prefer elevated bridge or tiered arch concepts
	Clear Span	1) I would prefer a design that took all the piers out of the river 2) If flooding isn't a huge issue, a low-profile clear span would do just fine 3) I particularly love the gracefulness of the tiered arch concept

Public Comment Matrix  
 Kickoff Community Meeting/Open House  
 December 12, 2019

Comment Category	Sub-Category	Comment Description
		4) Clear span or under arch span - area is visually tight and any large above-ground structure would impact the view and living space of the park negatively 5) Any design that mimics the existing forms would be a people friendly decision
	Other	1) Pre-cast and other bridge construction techniques, bypass the park, superstructure replacement only 2) Something more visually pleasing, not cookie-cutter 3) Function first 4) A combination of arch, suspension and truss bridge design 5) Cable, but said to be too costly - clear span, something like the Virginia Street Bridge 6) Any of the five concepts shown could be incorporated into a beautifully designed bridge 7) We have the opportunity to build an architecturally significant bridge, surrounded by one of Reno's nicest parks 8) The Virginia Street Bridge was a major disappointment 9) For inspiration, please go to: <a href="http://callatrava.com">callatrava.com</a> or <a href="http://visitredding.com">visitredding.com</a> and look at Sundial Bridge 10) Arched bridge wouldn't work because excavator would not be able to operate during flood 11) No Pier Bridges 12) Preferred design: under-deck arch concept - simple, but provides visual interest

Public Comment Matrix  
 Kickoff Community Meeting/Open House  
 December 12, 2019

Comment Category	Sub-Category	Comment Description
Aesthetic Details		1) I would be interested in a more artistic bridge than a utilitarian bridge 2) As Wingfield Park is home of Artown for a month in the summer, it can have some whimsy 3) Art contest to Artown or public to design special structure or barrier rail aesthetics 4) Artistic, fitting our area and surroundings 5) Tiled arch, gloss black railing - similar to current pedestrian bridges 6) Artistic elements are important to Artown - similar railing to Virginia St. 7) The cobblestone effect on sidewalks results in a rough and bumpy ride for mobility devices 8) Incorporate art and lighting to create something unique - make something unlike anywhere else 9) More aesthetic hand railing 10) I like the new Virginia Street Bridge - something similar 11) Tie into the Riverwalk and Wingfield Park/Idlewild Park vibe - make it a showcase for downtown to support revitalization 12) Trail/historic/architecture interpretive signs 13) Good lighting 14) Keep a similar low bridge railing profile for aesthetic and area perspective appeal while improving flood capacity
Other	Additional Elements	1) Our population is going to double...we want to attract people to Downtown...we must build with that in mind 2) Expand the width of existing walkway



Public Comment Matrix  
 Kickoff Community Meeting/Open House  
 December 12, 2019

Comment Category	Sub-Category	Comment Description
		3) Concerned about construction concurrent with Wingfield Towers, location for contractor staging and parking 4) Opportunity to improve traffic and safety flow by over-spanning Wingfield Park 5) Pedestrian traffic and effect of tower going in on south bank 6) Can you re-route all the vehicle traffic and not have any over the bridges 7) Consider "bumping out" the sidewalk areas of the longer span so walkers can stop to watch kayakers without blocking foot traffic 8) Solar-powered lights, illuminated ADA/walking path 9) Cost efficiency 10) Color contrast in structure 11) Pedestrian-friendly is a goal 12) Access to residential property on Island Ave. 13) The bridge area should have good access to Wingfield Park
	Needs or Challenges	1) We have to have a means of getting emergency vehicles across the river 2) Design to accommodate emergency vehicles first 3) Design to meet what will service our rapid growth (50 years from now) 4) Design to accommodate growth of special events held in downtown 5) Additional access to the river, better pedestrian connectivity, suspended pedestrian walkway on main bridge 6) Upgrading Wingfield Park - amphitheater and art

Public Comment Matrix  
 Kickoff Community Meeting/Open House  
 December 12, 2019

Comment Category	Sub-Category	Comment Description
		7) Straighten Arlington Ave. and align bridge spans 8) Bridge removal process - detouring, effect on homeless, possible asbestos 9) Keeping the flow of pedestrian traffic off Arlington with pedestrian underpasses 10) Vehicle access to the island - currently city vehicles, food trucks, emergency vehicles, etc. can pass through barriers off Arlington 11) Retain current pedestrian underpass 12) Elevated bridge off cul de sac on Island Ave. 13) This bridge floods at 12,000 cubic feet and needs to be done right - it affects flooding west of it 14) Lifespan - lack of artistic "Wow" factor. 15) 335 W. First is twentieth century building, built in 1925 and on state and federal historic registers - almost destroyed in 1997 flood 16) Road design that came more gradually straight from Court Street down to 1st Street as much as possible, could eliminate a ped crossing at Island Avenue and would open up more space under a roadway for Wingfield Park and decrease flooding impediments 17) Same or similar bridge designs for the Center and Lake Street bridges would save time and cost
	Miscellaneous	1) Love the project - can't wait to see it built 2) Traffic is not driving at 15 mph speed limit over the south bridge 3) Please consider Wingfield Park amphitheater redesign when doing this project

Public Comment Matrix  
Kickoff Community Meeting/Open House  
December 12, 2019

<b>Comment Category</b>	<b>Sub-Category</b>	<b>Comment Description</b>
		<p>4) OK with existing bridges - who is paying</p> <p>5) Design should emphasize pedestrian and bike access, be beautiful and provide great views of the river (no column in the middle)</p> <p>6) This location is primarily for aesthetics and human-powered transportation, so don't allow the needs of cars to take precedence Form over function</p> <p>7) Hopefully, the Sierra Street Bridge will be replaced sooner than the Arlington bridges - the Sierra Street Bridge's center support collects debris during flooding and is in really bad shape</p>



# COMMUNITY MEETING | SIGN-IN SHEET



December 12, 2019 | 5:00pm - 7:00pm | McKinley Arts and Culture Center  
 Please print your name, check if you'd like project updates and print your email address.

NAME	CHECK FOR UPDATES	MAILING ADDRESS	EMAIL ADDRESS FOR PROJECT UPDATES
Deb Hurman		1230 Mark Twain	paris652@nrbell.net
Kaci STANSBURY		50 W. Liberty St #205 <sup>Reno 89501</sup>	kaci.stansbury@jacobs.com
John White		335 W 1st St	john@whitehawcharterf.
Logan Grant		551 California Ave	lmgant11@gmail.com
Toni Haulsh		890 Marsh	Toni.haulsh@charter
Damien Cole		175. Virginia St.	cole461@gmail.com
Mike Fness		280 Island Ave	archibald25@yahoo.com
Barb Santner		Stantec	barb.santner@stantec.com
Judy Tortelli		RTC	

# COMMUNITY MEETING | SIGN-IN SHEET



December 12, 2019 | 5:00pm - 7:00pm | McKinley Arts and Culture Center  
 Please print your name, check if you'd like project updates and print your email address.

NAME	CHECK FOR UPDATES	MAILING ADDRESS	EMAIL ADDRESS FOR PROJECT UPDATES
DANE TIMMAN			
JOHN KARACHEPONE			John.Karachepone@JACOBS.com
HONOR JONES		4290 MEADOWGATE <sup>RENO 89519</sup> TRL	
Amy Levy	✓	200 W 2nd 606	amy@alevy.net
Jared Wacław			
Paula McDonough	✓	100 N. Arlington Ave, #20-I	paulamcd@netzero.net
FRED THOLKE	✓		FREDTOPA@CHARTER.NET
Sunnie Reed			widi@keno.gov
KERRIE KOSKI		CITY of Reno	Koski.K@reno.gov
BRADLEY CARLSON	✓	4710 ELLIOTT WAY, RENO 89519	bradley.d.carlson@gmail.com

# COMMUNITY MEETING | SIGN-IN SHEET



December 12, 2019 | 5:00pm - 7:00pm | McKinley Arts and Culture Center  
 Please print your name, check if you'd like project updates and print your email address.

NAME	CHECK FOR UPDATES	MAILING ADDRESS	EMAIL ADDRESS FOR PROJECT UPDATES
Adam Carmazzi	✓	10062 Ignacio Cir Reno	Adam.Carmazzi@mbakerintl.com
Beth Macmillan	✓	528 W. 1st Street NV 89501	Beth@arttown.org
PETER STREMMEL	✓	1400 S. VIRGINIA ST.	Peter@stremmelgallery.com
Gail Jackson		518 Island Ave #4501	
Michm R. Eben	✓	Reno-Sparks Indian Colony	meben@rsic.org
Andrea Gutierrez	✓		andrea.gutierrez@dot.gov
DAN DOENGES			ddoenges@rtcwashoe.com
Sharon Honey-Bear	✓		sharonbear@sbcglobal.net
JAMES EDWARDS	X	136 W. 2nd ST #239 RENO, NV, 89501	WATERTREKKERCVN65@GMAIL
Jim Gee		RTC	jgee@rtcwashoe.com
John Flansberg	✓	City of Reno	flansbergj@reno.gov

Your RTC. Our Community.  
 rtcwashoe.com

1105 Terminal Way, Suite 211, Reno, NV 89502 | Project Manager Judy Tortelli



# COMMUNITY MEETING | SIGN-IN SHEET



December 12, 2019 | 5:00pm - 7:00pm | McKinley Arts and Culture Center  
 Please print your name, check if you'd like project updates and print your email address.

NAME	CHECK FOR UPDATES	MAILING ADDRESS	EMAIL ADDRESS FOR PROJECT UPDATES
Joanne Marke		1355 Palisade Dr., Reno 89509	—
SANDRA BERTAMINI		519 Humboldt St #1	
PEREN C HARVEY	✓	1995 BRISBANE AVE 89503	Peren.c.harvey@rtc.com
Scott Gibson	✓	575 R. & G. St. Reno 89501	sgibson@rtcwashoe.com
Steve Smythe		1025 S VA Reno NV	smythe.stephen24@gmail.com
Bryce Chisholm	✓	Twin Creeks Dr Reno	Bryce.chisholm@gmail.com
Tommy Osofsky	✓	6132 Bearcat drive, Sparks	Tommy.osofsky@Kinley-Horn.com
STEVE TERRY	✓	280 Island Ave. #402	snterry2800@gmail.com
GENE PASCUCCI	✓	4265 Muirwood Cir Reno 89509	gpascucci@sdi.net
John L'Etoile	✓	14475 Huron Trail 89521	jletoile@dot.nv.gov
Ed Park		RTC	

Your RTC. Our Community.  
 rtcwashoe.com

1105 Terminal Way, Suite 211, Reno, NV 89502 | Project Manager Judy Tortelli



# COMMUNITY MEETING | SIGN-IN SHEET



December 12, 2019 | 5:00pm - 7:00pm | McKinley Arts and Culture Center  
 Please print your name, check if you'd like project updates and print your email address.

NAME	CHECK FOR UPDATES	MAILING ADDRESS	EMAIL ADDRESS FOR PROJECT UPDATES
Kendra Menendez	✓	551 CALIFORNIA AVE	kendramenendez@gmail.com
ERIC SCHEETZ	✓	9635 GATEWAY, STE A 89521	ESCHEETZ@WASHOECOUNTY.US
Alicia Barber	✓	2370 Watt St Reno 89509	alicia@storiesinplace.com

**In the Matter Of:**

Arlington Avenue Bridges Project Public Meeting

**PUBLIC MEETING**

*December 12, 2019*

*Job Number: 592062*



1  
2  
3  
4  
5  
6  
7  
8  
9  
10  
11  
12  
13  
14  
15  
16  
17  
18  
19  
20  
21  
22  
23

REGIONAL TRANSPORTATION COMMISSION  
RTC PLANNING DEPARTMENT

-oOo-

Arlington Avenue Bridges Project  
Public Meeting  
Thursday, December 12, 2019  
Reno, Nevada

24 Reported by: Brandi Ann Vianney Smith  
25 Job Number: 592062



1

-oOo-

2

RENO, NEVADA, THURSDAY, DECEMBER 12, 2019, 5:00 P.M.

3

-oOo-

4

5

MR. MORENO: Good evening, ladies and gentlemen. We're going to get started in about four minutes. If you can make your way to a seat, we can start on time.

9

Ladies and gentlemen, thank you and good evening. Welcome to the Arlington Avenue Bridges Project meeting.

12

My name is Michael Moreno, I am the RTC Affairs Manager, and we're delighted to host you tonight. More importantly, we're delighted that you're here to give us input on the study that we are about to embark on.

17

I'm not your presenter, I'm just kicking it off with some housekeeping items. Just so everybody knows, we have two exits on either side of the building. And for restroom facilities, we have restroom facilities through this door here, and then through those doors back there to the right.

23

We also have some treats. Please drink and eat them, because we don't want to take them back to the office. So they'll hold you over during this

25



1 meeting.

2           Tonight is an open house format. That's what  
3 you've been doing for the last half hour. We're going  
4 to do a quick presentation that Brian is going to kick  
5 off. He is also going to give you additional  
6 information.

7           I do want to make some acknowledgments.

8           Councilwoman Brekhus from the City of Reno is  
9 here. She is one of our representatives. Thank you,  
10 Councilwoman.

11           And then we also have City of Reno staff.  
12 The City of Reno is a partner with us on this project.  
13 I want to acknowledge them: John Flansberg, Kerrie  
14 Koskie, and Jon Simpson.

15           And then some other folks -- oh, and Sienna  
16 Reid.

17           And then, also, another partner with us is  
18 from the Federal Highway Administration, and that's  
19 Andrea Gutierrez and Jake Waclaw. Thank you all for  
20 being here tonight.

21           Last thing I want to let you know before I  
22 introduce Mr. Stewart is we will be livestreaming the  
23 presentation on RTC's Facebook page. So that's going  
24 to start, because I don't want to go live, when Brian  
25 gets up here.

1           And then last but not least, it's my pleasure  
2 to introduce the RTC Director of Engineering, Brian  
3 Stewart, who will kick off tonight's program.

4           (Applause.)

5           MR. STEWART: Thank you, Michael.

6           MR. MORENO: Oh, wait.

7           MR. STEWART: Michael, one more time.

8           MR. MORENO: For those who know me, I do this  
9 all the time.

10           I think some of you know we've got another  
11 major project under construction right now, the  
12 Virginia Street Project.

13           So I just want to encourage you to support  
14 MidTown businesses during construction. We want them  
15 to be successful not only during construction, but  
16 especially post-construction.

17           Their kicking off a holiday fun Holidingo on  
18 December 14th, where you can win prizes by supporting  
19 the businesses, getting a stamp. I have bingo cards at  
20 the table there. Please take one. It starts on the  
21 14th, and it will go through December 23rd. They have  
22 a lot of great prizes that they're giving away. Great  
23 deals at the merchants.

24           It's up to all of us to help them be  
25 successful and support our community so they can



1 continue to thrive.

2 With that, Brian.

3 MR. STEWART: Thanks, Michael.

4 Again, Brian Stewart, Director of Engineering  
5 with RTC. Great turn out. I'm excited to have  
6 everybody here, listen to your comments on this great  
7 project, the bridge replacement for the Arlington  
8 bridges.

9 It's so exciting to see you here. RTC loves  
10 to see a face to face and be able to communicate and  
11 hear from you guys as we start this great project off.

12 So what I'd like to do is just introduce the  
13 team and sort of a little bit of the format of what's  
14 going to go on.

15 So if you're from RTC, raise your hand.

16 So look around. There's people, you can talk  
17 to them. They'll be at the boards afterwards so they  
18 can answer questions, anything, and we'll try to answer  
19 those for you.

20 Also, Jacobs Engineering is our selected firm  
21 for this study -- this feasibility study. The Jacobs  
22 people are here. Raise your hands.

23 You can ask them questions too on the project  
24 and the details and what's going on and provide  
25 comments to them.



1           And then Michael already introduced the City  
2 of Reno.

3           Without further ado, just to make it really  
4 quick here, our Project Manager, Judy Tortelli, will  
5 take this over, walk you through the presentation. And  
6 then, like Michael said, it's open house, and you have  
7 ways to share your comments with us.

8           So, Judy.

9           MS. TORTELLI: Thank you, Brian.

10          Welcome everybody. I'm Judy Tortelli,  
11 Project Manager for the RTC, and I'm here tonight to  
12 hear from you about the Arlington Bridges Project.

13          Please make sure that you sign in at the  
14 greeting table and provide us with a legible email  
15 address to receive project updates.

16          As Brian mentioned, this is an open house  
17 format meeting. I'll give a brief presentation, and  
18 then invite you all to visit the display boards around  
19 the room, where staff will answer your questions and  
20 take your comments.

21          So the purpose of tonight's meeting is to  
22 tell you about the project and answer any questions.  
23 We're looking specifically for feedback on the purpose  
24 and need, evaluation criteria, and range of bridge  
25 alternatives.



1           So what happens with the comments we receive  
2 here tonight? Well, your input is a springboard for  
3 this feasibility study, and will help shape the  
4 direction that it takes.

5           Information gathered here will be given to  
6 our stakeholder working group and used in the  
7 alternative screening process. This group will  
8 finalize the evaluation criteria, review engineering  
9 and technical results, and make recommendations  
10 regarding specific alternatives.

11           The stakeholder working group is comprised of  
12 major permitting agencies, groups and organizations  
13 that represent a larger component of Downtown, and  
14 immediate adjacent property owners. It is tasked with  
15 providing the bulk of the input that will guide the  
16 screening process.

17           So the purpose and needs statement describes  
18 the intention of the project and states the problems.  
19 It sets the stage for developing and evaluating  
20 possible improvement alternatives. But is not mode  
21 specific or biased toward a particular solution.

22           The Arlington Avenue bridges were built in  
23 the 1930s. They're categorized as structurally  
24 deficient by NDOT, and it's time for us to begin the  
25 process of replacing them.



1           These bridges provide access over the Truckee  
2 River and split the Wingfield Park area. The project  
3 needs to maintain a functional bridge over the river,  
4 improve safety and multi-modal access to the park area,  
5 and meet flood capacity requirements.

6           The scope of this project is to complete the  
7 feasibility study, to define bridge options, identify  
8 constraints, and determine costs. At the end, we will  
9 have a bridge and aesthetic package identified to carry  
10 forward into environmental clearance and design.

11           Decisions will be documented using a process  
12 called "Planning and Environmental Linkages," also  
13 known as "PEL."

14           Following this process helps inform decision  
15 making, engages the public and stakeholders, and will  
16 streamline the future NEPA process.

17           So here's a map of the bridges. As you can  
18 see, Arlington Avenue splits Wingfield Park. This  
19 study includes both bridges, the smaller one on the  
20 south and a longer one on the north.

21           So this is not the first time these bridges  
22 have been studied. Back in 2009, the City of Reno  
23 completed the TRAction Visioning Project. It served as  
24 a component of the Truckee River Flood Project's master  
25 plan to provide improved safety along the Truckee River



1 corridor.

2           This study was the result of the '97 and 2005  
3 flood events and focused on finding the best solutions  
4 for improved flood protection in downtown Reno. That  
5 study included six downtown bridges: Booth, Arlington,  
6 Sierra, Virginia, Center, and Lake.

7           Based on public outreach and stakeholder  
8 input, the focus became balancing the appearance of the  
9 bridges with an acceptable level of flood protection.

10           From a flood protection perspective, the  
11 study determined that the bridges should be replaced,  
12 not rehabilitated, and the upstream detention,  
13 diversion channels, dredging, or widening the river and  
14 debris fields were not viable alternatives.

15           This project aims to pick up where that  
16 TRAction work ended, but with additional emphasis on  
17 transportation uses.

18           Our process includes receiving public,  
19 stakeholder, and technical input to identify  
20 environmental constraints, develop design standards,  
21 evaluation criteria, and bridge and aesthetic  
22 alternatives.

23           Alternatives will be evaluated based on  
24 ability to meet project purposes and need, ability to  
25 avoid and minimize impact to the natural and developing



1 environment, construction feasibility, cost and input  
2 from the stakeholder working group, the City of Reno  
3 Council, the RTC Board, and the public.

4 We will hold another public meeting at the  
5 end of the alternative screening process to get more  
6 input and refine alternatives.

7 So here's some sample criteria initially  
8 established to ensure engineering feasibility, limit  
9 right-of-way impacts, minimize environment, cultural  
10 and community impacts, provide access to Wingfield Park  
11 and the Truckee River, and ensure long-term,  
12 maintainable solutions for proposed improvements. This  
13 is one of those specific boards that we need your input  
14 on.

15 So here's a couple ranges of bridge  
16 alternatives that a we're looking at now. Here, again,  
17 this is where we need some input from you.

18 Couple things that we're looking at is a  
19 single pier concept, a clear span concept, an under  
20 deck arch concept, and a tight arch concept.

21 We're also looking at an elevated bridge  
22 concept. This is kind of an adaptation from that  
23 TRAction report that I was talking about.

24 We have these five boards over here that show  
25 all of these various concepts with some conceptual



1 renderings (indicated).

2 Here is kind of our overall project plan and  
3 the schedule. We're at the public kick off meeting  
4 right now, that first little star (indicated.)

5 We'll be identifying and analyzing bridge and  
6 aesthetic concepts with this feasibility study through  
7 toward the end of next year. We will have another  
8 public meeting and complete the feasibility study by  
9 the end of next year.

10 From there, we'll kind of kick off the  
11 environmental and design phase of the project. And  
12 right now, construction is anticipated to start in  
13 2026.

14 So I just wanted to add that right now the  
15 project cost is estimated at \$25.5 million dollars. We  
16 currently do not have funding identified for  
17 construction of the bridges, but that's part of the  
18 feasibility study also is to help identify potential  
19 funding.

20 So how can you make a comment? There are  
21 comment forms at the greeting table, which you may fill  
22 out and place in our comment box. You can complete a  
23 comment form and either mail or email it to me. My  
24 contact information is up there on the screen. I also  
25 have some business cards at the back of the room. You



1 can make a comment to our court reporter, Brandi, she's  
2 over here. And I just want to let everybody know, we  
3 do have a Spanish translator in the back. He's  
4 available to provide assistance, if that is necessary.

5 You can always visit [rtcwashoe.com](http://rtcwashoe.com) and search  
6 Arlington Avenue to review the materials that are at  
7 this kick off meeting.

8 So with that, I just want to say thank you  
9 for attending. Please visit the display boards, ask  
10 questions, and give us your comments.

11 (Applause.)

12 -oOo-

13 PUBLIC COMMENT

14 -oOo-

15 BY MS. HONOR JONES:

16 I think that this project has to look for  
17 what's right 50 years from now. Meaning, number one,  
18 without exception, we have to have a means of getting  
19 emergency vehicles across the river. Meaning  
20 ambulances, fire trucks, et cetera.

21 Secondly, if we think of what our needs are  
22 going to be 50 years from now, our population is going  
23 to double. Yet we want to attract people to Downtown.  
24 So we must build with that in mind.

25 My proposal would be to elevate that bridge



1 high enough so that underneath the bridge becomes very  
2 functional. It would come off of Arlington, not quite  
3 at Court Street, but right there, and come across and  
4 be above First Street coming out somewhere around  
5 Second Street back to base level.

6 This would create a safety intersection at  
7 First Street and Arlington. It would allow, as I  
8 mentioned, the emergency vehicles to go across.

9 Now ultimately, we would still have to build  
10 it for pedestrians, and that's easy enough to do in the  
11 design stage. But we also need it high enough so that  
12 people can comfortably walk under it, and events that  
13 they're holding in Wingfield Park can have the  
14 expansion possibilities without ever crossing the  
15 street because they will be under it.

16 In design, form follows function. That's a  
17 general rule. So we must do it functionally before we  
18 do the form or the design.

19 BY MR. PETER HARVEY:

20 My main concern is the bridge-to-river  
21 environment interface. And then the public's interface  
22 with that bridge to the river being located in  
23 Wingfield Park.

24 My preference, without knowing enough  
25 information, is the elevated bridge concept, as it



1 allows pedestrian traffic from the east and west sides  
2 of the park under the bridges so that pedestrians don't  
3 have to get in their vehicles.

4 I would prefer a design that took all the  
5 piers out of the river for an aesthetic reason, also a  
6 safety reason for the public, and flooding situations.

7 Because of the bridges' location in Wingfield  
8 Park, I would be interested in a more artistic bridge  
9 than a utilitarian bridge, as Wingfield Park is home of  
10 Artown for a month in the summer. If it's home of  
11 Artown, it can have some whimsy.

12 I would like the eventual design to have some  
13 way that it ties into the Virginia Street bridge,  
14 architecturally, visually, and aesthetically.

15

16

17

18

19

20

21

22

23

24

25



1 STATE OF NEVADA )  
2 COUNTY OF WASHOE ) ss.

3 I, BRANDI ANN VIANNEY SMITH, a court  
4 reporter, do hereby certify:

5 That on Thursday December 12th, 2019, at the  
6 hour of 5:00 P.M. of said day, at the McKinley Arts and  
7 Culture Center, 925 Riverside Drive, Reno, Nevada, a  
8 public meeting was held, namely: Arlington Avenue  
9 Bridges Project Pubic Meeting;

10 That the meeting was taken in verbatim  
11 stenotype notes by me, a court reporter, and thereafter  
12 transcribed into typewriting as herein appears;

13 That the foregoing transcript, consisting of  
14 pages 1 through 14, is a full, true, and correct  
15 transcription of my stenotype notes of said public  
16 comment, to the best of my knowledge, skill and  
17 ability.

18 Dated at Gardnerville, Nevada, this 15th day  
19 of December, 2019.

20 /s/ Brandi Ann Vianney Smith

21 \_\_\_\_\_  
22 BRANDI ANN VIANNEY SMITH

23  
24  
25

1 HEALTH INFORMATION PRIVACY & SECURITY: CAUTIONARY NOTICE  
2 Litigation Services is committed to compliance with applicable federal  
3 and state laws and regulations ("Privacy Laws") governing the  
4 protection and security of patient health information. Notice is  
5 hereby given to all parties that transcripts of depositions and legal  
6 proceedings, and transcript exhibits, may contain patient health  
7 information that is protected from unauthorized access, use and  
8 disclosure by Privacy Laws. Litigation Services requires that access,  
9 maintenance, use, and disclosure (including but not limited to  
10 electronic database maintenance and access, storage, distribution/  
11 dissemination and communication) of transcripts/exhibits containing  
12 patient information be performed in compliance with Privacy Laws.  
13 No transcript or exhibit containing protected patient health  
14 information may be further disclosed except as permitted by Privacy  
15 Laws. Litigation Services expects that all parties, parties'  
16 attorneys, and their HIPAA Business Associates and Subcontractors will  
17 make every reasonable effort to protect and secure patient health  
18 information, and to comply with applicable Privacy Law mandates,  
19 including but not limited to restrictions on access, storage, use, and  
20 disclosure (sharing) of transcripts and transcript exhibits, and  
21 applying "minimum necessary" standards where appropriate. It is  
22 recommended that your office review its policies regarding sharing of  
23 transcripts and exhibits - including access, storage, use, and  
24 disclosure - for compliance with Privacy Laws.

25 © All Rights Reserved. Litigation Services (rev. 6/1/2019)



<b>\$</b>	<b>9</b>	<b>address</b> 6:15	<b>along</b> 8:25	<b>anything</b> 5:18
<b>\$25.5</b> 11:15	<b>97</b> 9:2	<b>adjacent</b> 7:14	<b>already</b> 6:1	<b>appearance</b> 9:8
<b>1</b>	<b>A</b>	<b>Administratio</b> <b>n</b> 3:18	<b>also</b> 2:23 3:5, 11,17 5:20 8:12 10:21 11:18,24 13:11 14:5	<b>Applause</b> 4:4 12:11
<b>12</b> 1:11 2:2	<b>ability</b> 9:24	<b>ado</b> 6:3		<b>arch</b> 10:20
<b>14th</b> 4:18,21	<b>able</b> 5:10	<b>aesthetic</b> 8:9 9:21 11:6 14:5	<b>alternative</b> 7:7 10:5	<b>architecturall</b> <b>y</b> 14:14
<b>1930s</b> 7:23	<b>above</b> 13:4	<b>aesthetically</b> 14:14	<b>alternatives</b> 6:25 7:10,20 9:14,22,23 10:6,16	<b>area</b> 8:2,4
<b>2</b>	<b>acceptable</b> 9:9	<b>Affairs</b> 2:13	<b>always</b> 12:5	<b>Arlington</b> 1:9 2:10 5:7 6:12 7:22 8:18 9:5 12:6 13:2,7
<b>2005</b> 9:2	<b>access</b> 8:1,4 10:10	<b>afterwards</b> 5:17	<b>ambulances</b> 12:20	<b>around</b> 5:16 6:18 13:4
<b>2009</b> 8:22	<b>acknowledge</b> 3:13	<b>again</b> 5:4 10:16	<b>analyzing</b> 11:5	<b>artistic</b> 14:8
<b>2019</b> 1:11 2:2	<b>acknowledgm</b> <b>ents</b> 3:7	<b>agencies</b> 7:12	<b>Andrea</b> 3:19	<b>Artown</b> 14:10,11
<b>2026</b> 11:13	<b>across</b> 12:19 13:3,8	<b>aims</b> 9:15	<b>Ann</b> 1:24	<b>assistance</b> 12:4
<b>23rd</b> 4:21	<b>adaptation</b> 10:22	<b>all</b> 3:19 4:9,24 6:18 10:25 14:4	<b>another</b> 3:17 4:10 10:4 11:7	<b>attending</b> 12:9
<b>5</b>	<b>add</b> 11:14	<b>allow</b> 13:7	<b>anticipated</b> 11:12	<b>attract</b> 12:23
<b>50</b> 12:17,22	<b>additional</b> 3:5 9:16	<b>allows</b> 14:1		<b>available</b> 12:4
<b>592062</b> 1:25				
<b>5:00</b> 2:2				

<b>Avenue</b> 1:9 2:10 7:22 8:18 12:6	<b>biased</b> 7:21	<b>bridges</b> 1:9 2:10 5:8 6:12 7:22 8:1,17, 19,21 9:5,9, 11 11:17 14:2	<b>categorized</b> 7:23	5:10
<b>avoid</b> 9:25	<b>bingo</b> 4:19		<b>Center</b> 9:6	<b>community</b> 4:25 10:10
<b>away</b> 4:22	<b>bit</b> 5:13	<b>bridges'</b> 14:7	<b>cetera</b> 12:20	<b>complete</b> 8:6 11:8,22
<hr/> <b>B</b> <hr/>	<b>Board</b> 10:3	<b>brief</b> 6:17	<b>channels</b> 9:13	<b>completed</b> 8:23
<b>back</b> 2:22,24 8:22 11:25 12:3 13:5	<b>boards</b> 5:17 6:18 10:13,24 12:9	<b>build</b> 12:24 13:9	<b>City</b> 3:8,11,12 6:1 8:22 10:2	<b>component</b> 7:13 8:24
<b>balancing</b> 9:8	<b>Booth</b> 9:5	<b>building</b> 2:20	<b>clear</b> 10:19	<b>comprised</b> 7:11
<b>base</b> 13:5	<b>both</b> 8:19	<b>built</b> 7:22	<b>clearance</b> 8:10	<b>concept</b> 10:19,20,22 13:25
<b>based</b> 9:7,23	<b>box</b> 11:22	<b>bulk</b> 7:15	<b>come</b> 13:2,3	<b>concepts</b> 10:25 11:6
<b>became</b> 9:8	<b>Brandi</b> 1:24 12:1	<b>business</b> 11:25	<b>comfortably</b> 13:12	<b>conceptual</b> 10:25
<b>becomes</b> 13:1	<b>Brekhus</b> 3:8	<b>businesses</b> 4:14,19	<b>coming</b> 13:4	<b>concern</b> 13:20
<b>before</b> 3:21 13:17	<b>Brian</b> 3:4,24 4:2 5:2,4 6:9, 16	<hr/> <b>C</b> <hr/>	<b>comment</b> 11:20,21,22, 23 12:1,13	<b>constraints</b> 8:8 9:20
<b>begin</b> 7:24	<b>bridge</b> 5:7 6:24 8:3,7,9 9:21 10:15,21 11:5 12:25 13:1,22,25 14:8,9,13	<b>called</b> 8:12	<b>comments</b> 5:6,25 6:7,20 7:1 12:10	<b>construction</b> 4:11,14,15 10:1 11:12,17
<b>being</b> 3:20 13:22	<b>bridge-to- river</b> 13:20	<b>capacity</b> 8:5	<b>COMMISSION</b> 1:4	
<b>best</b> 9:3		<b>cards</b> 4:19 11:25	<b>communicate</b>	
		<b>carry</b> 8:9		



<b>contact</b> 11:24	<b>D</b>	<b>detention</b> 9:12	7:13 9:4,5 12:23	<b>emphasis</b> 9:16
<b>continue</b> 5:1	<b>deals</b> 4:23	<b>determine</b> 8:8	<b>dredging</b> 9:13	<b>encourage</b> 4:13
<b>corridor</b> 9:1	<b>debris</b> 9:14	<b>determined</b> 9:11	<b>drink</b> 2:23	<b>end</b> 8:8 10:5 11:7,9
<b>cost</b> 10:1 11:15	<b>December</b> 1:11 2:2 4:18, 21	<b>develop</b> 9:20	<b>during</b> 2:25 4:14,15	<b>ended</b> 9:16
<b>costs</b> 8:8	<b>decision</b> 8:14	<b>developing</b> 7:19 9:25	<b>E</b>	<b>engages</b> 8:15
<b>Council</b> 10:3	<b>Decisions</b> 8:11	<b>direction</b> 7:4	<b>east</b> 14:1	<b>engineering</b> 4:2 5:4,20 7:8 10:8
<b>Councilwoman</b> 3:8,10	<b>deck</b> 10:20	<b>Director</b> 4:2 5:4	<b>easy</b> 13:10	<b>enough</b> 13:1, 10,11,24
<b>couple</b> 10:15, 18	<b>deficient</b> 7:24	<b>display</b> 6:18 12:9	<b>eat</b> 2:24	<b>ensure</b> 10:8, 11
<b>court</b> 12:1 13:3	<b>define</b> 8:7	<b>diversion</b> 9:13	<b>either</b> 2:19 11:23	<b>environment</b> 10:1,9 13:21
<b>create</b> 13:6	<b>delighted</b> 2:13,14	<b>documented</b> 8:11	<b>elevate</b> 12:25	<b>environmenta</b> l 8:10,12 9:20 11:11
<b>criteria</b> 6:24 7:8 9:21 10:7	<b>DEPARTMEN</b> T 1:5	<b>dollars</b> 11:15	<b>elevated</b> 10:21 13:25	<b>especially</b> 4:16
<b>crossing</b> 13:14	<b>describes</b> 7:17	<b>door</b> 2:21	<b>email</b> 6:14 11:23	<b>established</b> 10:8
<b>cultural</b> 10:9	<b>design</b> 8:10 9:20 11:11 13:11,16,18 14:4,12	<b>doors</b> 2:22	<b>embark</b> 2:16	<b>estimated</b>
<b>currently</b> 11:16	<b>details</b> 5:24	<b>double</b> 12:23	<b>emergency</b> 12:19 13:8	
		<b>downtown</b>		

11:15	<b>F</b>	<b>five</b> 10:24	13:16	<b>great</b> 4:22 5:5,6,11
<b>evaluated</b> 9:23	<b>face</b> 5:10	<b>Flansberg</b> 3:13	<b>functional</b> 8:3 13:2	<b>greeting</b> 6:14 11:21
<b>evaluating</b> 7:19	<b>Facebook</b> 3:23	<b>flood</b> 8:5,24 9:3,4,9,10	<b>functionally</b> 13:17	<b>group</b> 7:6,7, 11 10:2
<b>evaluation</b> 6:24 7:8 9:21	<b>facilities</b> 2:20,21	<b>flooding</b> 14:6	<b>funding</b> 11:16,19	<b>groups</b> 7:12
<b>evening</b> 2:5, 10	<b>feasibility</b> 5:21 7:3 8:7 10:1,8 11:6,8, 18	<b>focus</b> 9:8	<b>further</b> 6:3	<b>guide</b> 7:15
<b>events</b> 9:3 13:12	<b>Federal</b> 3:18	<b>focused</b> 9:3	<b>future</b> 8:16	<b>Gutierrez</b> 3:19
<b>eventual</b> 14:12	<b>feedback</b> 6:23	<b>folks</b> 3:15	<b>G</b>	<b>guys</b> 5:11
<b>everybody</b> 2:18 5:6 6:10 12:2	<b>fields</b> 9:14	<b>Following</b> 8:14	<b>gathered</b> 7:5	<b>H</b>
<b>exception</b> 12:18	<b>fill</b> 11:21	<b>follows</b> 13:16	<b>general</b> 13:17	<b>half</b> 3:3
<b>excited</b> 5:5	<b>finalize</b> 7:8	<b>form</b> 11:23 13:16,18	<b>gentlemen</b> 2:6,9	<b>hand</b> 5:15
<b>exciting</b> 5:9	<b>finding</b> 9:3	<b>format</b> 3:2 5:13 6:17	<b>getting</b> 4:19 12:18	<b>hands</b> 5:22
<b>exits</b> 2:19	<b>fire</b> 12:20	<b>forms</b> 11:21	<b>give</b> 2:15 3:5 6:17 12:10	<b>happens</b> 7:1
<b>expansion</b> 13:14	<b>firm</b> 5:20	<b>forward</b> 8:10	<b>given</b> 7:5	<b>HARVEY</b> 13:19
	<b>first</b> 8:21 11:4 13:4,7	<b>four</b> 2:6	<b>giving</b> 4:22	<b>hear</b> 5:11 6:12
		<b>fun</b> 4:17	<b>good</b> 2:5,9	<b>help</b> 4:24 7:3
		<b>function</b>		



11:18	<b>house</b> 3:2 6:6,16	<b>improvement</b> s 10:12	<b>introduce</b> 3:22 4:2 5:12	<b>kicking</b> 2:17 4:17
<b>helps</b> 8:14	<b>housekeeping</b> 2:18	<b>included</b> 9:5	<b>introduced</b> 6:1	<b>kind</b> 10:22 11:2,10
<b>here</b> 2:15,21 3:9,20,25 5:6, 9,22 6:4,11 7:2,5 10:16, 24 11:2 12:2	<b>I</b>	<b>includes</b> 8:19 9:18	<b>invite</b> 6:18	<b>knowing</b> 13:24
<b>here's</b> 8:17 10:7,15	<b>identified</b> 8:9 11:16	<b>indicated</b> 11:1,4	<b>items</b> 2:18	<b>known</b> 8:13
<b>high</b> 13:1,11	<b>identify</b> 8:7 9:19 11:18	<b>inform</b> 8:14	<b>J</b>	<b>knows</b> 2:19
<b>Highway</b> 3:18	<b>identifying</b> 11:5	<b>information</b> 3:6 7:5 11:24 13:25	<b>Jacobs</b> 5:20, 21	<b>Koskie</b> 3:14
<b>hold</b> 2:25 10:4	<b>immediate</b> 7:14	<b>initially</b> 10:7	<b>Jake</b> 3:19	<b>L</b>
<b>holding</b> 13:13	<b>impact</b> 9:25	<b>input</b> 2:15 7:2,15 9:8,19 10:1,6,13,17	<b>Job</b> 1:25	<b>ladies</b> 2:5,9
<b>holiday</b> 4:17	<b>impacts</b> 10:9, 10	<b>intention</b> 7:18	<b>John</b> 3:13	<b>Lake</b> 9:6
<b>Holidingo</b> 4:17	<b>importantly</b> 2:14	<b>interested</b> 14:8	<b>Jon</b> 3:14	<b>larger</b> 7:13
<b>home</b> 14:9,10	<b>improve</b> 8:4	<b>interface</b> 13:21	<b>JONES</b> 12:15	<b>last</b> 3:3,21 4:1
<b>HONOR</b> 12:15	<b>improved</b> 8:25 9:4	<b>intersection</b> 13:6	<b>Judy</b> 6:4,8,10	<b>least</b> 4:1
<b>host</b> 2:13	<b>improvement</b> 7:20	<b>into</b> 8:10 14:13	<b>K</b>	<b>legible</b> 6:14
<b>hour</b> 3:3			<b>Kerrie</b> 3:13	<b>let</b> 3:21 12:2
			<b>kick</b> 3:4 4:3 11:3,10 12:7	<b>level</b> 9:9 13:5
				<b>like</b> 5:12 6:6

14:12	<b>main</b> 13:20	2:11 3:1 6:17, 21 10:4 11:3, 8 12:7	8:4	<b>O</b>
<b>limit</b> 10:8	<b>maintain</b> 8:3		<b>must</b> 12:24 13:17	<b>off</b> 2:18 3:5 4:3,17 5:11 11:3,10 12:7 13:2
<b>Linkages</b> 8:12	<b>maintainable</b> 10:12	<b>mentioned</b> 6:16 13:8	<b>N</b>	
<b>listen</b> 5:6	<b>major</b> 4:11 7:12	<b>merchants</b> 4:23	<b>name</b> 2:12	<b>office</b> 2:25
<b>little</b> 5:13 11:4	<b>make</b> 2:7 3:7 6:3,13 7:9 11:20 12:1	<b>Michael</b> 2:12 4:5,7 5:3 6:1, 6	<b>natural</b> 9:25	<b>one</b> 3:9 4:7, 20 8:19,20 10:13 12:17
<b>live</b> 3:24		<b>Midtown</b> 4:14	<b>NDOT</b> 7:24	<b>only</b> 4:15
<b>livestreaming</b> 3:22	<b>making</b> 8:15	<b>million</b> 11:15	<b>necessary</b> 12:4	<b>open</b> 3:2 6:6, 16
<b>located</b> 13:22	<b>Manager</b> 2:13 6:4,11	<b>mind</b> 12:24	<b>need</b> 6:24 9:24 10:13,17 13:11	<b>options</b> 8:7
<b>location</b> 14:7	<b>map</b> 8:17	<b>minimize</b> 9:25 10:9	<b>needs</b> 7:17 8:3 12:21	<b>organizations</b> 7:12
<b>long-term</b> 10:11	<b>master</b> 8:24	<b>minutes</b> 2:7	<b>NEPA</b> 8:16	<b>outreach</b> 9:7
<b>longer</b> 8:20	<b>materials</b> 12:6	<b>mode</b> 7:20	<b>Nevada</b> 1:12 2:2 15:1	<b>over</b> 2:25 6:5 8:1,3 10:24 12:2
<b>looking</b> 6:23 10:16,18,21	<b>may</b> 11:21	<b>month</b> 14:10	<b>next</b> 11:7,9	<b>overall</b> 11:2
<b>lot</b> 4:22	<b>Meaning</b> 12:17,19	<b>more</b> 2:14 4:7 10:5 14:8	<b>north</b> 8:20	<b>owners</b> 7:14
<b>loves</b> 5:9	<b>means</b> 12:18	<b>Moreno</b> 2:5, 12 4:6,8	<b>number</b> 1:25 12:17	<b>P</b>
<b>M</b>	<b>meet</b> 8:5 9:24	<b>multi-modal</b>		
<b>mail</b> 11:23	<b>meeting</b> 1:10			<b>P.M.</b> 2:2



<b>package</b> 8:9	<b>pier</b> 10:19	<b>presenter</b> 2:17	<b>provide</b> 5:24 6:14 8:1,25 10:10 12:4	<b>range</b> 6:24
<b>park</b> 8:2,4,18 10:10 13:13, 23 14:2,8,9	<b>piers</b> 14:5	<b>prizes</b> 4:18, 22	<b>providing</b> 7:15	<b>ranges</b> 10:15
<b>part</b> 11:17	<b>place</b> 11:22	<b>problems</b> 7:18	<b>public</b> 1:10 8:15 9:7,18 10:3,4 11:3,8 12:13 14:6	<b>really</b> 6:3
<b>particular</b> 7:21	<b>plan</b> 8:25 11:2	<b>process</b> 7:7, 16,25 8:11, 14,16 9:18 10:5	<b>public's</b> 13:21	<b>reason</b> 14:5,6
<b>partner</b> 3:12, 17	<b>Planning</b> 1:5 8:12	<b>program</b> 4:3	<b>purpose</b> 6:21, 23 7:17	<b>receive</b> 6:15 7:1
<b>pedestrian</b> 14:1	<b>population</b> 12:22	<b>project</b> 1:9 2:11 3:12 4:11,12 5:7, 11,23 6:4,11, 12,15,22 7:18 8:2,6,23 9:15, 24 11:2,11,15 12:16	<b>purposes</b> 9:24	<b>receiving</b> 9:18
<b>pedestrians</b> 13:10 14:2	<b>possibilities</b> 13:14	<b>Project's</b> 8:24	<hr/> <b>Q</b> <hr/>	<b>recommendat ions</b> 7:9
<b>PEL</b> 8:13	<b>possible</b> 7:20	<b>property</b> 7:14	<b>questions</b> 5:18,23 6:19, 22 12:10	<b>refine</b> 10:6
<b>people</b> 5:16, 22 12:23 13:12	<b>post- construction</b> 4:16	<b>proposal</b> 12:25	<b>quick</b> 3:4 6:4	<b>regarding</b> 7:10
<b>permitting</b> 7:12	<b>potential</b> 11:18	<b>proposed</b> 10:12	<hr/> <b>R</b> <hr/>	<b>REGIONAL</b> 1:4
<b>perspective</b> 9:10	<b>prefer</b> 14:4	<b>protection</b> 9:4,9,10	<b>quite</b> 13:2	<b>rehabilitated</b> 9:12
<b>PETER</b> 13:19	<b>preference</b> 13:24			<b>Reid</b> 3:16
<b>phase</b> 11:11	<b>presentation</b> 3:4,23 6:5,17		<b>raise</b> 5:15,22	<b>renderings</b> 11:1
<b>pick</b> 9:15				<b>Reno</b> 1:12 2:2 3:8,11,12 6:2 8:22 9:4 10:2

<b>replaced</b> 9:11	<b>river</b> 8:2,3,24, 25 9:13 10:11 12:19 13:22 14:5	<b>screening</b> 7:7,16 10:5	<b>Simpson</b> 3:14	<b>splits</b> 8:18
<b>replacement</b> 5:7		<b>search</b> 12:5	<b>single</b> 10:19	<b>springboard</b> 7:2
<b>replacing</b> 7:25	<b>room</b> 6:19 11:25	<b>seat</b> 2:7	<b>situations</b> 14:6	<b>staff</b> 3:11 6:19
<b>report</b> 10:23	<b>RTC</b> 1:5 2:12 4:2 5:5,9,15 6:11 10:3	<b>Second</b> 13:5	<b>six</b> 9:5	<b>stage</b> 7:19 13:11
<b>Reported</b> 1:24	<b>RTC's</b> 3:23	<b>Secondly</b> 12:21	<b>smaller</b> 8:19	<b>stakeholder</b> 7:6,11 9:7,19 10:2
<b>reporter</b> 12:1	<b>rtcwashoe.</b> <b>com</b> 12:5	<b>selected</b> 5:20	<b>Smith</b> 1:24	<b>stakeholders</b> 8:15
<b>represent</b> 7:13	<b>rule</b> 13:17	<b>served</b> 8:23	<b>solution</b> 7:21	<b>stamp</b> 4:19
<b>representativ</b> <b>es</b> 3:9	<hr/> <b>S</b> <hr/>	<b>sets</b> 7:19	<b>solutions</b> 9:3 10:12	<b>standards</b> 9:20
<b>requirements</b> 8:5	<b>safety</b> 8:4,25 13:6 14:6	<b>shape</b> 7:3	<b>somewhere</b> 13:4	<b>star</b> 11:4
<b>restroom</b> 2:20,21	<b>said</b> 6:6	<b>share</b> 6:7	<b>sort</b> 5:13	<b>start</b> 2:8 3:24 5:11 11:12
<b>result</b> 9:2	<b>sample</b> 10:7	<b>should</b> 9:11	<b>south</b> 8:20	<b>started</b> 2:6
<b>results</b> 7:9	<b>say</b> 12:8	<b>show</b> 10:24	<b>span</b> 10:19	<b>starts</b> 4:20
<b>review</b> 7:8 12:6	<b>schedule</b> 11:3	<b>side</b> 2:19	<b>Spanish</b> 12:3	<b>STATE</b> 15:1
<b>right-of-way</b> 10:9	<b>scope</b> 8:6	<b>sides</b> 14:1	<b>specific</b> 7:10, 21 10:13	<b>statement</b> 7:17
	<b>screen</b> 11:24	<b>Sienna</b> 3:15	<b>specifically</b> 6:23	
		<b>Sierra</b> 9:6	<b>split</b> 8:2	
		<b>sign</b> 6:13		



<b>states</b> 7:18	<hr/> <b>T</b> <hr/>	<b>Thursday</b> 1:11 2:2	<b>treats</b> 2:23	<b>utilitarian</b> 14:9
<b>Stewart</b> 3:22 4:3,5,7 5:3,4	<b>table</b> 4:20 6:14 11:21	<b>ties</b> 14:13	<b>Truckee</b> 8:1, 24,25 10:11	<hr/> <b>V</b> <hr/>
<b>still</b> 13:9	<b>take</b> 2:24 4:20 6:5,20	<b>tight</b> 10:20	<b>trucks</b> 12:20	<b>various</b> 10:25
<b>streamline</b> 8:16	<b>takes</b> 7:4	<b>time</b> 2:8 4:7,9 7:24 8:21	<b>try</b> 5:18	<b>vehicles</b> 12:19 13:8 14:3
<b>street</b> 4:12 13:3,4,5,7,15 14:13	<b>talk</b> 5:16	<b>tonight</b> 2:14 3:2,20 6:11 7:2	<b>turn</b> 5:5	<b>viable</b> 9:14
<b>structurally</b> 7:23	<b>talking</b> 10:23	<b>tonight's</b> 4:3 6:21	<hr/> <b>U</b> <hr/>	<b>Vianney</b> 1:24
<b>studied</b> 8:22	<b>tasked</b> 7:14	<b>took</b> 14:4	<b>ultimately</b> 13:9	<b>Virginia</b> 4:12 9:6 14:13
<b>study</b> 2:15 5:21 7:3 8:7, 19 9:2,5,11 11:6,8,18	<b>team</b> 5:13	<b>Tortelli</b> 6:4,9, 10	<b>under</b> 4:11 10:19 13:12, 15 14:2	<b>Visioning</b> 8:23
<b>successful</b> 4:15,25	<b>technical</b> 7:9 9:19	<b>toward</b> 7:21 11:7	<b>underneath</b> 13:1	<b>visit</b> 6:18 12:5,9
<b>summer</b> 14:10	<b>than</b> 14:9	<b>TRACTION</b> 8:23 9:16 10:23	<b>updates</b> 6:15	<b>visually</b> 14:14
<b>support</b> 4:13, 25	<b>their</b> 4:17 14:3	<b>traffic</b> 14:1	<b>upstream</b> 9:12	<hr/> <b>W</b> <hr/>
<b>supporting</b> 4:18	<b>thing</b> 3:21	<b>translator</b> 12:3	<b>used</b> 7:6	<b>Waclaw</b> 3:19
	<b>things</b> 10:18	<b>transportatio</b> <b>n</b> 1:4 9:17	<b>uses</b> 9:17	<b>wait</b> 4:6
	<b>thrive</b> 5:1		<b>using</b> 8:11	<b>walk</b> 6:5 13:12
	<b>through</b> 2:21, 22 4:21 6:5 11:6			

<b>want</b> 2:24 3:7, 13,21,24 4:13,14 12:2, 8,23	<b>work</b> 9:16	
	<b>working</b> 7:6, 11 10:2	
<b>wanted</b> 11:14	<hr/> <b>Y</b> <hr/>	
<b>way</b> 2:7 14:13		
<b>ways</b> 6:7	<b>year</b> 11:7,9	
<b>Welcome</b> 2:10 6:10	<b>years</b> 12:17, 22	
<b>west</b> 14:1	<b>Yet</b> 12:23	
<b>whimsy</b> 14:11		
<b>widening</b> 9:13		
<b>will</b> 3:22 4:3, 21 6:4,19 7:3, 5,7,15 8:8,11, 15 9:23 10:4 11:7 13:15		
<b>win</b> 4:18		
<b>Wingfield</b> 8:2, 18 10:10 13:13,23 14:7,9		
<b>without</b> 6:3 12:18 13:14, 24		