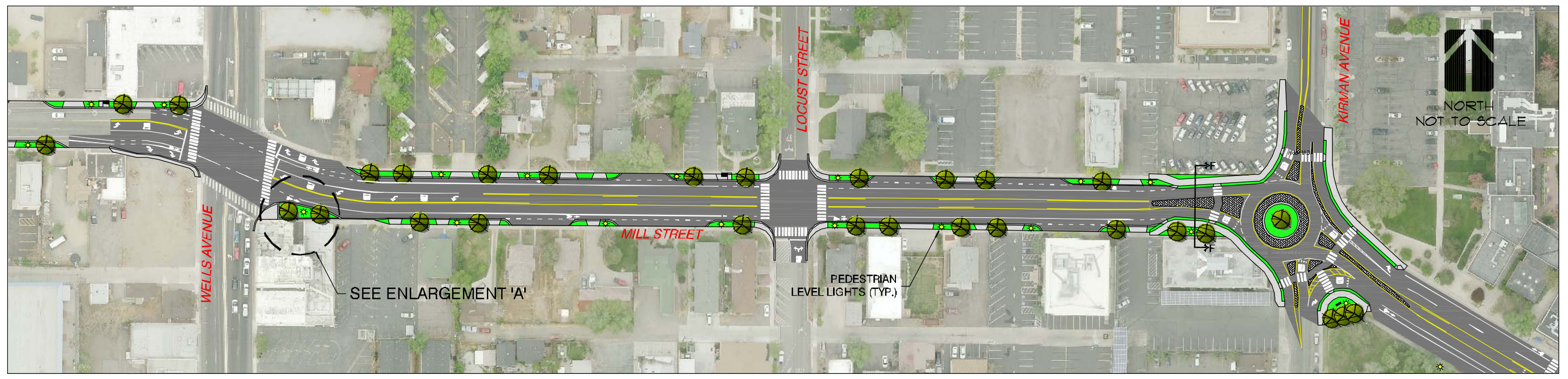
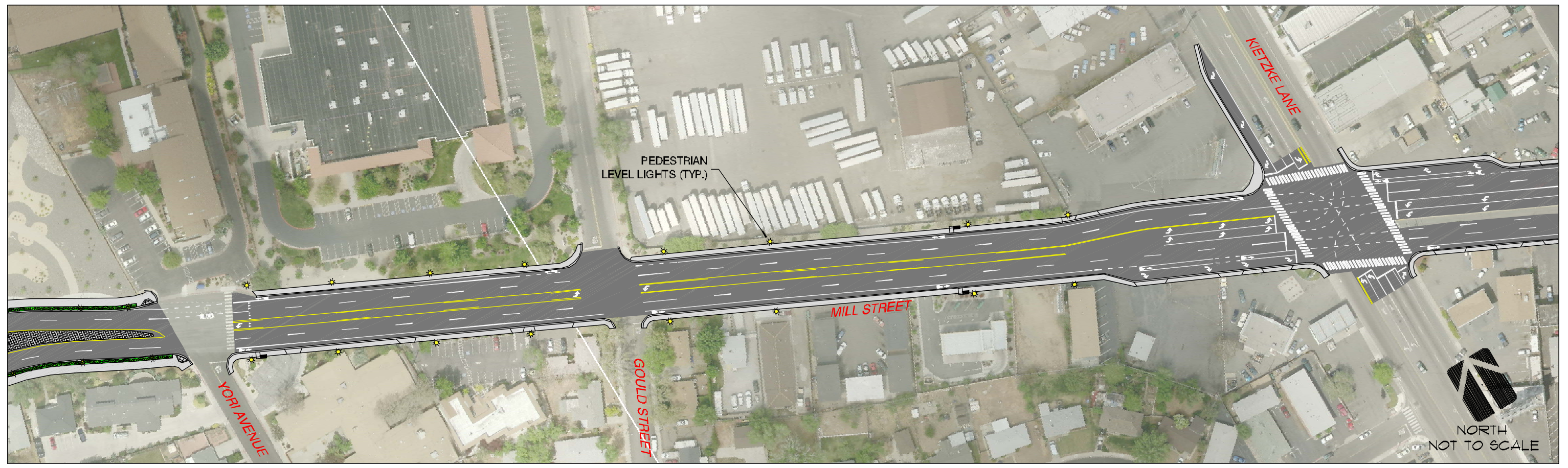
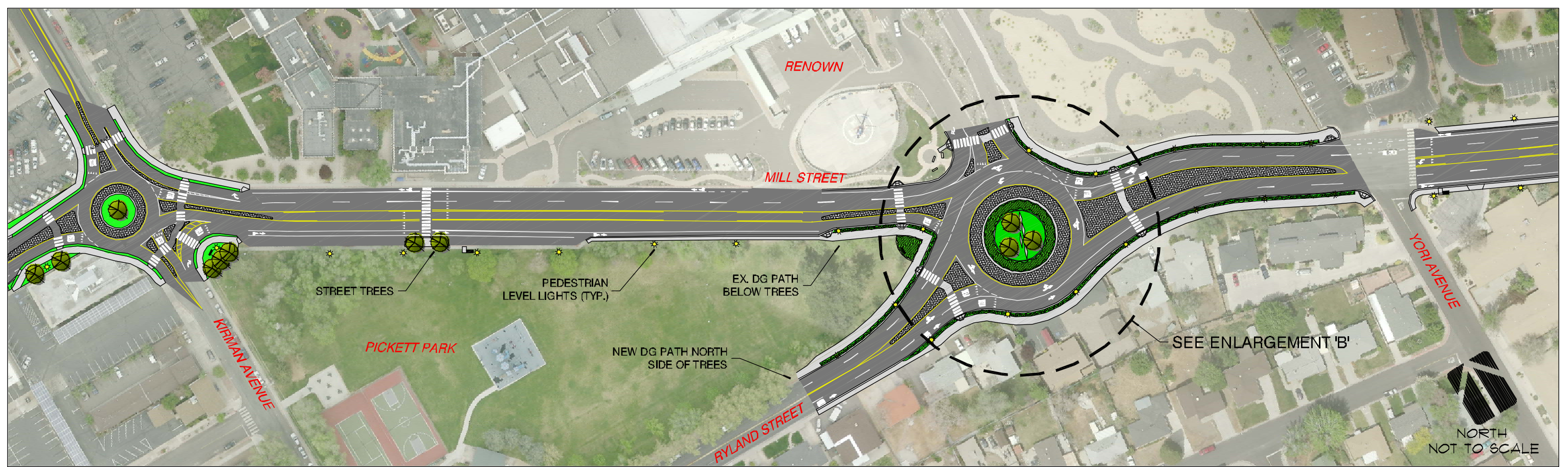


**APPENDIX D**  
**LANDSCAPE ARCHITECTURE/TREE & PLANT LIST**

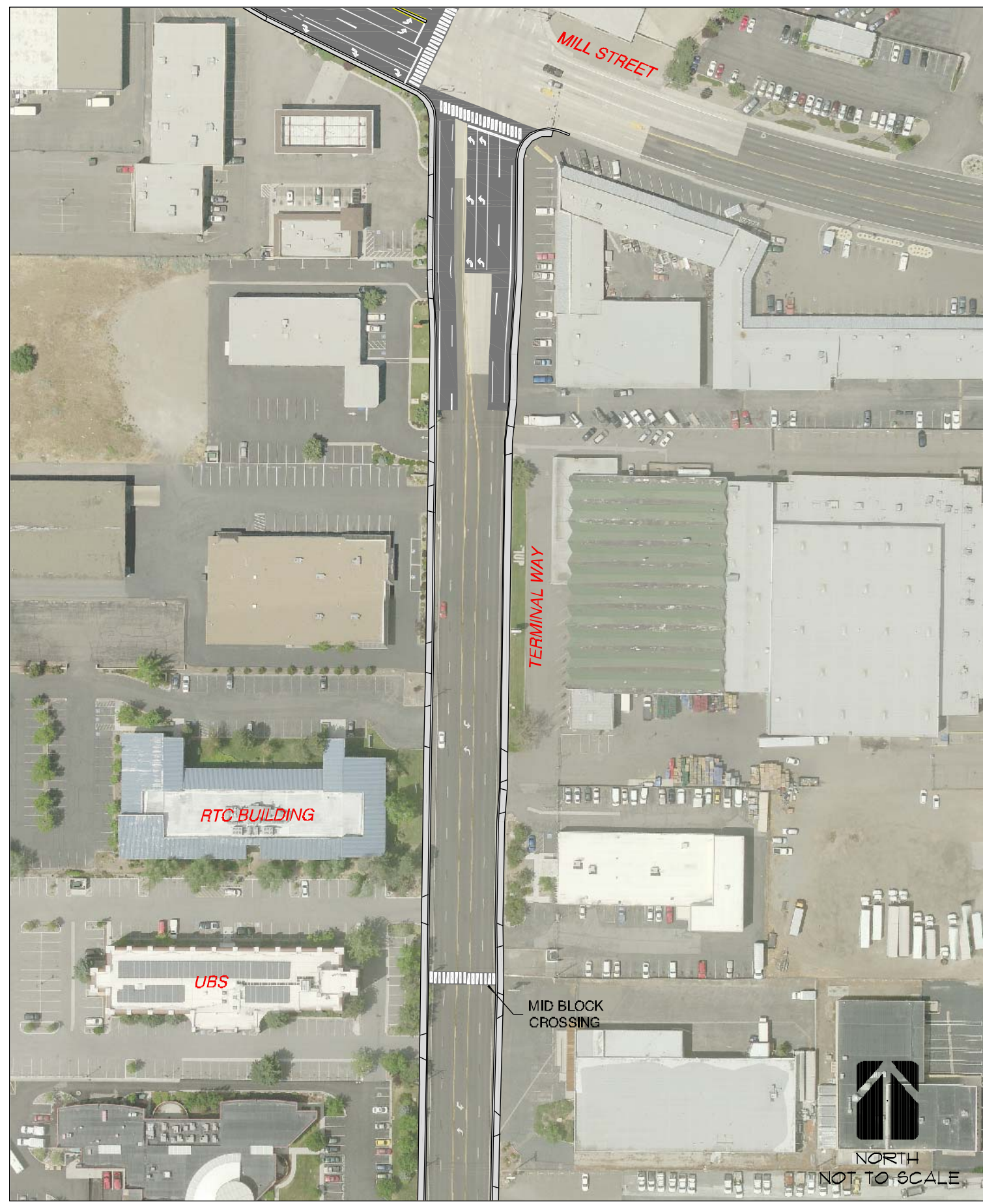








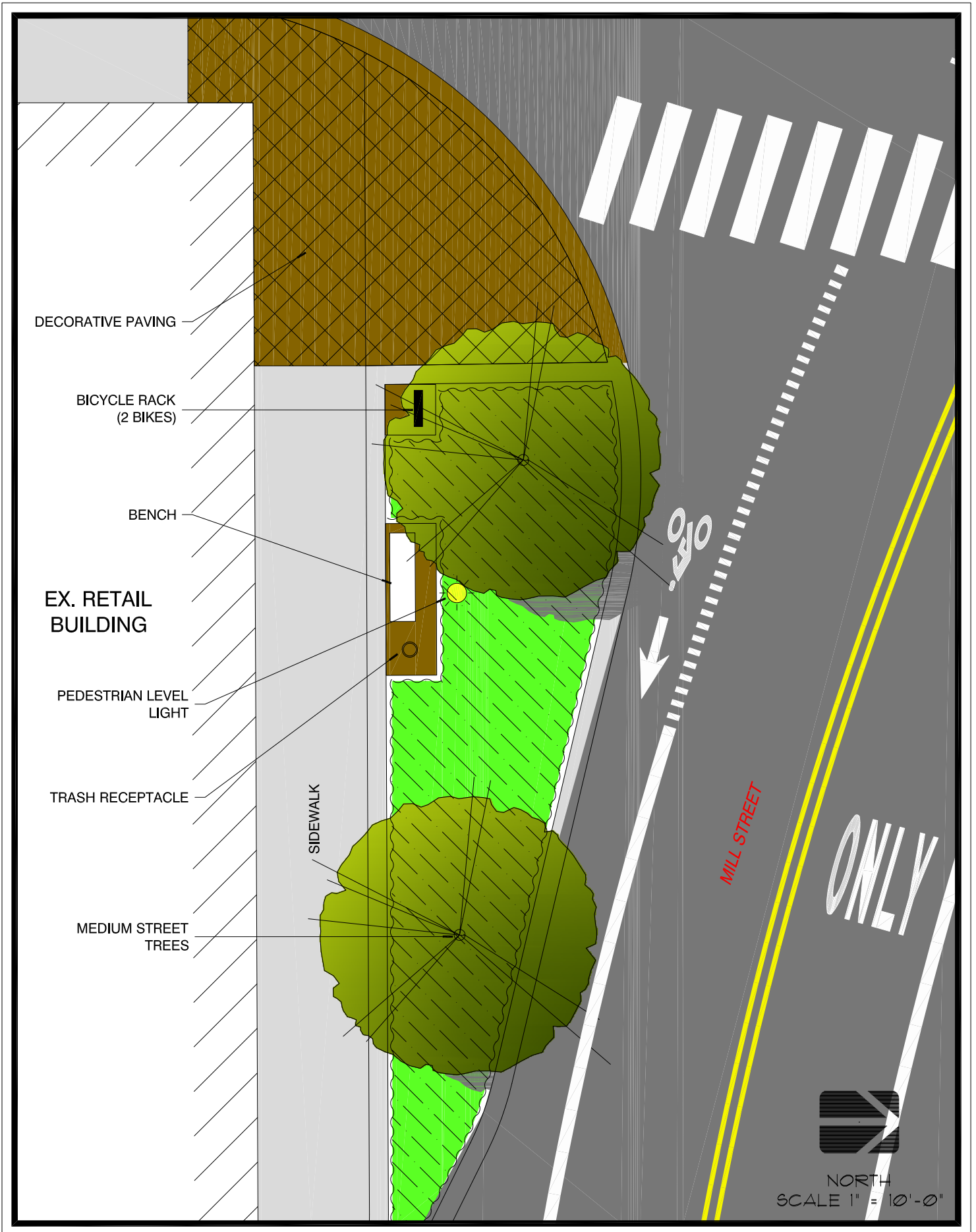




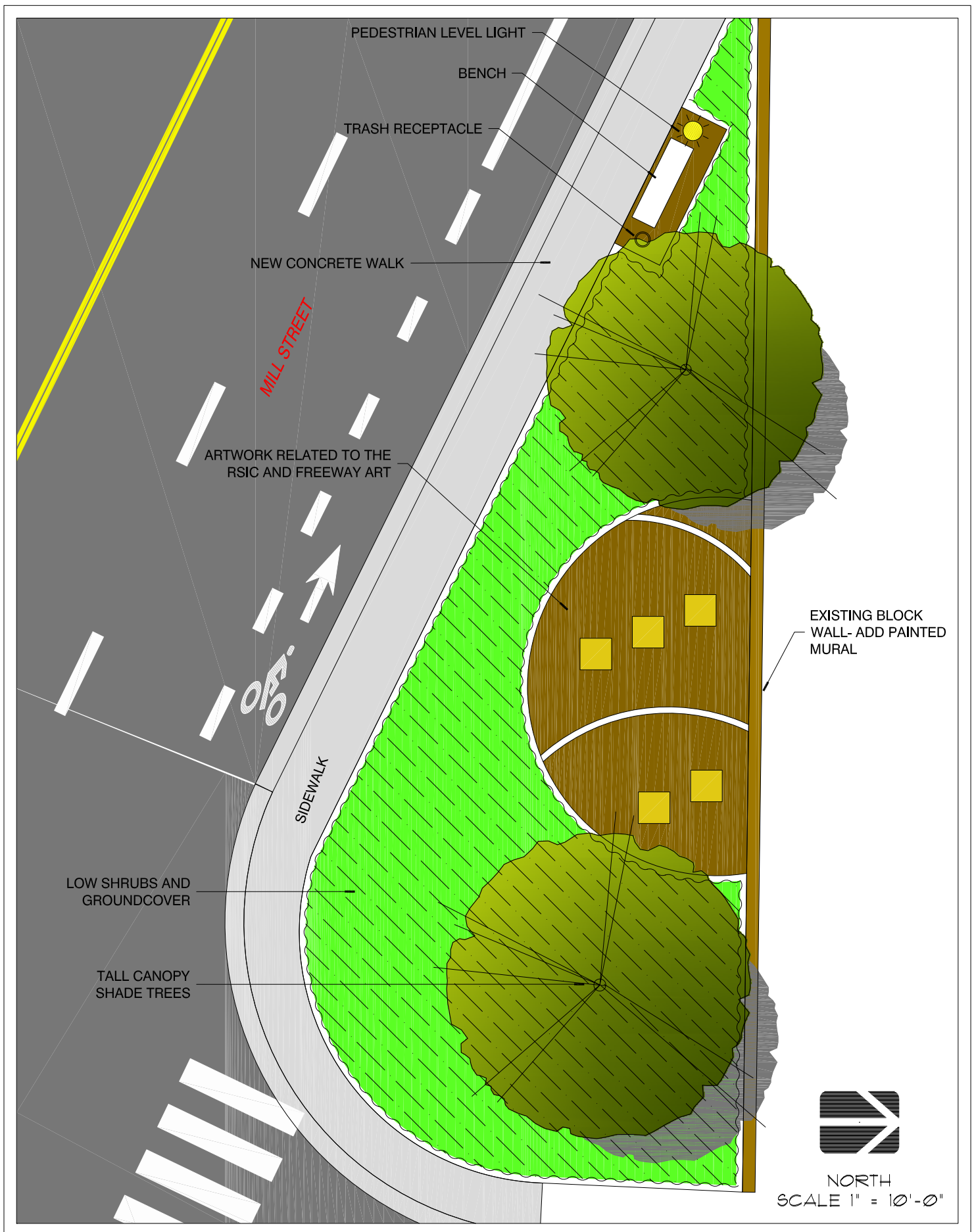




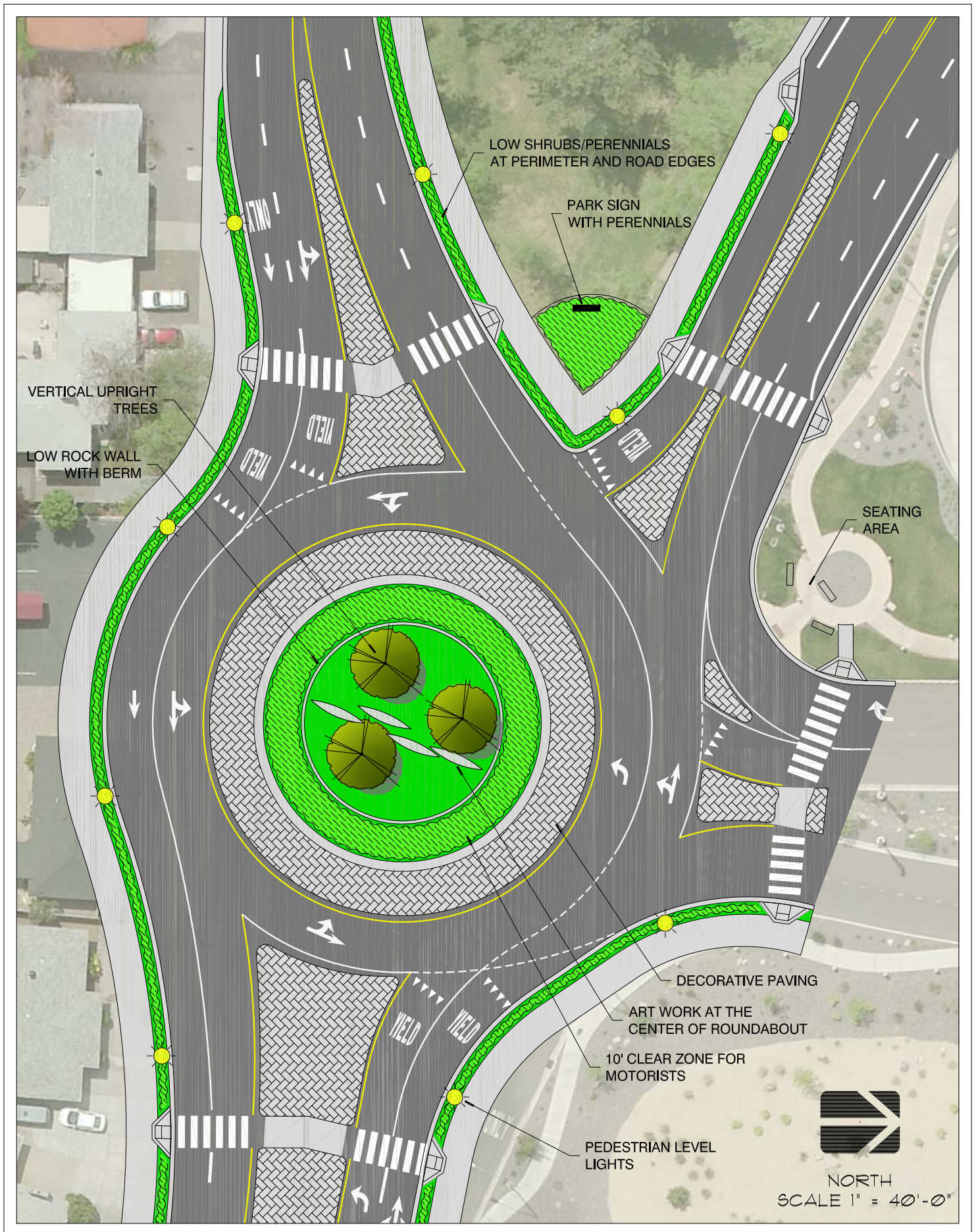




ENLARGEMENT 'A'



ENLARGEMENT 'C'



ENLARGEMENT 'B'



# Mill Street Tree and Plant List

## Ornamental Grasses

1. Calamagrostis 'Overdam'- Feather Reed Grass
2. Festuca glauca 'Sea Urchin' – Sea Urchin Blue Fescue
3. Miscanthus sinensis 'Silberfeder'- Silver feather maiden hair
4. Nassella tenuissima – Mexican Feather Grass
5. Panicum virgatum 'Northwind' – Northwind Switchgrass
6. Pennisetum alopecuroides 'Hameln' – Dwarf Fountain Grass

## Perennials and ground covers

1. Salvia superb 'East Friesland', 'Lubecca', 'Blue Hill' and 'Snow Hill'.
2. Veronica 'Sunny Border Blue' – Blue Speedwell
3. Coreopsis verticillata 'Moonbeam' – Threadleaf Coreopsis
4. Coreopsis grandiflora 'Early Sunrise' – Yellow Coreopsis
5. Centranthus ruber 'Coccineus' – Red Valerian
6. Achillea 'Moonshine' – Moonshine Yarrow
7. Achillea 'Coronation Gold' – Coronation Gold Yarrow
8. Rudbeckia fulgida 'Goldsturm' – Black-eyed Susan
9. Sedum 'Autumn Joy' – Autumn Joy Sedum
10. Partenocissus quinquefolia - Virginia Creeper
11. Artemesia 'Powis Castle' - Powis Castle Artemesia

## Shrubs

1. Berberis thunbergii 'Atropurpurea' - Red-leaf Barberry'
2. Rhus aromatic "Lowgrow" – Dwarf fragrant sumac
3. Ribes aureum - Golden Current
4. Photinia fraseri - Fraser's Photinia
5. Cornus stolonifera 'Isanti' - Dwarf Dogwood
6. Physocarpus opulifolius intermedius 'Summer Wine' - Summer wine Ninebark
7. Fallugia paradoxa - Apache Plume
8. Cercocarpus ledifolius - Mountain Mahogany
9. Yucca flaccida – Soapweed
10. Chamaebutiera millifolium – Fernbush
11. Lavendula angustifolia 'Hidcoat Superior' - Hidcoat English Lavendar
12. Berberis thunbergii - lt. green or pink var.
13. Lonicera xylosteum 'Emerald Mound' – Emerald Mound Honeysuckle
14. Spiraea bumalda 'Anthony Waterer' – Anthony Waterer Spiraea
15. Kniphofia uvaria – Red Hot Poker



16. *Caryopteris clandonensis* 'Dark Knight' – Blue Mist Spiraea
17. *Artemisia* 'Powis Castle' – Powis Castle Artemesia
18. *Rosa* 'Meidiland' - Meidiland Rose – Scarlet, pink and white colors
19. *Potenilla fruticosa* ' Katherine Dykes' - Yellow flower Cinquefoil
20. *Helictotrichon sempervirens* - Blue Oat grass
21. *Rudbeckia fulgida* - Black-eyed Susan

## Trees

1. *Fraxinus Americana* 'Autumn Purple' – Autumn Purple Ash
2. *Celtis occidentalis* – Western Hackberry
3. *Quercus rubra* - Red Oak
4. *Cotinus coggygia* 'Purpureus' – Purple Smoke Tree
5. *Koelreuteria paniculata* - Golden Rain Tree
6. *Pistacia chinensis* - Chinese Pistache Tree
7. *Quercus robur* - Upright English Oak
8. *Juniperus chinensis* 'Skyrocket' - Skyrocket Juniper
9. *Acer ginnala* – Amur Maple
10. *Acer rubrum* 'Armstrong' – Armstrong Maple
11. *Carpinus betulus* – European Hornbeam
12. *Carpinus betulus*'Frans Fontaine'- Frans Fontaine Hornbeam
13. *Gleditsia triacanthos* 'Shademaster' – Shademaster Honeylocust
14. Northern Catalpa – *Catalpa speciosa*
15. *Platanus acerfolia* 'Bloodgood' – Bloodgood London Plane Tree
16. *Liquidambar styraciflua* 'Moraine' - Moraine Sweetgum
17. *Pyrus calleryana* 'Capital' – Capital Pear