



REGIONAL TRANSPORTATION COMMISSION

Metropolitan Planning • Public Transportation & Operations • Engineering & Construction

Metropolitan Planning Organization of Washoe County, Nevada

Washoe County Critical Urban Freight Corridors

November 17, 2022



CUFC DEFINITION

Public roads in urbanized areas which provide access and connection to the Primary Highway Freight System (PHFS) and the Interstate. The PHFS is a network of highways identified as the most critical highway portions of the U.S. freight transportation system determined by measurable and objective national data.





CUFC DESIGNATION



- **Bipartisan Infrastructure Law (BIL) provided for additional 75 miles of CUFC statewide (total of 150 miles).**
- **CUFC network based on where freight traffic is occurring or anticipated to occur – not a “truck route” to direct traffic.**
- **CUFC designation does not provide additional funding.**
- **Proposed network aligned with planned projects to prioritize funding and potential grant opportunities.**

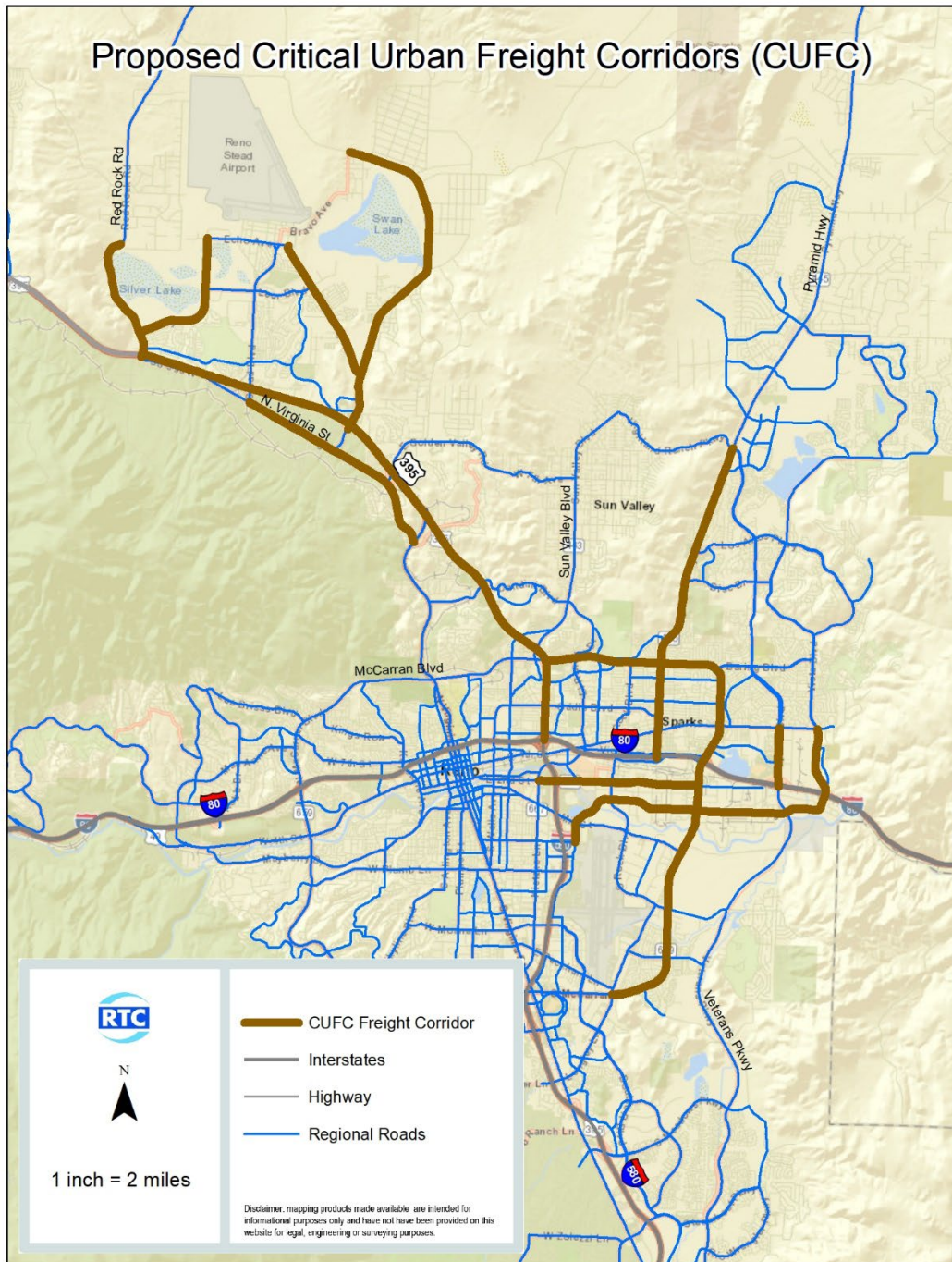


PROPOSED WASHOE COUNTY CUFC NETWORK

ROADWAY	FROM	TO
US 395	Red Rock Rd	I-80
Pyramid Way	Sparks Blvd	McCarran Blvd
McCarran Blvd	US 395	Greg St
Sparks Blvd	I-80	Prater Way
Vista Blvd	Greg St	Prater Way
Glendale Ave	Kietzke Ln	McCarran Blvd
Greg St	Mill St	Vista Blvd
Terminal Way	Vassar St	Mill St
Moya Blvd	Red Rock Rd	Echo Ave
Lemmon Dr	US 395	Ramsey Way
Military Rd	Lemmon Dr	Echo Ave
N. Virginia St	Panther Dr	Stead Blvd
Glendale Ave	Kietzke Ln	McCarran Blvd
Pyramid Way	McCarran Blvd	I-80
McCarran Blvd	Longley Ln	Greg St



Proposed Critical Urban Freight Corridors (CUFC)





NEXT STEPS

- **Provide NDOT with recommendations for network.**
- **Identify critical projects for the freight investment plan.**
- **NDOT to submit updates to the Nevada Freight Plan to FHWA for approval.**





THANK YOU

Dan Doenges, PTP, RSP
Director of Planning

Regional Transportation Commission
of Washoe County

ddoenges@rtcwashoe.com

Building A Better Community Through Quality Transportation
rtcwashoe.com

