

Scope of Services

South Virginia Street Transit Oriented Development Study

Introduction:

The Regional Transportation Commission of Washoe County (RTC), in partnership with the City of Reno, has been awarded a federal planning grant to complete a Transit Oriented Development (TOD) study along the South Virginia Street corridor. This corridor includes large tracts of vacant or underutilized land and lacks full sidewalk and bicycle connectivity. Much of the existing development is vehicle-dependent with limited mobility and affordable housing options. However, the potential exists to create a direct connection to Midtown, Downtown, and the University of Nevada, Reno to enhance economic development opportunities and encourage a more balanced jobs-housing mix that is conducive to enhanced transit. The purpose of the study is to envision the future extension of the Virginia Line Bus Rapid Transit (BRT) service to South Reno and develop the land use planning tools that will encourage a walkable, transit-supportive development pattern that meets the growth and development needs of the region. The study will focus on identifying optimal land use policies that will enhance economic development and facilitate connectivity and accessibility. The study area, shown in the map on the following page, extends from the BRT route's current southern terminus at the Meadowood Mall transfer station to the south end of the Virginia Street corridor.

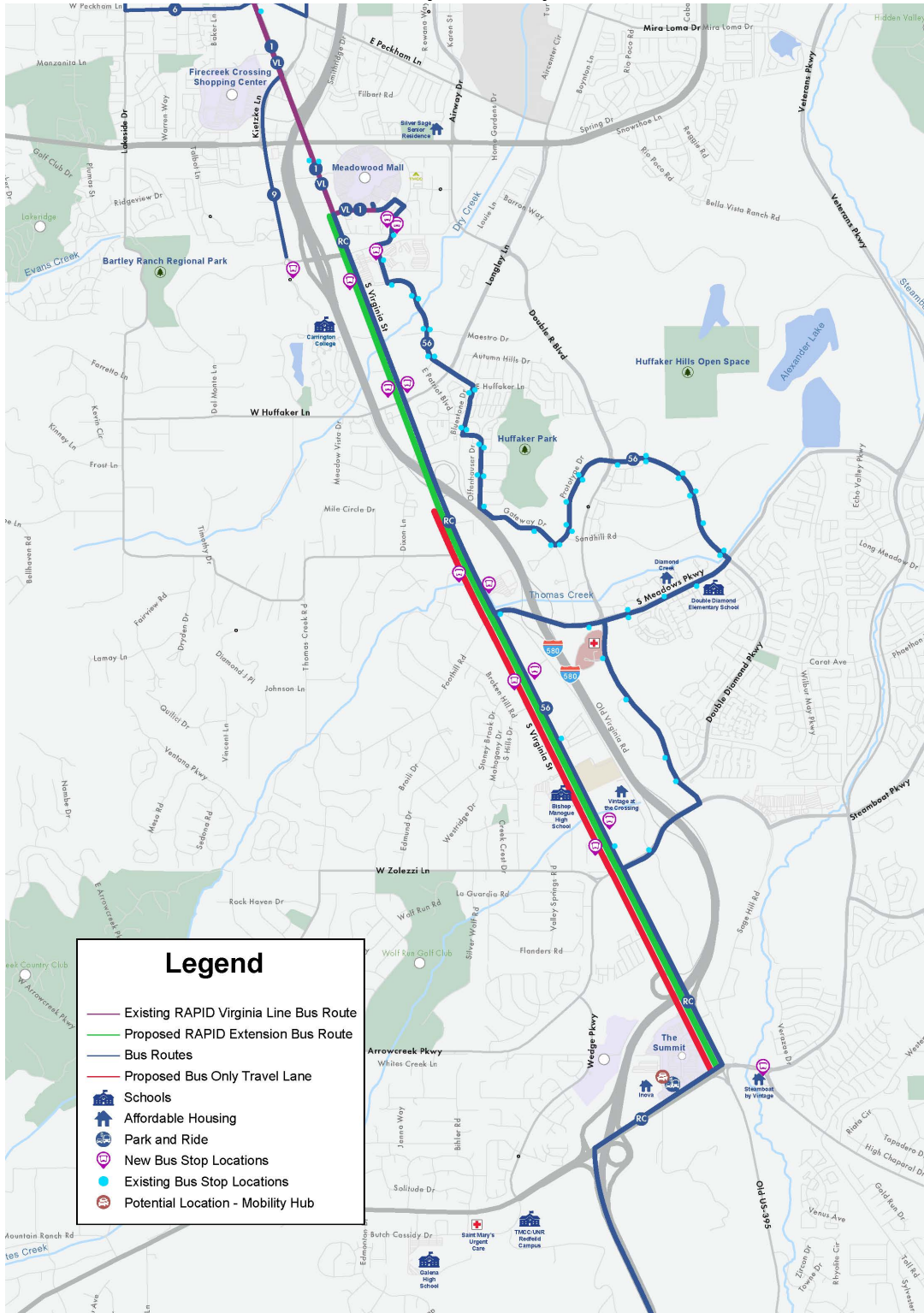
Objective:

The study will seek to build community consensus around land use and infrastructure to allow BRT service to succeed within the study area. Through robust community and developer involvement in the process, the plan will establish a vision that has the support of local residents and provide the land use tools needed by local governments to implement these strategies. Further, it will advance TOD by identifying the pattern and form of development needed to support BRT. It will recommend appropriate multimodal infrastructure to facilitate safe accessibility to surrounding land uses with the desired outcome of expanding access to opportunity for low income residents and reducing automobile dependency. Ultimately, this study will identify a strategy that supports increased density, affordable housing, and mix of land uses that will encourage safe and expanded transportation options.

Project Tasks:

The study's work plan includes the following tasks, which will assist the RTC and City of Reno in defining the integrated transportation investments and land use planning tools that will transform South Virginia Street into a safe, vibrant, and transit supportive corridor.

Study Area Map



Legend

- Existing RAPID Virginia Line Bus Route
- Proposed RAPID Extension Bus Route
- Bus Routes
- Proposed Bus Only Travel Lane
- Schools
- Affordable Housing
- Park and Ride
- New Bus Stop Locations
- Existing Bus Stop Locations
- Potential Location - Mobility Hub

Task 1: Project Management

- 1.1 Invoicing and Progress Reports – Prepare monthly progress reports, invoices, and resolve other billing and logistical issues.
- 1.2 Coordination – An initial meeting with RTC and City of Reno will be organized to establish study goals and objectives. Coordination with the RTC project management team will be ongoing throughout the project. It is anticipated that the consultant will agendaize and record regularly scheduled meetings with the project management team. These meetings may be conducted virtually.
- 1.3 Management Plan – Identify a team organizational structure and anticipated steps and processes required to complete the study. This will include a project schedule and budget for each task with corresponding deliverables and progress reports.

Task 2: Land Use Vision, Plan & Tools

- 2.1 Existing Studies – Review existing transit and land use development studies that are relevant to the study area and incorporate them into the analyses conducted as part of Task 2.
- 2.2 Land Use Analysis – Collect information about zoning, current land use, and planned development, including area schools, major commercial, industrial, and residential developments. Consider the impact of areas with a higher proportion of low-income and minority residents and residents with limited English proficiency compared to the county as a whole. Coordinate with the Truckee Meadows Regional Planning Agency (TMRPA) to update information about proposed developments in the area. Coordinate with Washoe County School District and major land use developments that have the potential to significantly impact the travel demand or traffic operations in the study area. Develop a memo to document all land use changes compared with the TMRPA 2020 consensus forecast, which was used in the RTC's travel demand model. Provide a summary that can be used by the RTC to update the travel demand model land use data and reflect the development forecasts. Travel demand modeling will be conducted by the RTC, and model results will be provided to the consultant for analysis and study recommendations.
- 2.3 Transit Analysis – Document existing transit service and ridership trends in the immediate study area. Coordinate with the RTC Public Transportation and Operations Department to identify future transit service needs, potential improvements, and park and ride options. Review identified BRT station locations, proposed mobility hub site alternatives and bus-only lane, and other operational needs such as connections to the existing BRT line and traffic signal prioritization. Work with RTC staff to develop forecast ridership estimates along the study corridor. Develop planning level traffic impact assessment of proposed bus-only travel lane.
- 2.4 Safety Analysis – Collect available crash statistics, including bicycle and pedestrian related crashes. Analyze contributing factors and potential safety issues, such as lighting, speed,

infrastructure, and roadside hazards, that may inhibit successful implementation of BRT and enhanced multimodal operations.

- 2.5 Corridor Vision – Building off existing plans and community engagement (discussed in Task 4), create a vision that will support regional goals. Enhancing accessibility, safety, and economic vitality are some of the goals that should be included as fundamental building blocks of the visioning process. The vision statement should incorporate the character and form of development desired by the community and define associated goals and objectives that support BRT.
- 2.6 Land Use Planning Tools – Develop planning tools to assist local agencies in implementing the community vision for the corridor. Create a plan beyond the vision to include strategies and other guidelines for realizing success. Enable evolution of the corridor and encourage transit supportive development.

Task 3: Multimodal Planning to Support Transit

- 3.1 Data Collection and Inventory – Collect data on bicycle and pedestrian facilities within, and providing direct access to, the study corridor. Highlight those connecting to existing or planned transit stops. Include data specific to ADA accessibility.
- 3.2 Improvement Recommendations – Develop and evaluate alternatives for transit and bicycle and pedestrian improvements that support the proposed BRT extension. Consider, at a planning level, changes to FlexRIDE service, park and ride lots, sidewalks, bicycle lanes, multi-use paths, potential mobility hubs, and streetscapes. Incorporate improvements that provide safe access to transit facilities and enhance operational efficiencies, accounting for the many interfaces between modes within the corridor.

Task 4: Community Engagement

- 4.1 Project Technical Advisory Committee (TAC) Meetings – Facilitate up to five (5) project TAC meetings that will be held during the planning study to review study issues and results. These meetings will include a mix of in-person and online formats.
- 4.2 Public Information Meetings/Planning Workshops – Facilitate up to four (4) public information meetings, virtually, in-person, or a combination thereof. Meetings will target community groups, the private sector, general public, and other partner agencies. These meetings will include presentations, visioning, and/or surveys to generate multifaceted and comprehensive public comment.
- 4.3 Agency Meetings – Present the project at community and stakeholder meetings including WARD 2 Neighborhood Advisory Board (NAB) and South Truckee Meadows/Washoe Valley Citizens Advisory Board (CAB) meetings.

- 4.4 RTC Technical Advisory Committee (RTC TAC) and Citizens Multimodal Advisory Committee (CMAC) Meetings – Make two presentations to the RTC TAC and CMAC (up to four meetings total).

Task 5: Report Preparation

- 5.1. Draft Report – Prepare draft report, including graphics and illustrations of alternatives, with the understanding that the final phase of Task 4 will incorporate presentation of the draft report to public and private sector groups and individuals. Comments received will be combined with those received from the RTC, stakeholders, and advisory committees and incorporated into the final report.
- 5.2 Final Report – The final report will include design alternatives, recommended improvements, and planning level cost estimates with associated maps, graphics, survey results, and other relevant materials produced during the course of the study.

Deliverables

1. Meeting materials and displays for public, stakeholder, and RTC TAC/CMAC/Board meetings.
2. Provide an electronic copy of the draft report to the RTC for review and distribution as well as any supporting documentation/data (GIS shapefiles, presentations, exhibits, etc.).
3. Provide an electronic copy of the final report as well as any supporting documentation/data (GIS shapefiles, presentations, exhibits, etc.).

Project Milestones:

- Project kick-off including coordination between RTC, the City of Reno, and TAC – Month 1
- Planning Workshop #1 – Month 5
- Planning Workshop #2 – Month 8
- Draft Report – Month 9
- Final Report – Month 11