



REGIONAL TRANSPORTATION COMMISSION

Metropolitan Planning • Public Transportation & Operations • Engineering & Construction

Metropolitan Planning Organization of Washoe County, Nevada

September 18, 2020

AGENDA ITEM 5.1

TO: Regional Transportation Commission

FROM: Daniel Doenges, PTP, RSP
Planning Manager



Bill Thomas, AICP
Executive Director

SUBJECT: Eagle Canyon Extension Alignment Alternatives and Planning and Environmental Linkages (PEL) Study

RECOMMENDATION

Receive a report and provide direction on the Eagle Canyon Extension Alignment Alternatives and Planning and Environmental Linkages (PEL) Study.

SUMMARY

The purpose of this study is to identify potential alignments for and evaluate the feasibility of a proposed new roadway, which would provide a connection between the North Valleys (Lemmon Valley) and Spanish Springs communities, as well as to identify potential improvements to existing Eagle Canyon Drive. The final report will provide the necessary background information to advance a future project through the National Environmental Policy Act (NEPA) process and design as well as to establish a foundation for the coordination of future planning efforts among stakeholders within the corridor. Should a feasible alignment be identified, potential funding resources will be evaluated at a later date.

With the assistance of a consultant team, RTC staff was able to gather traffic operations data on Eagle Canyon Drive between Pyramid Way and W. Calle de la Plata, including traffic volumes and observations of school period activity, prior to the COVID-19 pandemic shutdown. Data was also collected on the roadway characteristics of Eagle Canyon Drive, and recommendations for potential improvements will be included in the final report.

Concurrently, the project team modeled potential roadway alignments between Lemmon Valley and Spanish Springs, which took into account such factors as potential impacts to wildlife species, environmental justice considerations, wetland avoidance, park and recreation areas, and land ownership. The team also held several meetings with a project technical advisory committee (TAC) to gather agency and stakeholder input. In addition, public meetings were held in the communities of Lemmon Valley and Spanish Springs prior to the pandemic, and an online survey was made available to gather public comment.

Based on the results of the data collection, preliminary environmental analysis, and TAC and public comments, the initial number of potential alternatives has been consolidated to essentially two corridors with potential variations in the connection points. Potential alignments include a connection from Eagle Canyon Drive to Lemmon Drive (in the vicinity of Chickadee Drive) with a possible alternative connection via Sha Neva Road to Lemmon Drive, and from Lazy 5 Parkway to Lemmon Drive via Deodar Way with a possible alternative connection to Lemmon Drive via the northerly Chickadee Drive route. These alignments can be seen in the attached exhibit. Staff is seeking Board input for further evaluation of the alignment alternatives and overall study, which will be incorporated into the final report. It is anticipated that there will be at least one more project TAC meeting to discuss the alternatives as presented and public outreach will resume once a draft report is available for review.

FISCAL IMPACT

Funding for the Eagle Canyon Extension Alignment Alternatives and PEL Study is included in the FY 2020 – FY 2021 Unified Planning Work Program (UPWP).

PREVIOUS ACTIONS BY BOARD

August 16, 2019	Approved the Professional Services Agreement (PSA) for the Eagle Canyon Extension Alignment Alternatives and PEL Study
May 20, 2019	Approved the FY 2020 – FY 2021 UPWP

ADDITIONAL BACKGROUND

The purpose and need for this study arose from the North Valleys Multimodal Transportation Study completed by the RTC in February 2017. Through that process, North Valleys residents expressed a desire for a direct connection between Lemmon Valley and Spanish Springs as both communities have been experiencing significant growth in housing and employment.









The proposed roadway would help improve regional traffic flow. The construction of the Eagle Canyon Extension is identified in the RTC 2040 Regional Transportation Plan (RTP) within the 2027-2040 timeframe. Concerns regarding traffic operations on Eagle Canyon Road were identified during the 2040 RTP process and will be addressed through this study.

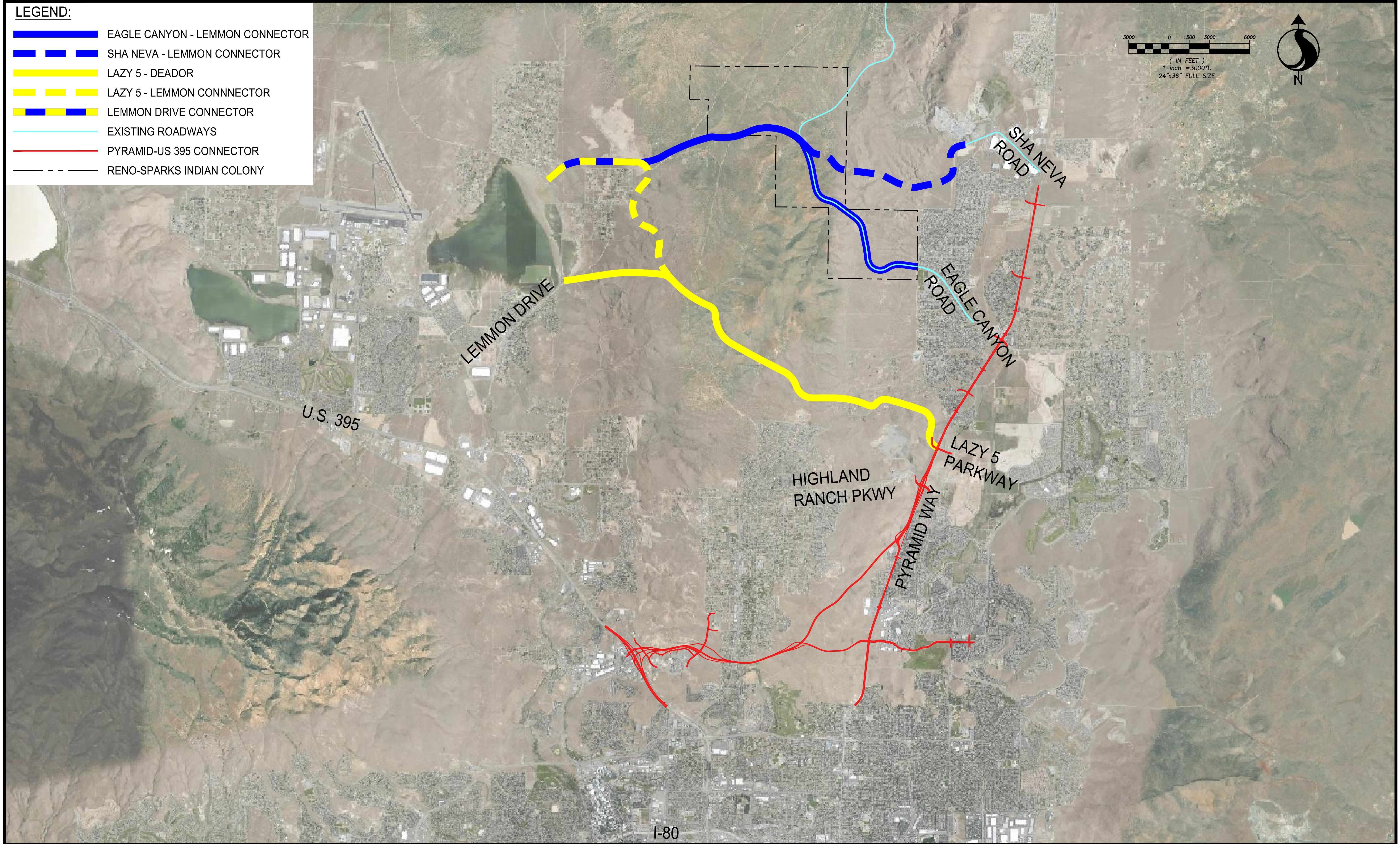
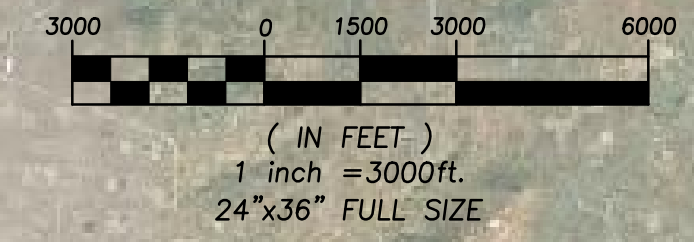
ADVISORY COMMITTEE(S) RECOMMENDATION

There are no advisory committee recommendations pertaining to this report.

Attachment

LEGEND:

-  EAGLE CANYON - LEMMON CONNECTOR
-  SHA NEVA - LEMMON CONNECTOR
-  LAZY 5 - DEADOR
-  LAZY 5 - LEMMON CONNNECTOR
-  LEMMON DRIVE CONNECTOR
-  EXISTING ROADWAYS
-  PYRAMID-US 395 CONNECTOR
-  RENO-SPARKS INDIAN COLONY



EAGLE CANYON ALIGNMENT STUDY

POTENTIAL CORRIDORS

