



REGIONAL TRANSPORTATION COMMISSION

Metropolitan Planning • Public Transportation & Operations • Engineering & Construction

Metropolitan Planning Organization of Washoe County, Nevada

April 19, 2019

AGENDA ITEM 3.5

TO: Regional Transportation Commission

FROM: David F. Jickling
Director of Public Transportation and Operations


Lee G. Gibson, AICP
Executive Director

SUBJECT: RTC Public Transportation and Operations Report

RECOMMENDATION

Acknowledge receipt of the monthly Public Transportation and Operations Report.

HIGHLIGHTS



16th Annual St. Patrick's Day Safe RIDE Program

The RTC through the generous support of its contributing sponsors: Atkins, CA Group, Inc., HDR, NCE and Sierra Nevada Construction; and partners LAMAR Advertising, KOLO 8 News Now and Cumulus radio stations including News Talk 780 KOH, 95.5 The Vibe, Wild 102.9 and K-Bull 98.1 helped

people celebrate responsibly on St. Patrick's Day. This program, in its 16th year, provided safe transportation for people celebrating the holiday. Between 4pm to 2am, RTC RIDE provided 8,442 free rides.

RTC issues Notice to Proceed to Keolis

On March 28, 2019, RTC issued a Notice to Proceed to Keolis Transit Services, LLC to begin the transition and start-up activities to take over the operation and maintenance of the RTC RIDE's fixed route service effective July 1, 2019. The RTC has been meeting every two weeks with the Keolis transition team to ensure a successful implementation. RTC's current contractor, MV, is also working collaboratively with RTC and Keolis to maintain continuity in the service.



May 4, 2019, RTC RIDE Service Change

The upcoming RIDE service change focuses on improving the reliability of service on weekends, building on the schedule improvements made last October for weekday timetables, which significantly improved weekday on-time performance.

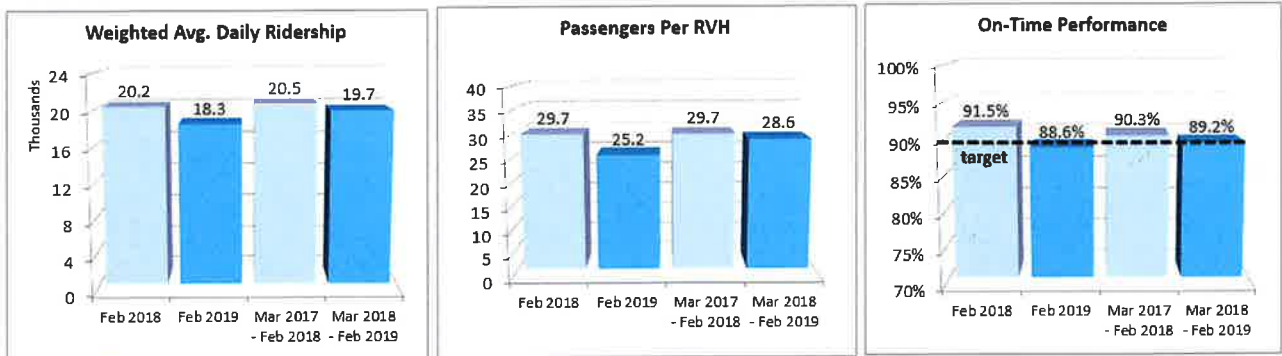
Transportation Demand Management Update (TDM)

- **Vanpools increased** from 157 to 164 with over 90 vans serving the Tahoe Reno Industrial Center (TRI). Staff provided information on the vanpool program and potential park-n-ride locations at the South Meadows public hearing on March 26th.
- **Transportation Management Association.** RTC staff participated in two events at Tesla on March 26th and 28th. Discussions are continuing with My Ride to Work, Storey County and EDAWN toward creating a Transportation Management Association at the Tahoe Reno Industrial Center.
- **Updated Smart Trips website.** The Smart Trips website has been completely revamped and now includes better vanpool matching services, as well as transportation options throughout the region. TripSpark, a national ridesharing website developer, is working on developing a Smart Trips App for both Google and Apple smart phones. The apps should be available by the end of April.
- **Smart Trips 2 Work program (ST2W)**
The RTC, in partnership with the Washoe County Health Department, is developing a voluntary trip reduction program designed to be a resource for businesses of all sizes to help reduce the number of single occupant vehicles (SOV's) during the morning and afternoon commute periods. The ST2W program is being designed to satisfy future Employee Trip Reduction (ETR) requirements should local jurisdictions choose to require this as a condition on new development projects. Staff will provide an overview of the program later in the agenda.

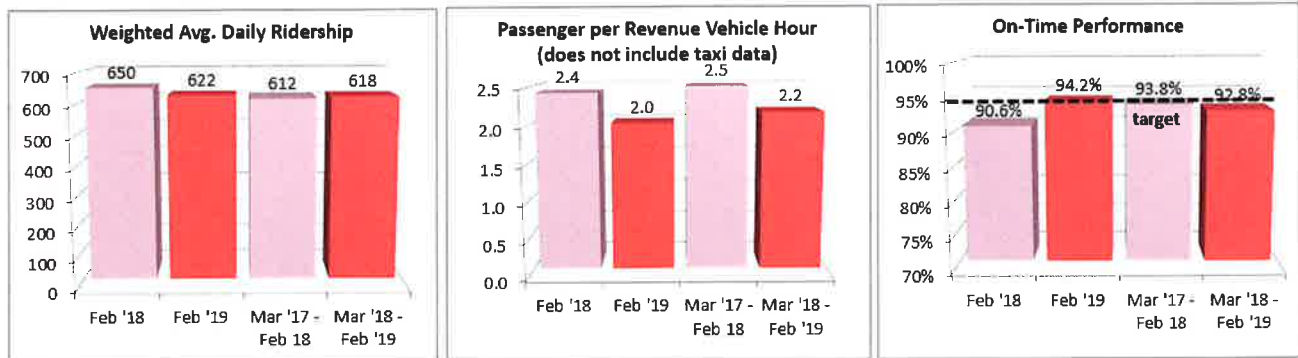


FEBRUARY 2019 TRANSIT PERFORMANCE

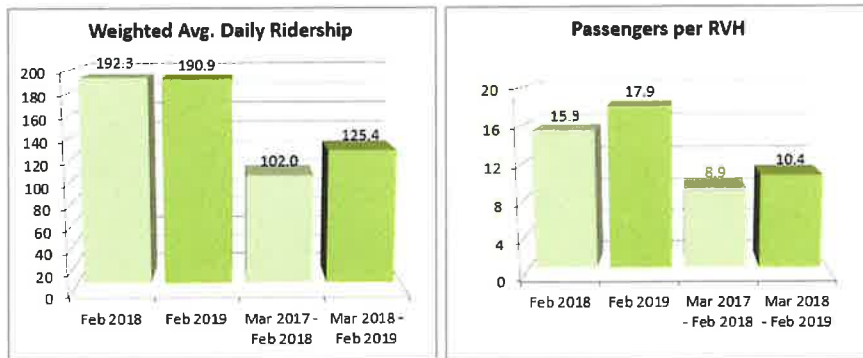
RTC RIDE



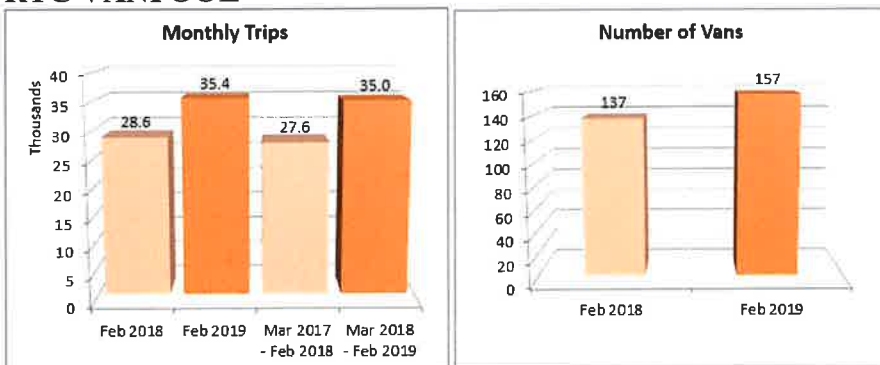
RTC ACCESS



TART



RTC VANPOOL



RTC Transit Performance Statistics¹

Performance Indicator	Current month compared with same month last year			Current 12-months compared with previous year		
	Feb 2019	Percent Change	Feb 2018	Mar 2018 - Feb 2019	Percent Change	Mar 2017 - Feb 2018
Monthly Ridership	511,189	-8.8%	560,505	7,149,630	-4.0%	7,444,399
Weighted Avg. Daily Ridership	18,257	-9.6%	20,198	19,741	-3.8%	20,529
Revenue Vehicle Hours (RVH)	20,322	7.7%	18,872	250,188	-0.3%	250,936
Passengers Per RVH	25.2	-15.3%	29.7	28.6	-3.7%	29.7
Revenue Vehicle Miles (RVM)	221,634	2.4%	216,357	2,809,132	-1.6%	2,853,965
Complaints Per 25,000 Trips	3.37	-27.9%	4.68	4.52	22.5%	3.69
Accidents per 100,000 Miles	2.71	-16.3%	3.24	4.24	35.8%	3.12
On-Time Performance ²	88.6%	-3.2%	91.5%	89.2%	-1.2%	90.3%

Performance Indicator	Feb 2019	Percent Change	Feb 2018	Mar 2018 - Feb 2019	Percent Change	Mar 2017 - Feb 2018
Revenue*	\$404,851	-6.9%	\$434,775	\$5,317,683	-6.5%	\$5,689,664
Farebox Recovery Ratio*	17.8%	-20.0%	22.3%	19.9%	-9.0%	21.9%
Subsidy per Passenger*	\$3.65	35.0%	\$2.70	\$2.99	9.6%	\$2.73

¹ RTC Transit includes RTC RIDE, RTC RAPID, RTC INTERCITY and SIERRA SPIRIT

² Percent of trips zero min. early and five minutes or less late

* - latest data

RTC ACCESS Performance Statistics

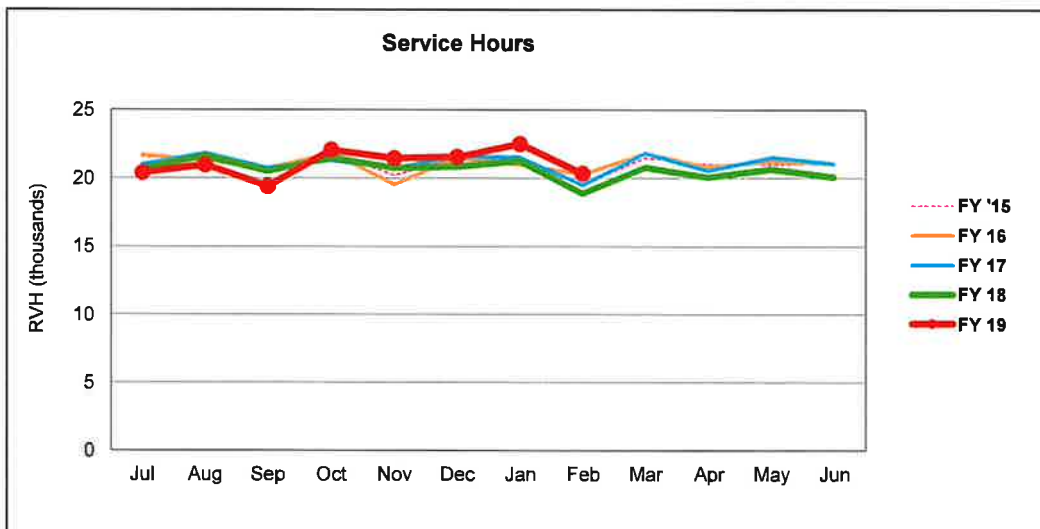
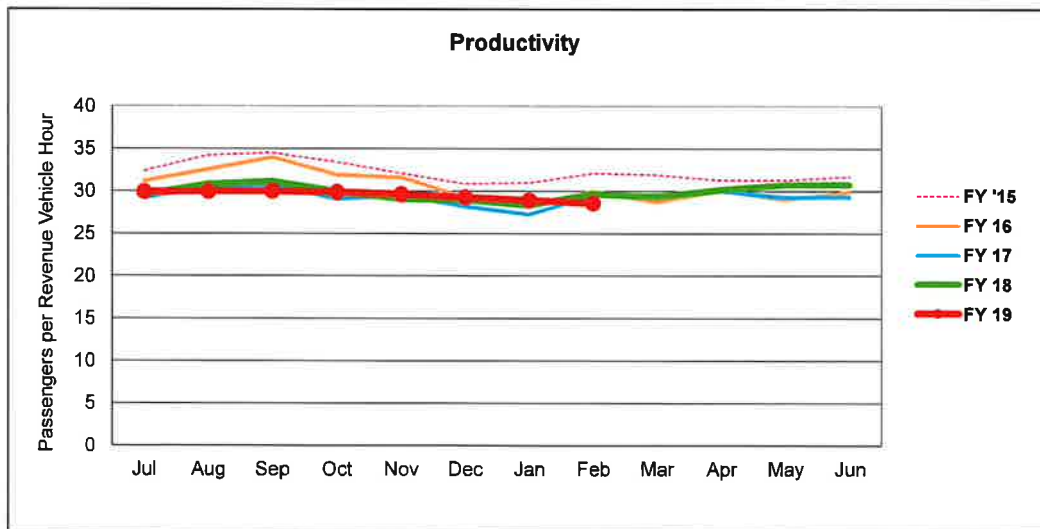
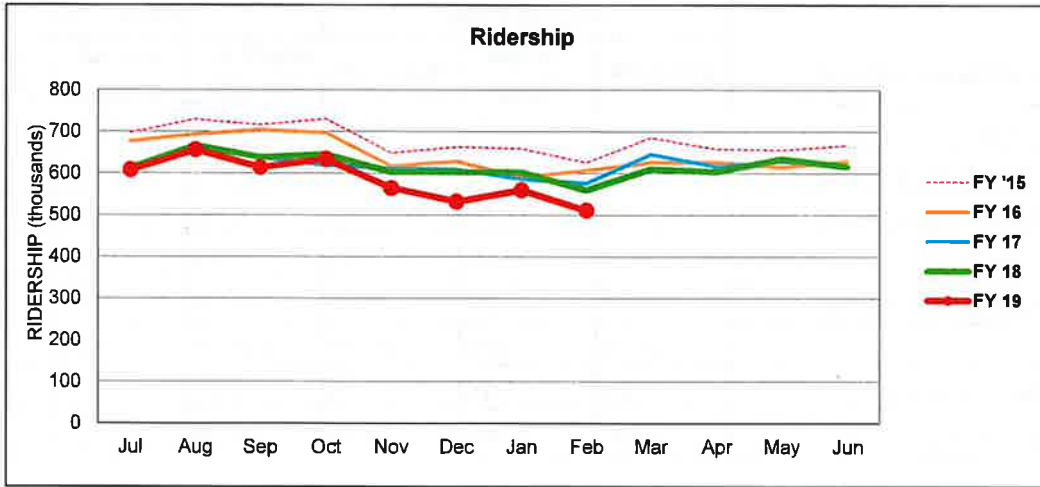
Performance Indicator	Current month compared with same month last year			Current 12-months compared with previous year		
	Feb '19	Percent Change	Feb '18	Mar '18 - Feb '19	Percent Change	Mar '17 - Feb 18
Monthly Ridership	16,906	-15.2%	19,938	236,287	-4.6%	247,690
Weighted Avg. Daily Ridership	622	-4.3%	650	618	1.0%	612
Revenue Vehicle Hours	8,423	15.5%	7,295	102,199	17.4%	87,046
Passenger per Revenue Vehicle Hour (does not include taxi data)	2.01	-17.1%	2.42	2.16	-13.5%	2.49
Revenue Vehicle Miles (RVM)	131,084	19.8%	109,379	1,613,694	9.4%	1,475,210
Complaints per 1,000 Rides	0.35	-41.0%	0.60	0.68	-7.8%	0.73
ADA Capacity Denials	0	0.0%	0	0	0.0%	0
Other Denials	0	-100.0%	2	7	-90.1%	71
Accidents per 100,000 Miles	2.29	#DIV/0!	0.00	0.61	-11.1%	0.69
On-Time Performance (does not include taxi data)	94.2%	4.0%	90.6%	92.8%	-1.0%	93.8%
Taxi On-Time Performance	0.0%	-100.0%	98.0%	84.0%	-13.3%	96.8%
Performance Indicator	Dec '18	Percent Change	Dec '17	July '18 - Dec '18	Percent Change	July '17 - Dec '17
Revenue*	\$173,122	3.0%	\$168,039	\$1,021,720	3.8%	\$984,775
Farebox Recovery Ratio*	26.91%	18.97%	22.62%	24.14%	11.81%	21.59%
Subsidy per Passenger*	\$17.49	-8.6%	\$19.14	\$19.18	-8.4%	\$20.93

*December 2018 data is the latest available.

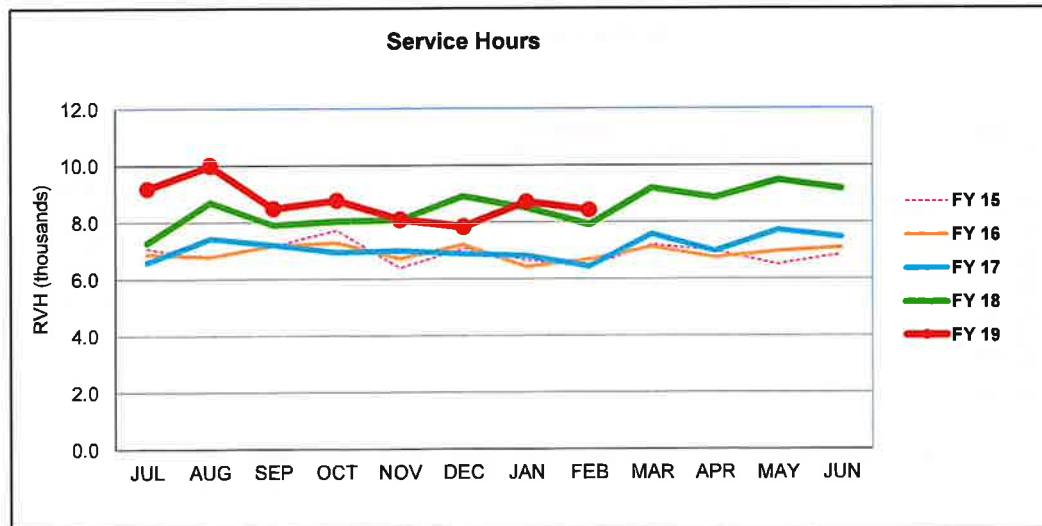
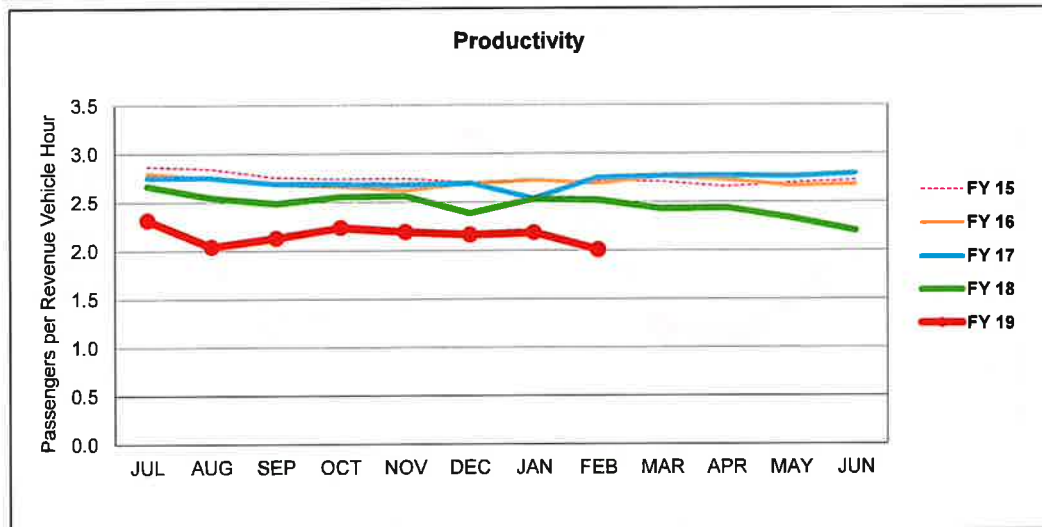
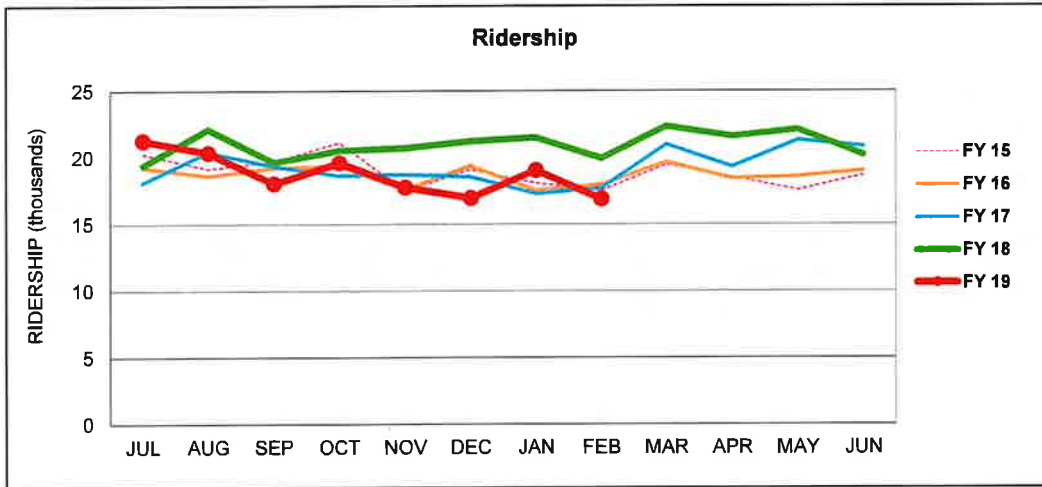
TART Performance Statistics

Performance Indicator	Current month compared with same month last year			Current 12-months compared with previous year		
	Feb 2019	Percent Change	Feb 2018	Mar 2018 - Feb 2019	Percent Change	Mar 2017 - Feb 2018
Monthly Ridership	5,346	-0.7%	5,383	45,224	21.9%	37,104
Weighted Avg. Daily Ridership	190.9	-0.7%	192.3	125.4	22.9%	102.0
Revenue Vehicle Hours (RVH)	299	-15.2%	352	4,349	4.0%	4,181
Passengers per RVH	17.9	17.1%	15.3	10.4	17.2%	8.9
Revenue Vehicle Miles (RVM)	6,514	-15.2%	7,678	93,139	2.2%	91,151
Revenue	\$4,654	-19.7%	\$5,796	\$48,117	16.4%	\$41,355
Farebox Recovery Ratio	13.0%	-9.0%	14.3%	9.4%	2.1%	9.2%
Subsidy per Passenger	\$5.81	-9.8%	\$6.44	\$10.29	-6.7%	\$11.03

RTC Transit Fiscal Year Comparisons



RTC ACCESS Fiscal Year Comparisons



TART - Nevada Fiscal Year Comparisons

