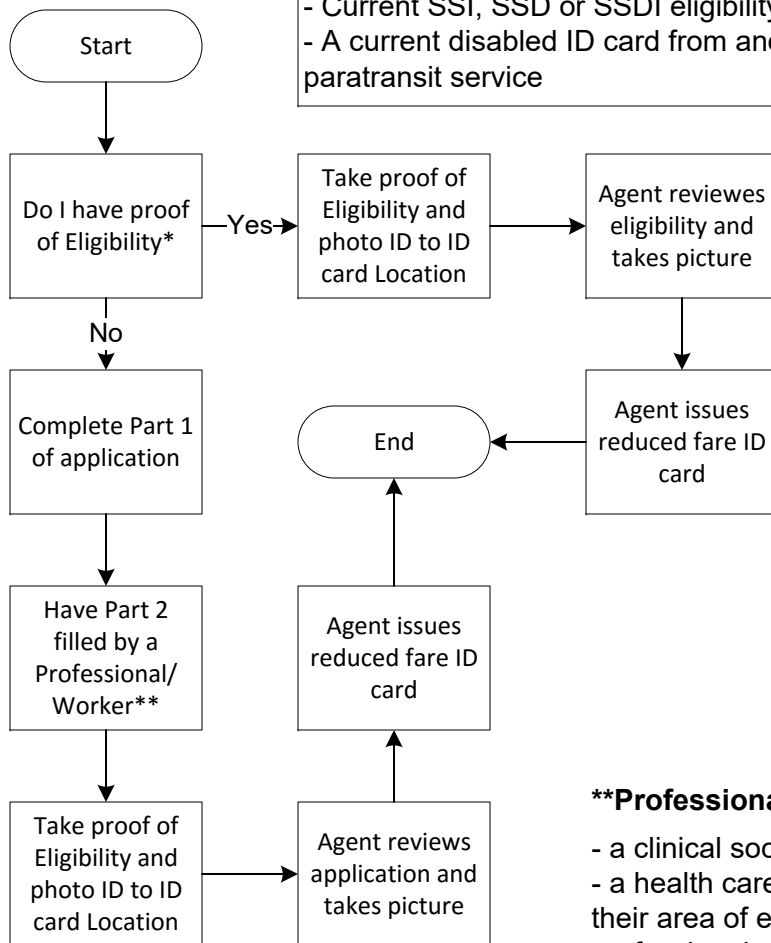


RTC RIDE offers a reduced fare to all persons who have a documented disability that functionally limits their ability to ride RTC RIDE transit buses. Eligible persons meet the Federal Transit Administration's (FTA) definition of disabled if "any individual who, by reason of illness, injury, age, congenital malfunction or other permanent or temporary disability are unable, without special facilities or special planning or design, to utilize mass transportation and services as effectively as persons who are not so affected." Economic need does not qualify.

***Proof of Eligibility**

- Medicare card, or
- Current SSI, SSD or SSDI eligibility document, or
- A current disabled ID card from another transit or paratransit service



****Professional / Worker**

- a clinical social worker of one of the authorizing agencies listed; or
- a health care professionals who have completed a specific educational curriculum, who are licensed in their area of expertise and whose occupation concerns human health. The most common health care professionals include doctors, nurses, physical therapists, dentists, chiropractors and mental health professionals; or
- a Washoe County School District Special Education teacher.

ID Card Location

RTC 4TH STREET STATION Passenger Services in downtown Reno, 4th and Lake St

Authorizing Agencies

Northern Nevada Adult Mental Health Services | 775.688.2001

480 Galletti Way
Sparks, NV 89431

Nevada Department of Employment, Training and Rehabilitation | 775.823.8100

Bureau of Vocational Rehabilitation
Services to Blind/Visually Impair
1325 Corporate Blvd
Reno, NV 89502

Northern Nevada HOPES | 775.997.7503

467 Ralston St
Reno, NV 89503

Northern Nevada Center for Independent Living | 775.353.3599

999 Pyramid Way
Sparks, NV 89431

Sierra Regional Center (SRC) | 775.688.1930

605 S 21st St
Sparks, NV 89431

VA Sierra Nevada Health Care System | 775.786.7200

975 Kirman Avenue
Reno, NV 89502

Washoe County School District

(Contact your School Special Education Teacher directly)

