



# STREETS & HIGHWAYS Project Summary Report

## Congestion Relief Projects

The following information is submitted for the period of March 30, 2012 through April 27, 2012.

Generally, the RTC requires contractors to maintain at least one travel lane in each direction. Motorists are encouraged to drive with caution and pay close attention to traffic controls and flag persons. Occasionally, driveways will be temporarily closed one to three hours. Before driveways are closed, the contractor will provide 18-24 hour advance notice to property owners.

[Bicycle/Pedestrian Improvements 2 \(10/11\)](#)

[Geiger Grade Realignment – South Virginia Street to Toll Road](#)

[I-580/Meadowood Interchange \(Neil to S Virginia / S McCarran\)](#)

[Moana Lane Widening \(Virginia to I-580 Ramps\)](#)

[North Virginia / North McCarran Intersection \(Sierra to N McCarran\)](#)

[Plumb Lane / Terminal Way ITS Project](#)

[Pyramid and McCarran Intersection](#)

[Pyramid Highway/US 395 Connector EIS Study](#)

[S McCarran Boulevard Project Phase I \(Virginia to Mira Loma\)](#)

[S McCarran Boulevard Project Phase II \(Mira Loma to Greg Street\)](#)

[SouthEast Connector](#)

[Traffic Engineering Spot Intersection Improvement 1 \(10-11\)](#)

[Traffic Engineering Spot Intersection Improvement 2 \(11-12\)](#)

[Traffic Signal Timing 2 \(08/09\)](#)

[Traffic Signal Timing 3 \(09/10\)](#)

[Vista Boulevard Soundwalls](#)



# STREETS & HIGHWAYS Project Summary Report

## Bicycle/Pedestrian Improvements 2 (10/11) Virginia and Sierra – N. Virginia to 9<sup>th</sup> Street RTC Project No. 542023

**RTC Project Manager (PM):** Marchon Miller  
**RTC PM Contact Information:** (775) 335-1867  
[mmiller@rtcwashoe.com](mailto:mmiller@rtcwashoe.com)  
**RTC Engineering Department:** (775) 348-0171  
 (775) 348-0170 fax  
**Design Firm:** Fehr & Peers  
 (775) 826-3200 x1706  
**Construction Contractor:** To be determined



### Project Description & Purpose

This project consists of bicycle and pedestrian improvements as cited in the Bicycle-Pedestrian Master Plan and the ADA Transition Plan. These improvements will be contained within the corridor of Virginia and Sierra Streets from North Virginia to 9<sup>th</sup> Street.

This project will be on Virginia Street from 9<sup>th</sup> to Sierra Street and on Sierra Street from 9<sup>th</sup> to Virginia Street. Improvements will consist of new stutter flashers, concrete work, slurry sealing Sierra Street and new signal at Virginia Street and College Drive.

### Related Documents

Reg. Trans. Imp. Program (RTIP)  
 Regional Transportation Plan (RTP)  
 Bicycle-Pedestrian Master Plan  
 ADA Transition Plan

### Schedule

Planning:	May 2011
Design:	March 2012
Advertise:	April 2012
Bid Opening:	May 2012
Construction Start:	August 2012
Construction Complete:	To be determined

### Latest News

Coordination with City of Reno's sewer project is ongoing. Once the sewer project is complete, this project will commence.

Contract out to bid in April.

### Project Finance Plan

Funding Source:	RRIF (RTC-5)
Amount RTC Approved:	\$600,000
Total Project Estimate:	To be determined
Notes:	None

### Construction Traffic Control and Work Schedule Updates

For current traffic control information, please see the RTC's weekly Traffic Control Report at:  
<http://www.rtcwashoe.com/streets-highways-16>.

**Information is current for: April 2012**



# STREETS & HIGHWAYS Project Summary Report

## Geiger Grade Realignment South Virginia to Toll Road RTC Project No. 532010

**RTC Project Manager (PM):** Warren Call, P.E.  
**RTC PM Contact Information:** (775) 335-1881  
[jmasterpool@rtcwashoe.com](mailto:jmasterpool@rtcwashoe.com)  
**RTC Engineering Department:** (775) 348-0171  
 (775) 348-0170 fax  
**Design Firm:** Kimley-Horn and Associates  
 (775) 787-7552  
**Construction Contractor:** To be determined



### Project Description & Purpose

The Geiger Grade Road Realignment concept improves the overall network operation by connecting Veterans Parkway and Geiger Grade Road to South Virginia Street at separate locations approximately 2,600 feet apart. Geiger Grade Road will be realigned in a westerly direction at a new two-lane roundabout with Toll Road and Equestrian Road.

The Geiger Grade Road Realignment concept provides a context-sensitive solution that improves the overall network performance by providing additional capacity and flexibility in the network for future changes in demand.

Technical Working Group (TWG) meetings are held on the second Tuesday of the month at the RTC Engineering Offices located at 1105 Terminal Way, Suite 108 in Reno.

### Related Documents

Reg. Trans. Imp. Program (RTIP)  
 Regional Transportation Plan (RTP)

### Schedule

Planning:	Complete
Preliminary Engineering:	2011-2012
Final Design:	2013
Advertise:	2016
Construction:	2016-2017

### Latest News

Current activities include:

- Finalizing an Interlocal Agreement with NDOT
- Working with utility companies on utility relocations
- Landscape Concept - The landscaping stakeholders group met on December 13 and discussed some concepts for design using themes from the local area
- Meeting with NDOT/FHWA to discuss NEPA requirements

### Project Finance Plan

Funding Source:	RRIF (RTC-5)
Amount RTC Approved:	\$1,300,000
Design:	\$1,217,500
Construction:	\$31,600,000
Right of Way:	\$3,400,000
Total Project Estimate:	\$36,217,500

### Construction Traffic Control and Work Schedule Updates

Not applicable

Information is current for: April 2012



# STREETS & HIGHWAYS Project Summary Report

## I-580/MEADOWOOD INTERCHANGE

Neil Road to South Virginia Street/South McCarran Boulevard

**RTC Project No. 5328**

### PROJECT MANAGER (PM) CONTACT INFORMATION

#### Regional Transportation Commission

(RTC) PM:

Michele C. Dennis, P.E.

(775) 335-1861

[mdennis@rtcwashoe.com](mailto:mdennis@rtcwashoe.com)

State of Nevada, Department of  
Transportation (NDOT) PM:

Adam T. Searcy, P.E.

(702) 671-8864

[asearcy@dot.state.nv.us](mailto:asearcy@dot.state.nv.us)

Federal Highway Administration  
(FHWA) PM:

Andrew H. Soderborg, P.E.

(775) 687-5320

[andrew.soderborg@dot.gov](mailto:andrew.soderborg@dot.gov)

Design Firm (CH2M Hill) PM:

Cynthia M. Potter, P.E.

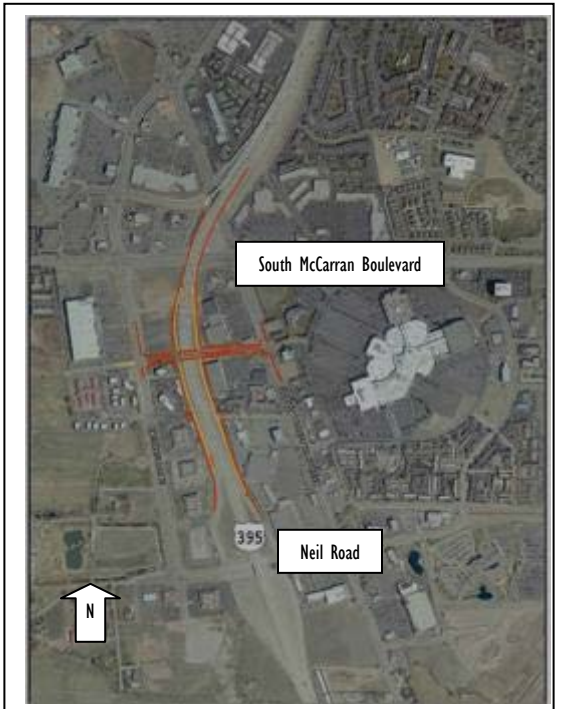
(775) 329-7300 x 36914

[cindy.potter@ch2m.com](mailto:cindy.potter@ch2m.com)

Construction Contractor (Meadow  
Valley Contractors) PM:

Tom Patton

[tpatton@meadowvalley.com](mailto:tpatton@meadowvalley.com)



### Project Description & Purpose

This project will reconfigure the existing I-580 Interchange at Neil Road to a split diamond, which will improve the flow of traffic in a critical commercial area in the southwest Truckee Meadows by:

- Constructing a new bridge structure and extending Meadowood Mall Way under the freeway mainline to connect with Kietzke Lane;
- Widening bridge structures at South Virginia Street and South McCarran Boulevard;
- Eliminating the existing southbound off-ramp and northbound on-ramp at Neil Road; and
- Construction of a new southbound off-ramp and northbound on-ramp at Meadowood Mall Way with frontage roads to connect to the southbound on-ramp and northbound off-ramp at Neil Road.

The project vicinity contains several large commercial/retail centers that draw traffic. These centers and the growth occurring and planned in the South Truckee Meadows and Reno/Sparks generate the purpose and need:

- To provide **additional freeway access** between I-580 and regional commercial/retail hub within project vicinity;
- To **reduce traffic volumes** at the South Virginia freeway ramps and at the intersection of South McCarran and South Virginia; and
- To **improve traffic circulation** at several key intersections in the project area, including South McCarran/South Virginia; Kietzke/South McCarran; South Virginia/Meadowood Mall Way; I-580 Ramps/Neil Road.

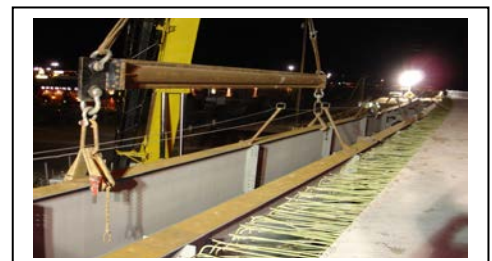
The American Reinvestment and Recovery Act (ARRA) funds are being used for project construction.

### Related Documents

Environmental Assessment, October 2005  
 Change in Access Request, August 2006  
 Regional Transportation Improvement Program (RTIP)  
 Regional Transportation Plan (RTP)

### Schedule

Planning:	Complete
Preliminary Engineering:	Complete
Final Design:	Complete
Advertise:	January 21, 2010
Construction:	2010 - 2012



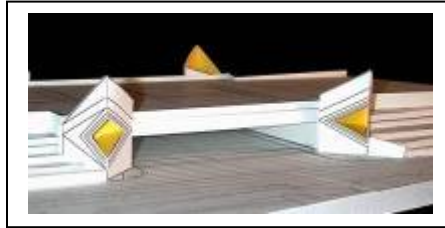


# STREETS & HIGHWAYS Project Summary Report

## Latest News

Construction of the final (western) third of the main structure is in progress.

The next quarterly informational open house is scheduled for Tuesday, April 3, 2012, from 5:00 pm to 6:00 pm, at the Meadowood Courtyard Super 8, 5851 South Virginia Street, Reno, Nevada



This project will include several aesthetic components, including custom form-liners and light towers.

## Project Finance Plan

Funding Source:	Amount <sup>1</sup>
American Reinvestment and Recovery Act (ARRA):	\$26,000,000
Other Federal Aid <sup>2</sup> :	\$8,500,000
Regional Road Impact Fees (RRIF):	\$7,000,000
Indexed Fuel Tax ("RTC-5"):	\$21,300,000
<b>Total Project Estimate:</b>	<b>\$46,500,000</b>

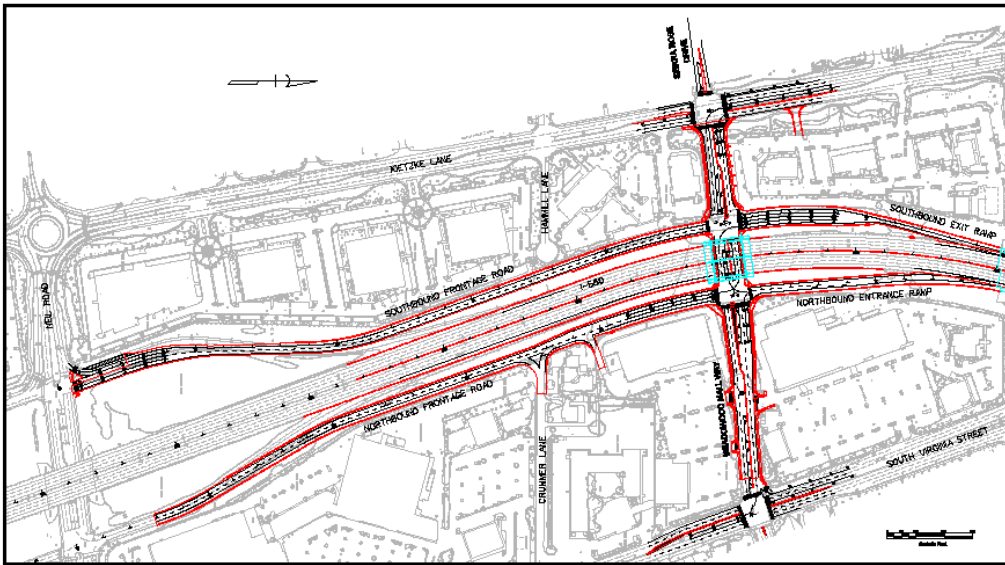
### Notes:

1. Rounded
2. Other Federal Aid: Interstate Maintenance Discretionary Funds (IMD); Surface Transportation Program (STP) Washoe County High Priority; High Priority Projects (HPP); and Transportation Community and System Preservation Program (TCSP)

## Construction Traffic Control and Work Schedule Updates

**Depending on the work location, South Virginia Street or McCarran Boulevard may be reduced to one lane or closed at the point of the freeway overpass. Changing traffic controls will be in place on the freeway mainline from Neil Road to Moana Lane. Lane widths will be reduced and the alignment will shift in both the NB and SB directions.** For current traffic control information, please see the RTC's weekly Traffic Control Report at: <http://www.rtcwashoe.com/streets-highways-16>.

**Please use caution and observe the 55 mph speed limit throughout the construction zone.**



Information is current for: April 2012



# STREETS & HIGHWAYS Project Summary Report

## Moana Lane Widening – Virginia Street to I-580 Ramps RTC Project No. 532005

**RTC Project Manager (PM):** Doug Maloy, P.E.  
**RTC PM Contact Information:** (775) 335-1865  
[dmaloy@rtcwashoe.com](mailto:dmaloy@rtcwashoe.com)  
**RTC Engineering Department:** (775) 348-0171  
 (775) 348-0170 fax  
**Design Firm:** Stantec Consulting  
 (775) 850-0777  
**Construction Contractor:** To be determined



### Project Description & Purpose

- This project will widen Moana Lane from Virginia Street to I-580 from 4 to 6 lanes. The need for this project has been confirmed based on the regional consensus forecast. The purpose of this project is to reduce existing congestion and provide future capacity for this important resort and commuter corridor.
- Reconstruction of the existing roadway in addition to the new added lanes, utility relocations, curb, gutter, sidewalk, and traffic signal equipment, is included in the project.

### Related Documents

Regional Transportation Plan (RTP)  
 Regional Trans. Improvement Program (RTIP)  
 Moana Lane Corridor Study (January 2004)  
 Moana Lane Alignment Study (June 2004)

### Schedule

Planning	Complete
Final design complete:	1 <sup>st</sup> Qtr 2012
Advertise (Road Const.):	1 <sup>st</sup> Qtr 2012
Construction Start:	2 <sup>nd</sup> Qtr 2012
Construction Complete:	4 <sup>th</sup> Qtr 2012

### Latest News

- Demolition of buildings acquired by the RTC began in November 2011 and will be complete by the end of March 2012.
- Utility relocation work is underway to accommodate the road improvements.
- Final design is complete and the RTC has solicited bids for construction.
- The RTC is working with the Nevada Department of Transportation on alternatives for potential future improvements at the Moana and I-580 interchange.
- A public information meeting was held on February 15, 2012.

### Project Finance Plan

Funding Source:	(RTC-5 Bonds)
Design cost:	\$1.2 million
Right of Way Estimate:	\$18 million
Construction Estimate:	\$17-\$18 million

### Construction Traffic Control and Work Schedule Updates

For current traffic control information, please see the RTC's weekly Traffic Control Report at:  
<http://www.rtcwashoe.com/streets-highways-16>.

**Information is current for: April 2012**



# STREETS & HIGHWAYS Project Summary Report

## North Virginia / North McCarran Intersection Sierra to N McCarran

**PWP No. TBD / RTC Project No. 512010**

**RTC Project Manager (PM):** Blaine Petersen, P.E., PTOE

**RTC PM Contact Information:** (775) 335-1871  
[bpetersen@rtcwashoe.com](mailto:bpetersen@rtcwashoe.com)

**RTC Engineering Department:** (775) 348-0171  
(775) 348-0170 fax

**Design Firm:** Parsons Brinckerhoff  
775-853-7400

**Construction Contractor:** To be determined



### Project Description & Purpose

The North Virginia Street at North McCarran Boulevard intersection delay has increased and this intersection has appeared on the top ten high crash location list numerous times.

This project will evaluate the best option for intersection improvements between traffic signal modification and roundabout installation.

The best option will move forward into final design.

### Related Documents

Reg. Trans. Imp. Program (RTIP)  
Regional Transportation Plan (RTP)  
2005 Conceptual Study by KHA

### Schedule

Public Meeting:	To be determined
Design:	Spring 2012
Advertise:	To be determined
Bid Opening:	To be determined
Construction Start:	To be determined
Construction Complete:	To be determined

### Latest News

A Professional Services Agreement (PSA) was approved by the RTC Board. Preliminary (30%) design is underway and will continue through June 2012.

### Project Finance Plan

Funding Source: Regional Road Impact Fee	
Amount RTC Approved:	\$4,000,000
Preliminary Design:	\$308,000
Final Design:	To be determined
Construction:	To be determined
Total Project Estimate:	\$4,000,000

### Construction Traffic Control and Work Schedule Updates

For current traffic control information, please see the RTC's weekly Traffic Control Report at:  
<http://www.rtcwashoe.com/streets-highways-16>.

**Information is current for: April 2012**

Subscribe to  at [www.rtcwashoe.com](http://www.rtcwashoe.com) to receive e-mail updates about this project and other RTC services and programs.



# STREETS & HIGHWAYS Project Summary Report

## Plumb Lane / Terminal Way ITS Project

**PWP No. WA-2010-11 / RTC Project No. 532012**

**RTC Project Manager (PM):** Blaine Petersen, P.E., PTOE

**RTC PM Contact Information:** (775) 335-1871

[bpetersen@rtcwashoe.com](mailto:bpetersen@rtcwashoe.com)

**RTC Engineering Department:** (775) 348-0171

(775) 348-0170 fax

**Design Firm:** Kimley-Horn

**Construction Contractor:** To be determined



### Project Description & Purpose

- This project will install new detection at the intersection of Plumb Lane and Harvard Way and at the intersection of Plumb Lane at Kietzke Lane to replace malfunctioning video detection.
- Other improvements will include interconnect between Kietzke Lane and the freeway; and interconnect on Terminal Way from Plumb Lane to Mill Street.
- Installation of Pan/Tilt/Zoom cameras to monitor traffic flows.

### Related Documents

Regional Transportation Plan  
Traffic Analysis and Conceptual Design

### Schedule

Planning:	Complete
Preliminary Engineering:	Winter 2011
Final Design:	Spring 2012
Advertise:	Summer 2012
Construction:	Summer 2012

### Latest News

The RTC Board approved the design agreement for the amended project at the December 16, 2011, Board meeting.

50% design is currently under review by RTC and the City of Reno.

### Project Finance Plan

Funding Source: Regional Road Impact Fee (RTC – 5)

Amount RTC Approved:	\$5,000,000
Design & EDC	\$179,226
Construction	\$1,100,000
<b>Total Project Estimate:</b>	<b>\$1,200,000</b>

### Construction Traffic Control and Work Schedule Updates

For current traffic control information, please see the RTC's weekly Traffic Control Report at:

<http://www.rtcwashoe.com/streets-highways-16>.

**Information is current for: April 2012**

Subscribe to  at [www.rtcwashoe.com](http://www.rtcwashoe.com) to receive e-mail updates about this project and other RTC services and programs.



# STREETS & HIGHWAYS Project Summary Report

## Pyramid & McCarran Intersection

### RTC Project No. 540082

**RTC Project Manager (PM):** Scott Gibson, P.E.  
**RTC PM Contact Information:** (775) 335-1874  
[sgibson@rtcwashoe.com](mailto:sgibson@rtcwashoe.com)  
**RTC Engineering Department:** (775) 348-0171  
 (775) 348-0170 fax  
**Design Firm:** Parsons  
 (775) 885-2280  
**Construction Contractor:** To be determined



### Project Scope

- Environmental Impact Statement (EIS) including alternative selection, alignment selection, public outreach, and agency coordination.
- Acquire right-of-way sufficient to build the necessary improvements.
- Increase the capacity of the intersection to Policy Level of Service (LOS) "E" without degrading LOS at other intersections within the study area below LOS "E" through year 2030.

### Purpose and Need

- This project is proposed to meet the short- and long-term transportation needs of the project area in response to regional growth.
- The purpose of the project is two-fold:
  - Decrease traffic congestion to meet community LOS standards
  - Improve Safety
- The purpose of the project is based on the existing and projected transportation needs and deficiencies in the Pyramid and McCarran corridors.

### Related Documents

Pyramid Hwy Corridor Management Plan (Nov 2001)  
 I-80 to US-395 Connector Project Study (2003)  
 RTC Regional Transportation Plan (November, 2008)  
 Current Reg. Trans. Improvement Plan (RTIP)

### Schedule

Draft EIS:	1 <sup>st</sup> Qtr 2012
Record of Decision:	1 <sup>st</sup> Qtr 2013
Final Design Complete:	2 <sup>nd</sup> Qtr 2013
Begin Construction:	1 <sup>st</sup> Qtr 2015

### Latest News

Review of the Draft Environmental Impact Statement has been completed by RTC staff and NDOT Environmental Staff. Next steps in the review process:

- FHWA Review – March 2012
- Public Hearing – May 2012
- Final EIS Review – July 2012
- Record of Decision – March 2013

RTC staff will begin developing a final agreement with NDOT on responsibilities for executing the construction and ROW acquisition on the project.

### Project Finance Plan

Funding Sources: CMAQ\*, Fuel Tax, RTC-5 Bonds, Federal Pyramid Highway Corridor Earmarks

Amount RTC Approved:	\$5.5M
Total Project Estimate:	\$61M-\$71M

Note: Eligible for RTC-5 Bond funding.  
 All costs in 2009 dollars  
 \*CMAQ – Congestion Mitigation Air Quality  
 \*\*EDC – Engineering During Construction  
 (Construction Management, Inspection, Testing)

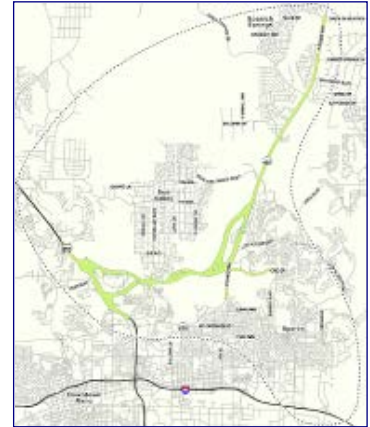
Information is current for: April 2012



# STREETS & HIGHWAYS Project Summary Report

## Pyramid Highway / US 395 Connector EIS Study RTC Project No. 520062

**RTC Project Manager (PM):** Doug Maloy, P.E.  
**RTC PM Contact Information:** (775) 335-1865  
[dmaloy@rtcwashoe.com](mailto:dmaloy@rtcwashoe.com)  
**RTC Engineering Department:** (775) 348-0171  
 (775) 348-0170 fax  
**Design Firm:** Jacobs Engineering  
 (775) 850-5100  
**Construction Contractor:** To be determined



### Project Description & Purpose

- Environmental Impact Statement (EIS) including alternative selection, preliminary engineering, public outreach, agency coordination, environmental analysis, and documentation.
- Conversion of approximately 6 miles of existing Pyramid Highway (SR 445) from an arterial to a controlled access freeway.
- Development of new controlled access freeway from US 395 to Pyramid Highway with improvements east to Vista Boulevard.
- Project will alleviate current and future congestion in Sparks and Spanish Springs, serve future growth areas, and provide additional east/west connectivity.

### Related Documents

Pyramid Corridor Master Plan 2001  
 Reg. Trans. Imp. Program (RTIP)  
 Regional Transportation Plan (RTP)

### Schedule

Draft EIS:	1 <sup>st</sup> Qtr 2012
Final EIS:	4 <sup>th</sup> Qtr 2012
Record of Decision:	3 <sup>rd</sup> Qtr 2013
Final Design:	To be determined
Construction Start:	To be determined

### Latest News

Details on this study are available for viewing on the RTC website, [www.rtcwashoe.com](http://www.rtcwashoe.com).

Preparation of the Draft Environmental Impact Statement (DEIS) is complete and has been submitted to the RTC and NDOT for review and comment.

### Project Finance Plan

Funding Source: State Gas Tax Federal SAFETEA-LU

Amount RTC Approved: \$8.2M  
 Total Project Estimate: \$600M\*

#### Notes:

\*Regional Transportation Plan Estimate. Preliminary Design & Environmental Clearance estimated \$8.2M. Final Design, right-of-way, and construction estimates unknown pending completion of Draft Environmental Impact Statement.

### Construction Traffic Control and Work Schedule Updates

Not Applicable

Information is current for: April 2012



# STREETS & HIGHWAYS Project Summary Report

**S McCarran Boulevard – Phase I**  
**Virginia Street to Mira Loma Drive**  
**PWP-WA-2011-163 / RTC Project No. 542017-P1**

**RTC Project Manager (PM):** Brenda Lee, P.E.  
**RTC PM Contact Information:** (775) 335-1863  
[blee@rtcwashoe.com](mailto:blee@rtcwashoe.com)

**RTC Engineering Department:** (775) 348-0171  
 (775) 348-0170 fax

**Design Firm:** Wood Rodgers, Inc.  
 (775) 823-4068

**Construction Contractor:** Granite Construction Company  
 (775) 358-8792



**Project Description & Purpose**

The overall project is to provide the improvements needed as identified in the SE McCarran Corridor Study and to incorporate NDOT’s pavement rehabilitation project. This phase of the project will include the following:

- Pavement rehabilitation from Virginia Street to Mira Loma Drive.
- Widening from 4 lanes to 6 lanes between Longley Lane to Mira Loma Drive, including a shared use path.

The pavement rehabilitation will upgrade the pavement conditions for the future years to come with no change to the existing configurations. Widening of the roadway will relieve congestion, increase safety, and improve aesthetics.

**Related Documents**

Reg. Trans. Imp. Program (RTIP)  
 Regional Transportation Plan (RTP)  
 SE McCarran Corridor Study

**Schedule**

Planning:	Complete
Preliminary Design:	Complete
Final Design:	Complete
Advertise:	Complete
Construction:	Resuming Apr '12

**Latest News**

Construction started June 20, 2011, and is scheduled to be complete by Fall 2012. There will be minor pavement work between Mira Loma Drive and Perro Lane for the purpose of transitioning from the existing 4 lanes configuration to tie in to the new 6 lanes configuration south of Mira Loma Drive. The work schedule is as follows:

Jun 2011 to Sep 2011  
 Virginia to Longley (excluding Longley intersection) - storm drain improvements between Mira Loma and Perro. It is anticipated that the substantial completion for this portion of work will be September 9; about one week ahead of schedule.

Sep 2011 to Mar 2012  
 Winter Shutdown (roadway open with no construction traffic control).

April 2012 to Sep 2012  
 Longley intersection to Perro.

**Project Finance Plan**

Funding Source: RRIF (RTC-5) & NDOT funds

Amount RTC Approved:	\$10,200,000
Amount by NDOT:	\$6,000,000
Total Project Estimate:	\$16,200,000

*Notes:*  
 Design is estimated at \$1.5M; Right-of-way is estimated at \$0.2M; Construction costs (including construction administration) are estimated at \$14.5M.

**Construction Traffic Control and Work Schedule Updates**

For current traffic control information, please see the RTC’s weekly Traffic Control Report at:  
<http://www.rtcwashoe.com/streets-highways-16>.

**Information is current for: April 2012**



# STREETS & HIGHWAYS Project Summary Report

## S McCarran Boulevard – Phase II Mira Loma Drive to Greg Street RTC Project No. 542017-P2

**RTC Project Manager (PM):** Brenda Lee, P.E.  
**RTC PM Contact Information:** (775) 335-1863  
[blee@rtcwashoe.com](mailto:blee@rtcwashoe.com)  
**RTC Engineering Department:** (775) 348-0171  
 (775) 348-0170 fax  
**Design Firm:** Wood Rodgers, Inc.  
 (775) 823-4068  
**Construction Contractor:** To be determined



### Project Description & Purpose

The overall project is to provide the improvements needed as identified in the SE McCarran Corridor Study and to incorporate NDOT’s pavement rehabilitation project. This phase of the project will include the following:

- Pavement rehabilitation from Mira Loma Drive to 200’ south of Equity Avenue.
- Widening from 4 lanes to 6 lanes between Mira Loma Drive and Greg Street, including a shared use path.
- Aesthetics and Soundwalls between Longley Lane & Greg Street.

The pavement rehabilitation will upgrade the pavement conditions for the future years to come with no change to the existing configurations. Widening of the roadway will relieve congestion, increase safety, and improve aesthetics.

### Related Documents

Reg. Trans. Imp. Program (RTIP)  
 Regional Transportation Plan (RTP)  
 SE McCarran Corridor Study

### Schedule

Planning:	Complete
Preliminary Design:	Complete
Final Design:	2 <sup>nd</sup> Qtr 2012
Advertise:	2014
Construction:	2014

### Latest News

This phase of the project is in final design stage. Current activities include:

- Finalizing an Interlocal Agreement with NDOT.
- Working on final design.
- Working with utility companies on utility relocations.
- Starting right-of-way acquisition.

The project schedule is dependent on right-of-way acquisition to be performed by NDOT which is anticipated to take 24 months.

### Project Finance Plan

Funding Source: RRIF (RTC-5) & NDOT funds

Amount RTC Approved:	\$16,735,000
Amount by NDOT:	\$6,000,000
Total Project Estimate:	\$22,735,000

#### Notes:

*Design is estimated at \$1.5M; Right-of-way is estimated at \$6.2M; Construction costs (including utility relocation and construction administration) are estimated at \$11M to \$15M.*

### Construction Traffic Control and Work Schedule Updates

The roadway is open with no construction traffic control.

Information is current for: April 2012



# STREETS & HIGHWAYS Project Summary Report

## SouthEast Connector RTC Project No. 532011

**RTC Project Manager (PM):** Garth Oksol, P.E.  
**RTC PM Contact Information:** (775) 332-2137  
[goksol@rtcwashoe.com](mailto:goksol@rtcwashoe.com)  
**RTC Engineering Department:** (775) 348-0171  
 (775) 348-0170 fax  
**Design Firm:** Stantec Consulting, Inc.  
 (775) 850-0777  
 T.Y. Lin International Group  
 (702) 810-6097  
**Construction Contractor:** To be determined



### Project Description & Purpose

The SouthEast Connector (SEC) is a regional roadway that will run from the intersection of Sparks Boulevard and Greg Street in the north, to South Meadows Parkway and Veterans Parkway in the south. It is a six lane non-elevated roadway with multi-use paths.

The SEC is a vital link that connects the south part of the Truckee Meadows with the east part of the Truckee Meadows. The only other continuous link that serves this purpose is US-395 to I-80, which is reaching critical capacity. All other regional roads in the southeast part of the Truckee Meadows are also reaching critical capacity. The SEC provides much needed relief to the entire transportation network.

The SEC is a regional roadway that has been planned and discussed for over 40 years. Developments in south Reno and Sparks have been approved because the SEC is on the Regional Transportation Plan. Existing new roadways have been approved for future capacity needs assuming the SEC is built. If the SEC is not built, those roadways do not have the ability to handle additional capacity without major impacts to homes, apartments, businesses, etc.

### Related Documents

Plan Line Study for the SouthEast Connector  
 (January 20, 2009)  
 Reg. Trans. Imp. Program (RTIP)  
 Regional Transportation Plan (RTP)

### Schedule

Planning:	January 2009
Prelim. Engineering:	Fall 2011
Final Design:	Fall 2012
Advertise:	To be determined
Construction:	To be determined

### Latest News

The Section 404 Clean Water Act Permit with the US Army Corp of Engineers was submitted on May 31, 2011. The responses to Public Comments were submitted to the US Army Corps on December 28, 2011. Both the Permit and response to Public Comments are available on the [www.rtcwashoe.com](http://www.rtcwashoe.com) website.

The latest flood mitigation model was turned into the Truckee River Flood Management Agency on October 11, 2011 for review.

Kiewit Infrastructure West was selected to provide pre-construction services during design, and Atkins North America was selected to provide independent cost estimating services for Phase 1.

### Project Finance Plan

Funding Source: RTC-5 Fuel Tax Bonding

Preliminary Engineering:	\$3,236,000
Final Design:	\$9-\$10M
Right-of-Way:	\$39-\$44M
Construction:	\$106-\$118M
Total Project Estimate:	\$154-\$167M*

### Construction Traffic Control and Work Schedule Updates

For current traffic control information, please see the RTC's weekly Traffic Control Report at:  
<http://www.rtcwashoe.com/streets-highways-16>.

**Information is current for: April 2012**



# STREETS & HIGHWAYS Project Summary Report

## Traffic Signal Timing 2 (08/09)

### RTC Project No. 540042

**RTC Project Manager (PM):** Jim Poston, P.E., PTOE  
**RTC PM Contact Information:** (775) 332-2139  
[jposton@rtcwashoe.com](mailto:jposton@rtcwashoe.com)  
**RTC Engineering Department:** (775) 348-0171  
 (775) 348-0170 fax  
**Design Firm:** Iteris, Inc.  
 (949) 270-9400  
**Construction Contractor:** Not applicable



### Project Description & Purpose

- Collect traffic & signal data
- Evaluate existing signal timing & develop new timing at 150 intersections
- Implement timing in the field
- Fine-tune timing
- Conduct before-after studies

### Related Documents

Reg. Trans. Imp. Program (RTIP)  
 Regional Transportation Plan (RTP)

### Schedule

Public Meeting: N/A  
 Design: December 2009  
 Advertise: N/A  
 Bid Opening: N/A  
 Implementation Start: Spring 2011  
 Implementation Complete: April 2012

### Latest News

New signal timings have been implemented and traffic operations are being monitored.

After video has been completed it will be posted to the website in April.

Informational website is in development.

### Project Finance Plan

Funding Source: Federal-CMAQ  
 Amount RTC Approved: \$484,945  
 Total Project Estimate: \$484,945  
 Notes: None

### Construction Traffic Control and Work Schedule Updates

None

Information is current for: April 2012



# STREETS & HIGHWAYS Project Summary Report

## Traffic Signal Timing 3 (09/10)

### RTC Project No. 542016

**RTC Project Manager (PM):** Blaine Petersen, P.E., PTOE  
**RTC PM Contact Information:** (775) 335-1871  
[bpetersen@rtcwashoe.com](mailto:bpetersen@rtcwashoe.com)  
**RTC Engineering Department:** (775) 348-0171  
 (775) 348-0170 fax  
**Design Firm:** Orth-Rodgers and Associates, Inc.  
 (702) 233-4060  
**Construction Contractor:** Not applicable



### Project Description & Purpose

- Collect traffic & signal data
- Evaluate existing signal timing & develop new timing at 140 intersections
- Implement timing in the field
- Fine-tune timing
- Conduct before-after studies

### Related Documents

Reg. Trans. Imp. Program (RTIP)  
 Regional Transportation Plan (RTP)

### Schedule

Planning:	Complete
Preliminary Engineering:	Complete
Final Design:	Summer 2011
Advertise:	N/A
Implementation Start:	Fall 2011

### Latest News

The new agreement signed by the RTC Board on March 16, was sent to NDOT for final approval. Once the new Agreement is in place, implementation of new signal timing will begin most likely in April/June.

### Project Finance Plan

Funding Source:	Federal-CMAQ
Amount RTC Approved:	\$450,000
Total Project Estimate:	\$427,995.47
Notes:	None

### Construction Traffic Control and Work Schedule Updates

For current traffic control information, please see the RTC's weekly Traffic Control Report at:  
<http://www.rtcwashoe.com/streets-highways-16>.

Information is current for: April 2012

Subscribe to  at [www.rtcwashoe.com](http://www.rtcwashoe.com) to receive e-mail updates about this project and other RTC services and programs.



# STREETS & HIGHWAYS Project Summary Report

## Traffic Engineering Spot Intersection Improvement 1 (10-11) RTC Project No. 542020

**RTC Project Manager (PM):** Blaine Petersen, P.E., PTOE  
**RTC PM Contact Information:** (775) 335-1871  
[bpetersen@rtcwashoe.com](mailto:bpetersen@rtcwashoe.com)  
**RTC Engineering Department:** (775) 348-0171  
 (775) 348-0170 fax  
**Design Firm:** Atkins (formerly PBS&J, Inc.)  
 (775) 828-1622  
**Construction Contractor:** PAR Electrical Contractors  
 (775) 329-0407



### Project Description & Purpose

This project will improve traffic flow at nine intersections in the Reno-Sparks area. These improvements were identified and agreed upon by the local agencies.

The purpose of the project is to make improvements that provide substantial benefits to traffic flow at the intersections.

The project includes two new traffic signals – Veterans Parkway at Steamboat Parkway and Steamboat Parkway at Damonte Ranch Parkway.

### Related Documents

Reg. Trans. Imp. Program (RTIP)  
 Regional Transportation Plan (RTP)  
 Traffic Signal Timing 1 Project

### Schedule

Planning:	Complete
Preliminary Engineering:	Complete
Final Design:	April 2011
Advertise:	May 2011
Construction:	July 2011

### Latest News

Project is substantially complete.

### Project Finance Plan

Funding Source:	Regional Road Impact Fee (RTC-5)
Amount RTC Approved:	\$1,500,000
Total Project Estimate:	\$1,400,000

### Construction Traffic Control and Work Schedule Updates

For current traffic control information, please see the RTC's weekly Traffic Control Report at:  
<http://www.rtcwashoe.com/streets-highways-16>.

Information is current for: April 2012



# STREETS & HIGHWAYS Project Summary Report

## Traffic Engineering Spot Intersection Improvement 2 (11-12) RTC Project No. 542025

**RTC Project Manager (PM):** Blaine Petersen, P.E., PTOE  
**RTC PM Contact Information:** (775) 335-1871  
[bpetersen@rtcwashoe.com](mailto:bpetersen@rtcwashoe.com)  
**RTC Engineering Department:** (775) 348-0171  
 (775) 348-0170 fax  
**Design Firm:** Traffic Works  
 (775) 544-9432

**Construction Contractor:** To be determined



### Project Description & Purpose

This project will improve traffic flow at thirty two (32) intersections in the Reno-Sparks and Washoe County area. These improvements were identified and agreed upon by the local agencies.

The purpose of the project is to make improvements that provide substantial benefits to traffic flow at the intersections.

The project includes installation of new Flashing Yellow Arrow (FYA) indications for existing protected only left turn lanes and installation of inductive loops to better detect vehicles.

### Related Documents

Reg. Trans. Imp. Program (RTIP)  
 Regional Transportation Plan (RTP)

### Schedule

Planning:	Complete
Preliminary Engineering:	2011
Final Design:	Winter 2011
Advertise:	Winter 2011/2012
Construction:	Spring 2012

### Latest News

Project construction is scheduled at the following locations:

- Pyramid Wy at Disc Drive – installation of conduit
- Pyramid Wy at Los Altos Pkwy – installation of conduit
- Rock Blvd from Oddie Blvd to McCarran Blvd – installation of fiber optic communication
- Sun Valley at 7<sup>th</sup> – installation of conduit

### Project Finance Plan

Funding Source:	Regional Road Impact Fee (RTC-5)
Amount RTC Approved:	\$1,500,000
Design & EDC:	\$318,600
Construction:	\$1,191,506

### Construction Traffic Control and Work Schedule Updates

For current traffic control information, please see the RTC's weekly Traffic Control Report at: <http://www.rtcwashoe.com/streets-highways-16>.

**Information is current for: April 2012**



# STREETS & HIGHWAYS Project Summary Report

## Vista Boulevard Soundwalls (North Los Altos Pkwy to Wingfield Hills Pkwy) PWP No. WA-2009-328 / RTC Project No. 522007

RTC Project Manager (PM): Marchon Miller  
 RTC PM Contact Information: (775) 335-1867  
[mmiller@rtcwashoe.com](mailto:mmiller@rtcwashoe.com)  
 RTC Engineering Department: (775) 348-0171  
 (775) 348-0170 fax  
 Design Firm: Atkins  
 (775) 828-1622  
 Construction Contractor: Meadow Valley Contractors  
 (775) 284-4496



### Project Description & Purpose

The purpose of this project is to construct new Soundwalls in 5 locations along the east side of Vista Boulevard between Los Altos Boulevard and Wingfield Hills Parkway.

### Related Documents

Reg. Trans. Imp. Program (RTIP)  
 Regional Transportation Plan (RTP)  
 Website- [www.rtcwashoe.com/streets-highways](http://www.rtcwashoe.com/streets-highways)

### Schedule

Planning:	Complete
Preliminary Eng:	Complete
Final Design:	July 2011
Advertise:	August 2011
Construction Start:	October 2011/ April 2012 (Phase 2)
Construction Complete:	To be determined

### Latest News

First phase of the wall construction is complete.  
 Second phase of wall construction will begin April 2, 2012.  
 Staining of walls and landscaping will begin in the spring of 2012.

### Project Finance Plan

Funding Source:	RRIF (RTC-5)
Amount RTC Approved:	\$2,000,000
Total Construction Estimate:	\$1,026,231

Note: Project is fully funded by RTC-5 funds.

### Construction Traffic Control and Work Schedule Updates

For current traffic control information, please see the RTC's weekly Traffic Control Report at: <http://www.rtcwashoe.com/streets-highways-16>.

Information is current for: April 2012