



STREETS & HIGHWAYS Project Summary Report

Congestion Relief Projects

The following information is submitted for the period of January 27, 2012 through February 24, 2012.

Generally, the RTC requires contractors to maintain at least one travel lane in each direction. Motorists are encouraged to drive with caution and pay close attention to traffic controls and flag persons. Occasionally, driveways will be temporarily closed one to three hours. Before driveways are closed, the contractor will provide 18-24 hour advance notice to property owners.

[Bicycle/Pedestrian Improvements 2 \(10/11\)](#)

[Geiger Grade Realignment – South Virginia Street to Toll Road](#)

[I-580/Meadowood Interchange \(Neil to S. Virginia / S. McCarran\)](#)

[Moana Lane Widening \(Virginia to I-580 Ramps\)](#)

[North Virginia / North McCarran Intersection \(Sierra to N. McCarran\)](#)

[Plumb Lane / Terminal Way ITS Project](#)

[Pyramid and McCarran Intersection](#)

[Pyramid Highway/US 395 Connector EIS Study](#)

[S McCarran Boulevard Project Phase I \(Virginia to Mira Loma\)](#)

[S McCarran Boulevard Project Phase II \(Mira Loma to Greg Street\)](#)

[SouthEast Connector](#)

[Traffic Engineering Spot Intersection Improvement 1 \(10-11\)](#)

[Traffic Engineering Spot Intersection Improvement 2 \(11-12\)](#)

[Traffic Signal Timing 2 \(08/09\)](#)

[Traffic Signal Timing 3 \(09/10\)](#)

[Vista Boulevard Soundwalls](#)



STREETS & HIGHWAYS Project Summary Report

Bicycle/Pedestrian Improvements 2 (10/11) Virginia and Sierra – N. Virginia to 9th Street RTC Project No. 542023

RTC Project Manager (PM): Marchon Miller
RTC PM Contact Information: (775) 335-1867
mmiller@rtcwashoe.com
RTC Engineering Department: (775) 348-0171
 (775) 348-0170 fax
Design Firm: Fehr & Peers
 (775) 826-3200 x1706
Construction Contractor: To be determined



Project Description & Purpose

This project consists of bicycle and pedestrian improvements as cited in the bicycle-pedestrian master plan and the ADA transition plan. These improvements will be contained within the corridor of Virginia and Sierra Streets from North Virginia to 9th Street.

Related Documents

Reg. Trans. Imp. Program (RTIP)
 Regional Transportation Plan (RTP)
 Bicycle-Pedestrian Master Plan
 ADA Transition Plan

Schedule

Planning:	May 2011
Design:	October 2011
Advertise:	March 2012
Bid Opening:	March 2012
Construction Start:	August 2012
Construction Complete:	To be determined

Latest News

Coordination with City of Reno's sewer project is ongoing. Once the sewer project is complete, this project will commence.

The project was approved by the Reno City Council on November 16, 2011.

New stutter flashers are present along Virginia and Sierra Streets.

Project Finance Plan

Funding Source:	RRIF (RTC-5)
Amount RTC Approved:	\$600,000
Total Project Estimate:	To be determined
Notes:	None

Construction Traffic Control and Work Schedule Updates

For current traffic control information, please see the RTC's weekly Traffic Control Report at:
<http://www.rtcwashoe.com/streets-highways-16>.

Information is current for: February 2012



STREETS & HIGHWAYS Project Summary Report

Geiger Grade Realignment South Virginia to Toll Road RTC Project No. 532010

RTC Project Manager (PM): Julie Masterpool, P.E.
RTC PM Contact Information: (775) 335-1897
jmasterpool@rtcwashoe.com
RTC Engineering Department: (775) 348-0171
 (775) 348-0170 fax
Design Firm: Kimley-Horn and Associates
 (775) 787-7552
Construction Contractor: NA



Project Description & Purpose

The Geiger Grade Road Realignment concept improves the overall network operation by connecting Veterans Parkway and Geiger Grade Road to South Virginia Street at separate locations approximately 2,600 feet apart. Geiger Grade Road will be realigned in a westerly direction at a new two-lane roundabout with Toll Road and Equestrian Road.

The Geiger Grade Road Realignment concept provides a context-sensitive solution that improves the overall network performance by providing additional capacity and flexibility in the network for future changes in demand.

Technical Working Group (TWG) meetings are held on the second Tuesday of the month at the RTC Engineering Offices located at 1105 Terminal Way, Suite 108 in Reno.

Related Documents

Reg. Trans. Imp. Program (RTIP)
 Regional Transportation Plan (RTP)

Schedule

Planning:	Complete
Preliminary Engineering:	2011-2012
Final Design:	2013
Advertise:	2016
Construction:	2016-2017

Latest News

Current activities include:

- Finalizing an Interlocal Agreement with NDOT.
- Review of 30% Design submitted at the January 10th TWG.
- Working with utility companies on utility relocations.
- Landscape Concept - The landscaping stakeholders group met on December 13th and discussed some concepts for design using themes from the local area.

Project Finance Plan

Funding Source:	RRIF (RTC – 5)
Amount RTC Approved:	\$1,300,000
Design:	\$1,217,500
Construction:	\$31,600,000
Right of Way:	\$3,400,000
Total Project Estimate:	\$36,217,500

Construction Traffic Control and Work Schedule Updates

Not applicable

Information is current for: February 2012



STREETS & HIGHWAYS Project Summary Report

I-580/MEADOWWOOD INTERCHANGE

Neil Road to South Virginia Street/South McCarran Boulevard

RTC Project No. 5328

PROJECT MANAGER (PM) CONTACT INFORMATION

Regional Transportation Commission

(RTC) PM:

Michele C. Dennis, P.E.

(775) 335-1861

mdennis@rtcwashoe.com

State of Nevada, Department of
Transportation (NDOT) PM:

Adam T. Searcy, P.E.

(702) 671-8864

asearcy@dot.state.nv.us

Federal Highway Administration
(FHWA) PM:

Andrew H. Soderborg, P.E.

(775) 687-5320

andrew.soderborg@dot.gov

Design Firm (CH2M Hill) PM:

Cynthia M. Potter, P.E.

(775) 329-7300 x 36914

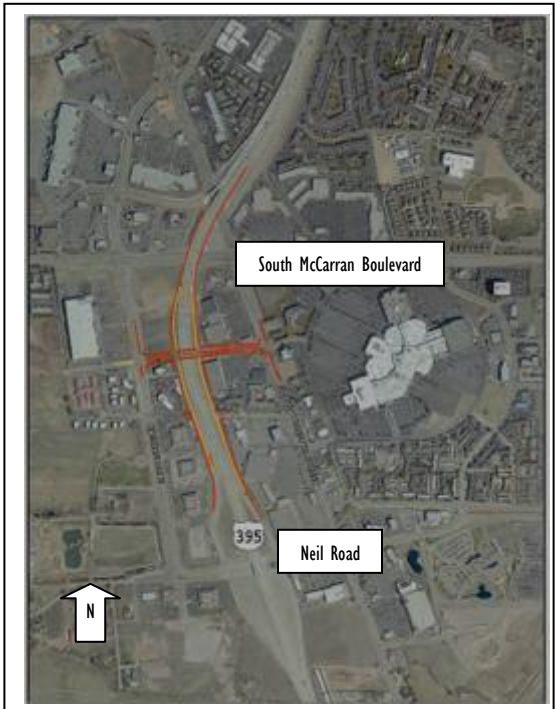
cindy.potter@ch2m.com

Construction Contractor (Meadow
Valley Contractors) PM:

Jade Thomson

(702) 556-9639

jthomson@meadowvalley.com



Project Description & Purpose

This project will reconfigure the existing I-580 Interchange at Neil Road to a split diamond, which will improve the flow of traffic in a critical commercial area in the southwest Truckee Meadows by:

- Constructing a new bridge structure and extending Meadowood Mall Way under the freeway mainline to connect with Kietzke Lane;
- Widening bridge structures at South Virginia Street and South McCarran Boulevard;
- Eliminating the existing southbound off-ramp and northbound on-ramp at Neil Road; and
- Construction of a new southbound off-ramp and northbound on-ramp at Meadowood Mall Way with frontage roads to connect to the southbound on-ramp and northbound off-ramp at Neil Road.

The project vicinity contains several large commercial/retail centers which draw traffic. These centers and the growth occurring and planned in the South Truckee Meadows and Reno/Sparks generate the purpose and need:

- To provide **additional freeway access** between I-580 and regional commercial/retail hub within project vicinity;
- To **reduce traffic volumes** at the South Virginia freeway ramps and at the intersection of South McCarran and South Virginia; and
- To **improve traffic circulation** at several key intersections in the project area, including South McCarran/South Virginia; Kietzke/South McCarran; South Virginia/Meadowood Mall Way; I-580 Ramps/Neil Road.

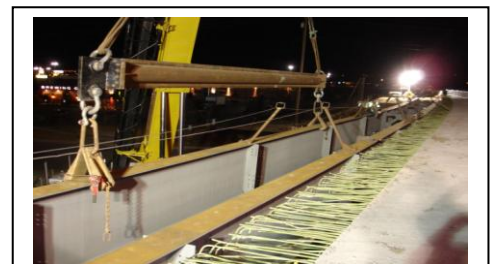
The American Reinvestment and Recovery Act (ARRA) funds are being used for project construction.

Related Documents

Environmental Assessment, October 2005
 Change in Access Request, August 2006
 Regional Transportation Improvement Program (RTIP)
 Regional Transportation Plan (RTP)

Schedule

Planning:	Complete
Preliminary Engineering:	Complete
Final Design:	Complete
Advertise:	January 21, 2010
Construction:	2010 - 2012



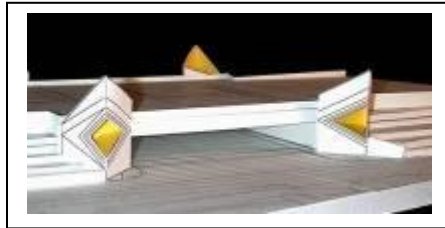


STREETS & HIGHWAYS Project Summary Report

Latest News

Construction of the main structure continues.

The next quarterly informational open house is scheduled for Tuesday, April 3, 2012 from 5:00 p.m. to 6:00 p.m., at the Meadowood Courtyard Super 8, 5851 South Virginia Street, Reno, Nevada.



This project will include several aesthetic components, including custom form-liners and light towers.

Project Finance Plan

Funding Source:	Amount ¹
American Reinvestment and Recovery Act (ARRA):	\$26,000,000
Other Federal Aid ² :	\$8,500,000
Regional Road Impact Fees (RRIF):	\$7,000,000
Indexed Fuel Tax ("RTC-5"):	\$21,300,000
Total Project Estimate:	\$46,500,000

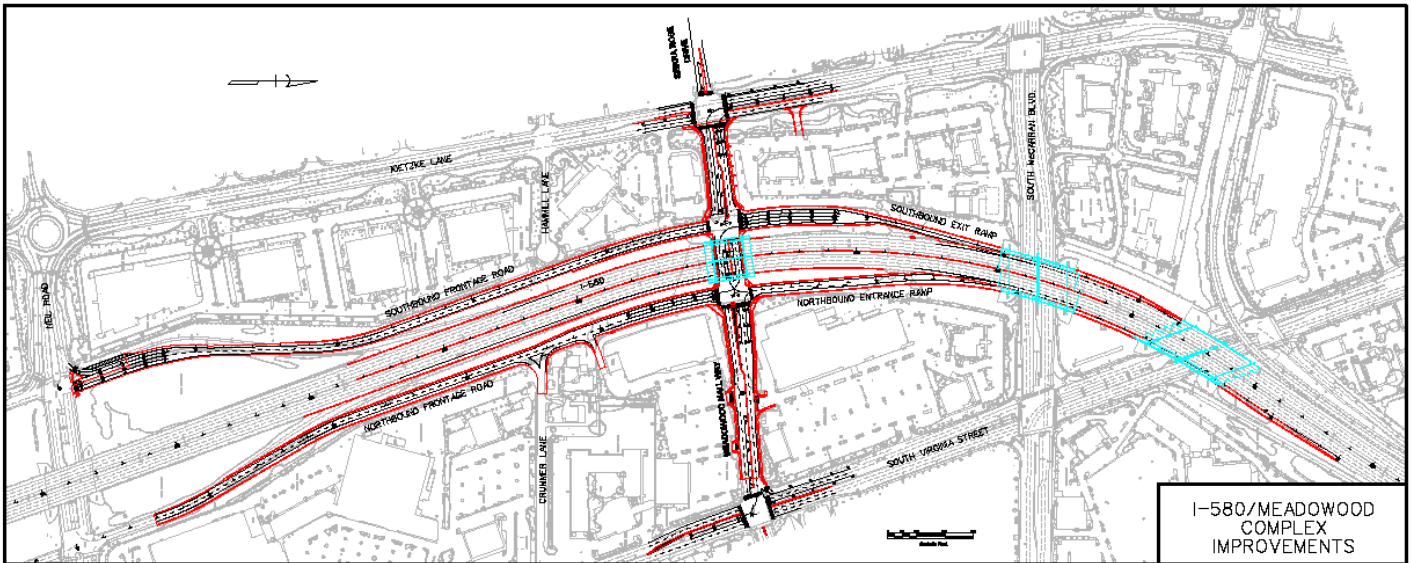
Notes:

1. Rounded
2. Other Federal Aid: Interstate Maintenance Discretionary Funds (IMD); Surface Transportation Program (STP) Washoe County High Priority; High Priority Projects (HPP); and Transportation Community and System Preservation Program (TCSP)

Construction Traffic Control and Work Schedule Updates

Depending on the work location, South Virginia Street or McCarran Boulevard may be reduced to one lane or closed at the point of the freeway overpass. Changing traffic controls will be in place on the freeway mainline from Neil Road to Moana Lane. Lane widths will be reduced and the alignment will shift in both the NB and SB directions. For current traffic control information, please see the RTC's weekly Traffic Control Report at: <http://www.rtcwashoe.com/streets-highways-16>.

Please use caution and observe the 55 mph speed limit throughout the construction zone.



Information is current for: February 2012



Subscribe to www.rtcwashoe.com to receive e-mail updates about this project and other RTC services and programs.



STREETS & HIGHWAYS Project Summary Report

Moana Lane Widening – Virginia Street to I-580 Ramps RTC Project No. 532005

RTC Project Manager (PM): Doug Maloy, P.E.
RTC PM Contact Information: (775) 335-1865
dmaloy@rtcwashoe.com
RTC Engineering Department: (775) 348-0171
 (775) 348-0170 fax
Design Firm: Stantec Consulting
 (775) 850-0777
Construction Contractor: To be determined



Project Description & Purpose

- This project will widen Moana Lane from Virginia Street to I-580 from four (4) lanes to six (6) lanes. The need for this project has been confirmed based on the regional consensus forecast. The purpose of this project is to reduce existing congestion and provide future capacity for this important resort and commuter corridor.
- Reconstruction of the existing roadway in addition to the new added lanes, utility relocations, curb, gutter, sidewalk, and traffic signal equipment is included in the project.

Related Documents

Regional Transportation Plan (RTP)
 Regional Trans. Improvement Program (RTIP)
 Moana Lane Corridor Study (January 2004)
 Moana Lane Alignment Study (June 2004)

Schedule

Planning	Complete
Final design complete:	1 st Qtr. 2012
Advertise (Road Const.):	1 st Qtr. 2012
Construction Start:	2 nd Qtr. 2012
Construction Complete:	4 th Qtr. 2012

Latest News

- Right-of-way acquisition and tenant relocation is proceeding in accordance with RTC Street & Highway Policy.
- Demolition of buildings acquired by the RTC began in November 2011 and will be complete by the end of March 2012.
- Final design will be complete in January 2012. The RTC is working with the Nevada Department of Transportation on alternatives for potential future improvements at the Moana and I-580 interchange.

Project Finance Plan

Funding Source:	(RTC-5 Bonds)
Design cost:	\$1.2 million
Right of Way Estimate:	\$18 million
Construction Estimate:	\$17-\$18 million

Construction Traffic Control and Work Schedule Updates

For current traffic control information, please see the RTC's weekly Traffic Control Report at:
<http://www.rtcwashoe.com/streets-highways-16>.

Information is current for: February 2012



STREETS & HIGHWAYS Project Summary Report

North Virginia / North McCarran Intersection Sierra to N McCarran

PWP No. TBD / RTC Project No. 512010

RTC Project Manager (PM): Blaine Petersen, P.E., PTOE

RTC PM Contact Information: (775) 335-1871
bpetersen@rtcwashoe.com

RTC Engineering Department: (775) 348-0171
(775) 348-0170 fax

Design Firm: Parsons Brinckerhoff
775-853-7400

Construction Contractor: To be determined



Project Description & Purpose

The North Virginia Street at North McCarran Boulevard intersection delay has increased and this intersection has appeared on the top ten high crash location list numerous times.

This project will evaluate the best option for intersection improvements between traffic signal modification and roundabout installation.

The best option will move forward into final design.

Related Documents

Reg. Trans. Imp. Program (RTIP)
Regional Transportation Plan (RTP)
2005 Conceptual Study by KHA

Schedule

Public Meeting:	To be determined
Design:	2012
Advertise:	To be determined
Bid Opening:	To be determined
Construction Start:	To be determined
Construction Complete:	To be determined

Latest News

A Professional Services Agreement (PSA) is scheduled for Board approval on February 3, 2012.

Project Finance Plan

Funding Source: Regional Road Impact Fee	
Amount RTC Approved:	\$4,000,000
Preliminary Design	\$308,000
Final Design	To be determined
Construction	To be determined
Total Project Estimate:	\$4,000,000

Construction Traffic Control and Work Schedule Updates

For current traffic control information, please see the RTC's weekly Traffic Control Report at:
<http://www.rtcwashoe.com/streets-highways-16>.

Information is current for: February 2012



Subscribe to www.rtcwashoe.com to receive e-mail updates about this project and other RTC services and programs.



STREETS & HIGHWAYS Project Summary Report

Plumb Lane / Terminal Way ITS Project

PWP No. WA-2010-11 / RTC Project No. 532012

RTC Project Manager (PM): Blaine Petersen, P.E., PTOE

RTC PM Contact Information: (775) 335-1871
bpetersen@rtcwashoe.com

RTC Engineering Department: (775) 348-0171
(775) 348-0170 fax

Design Firm: Kimley-Horn

Construction Contractor: To be determined



Project Description & Purpose

- This project will install new detection at the intersection of Plumb Lane and Harvard Way and the intersection of Plumb Lane at Kietzke Lane to replace the malfunctioning video detection.
- Other improvements will include interconnect between Kietzke Lane and the freeway; interconnect on Terminal Way from Plumb Lane to Mill Street.
- Installation of Pan/Tilt/Zoom cameras to monitor traffic flows.

Related Documents

Regional Transportation Plan
Traffic Analysis and Conceptual Design

Schedule

Planning:	Complete
Preliminary Engineering:	Winter 2011
Final Design:	Spring 2012
Advertise:	April 2012
Construction:	Summer 2012

Latest News

The RTC Board approved the design agreement for the amended project at the December 16, 2011 Board meeting.

Currently collecting survey and utility information for design.

Project Finance Plan

Funding Source:	Regional Road Impact Fee (RTC – 5)
Amount RTC Approved:	\$5,000,000
Design & EDC	\$179,226
Construction	\$1,100,000
Total Project Estimate:	\$1,200,000

Construction Traffic Control and Work Schedule Updates

For current traffic control information, please see the RTC's weekly Traffic Control Report at:
<http://www.rtcwashoe.com/streets-highways-16>.

Information is current for: February 2012

Subscribe to  at www.rtcwashoe.com to receive e-mail updates about this project and other RTC services and programs.



STREETS & HIGHWAYS Project Summary Report

Pyramid & McCarran Intersection

RTC Project No. 540082

RTC Project Manager (PM): Scott Gibson, P.E.

RTC PM Contact Information: (775) 335-1874
sgibson@rtcwashoe.com

RTC Engineering Department: (775) 348-0171
(775) 348-0170 fax

Design Firm: Parsons
(775) 885-2280

Construction Contractor: To be determined



Project Scope

- Environmental Impact Statement (EIS) including alternative selection, alignment selection, public outreach, and agency coordination.
- Acquire right-of-way sufficient to build the necessary improvements.
- Increase the capacity of the intersection to Policy Level of Service (LOS) "E" without degrading LOS at other intersections within the study area below LOS "E" through year 2030.

Purpose and Need

- This project is proposed to meet the short- and long-term transportation needs of the project area in response to regional growth.
- The purpose of the project is two-fold:
 - Decrease traffic congestion to meet community LOS standards
 - Improve Safety
- The purpose of the project is based on the existing and projected transportation needs and deficiencies in the Pyramid and McCarran corridors.

Related Documents

Pyramid Hwy Corridor Management Plan (Nov 2001)
 I-80 to US-395 Connector Project Study (2003)
 RTC Regional Transportation Plan (November, 2008)
 Current Reg. Trans. Improvement Plan (RTIP)

Schedule

Draft EIS:	3 rd Qtr. 2011
Record of Decision:	4 th Qtr. 2012
Final Design Complete:	2 nd Qtr. 2013
Begin Construction:	1 st Qtr. 2015

Latest News

The Draft Environmental Impact Statement is currently undergoing review by RTC staff and NDOT Environmental Staff. Next steps in the review process:

- FHWA Review – January/February
- Public Hearing – May 2012
- Final EIS Review – May 2012
- Record of Decision – December 2012

RTC staff will begin developing a final agreement with NDOT on responsibilities for executing the construction and ROW acquisition on the project.

Project Finance Plan

Funding Sources: CMAQ*, Fuel Tax, RTC-5 Bonds, Federal Pyramid Highway Corridor Earmarks

Amount RTC Approved:	\$5.5 million
Total Project Estimate:	\$61m-\$71m

Note: Eligible for RTC-5 Bond funding.
 All costs in 2009 dollars

*CMAQ – Congestion Mitigation Air Quality

**EDC – Engineering During Construction
 (Construction Management, Inspection, Testing)

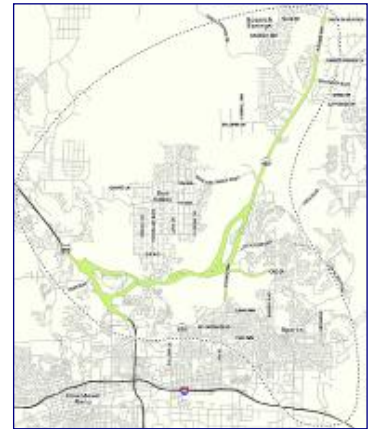
Information is current for: February 2012



STREETS & HIGHWAYS Project Summary Report

Pyramid Highway / US 395 Connector EIS Study RTC Project No. 520062

RTC Project Manager (PM): Doug Maloy, P.E.
RTC PM Contact Information: (775) 335-1865
dmaloy@rtcwashoe.com
RTC Engineering Department: (775) 348-0171
 (775) 348-0170 fax
Design Firm: Jacobs Engineering
 (775) 850-5100
Construction Contractor: To be determined



Project Description & Purpose

- Environmental Impact Statement (EIS) including alternative selection, preliminary engineering, public outreach, agency coordination, environmental analysis, and documentation.
- Conversion of approximately 6 miles of existing Pyramid Highway (SR 445) from an arterial to a controlled access freeway.
- Development of new controlled access freeway from US 395 to Pyramid Highway with improvements east to Vista Boulevard.
- Project will alleviate current and future congestion in Sparks and Spanish Springs, serve future growth areas, and provide additional east/west connectivity.

Related Documents

Pyramid Corridor Master Plan 2001
 Reg. Trans. Imp. Program (RTIP)
 Regional Transportation Plan (RTP)

Schedule

Draft EIS:	1 st Qtr. 2012
Final EIS:	4 th Qtr. 2012
Record of Decision:	3 rd Qtr. 2013
Final Design:	To be determined
Construction Start:	To be determined

Latest News

Details on this study are available for viewing on the RTC website, www.rtcwashoe.com.

Alternatives screening is complete. Preparation of the Draft Environmental Impact Statement (DEIS) is ongoing. The revised schedule is for submittal of the DEIS to NDOT for their review and comment in the 1st Quarter of 2012.

Project Finance Plan

Funding Source: State Gas Tax Federal SAFETEA-LU

Amount RTC Approved:	\$8.2M
Total Project Estimate:	\$600M*

Notes:
 *Regional Transportation Plan Estimate. Preliminary Design & Environmental Clearance estimated \$8.2M. Final Design, right-of-way, and construction estimates unknown pending completion of Draft Environmental Impact Statement.

Construction Traffic Control and Work Schedule Updates

Not Applicable

Information is current for: February 2012



STREETS & HIGHWAYS Project Summary Report

S McCarran Boulevard – Phase I Virginia Street to Mira Loma Drive PWP-WA-2011-163 / RTC Project No. 542017-P1

RTC Project Manager (PM): Brenda Lee, P.E.

RTC PM Contact Information: (775) 335-1863
blee@rtcwashoe.com

RTC Engineering Department: (775) 348-0171
(775) 348-0170 fax

Design Firm: Wood Rodgers, Inc.
(775) 823-4068

Construction Contractor: Granite Construction Company
(775) 358-8792



Project Description & Purpose

The overall project is to provide the improvements needed as identified in the SE McCarran Corridor Study and to incorporate NDOT's pavement rehabilitation project. This phase of the project will include the following:

- Pavement rehabilitation from Virginia Street to Mira Loma Drive.
- Widening from 4 lanes to 6 lanes between Longley Lane to Mira Loma Drive, including a shared use path.

The pavement rehabilitation will upgrade the pavement conditions for the future years to come with no change to the existing configurations. Widening of the roadway will relieve congestion, increase safety, and improve aesthetics.

Related Documents

- Reg. Trans. Imp. Program (RTIP)
- Regional Transportation Plan (RTP)
- SE McCarran Corridor Study

Schedule

Planning:	Complete
Preliminary Design:	Complete
Final Design:	Complete
Advertise:	Complete
Construction:	Winter Shutdown

Latest News

Construction started June 20, 2011, and is scheduled to be complete by Fall 2012. There will be minor pavement work between Mira Loma Drive and Perro Lane for the purpose of transitioning from the existing 4 lanes configuration to tie in to the new 6 lanes configuration south of Mira Loma Drive. The work schedule is as follows:

Jun 2011 to Sep 2011

Virginia to Longley (excluding Longley intersection) - storm drain improvements between Mira Loma and Perro. It is anticipated that the substantial completion for this portion of work will be September 9; about one week ahead of schedule.

Sep 2011 to Mar 2012

Winter Shutdown (roadway open with no construction traffic control)

April 2012 to Sep 2012

Longley intersection to Perro.

Project Finance Plan

Funding Source: RRIF (RTC-5) & NDOT funds

Amount RTC Approved:	\$10,200,000
Amount by NDOT:	\$6,000,000
Total Project Estimate:	\$16,200,000

Notes:

Design is estimated at \$1.5M; Right-of-way is estimated at \$0.2M; Construction costs (including construction administration) are estimated at \$14.5M.

Construction Traffic Control and Work Schedule Updates

The roadway is open with no construction traffic control.

Information is current for: February 2012



Subscribe to

at www.rtcwashoe.com to receive e-mail updates about this project and other RTC services and programs.



STREETS & HIGHWAYS Project Summary Report

S McCarran Boulevard – Phase II Mira Loma Drive to Greg Street RTC Project No. 542017-P2

RTC Project Manager (PM): Brenda Lee, P.E.
RTC PM Contact Information: (775) 335-1863
blee@rtcwashoe.com
RTC Engineering Department: (775) 348-0171
 (775) 348-0170 fax
Design Firm: Wood Rodgers, Inc.
 (775) 823-4068
Construction Contractor: To be determined



Project Description & Purpose

The overall project is to provide the improvements needed as identified in the SE McCarran Corridor Study and to incorporate NDOT’s pavement rehabilitation project. This phase of the project will include the following:

- Pavement rehabilitation from Mira Loma Drive to 200’ south of Equity Avenue.
- Widening from 4 lanes to 6 lanes between Mira Loma Drive and Greg Street, including a shared use path.
- Aesthetics and soundwalls between Longley Lane & Greg Street.

The pavement rehabilitation will upgrade the pavement conditions for the future years to come with no change to the existing configurations. Widening of the roadway will relieve congestion, increase safety, and improve aesthetics.

Related Documents

Reg. Trans. Imp. Program (RTIP)
 Regional Transportation Plan (RTP)
 SE McCarran Corridor Study

Schedule

Planning:	Complete
Preliminary Design:	Complete
Final Design:	2 nd Qtr 2012
Advertise:	2014
Construction:	2014

Latest News

This phase of the project is in final design stage. Current activities include:

- Finalizing an Interlocal Agreement with NDOT.
- Working on final design.
- Working with utility companies on utility relocations.
- Procuring professional services for right-of-way acquisition.

The project schedule is dependent on right-of-way acquisition to be performed by NDOT which is anticipated to take 24 months.

Project Finance Plan

Funding Source: RRIF (RTC-5) & NDOT funds

Amount RTC Approved:	\$16,735,000
Amount by NDOT:	\$6,000,000
Total Project Estimate:	\$22,735,000

Notes:

Design is estimated at \$1.5M; Right-of-way is estimated at \$6.2M; Construction costs (including utility relocation and construction administration) are estimated at \$11M to \$15M.

Construction Traffic Control and Work Schedule Updates

The roadway is open with no construction traffic control.

Information is current for: February 2012



STREETS & HIGHWAYS Project Summary Report

SouthEast Connector RTC Project No. 532011

RTC Project Manager (PM): Garth Oksol, P.E.
RTC PM Contact Information: (775) 332-2137
goksol@rtcwashoe.com
RTC Engineering Department: (775) 348-0171
 (775) 348-0170 fax
Design Firm: Stantec Consulting, Inc.
 (775) 850-0777
Construction Contractor: To be determined



Project Description & Purpose

The SouthEast Connector (SEC) is a regional roadway that will run from the intersection of Sparks Boulevard and Greg Street in the north, to South Meadows Parkway and Veterans Parkway in the south. It is a six lane non-elevated roadway with multi-use paths.

The SEC is a vital link that connects the south part of the Truckee Meadows with the east part of the Truckee Meadows. The only other continuous link that serves this purpose is US-395 to I-80, which is reaching critical capacity. All other regional roads in the southeast part of the Truckee Meadows are also reaching critical capacity. The SEC provides much needed relief to the entire transportation network.

The SEC is a regional roadway that has been planned and discussed for over 40 years. Developments in south Reno and Sparks have been approved because the SEC is on the Regional Transportation Plan. Existing new roadways have been approved for future capacity needs assuming the SEC is built. If the SEC is not built, those roadways do not have the ability to handle additional capacity without major impacts to homes, apartments, businesses, etc.

Related Documents

Plan Line Study for the SouthEast Connector (January 20, 2009)
 Reg. Trans. Imp. Program (RTIP)
 Regional Transportation Plan (RTP)

Schedule

Planning:	January 2009
Prelim. Engineering:	Fall 2011
Final Design:	Fall 2012
Advertise:	To be determined
Construction:	To be determined

Latest News

The Section 404 Clean Water Act Permit with the US Army Corp of Engineers was submitted on May 31, 2011. The responses to Public Comments were submitted to the US Army Corps on November 16, 2011. Both the Permit and response to Public Comments are available on the rtcwashoe.com website.

The latest flood mitigation model was turned into the Truckee River Flood Management Agency on October 11, 2011 for review.

Project Finance Plan

Funding Source: RTC-5 Fuel Tax Bonding

Preliminary Engineering:	\$3,236,000.00
Final Design:	\$9-\$10M
Right-of-Way:	\$39-\$44M
Construction:	\$106-\$118M
Total Project Estimate:	\$154-\$167M*

Construction Traffic Control and Work Schedule Updates

For current traffic control information, please see the RTC's weekly Traffic Control Report at: <http://www.rtcwashoe.com/streets-highways-16>.

Information is current for: February 2012



Subscribe to

at www.rtcwashoe.com to receive e-mail updates about this project and other RTC services and programs.



STREETS & HIGHWAYS Project Summary Report

Traffic Signal Timing 2 (08/09)

RTC Project No. 540042

RTC Project Manager (PM): Jim Poston, P.E., PTOE
RTC PM Contact Information: (775) 332-2139
jposton@rtcwashoe.com
RTC Engineering Department: (775) 348-0171
 (775) 348-0170 fax
Design Firm: Iteris, Inc.
 (949) 270-9400
Construction Contractor: Not applicable



Project Description & Purpose

- Collect traffic & signal data
- Evaluate existing signal timing & develop new timing at 150 intersections
- Implement timing in the field
- Fine-tune timing
- Conduct before-after studies

Related Documents

Reg. Trans. Imp. Program (RTIP)
 Regional Transportation Plan (RTP)

Schedule

Public Meeting:	N/A
Design:	Dec 2009
Advertise:	N/A
Bid Opening:	N/A
Implementation Start:	Spring 2011
Implementation Complete:	Mar 2012

Latest News

New signal timings have been implemented and traffic operations are being monitored.

“After” data has been collected and is being analyzed.

Informational website is in development.

Project Finance Plan

Funding Source:	Federal-CMAQ
Amount RTC Approved:	\$484,945
Total Project Estimate:	\$484,945
Notes:	None

Construction Traffic Control and Work Schedule Updates

For current traffic control information, please see the RTC’s weekly Traffic Control Report at:
<http://www.rtcwashoe.com/streets-highways-16>.

Information is current for: February 2012



STREETS & HIGHWAYS Project Summary Report

Traffic Signal Timing 3 (09/10)

RTC Project No. 542016

RTC Project Manager (PM): Blaine Petersen, P.E., PTOE
RTC PM Contact Information: (775) 335-1871
bpetersen@rtcwashoe.com
RTC Engineering Department: (775) 348-0171
 (775) 348-0170 fax
Design Firm: Orth-Rodgers and Associates, Inc.
 (702) 233-4060
Construction Contractor: Not applicable



Project Description & Purpose

- Collect traffic & signal data
- Evaluate existing signal timing & develop new timing at 140 intersections
- Implement timing in the field
- Fine-tune timing
- Conduct before-after studies

Related Documents

Reg. Trans. Imp. Program (RTIP)
 Regional Transportation Plan (RTP)

Schedule

Planning:	Complete
Preliminary Engineering:	Complete
Final Design:	Summer 2011
Advertise:	N/A
Implementation Start:	Fall 2011

Latest News

Signal timing development is underway with implementation scheduled for January 2012 through April 2012.

Project Finance Plan

Funding Source:	Federal-CMAQ
Amount RTC Approved:	\$450,000
Total Project Estimate:	\$427,995.47
Notes:	None

Construction Traffic Control and Work Schedule Updates

For current traffic control information, please see the RTC's weekly Traffic Control Report at:
<http://www.rtcwashoe.com/streets-highways-16>.

Information is current for: February 2012



STREETS & HIGHWAYS Project Summary Report

Traffic Engineering Spot Intersection Improvement 1 (10-11) RTC Project No. 542020

RTC Project Manager (PM): Blaine Petersen, P.E., PTOE
RTC PM Contact Information: (775) 335-1871
bpetersen@rtcwashoe.com
RTC Engineering Department: (775) 348-0171
 (775) 348-0170 fax
Design Firm: Atkins (formerly PBS&J, Inc.)
 (775) 828-1622
Construction Contractor: PAR Electrical Contractors
 (775) 329-0407



Project Description & Purpose

This project will improve traffic flow at nine intersections in the Reno-Sparks area. These improvements were identified and agreed upon by the local agencies.

The purpose of the project is to make improvements that provide substantial benefits to traffic flow at the intersections.

The project includes two new traffic signals – Veterans Parkway at Steamboat Parkway and Steamboat Parkway at Damonte Ranch Parkway.

Related Documents

Reg. Trans. Imp. Program (RTIP)
 Regional Transportation Plan (RTP)
 Traffic Signal Timing 1 Project

Schedule

Planning:	Complete
Preliminary Engineering:	Complete
Final Design:	April 2011
Advertise:	May 2011
Construction:	July 2011

Latest News

Most underground work, paving and striping are complete.

Work began again January 24, 2012 at the intersections of Veterans Parkway and Steamboat Parkway and the intersection of Damonte Ranch and Steamboat Parkway to install mast arms.

Mid February, work will move to the intersection of Greenbrae at McCarran.

Project Finance Plan

Funding Source:	Regional Road Impact Fee (RTC-5)
Amount RTC Approved:	\$ 1,500,000
Total Project Estimate:	\$1,400,000

Construction Traffic Control and Work Schedule Updates

For current traffic control information, please see the RTC's weekly Traffic Control Report at: <http://www.rtcwashoe.com/streets-highways-16>.

Information is current for: February 2012



STREETS & HIGHWAYS Project Summary Report

Traffic Engineering Spot Intersection Improvement 2 (11-12) RTC Project No. 542025

RTC Project Manager (PM): Blaine Petersen, P.E., PTOE
RTC PM Contact Information: (775) 335-1871
bpetersen@rtcwashoe.com
RTC Engineering Department: (775) 348-0171
 (775) 348-0170 fax
Design Firm: Traffic Works
 (775) 544-9432

Construction Contractor: To be determined



Project Description & Purpose

This project will improve traffic flow at thirty two (32) intersections in the Reno-Sparks and Washoe County area. These improvements were identified and agreed upon by the local agencies.

The purpose of the project is to make improvements that provide substantial benefits to traffic flow at the intersections.

The project includes installation of new Flashing Yellow Arrow (FYA) indications for existing protected only left turn lanes and installation of inductive loops to better detect vehicles.

Related Documents

Reg. Trans. Imp. Program (RTIP)
Regional Transportation Plan (RTP)

Schedule

Planning:	Complete
Preliminary Engineering:	2011
Final Design:	Winter 2011
Advertise:	Winter 2011/2012
Construction:	Spring 2012

Latest News

Bids were opened December 7, 2011 with Merit Electric Company the apparent low bidder. The total number of intersections has dropped from 48 to 30 as greater effort will be needed to complete the work at the higher priority intersections.

A preconstruction meeting was held January 25, 2012.

Project construction is scheduled to begin February 20, 2012

Project Finance Plan

Funding Source:	Regional Road Impact Fee (RTC-5)
Amount RTC Approved:	\$ 1,500,000
Design & EDC:	\$318,600
Construction:	\$1,191,506

Construction Traffic Control and Work Schedule Updates

For current traffic control information, please see the RTC's weekly Traffic Control Report at: <http://www.rtcwashoe.com/streets-highways-16>.

Information is current for: February 2012



STREETS & HIGHWAYS Project Summary Report

Vista Boulevard Soundwalls (North Los Altos Pkwy to Wingfield Hills Pkwy) PWP No. WA-2009-328 / RTC Project No. 522007

RTC Project Manager (PM): Marchon Miller
 RTC PM Contact Information: (775) 335-1867
mmiller@rtcwashoe.com
 RTC Engineering Department: (775) 348-0171
 (775) 348-0170 fax
 Design Firm: Atkins
 (775) 828-1622
 Construction Contractor: Meadow Valley Contractors
 (775) 284-4496



Project Description & Purpose

The purpose of this project is to construct new Soundwalls in 5 locations along the east side of Vista Boulevard between Los Altos Boulevard and Wingfield Hills Parkway.

Related Documents

Reg. Trans. Imp. Program (RTIP)
 Regional Transportation Plan (RTP)
 Website- www.rtcwashoe.com/streets-highways

Schedule

Planning:	Complete
Preliminary Eng:	Complete
Final Design:	July 2011
Advertise:	August 2011
Construction Start:	October 2011
Construction Complete:	To be determined

Latest News

First phase of the wall construction is completed. Staining of walls and landscaping will begin in the spring of 2012.

Project Finance Plan

Funding Source:	RRIF(RTC-5)
Amount RTC Approved:	\$2,000,000
Total Construction Estimate:	\$1,026,231

Note: Project is fully funded by RTC-5 funds.

Construction Traffic Control and Work Schedule Updates

For current traffic control information, please see the RTC's weekly Traffic Control Report at: <http://www.rtcwashoe.com/streets-highways-16>.

Information is current for: February 2012