



**e-News Brief**  
*An update of current RTC issues*

RTC e-News Brief for February 26, 2009. This e-newsletter was created to keep you informed about key activities and issues pertaining to your RTC. I encourage you to share this information with your board members, citizen advisory groups, colleagues, employees and others who may find this information useful. If you would like additional information about a topic in this update, or another topic of interest, please let me know.

RTC staff is also available to present any RTC transportation related topic(s) to your organization, company employees, or business and citizen groups. Contact Michael Moreno, RTC Speakers Bureau @ [mmoreno@rtcwashoe.com](mailto:mmoreno@rtcwashoe.com) to schedule a presentation.

Derek Morse, P.E., Interim Executive Director  
Regional Transportation Commission  
P.O. Box 30002, Reno, NV 89520  
PH: 775.348.0400 Fax: 775.324-3503  
Email: [dmorse@rtcwashoe.com](mailto:dmorse@rtcwashoe.com)  
[www.rtcwashoe.com](http://www.rtcwashoe.com)

**In this issue:**

**RTC Board Approves Additional Cost Reductions**  
**RTC Transit Operating Statistics December 2008**  
**Transit Pass Store Online**  
**Gas Line Leak at RTC CITICENTER**  
**“The Road Ahead with RTC” on KOLO-TV**

**RTC Board Approves Additional Cost Reductions**

With the economic downturn being more severe than was expected and continued decreasing sales tax revenues, the RTC Board approved additional cost saving measures at their January 16 meeting. The RTC Board accepted staff recommendations to implement elimination of performance bonuses, longevity bonuses, merit increases, and elimination of overtime for RTC staff. These cost savings total approximately \$500,000 over the next six months and became effective January 2009. Continuing these and other savings previously implemented in to Fiscal Year 2010, \$2.1 million will be saved annually. This cost reduction would fund 32% of the \$6.7 million Public Transportation Program shortfall.

Additionally, a reallocation of sales tax revenues was approved between the Street and Highway Program to the Public Transportation Program in the amount of \$1.5 million. The reallocation will be funded through the agency-wide cost reductions and would result in no reduction in the number of Fiscal Year 2010 road projects.

In other actions, the RTC board approved reducing RTC INTERCITY trips from nine to five and the reduction of one RTC SIERRA SPIRIT bus on the route from three to two, as well as a shortening of the route. These cuts will become effective on March 1.

At the February RTC Board meeting, commissioners will consider additional transit cuts to its transit services in an on-going effort to address the Public Transportation shortfall.

### **RTC Transit Operating Statistics December 2008**

During the last 12 months, there were 9.09 million transit system rides. On October 26, 2008, service was reduced by approximately 6.8% and the allowed transfer time was reduced from 120 to 90 minutes. For December, there were 683,567 rides 0.3% lower than last December. Average daily ridership at 22,323 was 3.0% lower than last year. Service hours were down 7.1% from last year. Adult ridership was down 5.5%. Youth ridership was up 1.5%. Senior & disabled ridership was up 8.4%.

RTC INTERCITY ridership at 4,405 was up 17% compared with last year. Productivity at 10.8 passengers per service hour was up 37% compared with last year.

RTC SIERRA SPIRIT ridership was 38,702 up 6.9% over last year and the highest December total ever.

The December 2008 RTC Transit Operating Statistics report is included in this e-News Brief.

### **Transit Pass Store Online**

RTC transit customers can now purchase bus passes online. The RTC has made it more convenient for bus riders to purchase bus passes online from the convenience of their home or workplace. Bus passes available for purchase include RTC RIDE 7-Day; 31-Day and 10-Ride; RTC INTERCITY 10-Ride and RTC ACCESS 10-Trip Ticket Book and RTC ACCESS on RTC RIDE 10-Ride Pass. Visit [rtcwashoe.com](http://rtcwashoe.com) to purchase passes.

## **Gas Line Leak at RTC CITICENTER**

Last week, the service line to the north building at RTC CITICENTER was leaking gas. The gas line and the north building were shut down until repairs could be completed. The leak was repaired, but another leak was discovered. When that leak was repaired, a third leak was found. We have shut down repair activity and considered options, including gas line replacement, conversion of gas to electric heat, and closing the north building during winter months.

The Executive Director has authorized replacement of the gas line. The bid solicitation document has been prepared and issued. Additional updates will be provided as work progresses. The south building has not been affected by the leak and remains open.

## **“The Road Ahead with RTC” on KOLO-TV**

“The Road Ahead with RTC” airs on Tuesdays at 6:20 a.m. during “Daybreak.” This weekly news segment features experts discussing a wide range of transportation issues. Following each broadcast, webcasts of each interview will be available on [kolotv.com](http://www.kolotv.com) for at least one month. To view interviews, click on this link: <http://www.kolotv.com/rtc>.

Scheduled interviews:

- February 3: RTC-5 Approval Would Create Jobs
- February 10: What RTC-5 Means to the Construction Industry
- February 17: RTC Reduces Expenses to Preserve Services
- February 24: Federal Stimulus Package Impacts for the RTC
- March 3: Pyramid Hwy/US 395 Connection Project Open House

**This is your RTC.**



**REGIONAL TRANSPORTATION COMMISSION**

*Public Transportation • Streets and Highways • Planning*

# **RTC TRANSIT OPERATING STATISTICS**

**RTC RIDE  
RTC INTERCITY  
RTC SIERRA SPIRIT**

**December 2008**

# RTC TRANSIT OPERATING STATISTICS REPORT

December 2008

## TABLE OF CONTENTS

RTC Transit Highlights .....	Page ii
RTC Transit Summary.....	Page iii
System Reports.....	Page 1
Route Comparison Data.....	Page 4
Economic Data .....	Page 5
Monthly Operating Statistics.....	Page 8
RTC INTERCITY .....	Page 22
RTC SIERRA SPIRIT .....	Page 24

# RTC TRANSIT HIGHLIGHTS

## December 2008

### RTC Transit

There were 9.09 million rides over the last twelve months. This is 2.6% higher than the previous twelve months. There were 683,567 rides this month, 0.3% lower than last December. Weighted average daily ridership at 22,323 was 3.0% lower than last December. There were two more weekdays, one less Saturday, and one less Sunday this month compared with last year. RVH is down 7.1% compared with last year. Productivity at 30.5 passengers per service hour is up 7.2% compared with last year.

### External Impacts on Ridership

According to AAA, retail gas prices hit an all time record of \$4.22 on June 22, 2008. This is over a dollar higher than the previous year. However, on December 14 it fell to \$1.87, the lowest in Reno in five years. Recently it has begun to slowly increase.

On October 26, 2008, service was reduced by around 6.8% and transfer time was reduced from 120 to 90 minutes. Routes 11X and 55 were eliminated. Span of service and/or frequency were reduced for most all routes. RTC CENTENNIAL PLAZA opened and replaced RTC CITISTATION. These cuts were in addition to a 1.6% service reduction on May 5, 2008, and fare increases on the same day for adult, senior, and disabled riders.

Climate was slightly better this month compared with last December. Average temperature at 34.3°F was 0.3°F warmer than last year. There were eight days of precipitation both this month and last year; however, precipitation occurred on four weekdays this month compared with seven weekdays last year.

Reno-Sparks employment has slowed down recently after peaking at 220K jobs in July. However, the unemployment rate has been over 6% since January and preliminary data shows 7.8% in November, the highest since January 1993. **Nevada's preliminary unemployment rate of 7.9% in November is the highest since February 1985.** While area employment and population have increased over the years, a lot of that growth is occurring outside the existing transit service area. A US Census Bureau report indicates a slowdown in local population growth as well.

# RTC TRANSIT SUMMARY

December 2008

## RTC Transit Fare Categories

- Adult ridership was down 5.5% compared with last year (page 14). **Adult ridership made up only 57% of total ridership, the lowest percentage ever.** By comparison, in December 1996 adult ridership made up 72% of total ridership. There were 77,170 fewer adult rides this month compared with December 1996.
- Youth ridership was up 1.5%.
- Senior & disabled ridership was up 8.4%. **Senior & disabled ridership made up 31% of total ridership this month the highest percentage ever.** This is getting close to a third of all ridership.
- Pass ridership increased 8.2% compared with last year while cash ridership fell 8.3%. **Total pass ridership** (including estimated transfers for stored ride passes and flow through) **now makes up 55% of all ridership, the second highest percentage ever.**
- On October 26, 2008, the allotted time on transfers was reduced from 120 to 90 minutes. The transfer rate was 56% this month (i.e., transfers are used 56 times for every 100 cash and stored ride pass ride). **This is the second lowest rate since December 2005.** In February 2003 the transfer time was increased from 90 minutes to 120 minutes, and in June 2004, round-tripping on any route in any direction was allowed.

## RTC INTERCITY

- There were 4,405 rides this month, up 17% compared with last December (page 22). **At 10.8 passengers per service hour, productivity is 37% higher than last December and is the highest rate for December.**
- **There were 58,430 rides over the last twelve months, up 37% compared with the previous twelve months.**

## **RTC SIERRA SPIRIT**

- There were 38,702 rides this month, up 6.9% compared with last December (page 24). **This is the highest December ridership ever.** RTC SIERRA SPIRIT has the fifth highest ridership in the system. **Productivity at 33.3 passengers per service hour is up 22% and is the highest rate for December.** This is the sixth highest rate in the system.
- **There were 496,277 rides over the last twelve months, up 24% over the previous twelve months.**

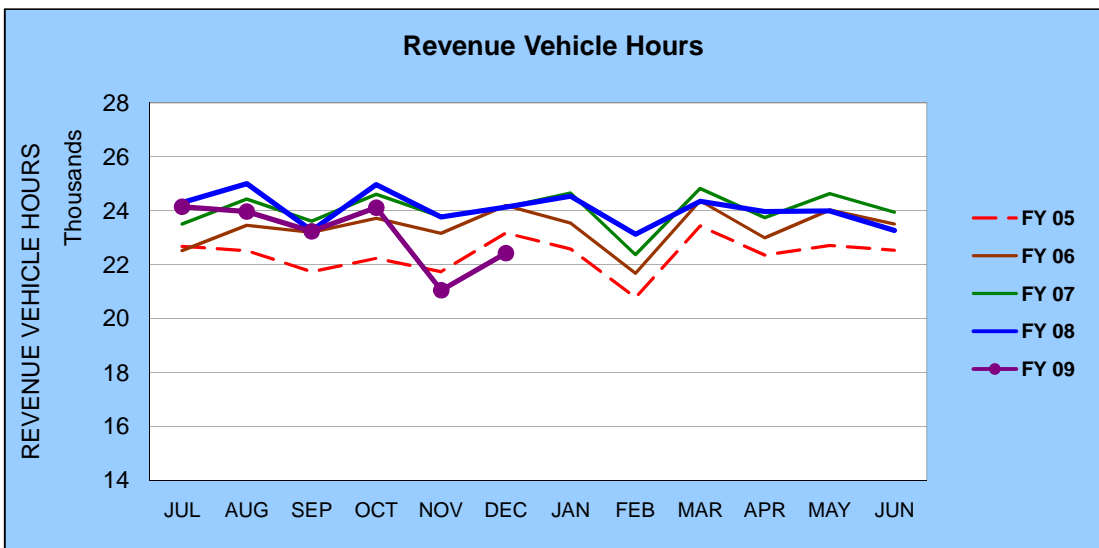
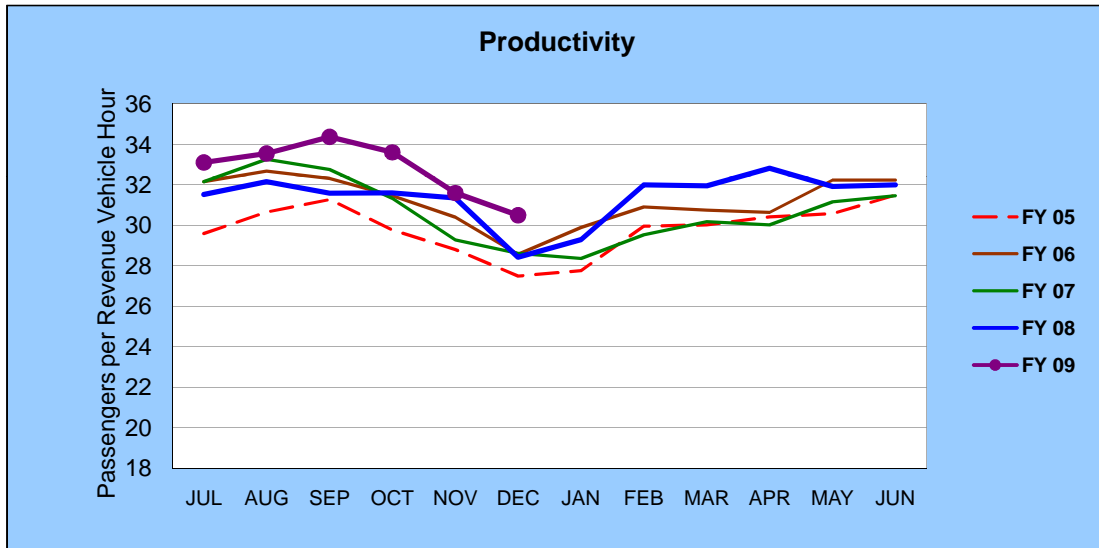
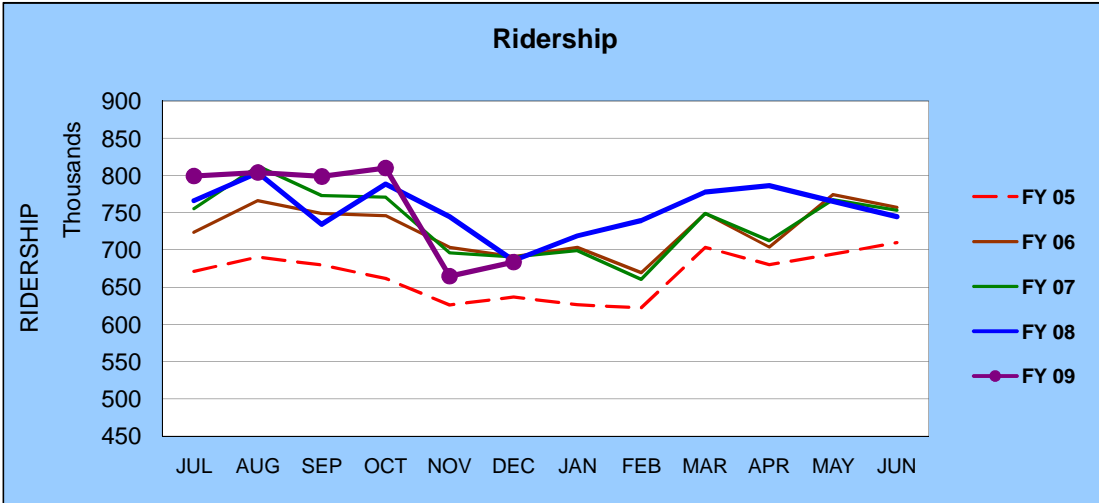
## RTC Transit Operating Statistics

<b>RTC Transit</b>				
<b>ROLLING 12 MONTH RIDERSHIP COMPARISON</b>				
<b>Most Recent 12 Months</b>		<b>Percent Change</b>	<b>Previous 12 Months</b>	
<b>Month</b>	<b>Ridership</b>		<b>Month</b>	<b>Ridership</b>
JAN 08	718,890	2.8%	JAN 07	699,144
FEB 08	739,730	12.0%	FEB 07	660,485
MAR 08	777,928	3.9%	MAR 07	749,001
APR 08	786,548	10.4%	APR 07	712,503
MAY 08	765,501	-0.3%	MAY 07	767,594
JUN 08	744,594	-1.1%	JUN 07	753,256
JUL 08	798,980	4.3%	JUL 07	766,064
AUG 08	803,968	0.0%	AUG 07	803,655
SEP 08	798,438	8.7%	SEP 07	734,293
OCT 08	809,811	2.7%	OCT 07	788,821
NOV 08	664,631	-10.7%	NOV 07	744,646
DEC 08	683,567	-0.3%	DEC 07	685,863
<b>TOTAL</b>	<b>9,092,586</b>	<b>2.6%</b>	<b>TOTAL</b>	<b>8,865,325</b>

RTC Transit includes RTC RIDE, RTC INTERCITY, & RTC SIERRA SPIRIT

# RTC Transit

## FISCAL YEAR COMPARISONS



## RTC Transit

WEIGHTED AVERAGE DAILY RIDERSHIP							
Month	FY 2009	FY 2009 CHANGE FROM			FY 2008	FY 2007	FY 2006
		FY 2008	FY 2007	FY 2006			
JUL	25,839	2.4%	2.7%	7.2%	25,236	25,155	24,105
AUG	26,307	2.6%	1.4%	7.6%	25,641	25,944	24,450
SEP	26,856	5.8%	2.2%	6.6%	25,380	26,267	25,195
OCT	25,819	2.6%	3.2%	4.8%	25,159	25,020	24,635
NOV	23,165	-8.0%	-1.6%	-2.7%	25,181	23,548	23,798
DEC	22,323	-3.0%	-3.8%	-0.3%	23,020	23,203	22,396
JAN					23,419	22,721	23,419
FEB					25,402	23,589	24,199
MAR					25,517	24,124	23,875
APR					26,020	23,996	23,986
MAY					25,068	24,908	25,107
JUN					25,039	25,180	25,051

Weighted Avg. Daily Ridership = ( avg. weekday X 5) + avg. Saturday + avg. Sunday ) / 7  
 Holidays are excluded from the weighted average.

WEEKDAY, SATURDAY, AND SUNDAY RIDERSHIP ROLLING TWELVE MONTH COMPARISON									
Month	Weekday			Saturday			Sunday		
	Recent 12 Mos.	Percent Change	Previous 12 Mos.	Recent 12 Mos.	Percent Change	Previous 12 Mos.	Recent 12 Mos.	Percent Change	Previous 12 Mos.
JAN	26,262	2.6%	25,606	18,992	6.3%	17,861	13,635	3.6%	13,156
FEB	28,466	7.4%	26,504	20,627	7.6%	19,177	14,859	10.7%	13,425
MAR	28,794	6.5%	27,026	20,332	4.5%	19,465	14,317	0.3%	14,279
APR	28,988	7.0%	27,093	21,140	11.3%	18,996	16,065	18.9%	13,513
MAY	28,023	0.6%	27,863	20,806	2.9%	20,219	14,554	-1.8%	14,823
JUN	27,981	-1.0%	28,260	19,843	-0.6%	19,966	15,523	3.5%	14,992
JUL	28,837	1.6%	28,390	20,971	5.8%	19,819	15,717	5.6%	14,881
AUG	29,192	2.2%	28,571	22,110	2.2%	21,631	16,078	7.2%	14,998
SEP	29,979	5.8%	28,338	22,541	9.4%	20,602	15,556	1.2%	15,369
OCT	28,961	3.0%	28,119	20,854	0.4%	20,777	15,074	2.2%	14,744
NOV	26,021	-7.7%	28,194	18,652	-9.3%	20,571	13,396	-9.0%	14,728
DEC	25,143	-2.4%	25,752	17,743	-4.6%	18,592	12,805	-7.1%	13,785

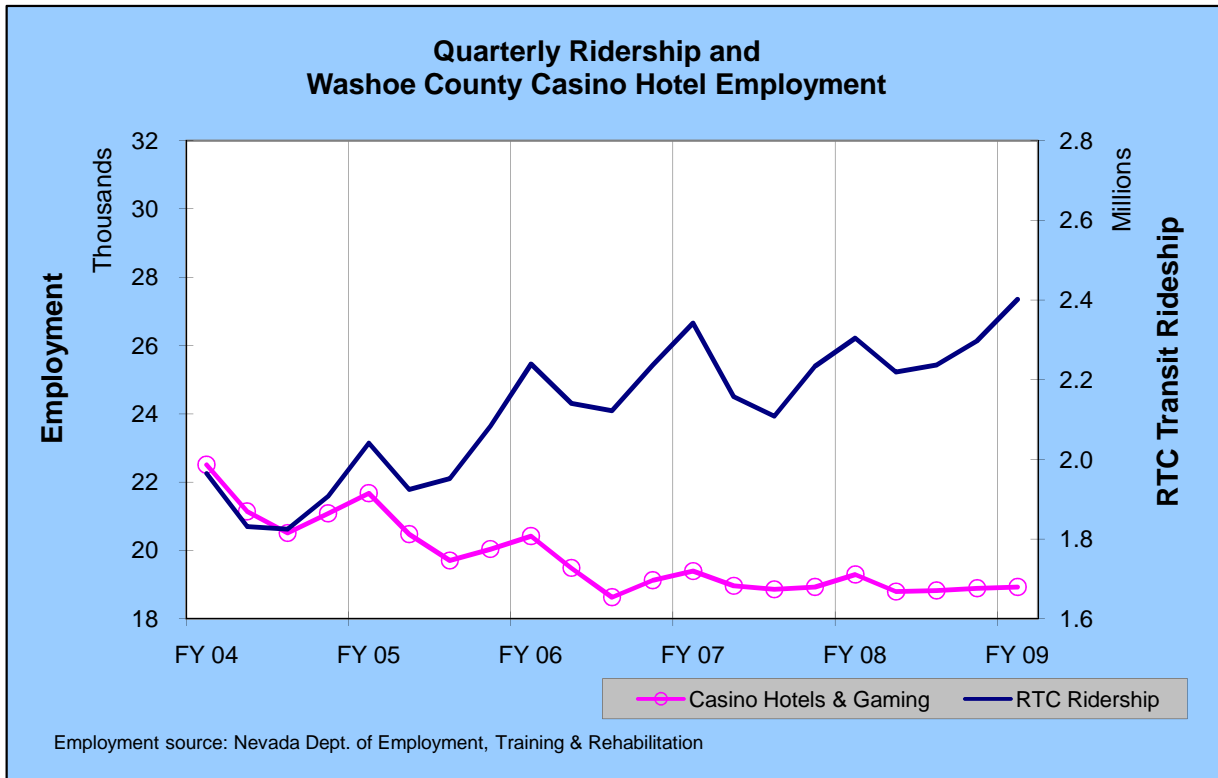
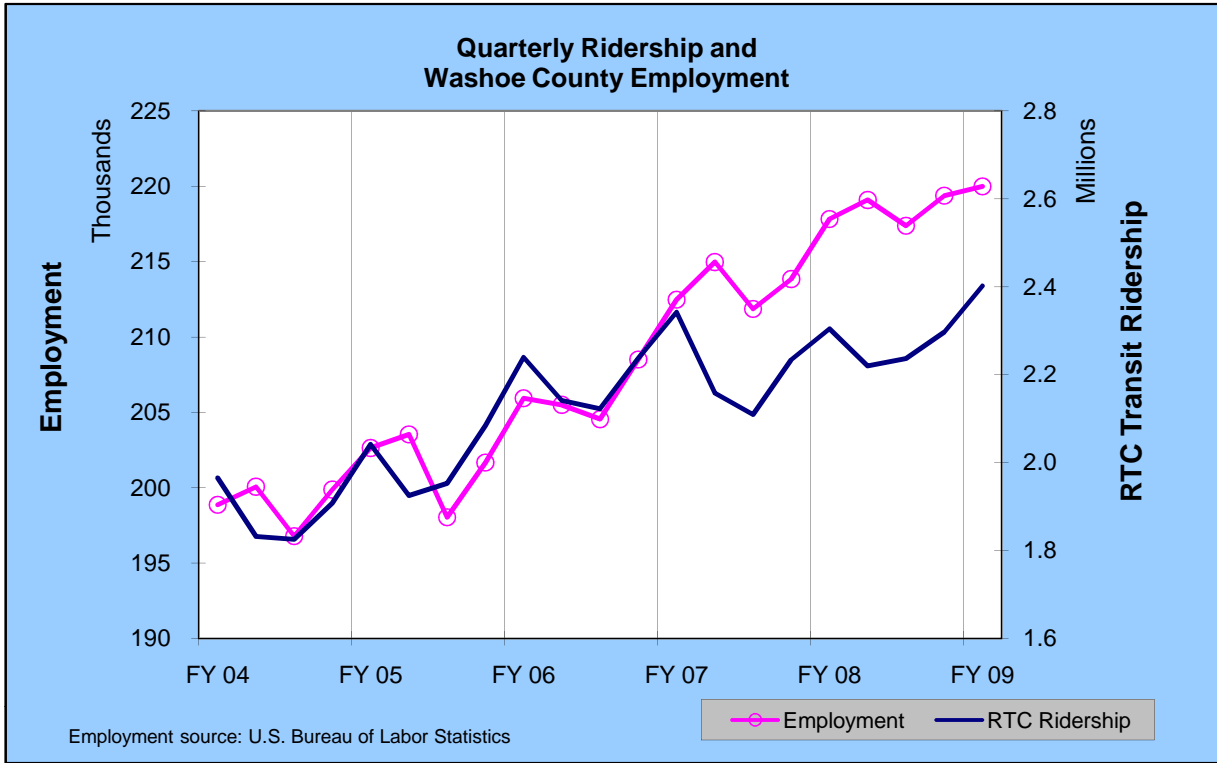
# RTC ROUTE COMPARISON REPORT

## Dec 2008

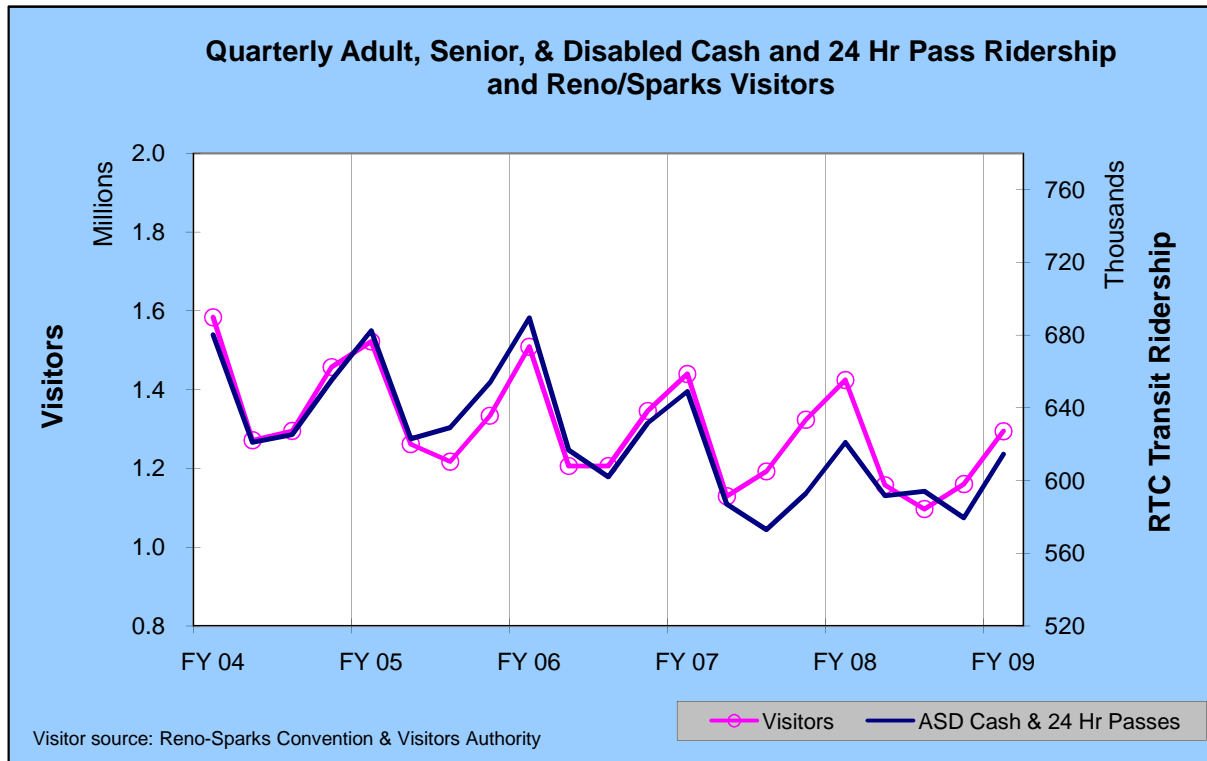
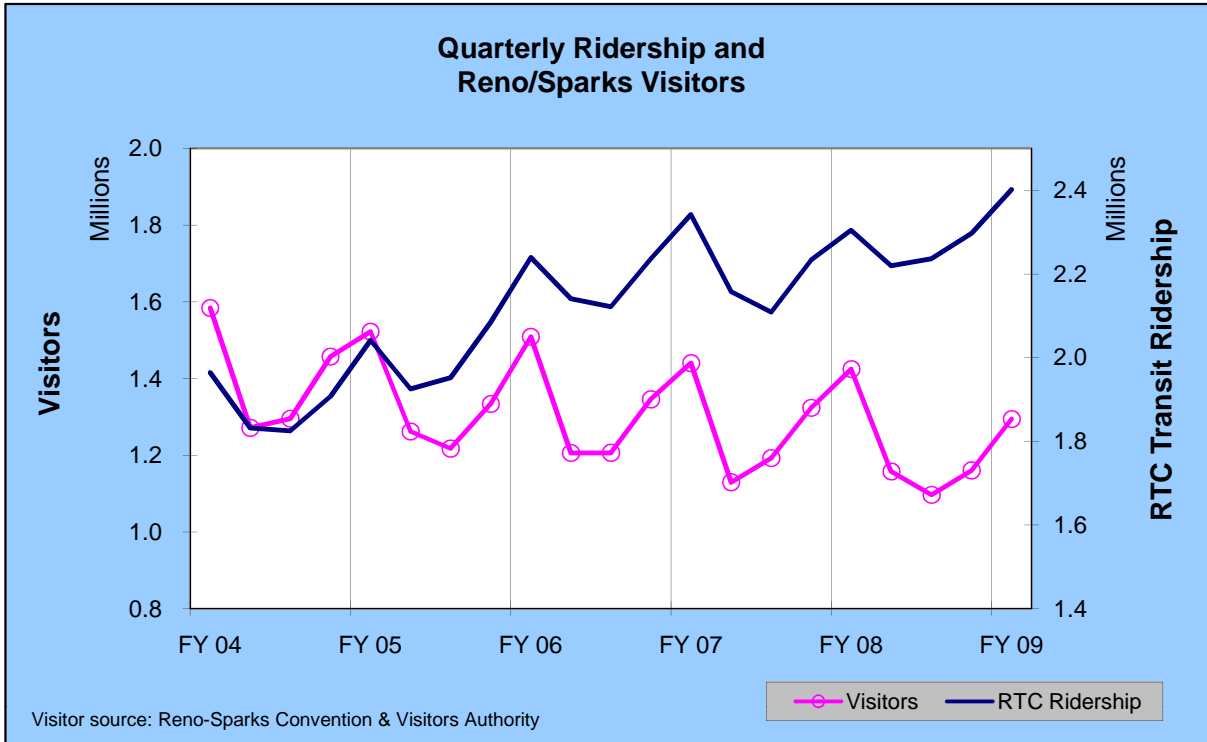
Productivity		Ridership		Ridership Change From Last Year	
Route *		Route		Route	
1	46.1	1	140,230	28	N/A
15	40.8	2	70,332	11	61.9%
5	39.5	11	58,189	19	51.6%
11	38.9	9	49,784	7	32.5%
2	33.5	RTC SS	38,702	21	17.1%
RTC SS	33.3	5	37,535	RTC IC	16.8%
3	33.0	7	35,746	3	16.7%
4	30.7	15	34,539	15	15.8%
TOTAL	30.5	14	33,868	25	12.7%
14	28.7	6	29,370	14	10.6%
19	28.2	3	26,784	6	9.8%
6	27.2	13	17,937	5	8.2%
57	25.1	18	17,430	RTC SS	6.9%
18	24.8	4	16,763	18	2.2%
9	24.5	21	13,758	57	2.0%
7	23.5	16	9,315	54	0.1%
21	22.7	17	9,010	TOTAL	-0.3%
13	22.2	56	8,821	2	-1.6%
56	22.2	57	7,863	4	-4.2%
25	20.5	26	6,687	9	-5.6%
16	19.8	54	6,233	13	-6.4%
26	17.5	19	4,781	1	-7.7%
54	15.0	RTC IC	4,405	26	-7.9%
17	13.3	25	4,389	16	-8.7%
28	12.4	28	1,096	56	-23.2%
RTC IC	10.8	TOTAL	683,567	17	-32.2%

\* - Route 395 is RTC INTERCITY. Route 777 is RTC SIERRA SPIRIT

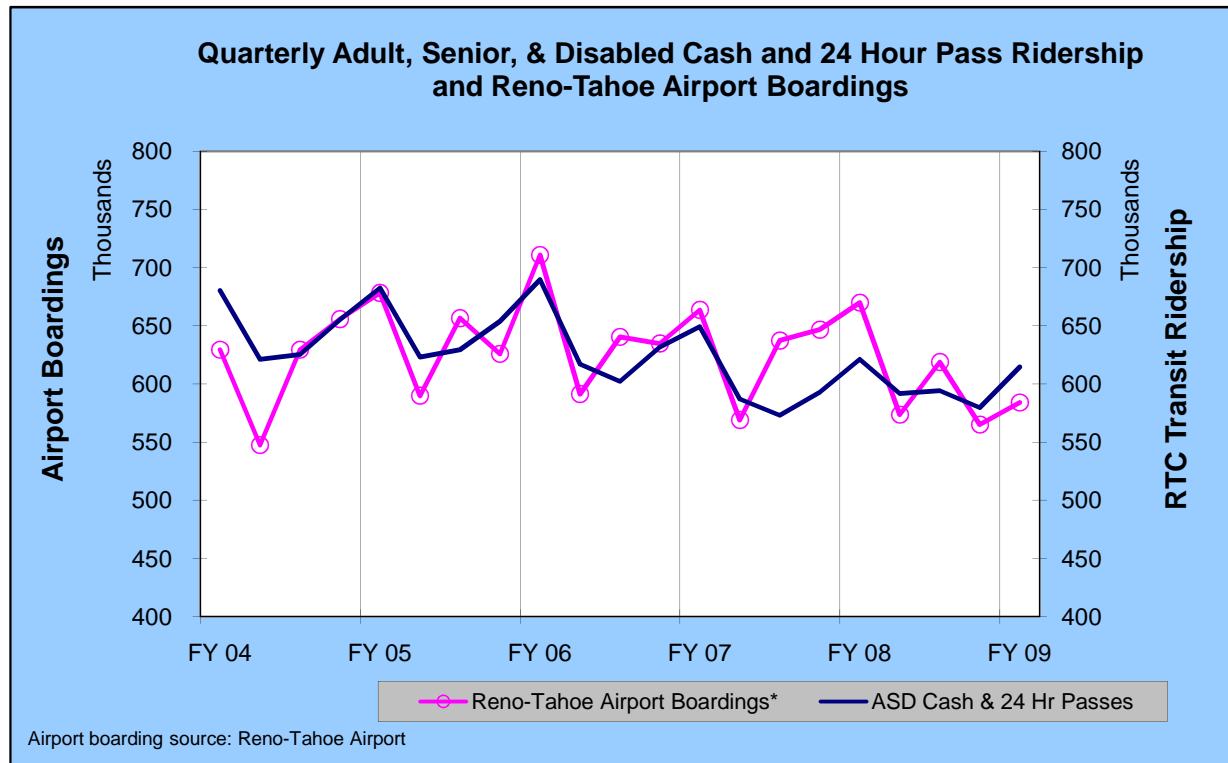
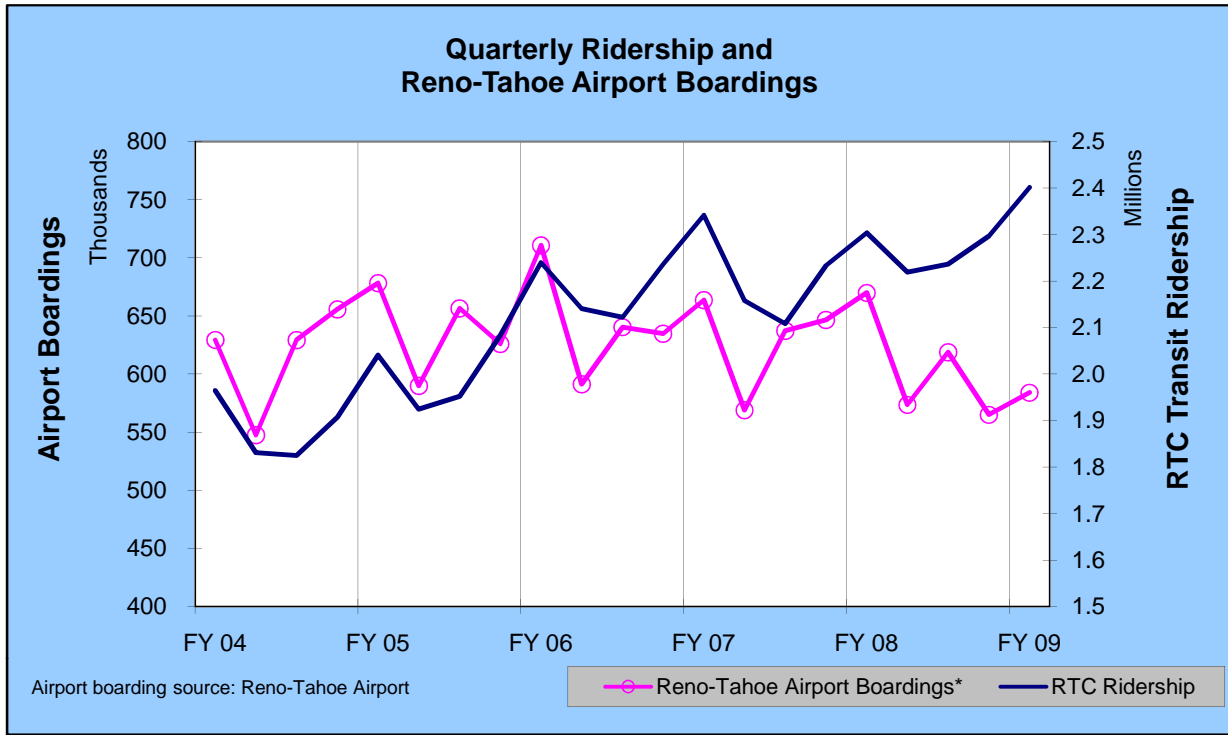
# RTC Transit



# RTC Transit



# RTC Transit



**DECEMBER 2008**

	ROUTE					
	1	2	3	4	5	6
<b>Total Ridership</b>	<b>140,230</b>	<b>70,332</b>	<b>26,784</b>	<b>16,763</b>	<b>37,535</b>	<b>29,370</b>
Previous Year (DEC 07)	151,895	71,448	22,959	17,493	34,690	26,742
Change	-7.7%	-1.6%	16.7%	-4.2%	8.2%	9.8%
Average Daily Ridership	4,524	2,269	864	541	1,211	947
Days Route Operated	31	31	31	31	31	31
<b>Revenue Veh. Hours</b>	<b>3,042.7</b>	<b>2,100.8</b>	<b>811.7</b>	<b>546.0</b>	<b>951.3</b>	<b>1,078.4</b>
Previous Year (DEC 07)	3,060.7	2,201.4	807.4	540.0	1,050.5	1,055.8
Change	-0.6%	-4.6%	0.5%	1.1%	-9.4%	2.1%
<b>Passengers / RVH</b>	<b>46.1</b>	<b>33.5</b>	<b>33.0</b>	<b>30.7</b>	<b>39.5</b>	<b>27.2</b>
Previous Year (DEC 07)	49.6	32.5	28.4	32.4	33.0	25.3
Change	-7.1%	3.1%	16.0%	-5.2%	19.5%	7.5%
Revenue Vehicle Miles	26,922.2	22,122.6	11,310.7	7,346.5	13,246.7	11,795.8
<b>Passengers / RVM</b>	<b>5.21</b>	<b>3.18</b>	<b>2.37</b>	<b>2.28</b>	<b>2.83</b>	<b>2.49</b>
Previous Year (DEC 07)	5.83	3.09	2.13	2.54	2.22	2.26
Change	-10.7%	2.8%	11.0%	-10.1%	27.9%	10.2%
One-Way Trips	5,421	3,297	1,644	1,093	1,924	1,583
Deadhead Miles	1,394.4	1,167.6	541.9	381.3	536.7	455.1
Deadhead Hours	54.28	45.88	21.42	12.40	24.28	15.46
Est. Gross Operating Cost	\$332,896	\$229,846	\$88,806	\$59,734	\$104,077	\$117,979
Est. Cost Per RVH	\$109.41	\$109.41	\$109.41	\$109.41	\$109.41	\$109.41
Est. Cost Per RVM	\$12.37	\$10.39	\$7.85	\$8.13	\$7.86	\$10.00
Est. Cost Per Passenger	\$2.37	\$3.27	\$3.32	\$3.56	\$2.77	\$4.02

**DECEMBER 2008**

	ROUTE				
	7	9	10	11	11X
<b>Total Ridership</b>	<b>35,746</b>	<b>49,784</b>		<b>58,189</b>	
Previous Year (DEC 07)	26,977	52,752	7,806	35,947	16,286
Change	32.5%	-5.6%		61.9%	
Average Daily Ridership	1,153	1,606		1,877	
Days Route Operated	31	31		31	
<b>Revenue Veh. Hours</b>	<b>1,518.2</b>	<b>2,035.6</b>		<b>1,495.7</b>	
Previous Year (DEC 07)	1,097.0	2,250.0	423.1	1,256.9	457.6
Change	38.4%	-9.5%		19.0%	
<b>Passengers / RVH</b>	<b>23.5</b>	<b>24.5</b>		<b>38.9</b>	
Previous Year (DEC 07)	24.6	23.4	18.4	28.6	35.6
Change	-4.3%	4.3%		36.0%	
Revenue Vehicle Miles	30,319.8	19,429.9		12,078.9	
<b>Passengers / RVM</b>	<b>1.18</b>	<b>2.56</b>		<b>4.82</b>	
Previous Year (DEC 07)	1.09	2.42	1.67	2.68	2.36
Change	8.1%	5.8%		79.7%	
One-Way Trips	2,043	2,971		3,814	
Deadhead Miles	852.2	1,074.1		701.3	
Deadhead Hours	32.01	42.32		28.80	
Est. Gross Operating Cost	\$166,096	\$222,709		\$163,638	
Est. Cost Per RVH	\$109.41	\$109.41		\$109.41	
Est. Cost Per RVM	\$5.48	\$11.46		\$13.55	
Est. Cost Per Passenger	\$4.65	\$4.47		\$2.81	

**DECEMBER 2008**

	<b>ROUTE</b>				
	<b>13</b>	<b>14</b>	<b>15</b>	<b>16</b>	<b>17</b>
<b>Total Ridership</b>	<b>17,937</b>	<b>33,868</b>	<b>34,539</b>	<b>9,315</b>	<b>9,010</b>
Previous Year (DEC 07)	19,158	30,612	29,823	10,199	13,294
Change	-6.4%	10.6%	15.8%	-8.7%	-32.2%
Average Daily Ridership	579	1,093	1,114	300	291
Days Route Operated	31	31	31	31	31
<b>Revenue Veh. Hours</b>	<b>806.6</b>	<b>1,181.8</b>	<b>847.4</b>	<b>471.5</b>	<b>678.7</b>
Previous Year (DEC 07)	858.5	1,457.5	903.6	432.0	770.6
Change	-6.0%	-18.9%	-6.2%	9.1%	-11.9%
<b>Passengers / RVH</b>	<b>22.2</b>	<b>28.7</b>	<b>40.8</b>	<b>19.8</b>	<b>13.3</b>
Previous Year (DEC 07)	22.3	21.0	33.0	23.6	17.3
Change	-0.3%	36.4%	23.5%	-16.3%	-23.1%
Revenue Vehicle Miles	6,926.5	11,698.9	10,422.4	5,014.7	14,776.9
<b>Passengers / RVM</b>	<b>2.59</b>	<b>2.89</b>	<b>3.31</b>	<b>1.86</b>	<b>0.61</b>
Previous Year (DEC 07)	2.59	2.30	2.78	2.07	0.78
Change	0.0%	25.9%	19.2%	-10.1%	-22.0%
One-Way Trips	1,621	2,407	1,704	1,572	1,031
Deadhead Miles	230.4	1,094.6	385.4	313.8	460.1
Deadhead Hours	7.77	51.25	15.62	12.47	18.19
Est. Gross Operating Cost	\$88,246	\$129,297	\$92,706	\$51,587	\$74,254
Est. Cost Per RVH	\$109.41	\$109.41	\$109.41	\$109.41	\$109.41
Est. Cost Per RVM	\$12.74	\$11.05	\$8.89	\$10.29	\$5.03
Est. Cost Per Passenger	\$4.92	\$3.82	\$2.68	\$5.54	\$8.24

**DECEMBER 2008**

	ROUTE					
	18	18X	19	21	22	25
<b>Total Ridership</b>	<b>17,430</b>		<b>4,781</b>	<b>13,758</b>		<b>4,389</b>
Previous Year (DEC 07)	17,050	1,667	3,153	11,746	1,277	3,893
Change	2.2%		51.6%	17.1%		12.7%
Average Daily Ridership	562		184	444		169
Days Route Operated	31		26	31		26
<b>Revenue Veh. Hours</b>	<b>701.5</b>		<b>169.3</b>	<b>606.4</b>		<b>214.1</b>
Previous Year (DEC 07)	708.4	92.0	210.5	522.9	114.0	182.2
Change	-1.0%		-19.6%	16.0%		17.5%
<b>Passengers / RVH</b>	<b>24.8</b>		<b>28.2</b>	<b>22.7</b>		<b>20.5</b>
Previous Year (DEC 07)	24.1	18.1	15.0	22.5	11.2	21.4
Change	3.2%		88.6%	1.0%		-4.1%
Revenue Vehicle Miles	8,029.5		1,279.8	7,117.6		2,808.8
<b>Passengers / RVM</b>	<b>2.17</b>		<b>3.74</b>	<b>1.93</b>		<b>1.56</b>
Previous Year (DEC 07)	2.12	1.14	2.11	3.24	0.77	1.60
Change	2.2%		76.9%	-40.3%		-2.2%
One-Way Trips	1,430		632	1,878		676
Deadhead Miles	562.5		104.4	300.5		106.4
Deadhead Hours	26.25		4.22	12.33		4.38
Est. Gross Operating Cost	\$76,753		\$18,519	\$66,344		\$23,420
Est. Cost Per RVH	\$109.41		\$109.41	\$109.41		\$109.41
Est. Cost Per RVM	\$9.56		\$14.47	\$9.32		\$8.34
Est. Cost Per Passenger	\$4.40		\$3.87	\$4.82		\$5.34

**DECEMBER 2008**

	ROUTE					
	26	37	54	55	56	57
<b>Total Ridership</b>	<b>6,687</b>		<b>6,233</b>		<b>8,821</b>	<b>7,863</b>
Previous Year (DEC 07)	7,263	3,909	6,228	2,441	11,480	7,707
Change	-7.9%		0.1%		-23.2%	2.0%
Average Daily Ridership	216		201		285	254
Days Route Operated	31		31		31	31
<b>Revenue Veh. Hours</b>	<b>383.0</b>		<b>416.6</b>		<b>397.0</b>	<b>312.7</b>
Previous Year (DEC 07)	303.1	309.7	246.3	238.1	411.9	357.7
Change	26.3%		69.1%		-3.6%	-12.6%
<b>Passengers / RVH</b>	<b>17.5</b>		<b>15.0</b>		<b>22.2</b>	<b>25.1</b>
Previous Year (DEC 07)	24.0	12.6	25.3	10.3	27.9	21.5
Change	-27.1%		-40.8%		-20.3%	16.7%
Revenue Vehicle Miles	4,098.3		6,588.3		5,985.6	6,352.0
<b>Passengers / RVM</b>	<b>1.63</b>		<b>0.95</b>		<b>1.47</b>	<b>1.24</b>
Previous Year (DEC 07)	1.03	0.44	1.37	1.13	1.82	0.94
Change	58.2%		-31.1%		-19.0%	31.8%
One-Way Trips	1,140		822		1,208	972
Deadhead Miles	189.5		475.1		410.3	134.5
Deadhead Hours	7.76		18.16		14.90	4.73
Est. Gross Operating Cost	\$41,899		\$45,573		\$43,438	\$34,208
Est. Cost Per RVH	\$109.41		\$109.41		\$109.41	\$109.41
Est. Cost Per RVM	\$10.22		\$6.92		\$7.26	\$5.39
Est. Cost Per Passenger	\$6.27		\$7.31		\$4.92	\$4.35

**DECEMBER 2008**

	ROUTE			MISC SERVICE
	28	RTC IC	RTC SS	
<b>Total Ridership</b>	<b>1,096</b>	<b>4,405</b>	<b>38,702</b>	<b>0</b>
Previous Year (DEC 07)	0	3,772	36,196	
Change	N/A	16.8%	6.9%	
Average Daily Ridership	50	200	1,248	
Days Route Operated	22	22	31	
<b>Revenue Veh. Hours</b>	<b>88.4</b>	<b>409.2</b>	<b>1,161.0</b>	
Previous Year (DEC 07)		480.7	1,329.0	
Change		-14.9%	-12.6%	
<b>Passengers / RVH</b>	<b>12.4</b>	<b>10.8</b>	<b>33.3</b>	
Previous Year (DEC 07)		7.8	27.2	
Change		37.2%	22.4%	
Revenue Vehicle Miles	1,672.0	12,965.5	10,965.0	
<b>Passengers / RVM</b>	<b>0.66</b>	<b>0.34</b>	<b>3.53</b>	
Previous Year (DEC 07)		0.28	2.94	
Change		23.5%	20.3%	
One-Way Trips	220	396	2,353	
Deadhead Miles	113.6	610.7	697.5	
Deadhead Hours	4.34	28.23	32.55	
Est. Gross Operating Cost	\$9,668	\$44,769	\$127,021	
Est. Cost Per RVH	\$109.41	\$109.41	\$109.41	
Est. Cost Per RVM	\$5.78	\$3.45	\$11.58	
Est. Cost Per Passenger	\$8.82	\$10.16	\$3.28	

**DECEMBER 2008**

	SYSTEM TOTALS		PERCENT CHANGE
	DEC 08	DEC 07	
<b>Cash Fares</b>			
Adult	95,395	108,734	-12.3%
Youth	25,214	28,442	-11.3%
Senior & Disabled	28,201	25,122	12.3%
<b>Total Cash Fares</b>	<b>148,810</b>	<b>162,298</b>	<b>-8.3%</b>
<b>Period Pass Fares</b>			
Adult	157,100	150,745	4.2%
Youth	21,669	14,282	51.7%
Senior & Disabled	131,700	121,881	8.1%
<b>Total Period Pass Fares</b>	<b>310,469</b>	<b>286,908</b>	<b>8.2%</b>
Transfers	110,964	127,573	-13.0%
Flow Through	9,498	11,161	-14.9%
Free Rides	62,566	60,427	3.5%
RTC ACCESS ID Cash	2,702	3,526	-23.4%
Stored Ride Pass	38,558	33,970	13.5%
Adult Ridership	353,568	374,154	-5.5%
Youth Ridership	73,187	72,095	1.5%
Sen & Dis Ridership	194,246	179,187	8.4%
<b>Total Ridership</b>	<b>683,567</b>	<b>685,863</b>	<b>-0.3%</b>
Previous Year (DEC 07)	685,863		
Change	-0.3%		
Average Daily Ridership	22,051	22,125	-0.3%
Days Route Operated	31	31	0.0%
<b>Revenue Veh. Hours</b>	<b>22,425.3</b>	<b>24,129.1</b>	<b>-7.1%</b>
Previous Year (DEC 07)	24,129.1		
Change	-7.1%		
<b>Passengers / RVH</b>	<b>30.5</b>	<b>28.4</b>	<b>7.2%</b>
Previous Year (DEC 07)	28.4		
Change	7.2%		
Revenue Vehicle Miles	271,275.0	301,067.3	-9.9%
<b>Passengers / RVM</b>	<b>2.52</b>	<b>2.28</b>	<b>10.6%</b>
Previous Year (DEC 07)	2.28		
Change	10.6%		
One-Way Trips	43,852	51,486	-14.8%
Deadhead Miles	13,293.8	14,466.9	-8.1%
Deadhead Hours	540.00	577.15	-6.4%
Est. Gross Operating Cost	\$2,453,485	\$2,368,298	3.6%
Est. Cost Per RVH	\$109.41	\$98.15	11.5%
Est. Cost Per RVM	\$9.04	\$7.87	15.0%
Est. Cost Per Passenger	\$3.59	\$3.45	3.9%

**JUL 08 - DEC 08**

	ROUTE					
	1	2	3	4	5	6
<b>Total Ridership</b>	<b>916,595</b>	<b>463,035</b>	<b>165,587</b>	<b>108,642</b>	<b>278,767</b>	<b>173,795</b>
Previous Year (FYTD 07)	947,924	461,704	138,116	103,614	247,302	163,838
Change	-3.3%	0.3%	19.9%	4.9%	12.7%	6.1%
Average Daily Ridership	4,981	2,516	900	590	1,515	945
Days Route Operated	184	184	184	184	184	184
<b>Revenue Veh. Hours</b>	<b>18,280.0</b>	<b>12,846.2</b>	<b>4,822.3</b>	<b>3,232.9</b>	<b>6,013.9</b>	<b>6,417.8</b>
Previous Year (FYTD 07)	18,396.5	13,243.9	4,837.0	3,231.8	6,323.9	6,461.2
Change	-0.6%	-3.0%	-0.3%	0.0%	-4.9%	-0.7%
<b>Passengers / RVH</b>	<b>50.1</b>	<b>36.0</b>	<b>34.3</b>	<b>33.6</b>	<b>46.4</b>	<b>27.1</b>
Previous Year (FYTD 07)	51.5	34.9	28.6	32.1	39.1	25.4
Change	-2.7%	3.4%	20.3%	4.8%	18.5%	6.8%
Revenue Vehicle Miles	161,800.7	136,056.7	66,467.9	43,501.0	86,635.6	70,685.1
<b>Passengers / RVM</b>	<b>5.66</b>	<b>3.40</b>	<b>2.49</b>	<b>2.50</b>	<b>3.22</b>	<b>2.46</b>
Previous Year (FYTD 07)	6.00	3.32	2.12	2.47	2.64	2.27
Change	-5.7%	2.4%	17.5%	1.2%	22.0%	8.4%
One-Way Trips	32,586	20,513	9,654	6,472	11,942	9,486
Deadhead Miles	8,052.9	7,216.5	3,772.7	2,263.2	2,829.8	2,583.1
Deadhead Hours	319.20	272.62	131.76	73.60	119.05	89.18
Est. Gross Operating Cost	\$1,999,955	\$1,405,460	\$527,591	\$353,705	\$657,966	\$702,154
Est. Cost Per RVH	\$109.41	\$109.41	\$109.41	\$109.41	\$109.41	\$109.41
Est. Cost Per RVM	\$12.36	\$10.33	\$7.94	\$8.13	\$7.59	\$9.93
Est. Cost Per Passenger	\$2.18	\$3.04	\$3.19	\$3.26	\$2.36	\$4.04

**JUL 08 - DEC 08**

	<b>ROUTE</b>				
	<b>7</b>	<b>9</b>	<b>10</b>	<b>11</b>	<b>11X</b>
<b>Total Ridership</b>	<b>229,890</b>	<b>326,981</b>	<b>27,144</b>	<b>293,798</b>	<b>74,981</b>
Previous Year (FYTD 07)	196,818	351,296	44,926	292,976	107,096
Change	16.8%	-6.9%	-39.6%	0.3%	-30.0%
Average Daily Ridership	1,249	1,777	232	1,597	641
Days Route Operated	184	184	117	184	117
<b>Revenue Veh. Hours</b>	<b>7,449.5</b>	<b>12,749.6</b>	<b>1,498.8</b>	<b>7,970.9</b>	<b>1,717.6</b>
Previous Year (FYTD 07)	6,605.5	13,528.1	2,524.4	7,555.8	2,668.3
Change	12.8%	-5.8%	-40.6%	5.5%	-35.6%
<b>Passengers / RVH</b>	<b>30.9</b>	<b>25.6</b>	<b>18.1</b>	<b>36.9</b>	<b>43.7</b>
Previous Year (FYTD 07)	29.8	26.0	17.8	38.8	40.1
Change	3.6%	-1.2%	1.8%	-4.9%	8.8%
Revenue Vehicle Miles	159,697.1	122,999.2	19,640.5	76,657.4	25,946.2
<b>Passengers / RVM</b>	<b>1.44</b>	<b>2.66</b>	<b>1.38</b>	<b>3.83</b>	<b>2.89</b>
Previous Year (FYTD 07)	1.32	2.69	1.61	3.66	2.60
Change	9.1%	-1.0%	-14.2%	4.6%	11.2%
One-Way Trips	12,075	18,808	3,287	22,268	6,375
Deadhead Miles	5,018.2	5,946.1	928.7	4,443.8	993.8
Deadhead Hours	173.47	224.73	38.90	182.22	35.98
Est. Gross Operating Cost	\$815,022	\$1,394,897	\$163,977	\$872,070	\$187,914
Est. Cost Per RVH	\$109.41	\$109.41	\$109.41	\$109.41	\$109.41
Est. Cost Per RVM	\$5.10	\$11.34	\$8.35	\$11.38	\$7.24
Est. Cost Per Passenger	\$3.55	\$4.27	\$6.04	\$2.97	\$2.51

**JUL 08 - DEC 08**

	<b>ROUTE</b>				
	<b>13</b>	<b>14</b>	<b>15</b>	<b>16</b>	<b>17</b>
<b>Total Ridership</b>	<b>116,788</b>	<b>233,066</b>	<b>231,679</b>	<b>58,600</b>	<b>77,101</b>
Previous Year (FYTD 07)	126,512	221,771	198,855	63,140	84,789
Change	-7.7%	5.1%	16.5%	-7.2%	-9.1%
Average Daily Ridership	635	1,267	1,259	318	419
Days Route Operated	184	184	184	184	184
<b>Revenue Veh. Hours</b>	<b>4,936.1</b>	<b>7,936.0</b>	<b>5,258.3</b>	<b>2,653.3</b>	<b>4,359.0</b>
Previous Year (FYTD 07)	5,179.5	8,825.8	5,433.9	2,638.2	4,594.6
Change	-4.7%	-10.1%	-3.2%	0.6%	-5.1%
<b>Passengers / RVH</b>	<b>23.7</b>	<b>29.4</b>	<b>44.1</b>	<b>22.1</b>	<b>17.7</b>
Previous Year (FYTD 07)	24.4	25.1	36.6	23.9	18.5
Change	-3.1%	16.9%	20.4%	-7.7%	-4.2%
Revenue Vehicle Miles	43,450.0	78,643.4	63,619.6	30,024.3	96,290.2
<b>Passengers / RVM</b>	<b>2.69</b>	<b>2.96</b>	<b>3.64</b>	<b>1.95</b>	<b>0.80</b>
Previous Year (FYTD 07)	2.87	2.73	3.10	2.09	0.84
Change	-6.5%	8.5%	17.3%	-6.6%	-4.2%
One-Way Trips	10,168	16,504	10,403	9,412	6,408
Deadhead Miles	1,256.6	5,783.1	2,243.6	2,448.7	2,315.5
Deadhead Hours	59.10	282.42	91.59	88.57	84.75
Est. Gross Operating Cost	\$540,038	\$868,255	\$575,291	\$290,293	\$476,901
Est. Cost Per RVH	\$109.41	\$109.41	\$109.41	\$109.41	\$109.41
Est. Cost Per RVM	\$12.43	\$11.04	\$9.04	\$9.67	\$4.95
Est. Cost Per Passenger	\$4.62	\$3.73	\$2.48	\$4.95	\$6.19

**JUL 08 - DEC 08**

	<b>ROUTE</b>					
	<b>18</b>	<b>18X</b>	<b>19</b>	<b>21</b>	<b>22</b>	<b>25</b>
<b>Total Ridership</b>	<b>111,206</b>	<b>7,136</b>	<b>23,489</b>	<b>74,110</b>	<b>7,020</b>	<b>30,910</b>
Previous Year (FYTD 07)	120,903	11,200	20,550	81,041	9,300	31,085
Change	-8.0%	-36.3%	14.3%	-8.6%	-24.5%	-0.6%
Average Daily Ridership	604	87	144	403	86	201
Days Route Operated	184	82	163	184	82	154
<b>Revenue Veh. Hours</b>	<b>4,192.3</b>	<b>377.2</b>	<b>1,107.3</b>	<b>3,275.4</b>	<b>467.4</b>	<b>1,137.3</b>
Previous Year (FYTD 07)	4,328.8	584.2	1,253.2	3,115.8	723.9	1,153.8
Change	-3.2%	-35.4%	-11.6%	5.1%	-35.4%	-1.4%
<b>Passengers / RVH</b>	<b>26.5</b>	<b>18.9</b>	<b>21.2</b>	<b>22.6</b>	<b>15.0</b>	<b>27.2</b>
Previous Year (FYTD 07)	27.9	19.2	16.4	26.0	12.8	26.9
Change	-5.0%	-1.3%	29.4%	-13.0%	16.9%	0.9%
Revenue Vehicle Miles	49,120.0	6,232.0	9,128.7	34,358.2	6,779.8	14,840.2
<b>Passengers / RVM</b>	<b>2.26</b>	<b>1.15</b>	<b>2.57</b>	<b>2.16</b>	<b>1.04</b>	<b>2.08</b>
Previous Year (FYTD 07)	2.43	1.19	2.31	3.37	0.88	2.10
Change	-6.8%	-4.1%	11.3%	-36.0%	17.6%	-0.7%
One-Way Trips	8,748	820	4,508	13,510	984	4,168
Deadhead Miles	3,129.4	1,230.0	972.0	2,218.3	2,227.1	646.3
Deadhead Hours	145.80	57.40	36.13	87.23	62.87	24.35
Est. Gross Operating Cost	\$458,667	\$41,268	\$121,141	\$358,355	\$51,137	\$124,432
Est. Cost Per RVH	\$109.41	\$109.41	\$109.41	\$109.41	\$109.41	\$109.41
Est. Cost Per RVM	\$9.34	\$6.62	\$13.27	\$10.43	\$7.54	\$8.38
Est. Cost Per Passenger	\$4.12	\$5.78	\$5.16	\$4.84	\$7.28	\$4.03

**JUL 08 - DEC 08**

	<b>ROUTE</b>					
	<b>26</b>	<b>37</b>	<b>54</b>	<b>55</b>	<b>56</b>	<b>57</b>
<b>Total Ridership</b>	<b>49,343</b>	<b>22,705</b>	<b>36,428</b>	<b>8,710</b>	<b>68,201</b>	<b>51,517</b>
Previous Year (FYTD 07)	50,378	28,064	39,373	14,969	69,290	49,638
Change	-2.1%	-19.1%	-7.5%	-41.8%	-1.6%	3.8%
Average Daily Ridership	268	194	198	74	371	280
Days Route Operated	184	117	184	117	184	184
<b>Revenue Veh. Hours</b>	<b>2,050.0</b>	<b>1,160.7</b>	<b>1,789.3</b>	<b>828.4</b>	<b>2,406.5</b>	<b>2,020.0</b>
Previous Year (FYTD 07)	1,835.4	1,885.5	1,474.2	1,424.5	2,503.8	2,140.3
Change	11.7%	-38.4%	21.4%	-41.8%	-3.9%	-5.6%
<b>Passengers / RVH</b>	<b>24.1</b>	<b>19.6</b>	<b>20.4</b>	<b>10.5</b>	<b>28.3</b>	<b>25.5</b>
Previous Year (FYTD 07)	27.4	14.9	26.7	10.5	27.7	23.2
Change	-12.3%	31.4%	-23.8%	0.1%	2.4%	10.0%
Revenue Vehicle Miles	25,311.4	33,440.7	30,698.6	7,473.0	36,488.6	42,451.4
<b>Passengers / RVM</b>	<b>1.95</b>	<b>0.68</b>	<b>1.19</b>	<b>1.17</b>	<b>1.87</b>	<b>1.21</b>
Previous Year (FYTD 07)	1.35	0.53	1.45	1.16	1.81	1.01
Change	44.4%	27.7%	-18.2%	0.9%	3.2%	19.9%
One-Way Trips	7,028	3,094	5,266	3,428	7,364	6,496
Deadhead Miles	947.1	1,289.3	1,398.1	378.2	2,106.1	1,458.1
Deadhead Hours	36.35	42.33	54.19	15.25	74.80	51.85
Est. Gross Operating Cost	\$224,284	\$126,987	\$195,756	\$90,636	\$263,291	\$221,006
Est. Cost Per RVH	\$109.41	\$109.41	\$109.41	\$109.41	\$109.41	\$109.41
Est. Cost Per RVM	\$8.86	\$3.80	\$6.38	\$12.13	\$7.22	\$5.21
Est. Cost Per Passenger	\$4.55	\$5.59	\$5.37	\$10.41	\$3.86	\$4.29

**JUL 08 - DEC 08**

	<b>28</b>	<b>ROUTE</b>	<b>RTC IC</b>	<b>RTC SS</b>	<b>MISC SERVICE</b>
<b>Total Ridership</b>	<b>2,751</b>		<b>28,880</b>	<b>254,957</b>	<b>5,583</b>
Previous Year (FYTD 07)			21,486	220,585	4,803
Change	N/A		34.4%	15.6%	16.2%
Average Daily Ridership	60		226	1,386	798
Days Route Operated	46		128	184	7
<b>Revenue Veh. Hours</b>	<b>184.8</b>		<b>2,380.8</b>	<b>7,398.0</b>	<b>84.0</b>
Previous Year (FYTD 07)			3,076.3	7,782.0	84.0
Change	N/A		-22.6%	-4.9%	0.0%
<b>Passengers / RVH</b>	<b>14.9</b>		<b>12.1</b>	<b>34.5</b>	<b>66.5</b>
Previous Year (FYTD 07)			7.0	28.3	57.2
Change	N/A		73.7%	21.6%	16.2%
Revenue Vehicle Miles	3,496.0		75,435.5	69,163.3	3,356.6
<b>Passengers / RVM</b>	<b>0.79</b>		<b>0.38</b>	<b>3.69</b>	<b>1.66</b>
Previous Year (FYTD 07)			0.24	3.07	2.86
Change	N/A		56.3%	20.1%	-41.9%
One-Way Trips	460		2,304	14,863	672
Deadhead Miles	237.6		3,553.3	4,140.0	250.9
Deadhead Hours	9.08		164.27	193.20	7.00
Est. Gross Operating Cost	\$20,215		\$260,476	\$809,393	\$9,190
Est. Cost Per RVH	\$109.41		\$109.41	\$109.41	\$109.41
Est. Cost Per RVM	\$5.78		\$3.45	\$11.70	\$2.74
Est. Cost Per Passenger	\$7.35		\$9.02	\$3.17	\$1.65

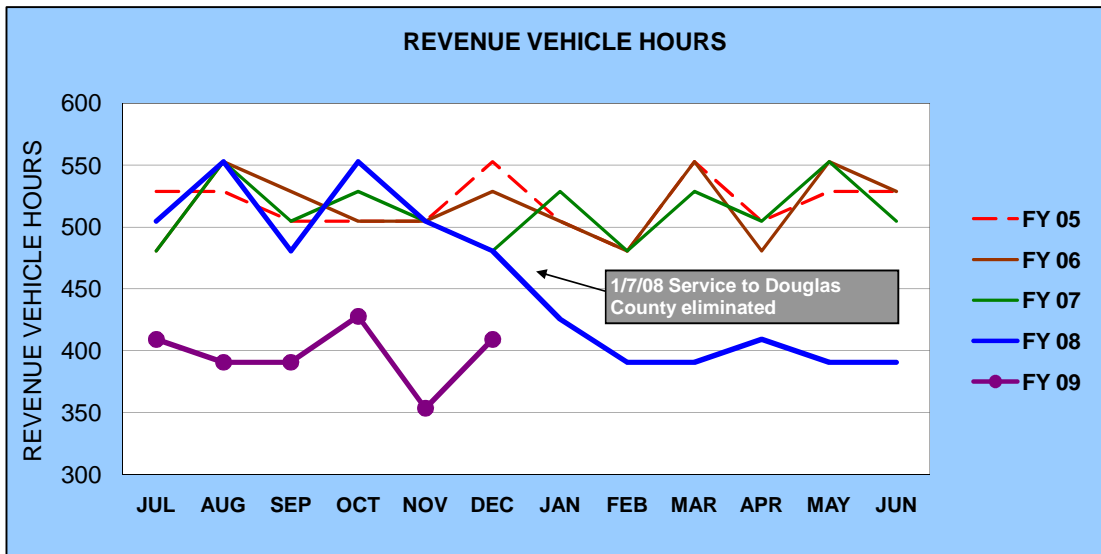
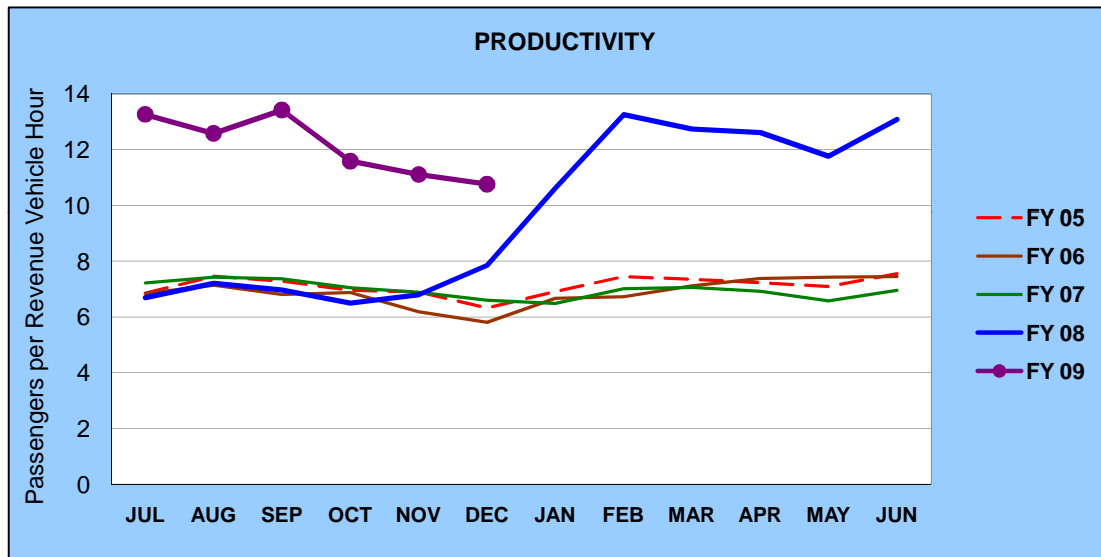
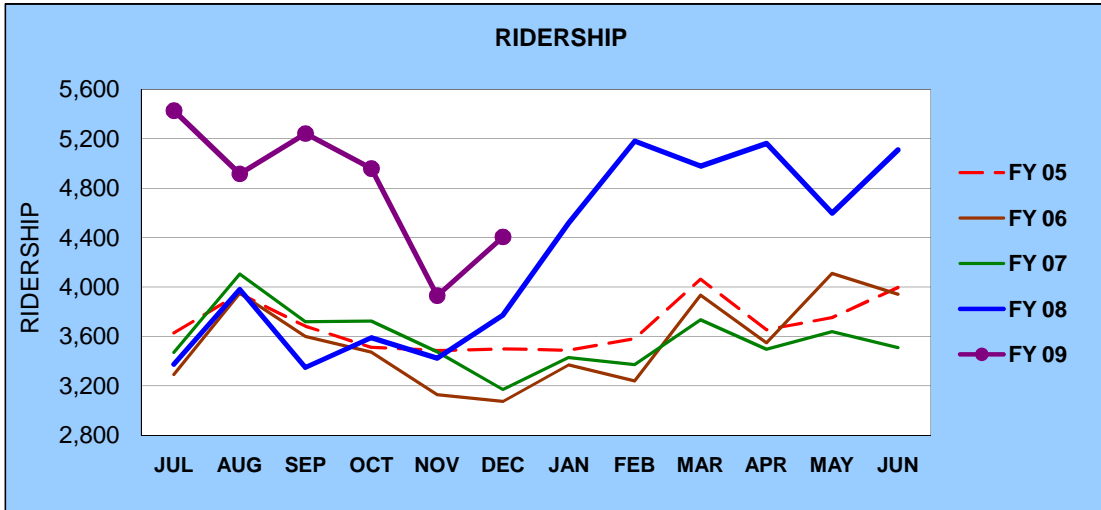
**JUL 08 - DEC 08**

	SYSTEM TOTALS		PERCENT CHANGE
	FYTD 08	FYTD 07	
<b>Cash Fares</b>			
Adult	664,360	727,636	-8.7%
Youth	184,902	220,850	-16.3%
Senior & Disabled	181,278	169,874	6.7%
<b>Total Cash Fares</b>	<b>1,030,540</b>	<b>1,118,360</b>	<b>-7.9%</b>
<b>Period Pass Fares</b>			
Adult	1,026,122	980,947	4.6%
Youth	131,509	86,548	51.9%
Senior & Disabled	818,289	802,410	2.0%
<b>Total Pass Use</b>	<b>1,975,920</b>	<b>1,869,905</b>	<b>5.7%</b>
Transfers	815,384	855,776	-4.7%
Flow Through	69,610	74,972	-7.2%
Free Rides	400,283	354,931	12.8%
RTC ACCESS ID Cash	18,508	26,900	-31.2%
Stored Ride Pass/Tickets	249,150	222,498	12.0%
Adult Ridership	2,415,898	2,453,004	-1.5%
Youth Ridership	514,738	528,044	-2.5%
Sen & Dis Ridership	1,228,476	1,187,363	3.5%
<b>Total Ridership</b>	<b>4,559,395</b>	<b>4,523,342</b>	<b>0.8%</b>
Previous Year (FYTD 08)	4,523,342		
Change	0.8%		
Average Daily Ridership	24,779	24,583	0.8%
Days Route Operated	184	184	0.0%
<b>Revenue Veh. Hours</b>	<b>138,925.1</b>	<b>145,413.7</b>	<b>-4.5%</b>
Previous Year (FYTD 08)	145,413.7		
Change	-4.5%		
<b>Passengers / RVH</b>	<b>32.8</b>	<b>31.1</b>	<b>5.5%</b>
Previous Year (FYTD 08)	31.1		
Change	5.5%		
Revenue Vehicle Miles	1,728,444.8	1,816,274.0	-4.8%
<b>Passengers / RVM</b>	<b>2.64</b>	<b>2.49</b>	<b>5.9%</b>
Previous Year (FYTD 08)	2.49		
Change	5.9%		
One-Way Trips	289,883	309,799	-6.4%
Deadhead Miles	84,180.1	88,066.6	-4.4%
Deadhead Hours	3,325.47	3,479.95	-4.4%
Est. Gross Operating Cost	\$15,199,374	\$14,272,524	6.5%
Est. Cost Per RVH	\$109.41	\$98.15	11.5%
Est. Cost Per RVM	\$8.79	\$7.86	11.9%
Est. Cost Per Passenger	\$3.33	\$3.16	5.7%

RTC Transit Operating Statistics

<b>RTC INTERCITY</b>				
<b>ROLLING 12 MONTH COMPARISON</b>				
<b>Most Recent 12 Months</b>		<b>Percent Change</b>	<b>Previous 12 Months</b>	
<b>Month</b>	<b>Ridership</b>		<b>Month</b>	<b>Ridership</b>
JAN 08	4,518	31.8%	JAN 07	3,428
FEB 08	5,181	53.7%	FEB 07	3,371
MAR 08	4,978	33.3%	MAR 07	3,734
APR 08	5,164	47.8%	APR 07	3,495
MAY 08	4,597	26.4%	MAY 07	3,637
JUN 08	5,112	45.7%	JUN 07	3,508
JUL 08	5,429	60.9%	JUL 07	3,374
AUG 08	4,916	23.5%	AUG 07	3,980
SEP 08	5,243	56.6%	SEP 07	3,348
OCT 08	4,959	38.2%	OCT 07	3,588
NOV 08	3,928	14.7%	NOV 07	3,424
DEC 08	4,405	16.8%	DEC 07	3,772
<b>TOTAL</b>	<b>58,430</b>	<b>37.0%</b>	<b>TOTAL</b>	<b>42,659</b>

### RTC INTERCITY FISCAL YEAR COMPARISONS



RTC Transit Operating Statistics

<b>RTC SIERRA SPIRIT</b>				
<b>ROLLING 12 MONTH COMPARISON</b>				
<b>Most Recent 12 Months</b>		<b>Percent Change</b>	<b>Previous 12 Months</b>	
<b>Month</b>	<b>Ridership</b>		<b>Month</b>	<b>Ridership</b>
JAN 08	37,719	46.9%	JAN 07	25,674
FEB 08	37,548	53.9%	FEB 07	24,399
MAR 08	40,963	40.8%	MAR 07	29,095
APR 08	43,583	49.2%	APR 07	29,207
MAY 08	40,432	10.8%	MAY 07	36,501
JUN 08	41,075	23.2%	JUN 07	33,350
JUL 08	44,842	28.5%	JUL 07	34,891
AUG 08	42,698	24.1%	AUG 07	34,411
SEP 08	42,958	8.5%	SEP 07	39,609
OCT 08	45,683	18.9%	OCT 07	38,421
NOV 08	40,074	8.1%	NOV 07	37,057
DEC 08	38,702	6.9%	DEC 07	36,196
<b>TOTAL</b>	<b>496,277</b>	<b>24.4%</b>	<b>TOTAL</b>	<b>398,811</b>

### RTC SIERRA SPIRIT FISCAL YEAR COMPARISONS

