



e-News Brief
An update of current RTC issues

RTC e-News Brief for April 27, 2009. This e-newsletter was created to keep you informed about key activities and issues pertaining to your RTC. I encourage you to share this information with your board members, citizen advisory groups, colleagues, employees and others who may find this information useful. If you would like additional information about a topic in this update, or another topic of interest, please let me know.

RTC staff is also available to present any RTC transportation related topic(s) to your organization, company employees, and business and citizen groups. Contact Michael Moreno, RTC Speakers Bureau @ mmoreno@rtcwashoe.com to schedule a presentation.

Derek Morse, P.E. RTC Interim Executive Director
Regional Transportation Commission
P.O. Box 30002, Reno, NV 89520
PH: 775.348.0400 Fax: 775.324-3503
Email: dmorse@rtcwashoe.com
www.rtcwashoe.com

In this issue:

SB 201 Update

RTC VANPOOL and VPSI Inc. Team Up for Earth Day Event
RTC Hosts Community Open House Events for Road Projects
RTC Board Approves RTC RAPID CMAQ Demonstration Project
RTC RIDE & RTC ACCESS Changes Effective May 3
RTC & NDOT Host VMT User Fee Program Workshop
RTC Executive Director Search
Transit Operating Statistics February 2009
RTC Outreach Report, March 2009
RTC Media Report, March 2009
“The Road Ahead with RTC” on KOLO-TV

SB 201 Update

There has been no movement on SB 201 at the Nevada Legislature. On Friday, April 24, the RGJ reported that Senate Taxation Committee Chairman Senator Bob Coffin is holding the bill at the request of Senate Majority Leader Steven Horsford. Senator Coffin stated the bill is being held for further examination to

determine how SB 201 will fit into the overall tax package. Senator Coffin said, "It's generally expected that it will pass."

A significant concern created by this lack of movement is that we are being delayed in selling bonds that will be financed from revenues generated by implementing RTC-5/SB 201. Delay in selling the bonds means delays in awarding additional work. Because of the short road construction season in Northern Nevada, quick passage of SB 201 is needed so that we can maximize the opportunity for local contractors to bid on road projects and put people back to work this year. Additionally, the use of federal stimulus funds for the Meadowood Interchange project could also be impacted if SB 201 is not passed prior to June 1.

I have been advised that SB 201 is scheduled to be discussed in a work session of the Senate Taxation Committee on May 5, 2009, at 1:30 p.m. in Room 2135. This may indicate that the committee is ready to move the bill out of committee and on to the Senate for a full vote.

I shall keep you informed as further developments occur.

RTC VANPOOL and VPSI Inc. Team Up for Earth Day Event

On Sunday, April 19, the 20th Annual Earth Day Celebration was held at Reno's Idlewild Park. RTC VANPOOL and VPSI Inc. provided free parking shuttle service to and from Reno High School and Idlewild Park during the event's operating hours of 10 a.m. to 5 p.m. The free shuttle service was fully-sponsored by VPSI Inc.

With limited parking at Idlewild Park, the park and ride service provided event goers convenient parking at Reno High School. This year, an estimated 750+ people took advantage of the free service, an increase of 80% from 2008. RTC's participation at the event also included an information booth to promote the RTC VANPOOL program, a service of [RTC SMART TRIPS](#) provided by the RTC to assist local businesses to encourage employees to use alternative modes of transportation such as transit, bicycling, carpools and vanpools.

The Earth Day celebration event was presented by Nevada EcoNet.

RTC Hosts Community Open House Events for Road Projects

On April 29, the RTC will host a community open house event to share information about the corridor improvement study for the Pyramid Highway/US 395 Connection Project. The open house will be held at the Sun Valley Neighborhood Center located at 115 West 6th Avenue in Sun Valley from 4:30 p.m. to 7 p.m. The RTC acting on behalf of NDOT, and in cooperation with the Federal Highway Administration, is conducting a federally mandated

environmental impact study to evaluate potential transportation improvements along the Pyramid Highway corridor from Queen Way to Calle de la Plata and improving connections from the Pyramid Highway west to US 395. The open house offers the public an opportunity to provide feedback about the project and meet with RTC project representatives who will be available to discuss the project, the conceptual alternatives, and answer any questions. A Spanish-speaking representative will also be available to assist with translation.

On April 30, the RTC and the City of Sparks will host a community open house to provide information to local residents and businesses about the Victorian Avenue Rehabilitation Project Phase 1. This gathering will be held at RTC CENTENNIAL PLAZA located at Victorian Square in Sparks from 5 p.m. to 7 p.m. The project's boundaries are from El Rancho Drive to 16th Street. RTC and City of Sparks staff will be available to provide specific details of the work that is to be done and discuss traffic controls for the safety of motorists and pedestrians. Please note that parking is not available on-site but on surrounding streets and parking lots within the area.

The public is encouraged to attend these open house events and provide comments to representatives about the projects. To learn more about the Pyramid Highway/US 395 Connection Project visit www.rtcwashoe.com and click on [HOT TOPICS](#) or contact RTC Project Manager Doug Maloy at e-mail dmaloy@rtcwashoe.com or by phone at (775) 335-1865. For information about Victorian Avenue Rehabilitation Project Phase 1 contact RTC Project Manager Warren Call at e-mail wcall@rtcwashoe.com or by phone at (775) 335-1881.

RTC Board Approves RTC RAPID CMAQ Demonstration Project

At the April 17, RTC Board meeting, commissioners approved implementation of the RTC RAPID CMAQ (Congestion Mitigation Air Quality) Demonstration Project in the Virginia Street Corridor. This new service will reduce a ride from RTC CITICENTER (and the future RTC 4TH STREET STATION) to Meadowood Mall by approximately 10 minutes. Additionally, the Board authorized staff to proceed with the purchase of eight diesel-electric hybrid articulated buses, which will take approximately 18 months to procure, to be used for the new service.

This project would allow the use of CMAQ funds for operation of a new service using bus rapid transit technology on South Virginia Street for a period of up to three years. The RTC RAPID is a new mode of transit service that would replace and improve upon RTC RIDE Route 1, freeing up \$2.4 million to \$3.9 million annually in local sales tax funds that could be used to offset or eliminate most of the remaining service cuts to the public transportation program shortfall as a result of declining sales tax revenues in this weak economy.

Until the articulated buses are received, RTC will retrofit existing buses to accommodate the service. An approximate launch date for the new service is expected to occur in October 2009.

RTC will provide periodic updates to the RTC Board beginning with the June meeting.

RTC RIDE & RTC ACCESS Changes Effective May 3

At the February 12, 2009, meeting of the RTC Board of Commissioners, the Board approved service reductions to RTC RIDE routes and two fare increases (implemented in two phases) for RTC ACCESS. Unfortunately, these actions were necessary as a result of the decline in general sales tax revenues in Washoe County, the primary funding source for transit services and the defeat of ballot measure RTC-2 in the November 2008 General Election.

The RTC RIDE service reduction will affect 18 of RTC RIDE's 25 routes. Most routes will see a reduction in frequency during the middle of the day and span of service on the weekends. Route 19 will be restructured to serve Wells Avenue and the Reno/Tahoe Airport; Route 14A will be eliminated. No changes occurred to RTC RIDE Routes 7, 17, 26, 28 or 54. New Bus Books will be available on April 27, 2009. These changes will be effective on May 3, 2009. For detailed information about route changes and schedules visit www.rtcwashoe.com and click on [Public Transportation](#).

Effective on May 3, 2009, the RTC ACCESS fare for a one-way trip will cost \$2.50 (one ticket) inside the ADA zone (Americans with Disabilities Act). A one-way trip outside the ADA zone will cost two tickets. A book of 10 tickets will cost \$25.00. Customers with existing ticket books will be able to use their tickets after the fare increases.

The RTC Board did not make any changes to the RTC ACCESS service area boundaries. The ADA zone boundaries are mandated by the federal act and are identified to be within $\frac{3}{4}$ mile from existing fixed-route bus routes. The RTC also provides enhanced service for RTC ACCESS customers 24 hours a day, 7 days a week, 365 days a year. The ADA only requires paratransit service be available during regular operating hours of fixed-route service for each route. To learn more about [RTC ACCESS](#) visit www.rtcwashoe.com.

RTC & NDOT Host VMT User Fee Program Workshop

The RTC and NDOT are conducting a joint VMT (Vehicle Miles Traveled) User Fee Program Workshop to study an alternative revenue source for transportation infrastructure that will be based on the distance vehicles travel on streets and highways. The University of Nevada, Reno and a project consultant have been retained to assist with the study. Many transportation agencies in the country are in the process of evaluating VMT User Fee Programs due to the increasing ineffectiveness of fuel taxes that have traditionally served to generate revenues for operating, maintaining, preserving and expanding the nation's and local communities' street and highway programs.

The workshop will be held on Saturday, May 9, from 8:00 a.m. to noon at UNR in Ballroom C at the Joe Crowley Student Union Building to solicit input from participants regarding the various items associated with this program, including but not limited to policy framework, privacy issues, equity and technological issues. Free parking will be available at the UNR campus.

To attend the workshop, contact RTC Project Manager Alauddin Khan at e-mail akhan@rtcwashoe.com or by phone at (775) 332-2145.

RTC Executive Director Search

At their April board meeting, the RTC Board of Commissioners approved an [official job announcement](#) for recruitment of the next RTC Executive Director. The filing deadline for interested individuals is May 11, 2009, at 4:00 p.m. Each RTC Commissioner will identify a community representative to participate on the Interview Committee and will submit the top two candidates to the Board for final selection.

Transit Operating Statistics February 2009

Over the last 12 months, there were 8.94 million transit system rides. On October 26, 2008, service was reduced approximately 6.8% and the allowed transfer time was reduced from 120 to 90 minutes.

For February, there were 634,360 rides, 14% lower than February 2008; however, last year February had one extra day. Average daily ridership at 22,656 was 11% lower than last year. Service hours were down 12% from last year. Declining ridership may be a result of less service hours, in addition to passengers riding less often because of job loss or not at all.

Adult ridership was down 20%; youth ridership was down 8.1%. Senior & disabled ridership was down 6.4%.

RTC INTERCITY ridership at 4,214 was down 19% compared with last year. Productivity at 11.3 passengers per service hour was down 15% compared with last year.

RTC SIERRA SPIRIT ridership was 35,891 down 4.4% compared with last year. Productivity at 34.7 passengers per service hour was up 14% compared with last year and the fifth highest in the system.

The February 2009 RTC Transit Operating Statistics report is included in this e-News Brief.

RTC Outreach Report, March 2009

Included in this update is the March 2009 RTC Outreach Report.

RTC Media Report, March 2009

Included in this update is the March 2009 RTC Outreach Report.

“The Road Ahead with RTC” on KOLO-TV

“The Road Ahead with RTC” airs on Tuesdays at 6:20 a.m. during “Daybreak.” This weekly news segment features experts discussing a wide range of transportation issues. Following each broadcast, webcasts of each interview will be available on [kolotv.com](http://www.kolotv.com) for at least one month. To view interviews, click on this link: <http://www.kolotv.com/rtc>.

Scheduled interviews:

- April 21: Make Every Day Earth Day
- April 28: Victorian Avenue Rehabilitation Project
- May 5: RTC RIDE Changes Effective May 3

This is Your RTC.



REGIONAL TRANSPORTATION COMMISSION

Public Transportation • Streets and Highways • Planning

RTC TRANSIT OPERATING STATISTICS

**RTC RIDE
RTC INTERCITY
RTC SIERRA SPIRIT**

February 2009

RTC TRANSIT OPERATING STATISTICS REPORT

February 2009

TABLE OF CONTENTS

RTC Transit Highlights	Page ii
RTC Transit Summary.....	Page iii
System Reports.....	Page 1
Route Comparison Data.....	Page 4
Economic Data	Page 5
Monthly Operating Statistics.....	Page 8
RTC INTERCITY	Page 22
RTC SIERRA SPIRIT	Page 24

RTC TRANSIT HIGHLIGHTS

February 2009

RTC Transit

There were 8.94 million rides over the last twelve months. This is 0.3% lower than the previous twelve months. There were 634,360 rides this month, 14% lower than last February. However, last February had one extra day. Weighted average daily ridership at 22,656 was 11% lower than last February. There was one less weekday this month compared with last year. RVH is down 12% compared with last year. Productivity at 31.3 passengers per service hour is down 2.2% compared with last year.

External Impacts on Ridership

According to AAA, retail gas prices hit an all time record of \$4.22 on June 22, 2008. This is over a dollar higher than the previous year. However, by the end of February it had fallen to around \$2.22.

On October 26, 2008, service was reduced by around 6.8% and transfer time was reduced from 120 to 90 minutes. Routes 11X and 55 were eliminated. Span of service and/or frequency were reduced for most all routes.

Climate was worse this month compared with last February. Although, average temperature at 40.1°F was 1.2°F warmer than last year, there were seven days of precipitation this month compared with five last year. This includes five days of precipitation on weekdays versus two last year. There were also four days of snow this month compared with three last year.

Reno-Sparks employment has been falling since peaking at 220K jobs in July 2008. **The preliminary unemployment rate was 11.2% this month. This is the highest rate on record (1990) and higher than the national rate of 8.1%. Nevada's unemployment rate of 10.1% in February is the highest since 1982.** A US Census Bureau report also indicates a slowdown in local population growth as well.

RTC TRANSIT SUMMARY

RTC Transit Fare Categories

- **Adult ridership was down 20% compared with last year** (page 14). **Adult ridership made up only 56% of total ridership, the lowest percentage ever.** By comparison, in February 1996 adult ridership made up 71% of total ridership. There were 111,759 fewer adult rides this month compared with February 1996.
- Youth ridership was down 8.1%. Youth made up 13% of total ridership, the highest percent for February ever.
- Senior & disabled ridership was down 6.4%. **Senior & disabled ridership made up 31% of total ridership this month, the highest for February ever.** This is approaching a third of all ridership.
- Pass ridership fell 4.9% compared with last year while **cash ridership fell 23%.** **Total pass ridership** (including estimated transfers for stored ride passes and flow through) **now makes up 58% of all ridership, the third highest percentage ever.**
- On October 26, 2008, the allotted time on transfers was reduced from 120 to 90 minutes. The transfer rate was 54% this month (i.e., transfers are used 54 times for every 100 cash and stored ride pass ride). **This is the lowest rate since September 2005.** In February 2003 the transfer time was increased from 90 minutes to 120 minutes, and in June 2004, round-tripping on any route in any direction was allowed.

RTC INTERCITY

- **There were 4,214 rides this month, down 19% compared with last February** (page 22). **At 11.3 passengers per service hour, productivity is down 15% compared with last February.**
- **There were 57,037 rides over the last twelve months, up 25% compared with the previous twelve months.**

RTC SIERRA SPIRIT

- There were 35,891 rides this month, down 4.4% compared with last February (page 24). **RTC SIERRA SPIRIT has the fifth highest ridership in the system. Productivity at 34.7 passengers per service hour is up 14% and is the highest rate for February. This is the fifth highest rate in the system.**
- **There were 492,616 rides over the last twelve months, up 16% over the previous twelve months.**

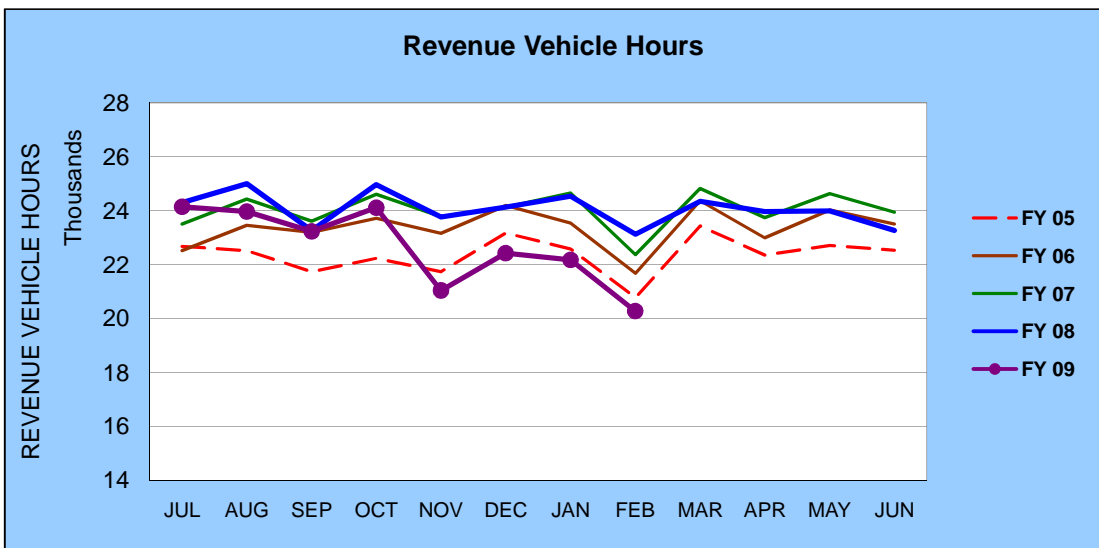
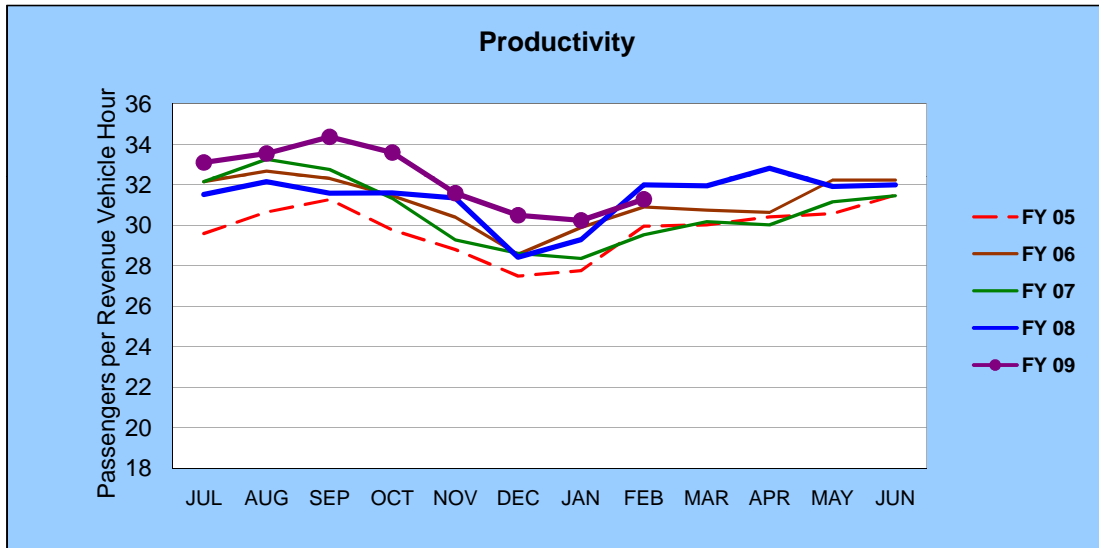
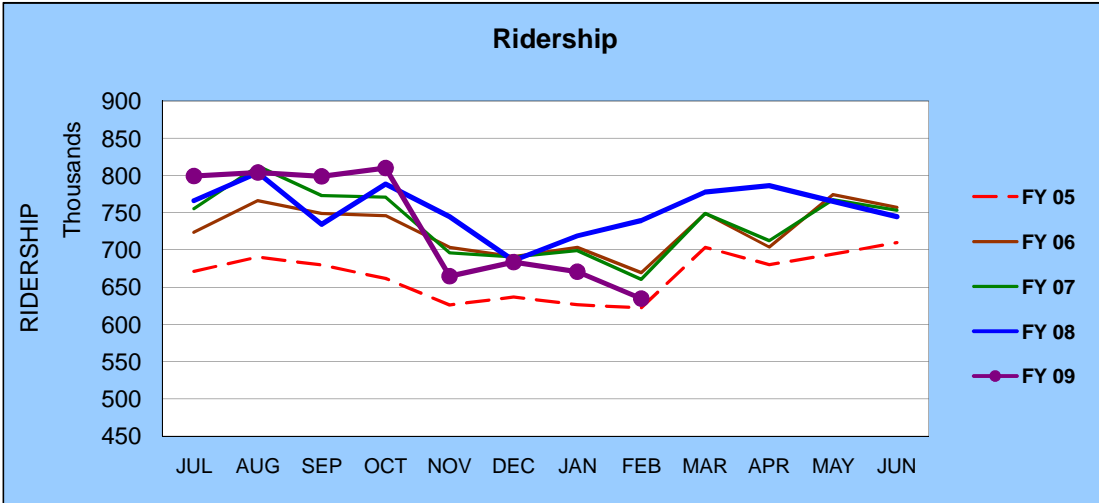
RTC Transit Operating Statistics

RTC Transit				
ROLLING 12 MONTH RIDERSHIP COMPARISON				
Most Recent 12 Months		Percent Change	Previous 12 Months	
Month	Ridership		Month	Ridership
MAR 08	777,928	3.9%	MAR 07	749,001
APR 08	786,548	10.4%	APR 07	712,503
MAY 08	765,501	-0.3%	MAY 07	767,594
JUN 08	744,594	-1.1%	JUN 07	753,256
JUL 08	798,980	4.3%	JUL 07	766,064
AUG 08	803,968	0.0%	AUG 07	803,655
SEP 08	798,438	8.7%	SEP 07	734,293
OCT 08	809,811	2.7%	OCT 07	788,821
NOV 08	664,631	-10.7%	NOV 07	744,646
DEC 08	683,567	-0.3%	DEC 07	685,863
JAN 09	670,666	-6.7%	JAN 08	718,890
FEB 09	634,360	-14.2%	FEB 08	739,730
TOTAL	8,938,992	-0.3%	TOTAL	8,964,316

RTC Transit includes RTC RIDE, RTC INTERCITY, & RTC SIERRA SPIRIT

RTC Transit

FISCAL YEAR COMPARISONS



RTC Transit

WEIGHTED AVERAGE DAILY RIDERSHIP							
Month	FY 2009	FY 2009 CHANGE FROM			FY 2008	FY 2007	FY 2006
		FY 2008	FY 2007	FY 2006			
JUL	25,839	2.4%	2.7%	7.2%	25,236	25,155	24,105
AUG	26,307	2.6%	1.4%	7.6%	25,641	25,944	24,450
SEP	26,856	5.8%	2.2%	6.6%	25,380	26,267	25,195
OCT	25,819	2.6%	3.2%	4.8%	25,159	25,020	24,635
NOV	23,165	-8.0%	-1.6%	-2.7%	25,181	23,548	23,798
DEC	22,323	-3.0%	-3.8%	-0.3%	23,020	23,203	22,396
JAN	21,996	-6.1%	-3.2%	-6.1%	23,419	22,721	23,419
FEB	22,656	-10.8%	-4.0%	-6.4%	25,402	23,589	24,199
MAR					25,517	24,124	23,875
APR					26,020	23,996	23,986
MAY					25,068	24,908	25,107
JUN					25,039	25,180	25,051

Weighted Avg. Daily Ridership = (avg. weekday X 5) + avg. Saturday + avg. Sunday) / 7
 Holidays are excluded from the weighted average.

WEEKDAY, SATURDAY, AND SUNDAY RIDERSHIP ROLLING TWELVE MONTH COMPARISON									
Month	Weekday			Saturday			Sunday		
	Recent 12 Mos.	Percent Change	Previous 12 Mos.	Recent 12 Mos.	Percent Change	Previous 12 Mos.	Recent 12 Mos.	Percent Change	Previous 12 Mos.
MAR	28,794	6.5%	27,026	20,332	4.5%	19,465	14,317	0.3%	14,279
APR	28,988	7.0%	27,093	21,140	11.3%	18,996	16,065	18.9%	13,513
MAY	28,023	0.6%	27,863	20,806	2.9%	20,219	14,554	-1.8%	14,823
JUN	27,981	-1.0%	28,260	19,843	-0.6%	19,966	15,523	3.5%	14,992
JUL	28,837	1.6%	28,390	20,971	5.8%	19,819	15,717	5.6%	14,881
AUG	29,192	2.2%	28,571	22,110	2.2%	21,631	16,078	7.2%	14,998
SEP	29,979	5.8%	28,338	22,541	9.4%	20,602	15,556	1.2%	15,369
OCT	28,961	3.0%	28,119	20,854	0.4%	20,777	15,074	2.2%	14,744
NOV	26,021	-7.7%	28,194	18,652	-9.3%	20,571	13,396	-9.0%	14,728
DEC	25,143	-2.4%	25,752	17,743	-4.6%	18,592	12,805	-7.1%	13,785
JAN	24,794	-5.6%	26,262	17,617	-7.2%	18,992	12,386	-9.2%	13,635
FEB	25,513	-10.4%	28,466	18,012	-12.7%	20,627	13,012	-12.4%	14,859

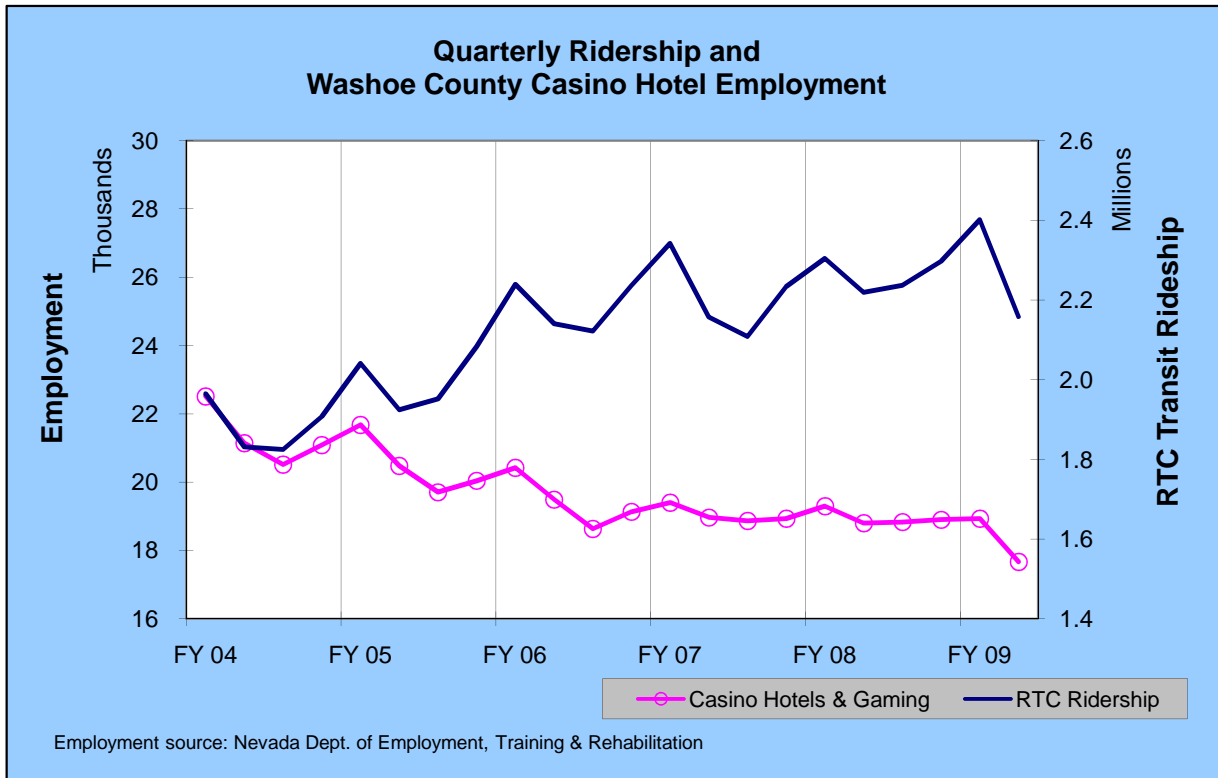
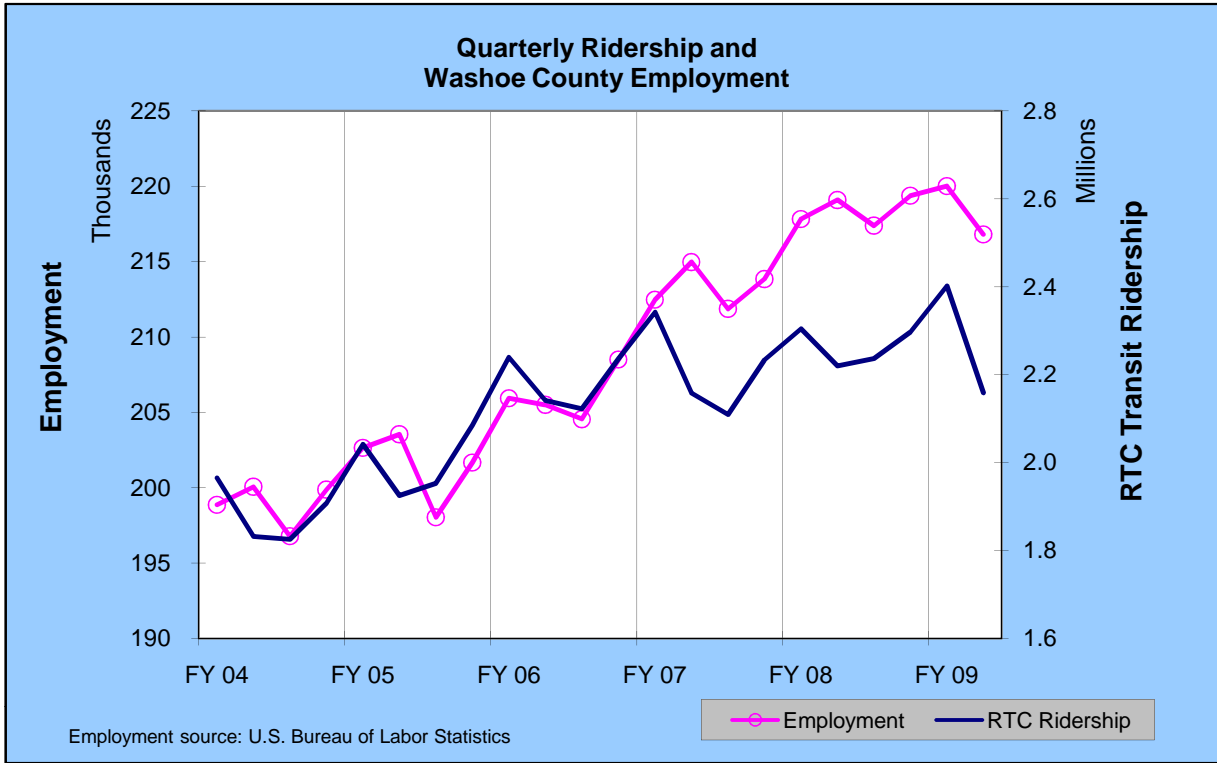
RTC ROUTE COMPARISON REPORT

Feb 2009

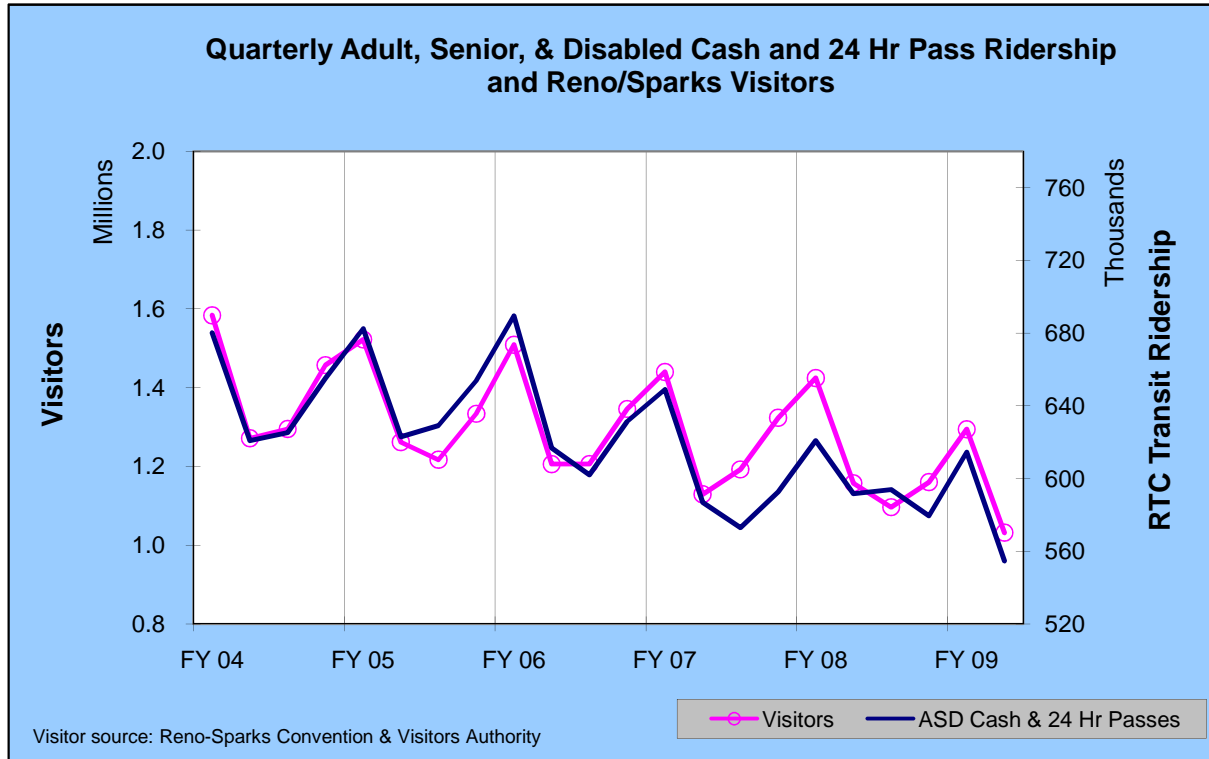
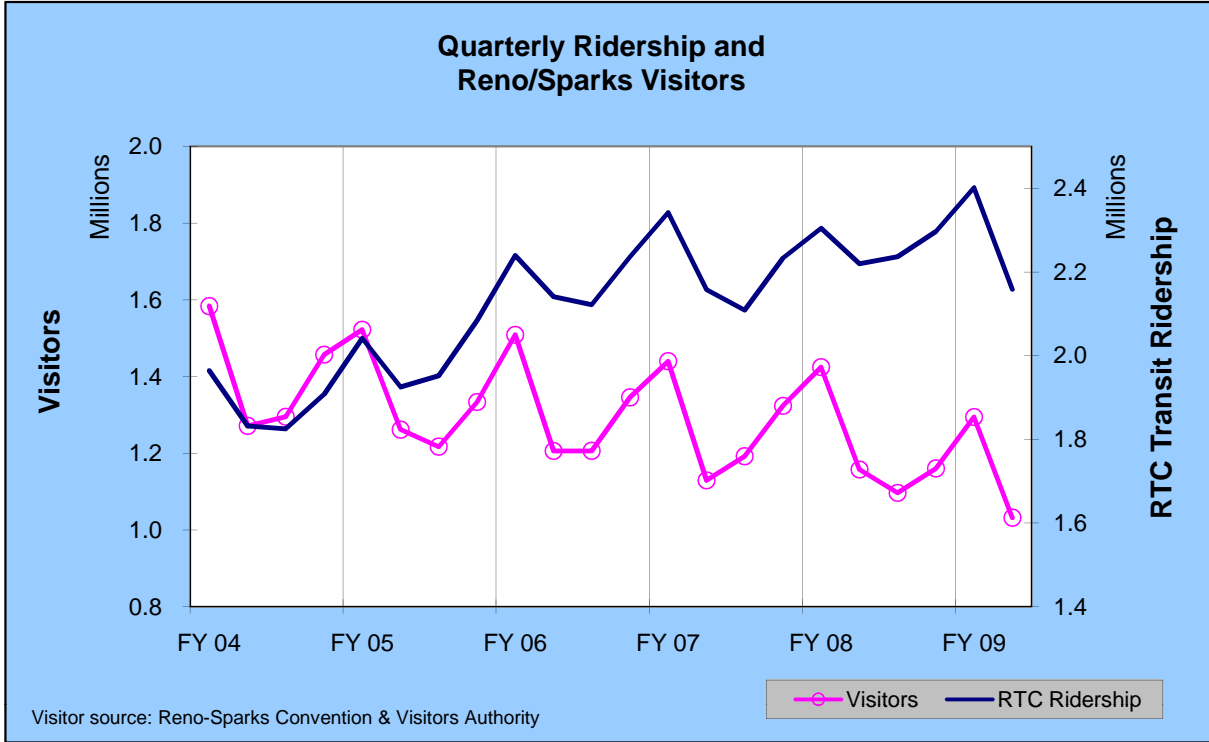
Route *	Productivity	Route	Ridership	Route	Ridership Change From Last Year
1	45.2	1	124,666	11	36.1%
15	43.7	2	64,542	7	10.3%
11	39.6	11	54,015	54	10.0%
5	39.4	9	48,779	57	5.9%
RTC SS	34.7	RTC SS	35,891	25	5.8%
2	33.7	7	35,795	28	0.0%
3	32.0	5	34,129	RTC SS	-4.4%
4	31.3	15	33,766	6	-5.7%
TOTAL	31.2	14	31,797	4	-9.6%
14	29.6	6	26,310	21	-10.2%
57	28.7	3	23,686	3	-10.4%
6	26.9	13	17,748	13	-10.8%
18	26.8	18	17,060	18	-11.0%
9	26.4	4	15,468	2	-11.2%
7	25.9	21	10,642	9	-11.7%
13	24.2	16	10,279	15	-11.9%
16	24.1	17	10,024	16	-13.0%
56	20.3	57	8,125	TOTAL	-14.2%
25	20.0	56	7,316	19	-16.9%
19	19.3	54	6,942	1	-17.5%
21	19.2	26	5,516	14	-17.5%
54	18.4	RTC IC	4,214	RTC IC	-18.7%
17	16.3	25	3,953	26	-21.3%
26	15.9	19	3,035	5	-22.0%
RTC IC	11.3	28	662	17	-31.0%
28	8.2	TOTAL	634,360	56	-41.1%

* - RTC IC is RTC INTERCITY. RTC SS is RTC SIERRA SPIRIT

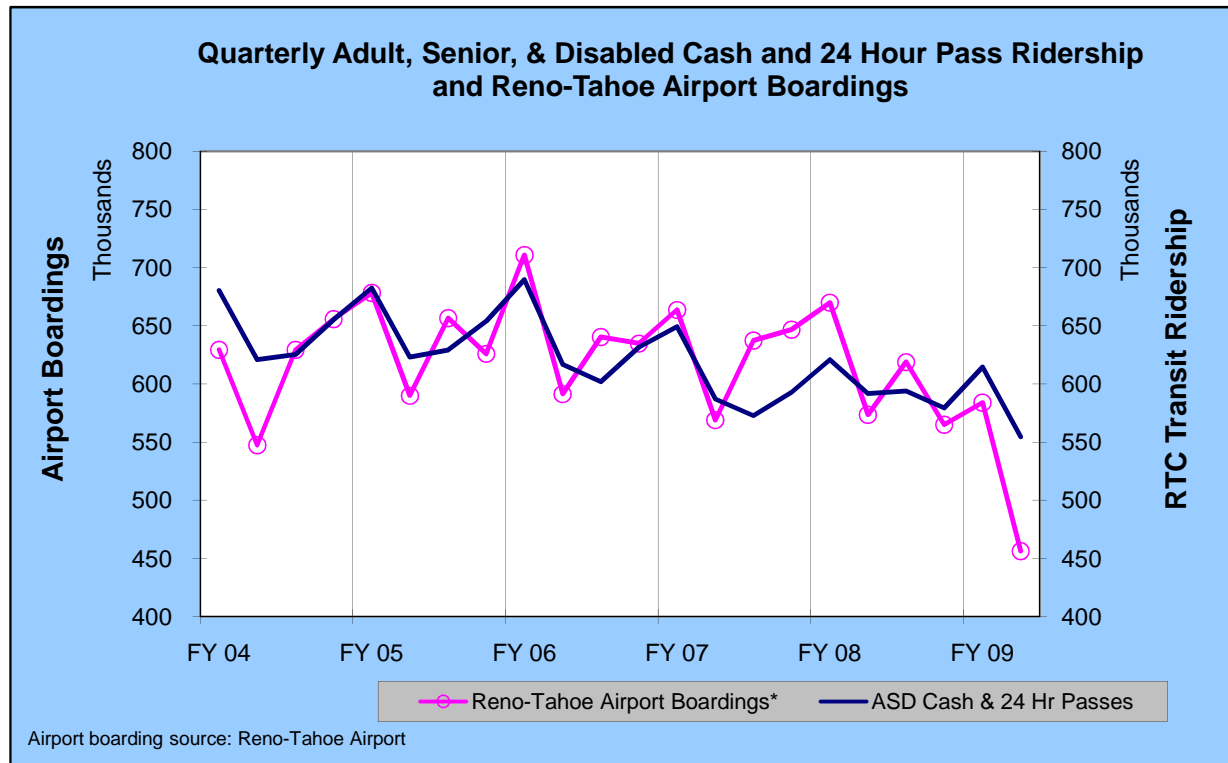
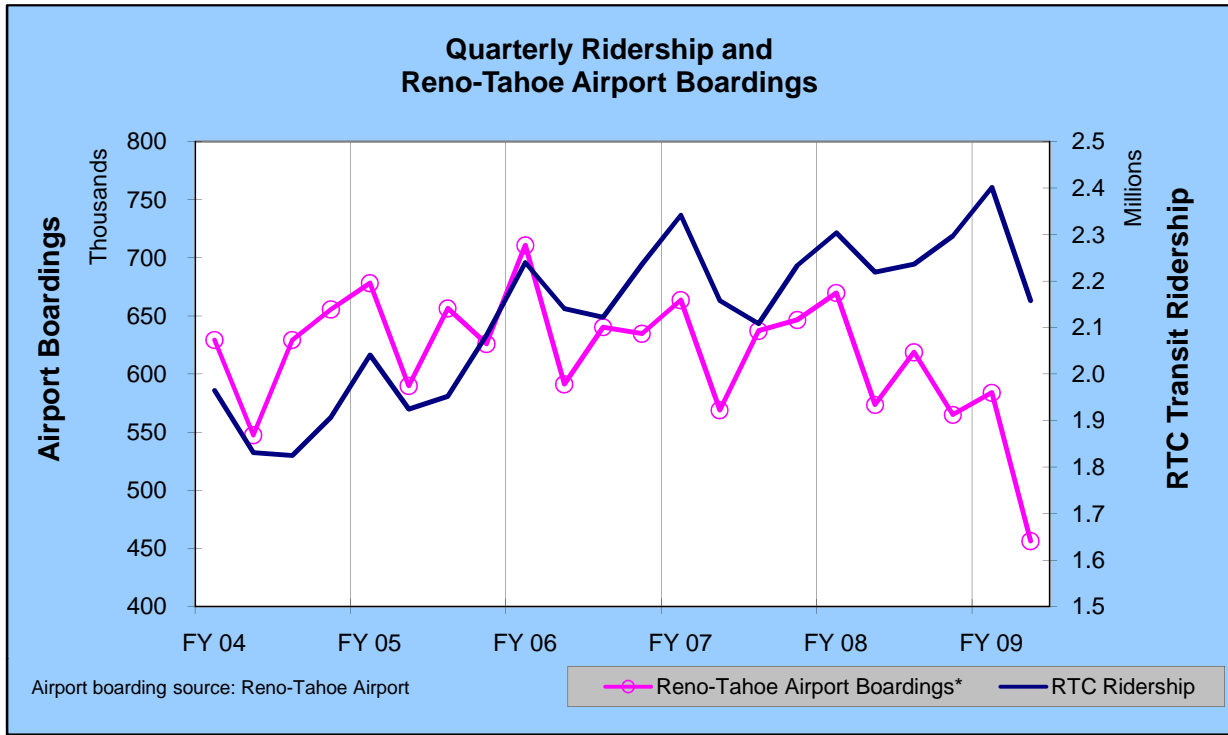
RTC Transit



RTC Transit



RTC Transit



FEBRUARY 2009

	ROUTE					
	1	2	3	4	5	6
Total Ridership	124,666	64,542	23,686	15,468	34,129	26,310
Previous Year (FEB 08)	151,162	72,709	26,429	17,120	43,762	27,899
Change	-17.5%	-11.2%	-10.4%	-9.6%	-22.0%	-5.7%
Average Daily Ridership	4,452	2,305	846	552	1,219	940
Days Route Operated	28	28	28	28	28	28
Revenue Veh. Hours	2,757.5	1,913.6	740.6	493.5	866.2	977.3
Previous Year (FEB 08)	2,931.3	2,121.5	784.5	512.0	1,012.6	1,042.8
Change	-5.9%	-9.8%	-5.6%	-3.6%	-14.5%	-6.3%
Passengers / RVH	45.2	33.7	32.0	31.3	39.4	26.9
Previous Year (FEB 08)	51.6	34.3	33.7	33.4	43.2	26.8
Change	-12.3%	-1.6%	-5.1%	-6.3%	-8.8%	0.6%
Revenue Vehicle Miles	24,394.3	20,142.2	10,323.2	6,640.8	12,062.5	10,700.1
Passengers / RVM	5.11	3.20	2.29	2.33	2.83	2.46
Previous Year (FEB 08)	5.83	3.28	2.42	2.48	2.95	2.43
Change	-12.3%	-2.2%	-5.3%	-6.3%	-4.0%	1.3%
One-Way Trips	4,912	3,002	1,500	988	1,752	1,436
Deadhead Miles	1,263.0	1,066.6	494.0	344.4	490.8	412.0
Deadhead Hours	49.13	41.88	19.53	11.20	22.20	14.02
Est. Gross Operating Cost	\$301,686	\$209,361	\$81,027	\$53,996	\$94,768	\$106,920
Est. Cost Per RVH	\$109.41	\$109.41	\$109.41	\$109.41	\$109.41	\$109.41
Est. Cost Per RVM	\$12.37	\$10.39	\$7.85	\$8.13	\$7.86	\$9.99
Est. Cost Per Passenger	\$2.42	\$3.24	\$3.42	\$3.49	\$2.78	\$4.06

FEBRUARY 2009

	ROUTE				
	7	9	10	11	11X
Total Ridership	35,795	48,779		54,015	
Previous Year (FEB 08)	32,446	55,254	7,859	39,687	16,625
Change	10.3%	-11.7%		36.1%	
Average Daily Ridership	1,278	1,742		1,929	
Days Route Operated	28	28		28	
Revenue Veh. Hours	1,381.6	1,844.5		1,365.3	
Previous Year (FEB 08)	1,057.6	2,161.4	399.7	1,208.8	434.0
Change	30.6%	-14.7%		12.9%	
Passengers / RVH	25.9	26.4		39.6	
Previous Year (FEB 08)	30.7	25.6	19.7	32.8	38.3
Change	-15.6%	3.5%		20.5%	
Revenue Vehicle Miles	27,604.2	17,605.4		10,995.8	
Passengers / RVM	1.30	2.77		4.91	
Previous Year (FEB 08)	1.36	2.64	1.61	3.09	2.54
Change	-4.5%	4.9%		58.9%	
One-Way Trips	1,860	2,692		3,472	
Deadhead Miles	776.4	970.8		641.3	
Deadhead Hours	29.18	38.22		26.33	
Est. Gross Operating Cost	\$151,157	\$201,797		\$149,370	
Est. Cost Per RVH	\$109.41	\$109.41		\$109.41	
Est. Cost Per RVM	\$5.48	\$11.46		\$13.58	
Est. Cost Per Passenger	\$4.22	\$4.14		\$2.77	

FEBRUARY 2009

	ROUTE				
	13	14	15	16	17
Total Ridership	17,748	31,797	33,766	10,279	10,024
Previous Year (FEB 08)	19,897	38,559	38,341	11,809	14,519
Change	-10.8%	-17.5%	-11.9%	-13.0%	-31.0%
Average Daily Ridership	634	1,136	1,206	367	358
Days Route Operated	28	28	28	28	28
Revenue Veh. Hours	734.5	1,074.4	771.8	427.0	613.5
Previous Year (FEB 08)	831.8	1,413.8	870.0	424.6	726.6
Change	-11.7%	-24.0%	-11.3%	0.6%	-15.6%
Passengers / RVH	24.2	29.6	43.7	24.1	16.3
Previous Year (FEB 08)	23.9	27.3	44.1	27.8	20.0
Change	1.0%	8.5%	-0.7%	-13.5%	-18.2%
Revenue Vehicle Miles	6,307.1	10,630.3	9,492.8	4,542.6	13,358.0
Passengers / RVM	2.81	2.99	3.56	2.26	0.75
Previous Year (FEB 08)	2.77	2.87	3.72	2.43	0.91
Change	1.5%	4.4%	-4.4%	-6.7%	-17.2%
One-Way Trips	1,476	2,188	1,552	1,424	932
Deadhead Miles	211.8	999.7	351.1	284.0	415.5
Deadhead Hours	7.13	46.80	14.20	11.29	16.43
Est. Gross Operating Cost	\$80,356	\$117,547	\$84,440	\$46,717	\$67,125
Est. Cost Per RVH	\$109.41	\$109.41	\$109.41	\$109.41	\$109.41
Est. Cost Per RVM	\$12.74	\$11.06	\$8.90	\$10.28	\$5.03
Est. Cost Per Passenger	\$4.53	\$3.70	\$2.50	\$4.54	\$6.70

FEBRUARY 2009

	ROUTE					
	18	18X	19	21	22	25
Total Ridership	17,060		3,035	10,642		3,953
Previous Year (FEB 08)	19,172	1,766	3,653	11,849	1,624	3,737
Change	-11.0%		-16.9%	-10.2%		5.8%
Average Daily Ridership	609		126	380		165
Days Route Operated	28		24	28		24
Revenue Veh. Hours	635.8		157.3	552.9		197.6
Previous Year (FEB 08)	697.3	96.6	198.0	492.7	119.7	183.1
Change	-8.8%		-20.6%	12.2%		7.9%
Passengers / RVH	26.8		19.3	19.2		20.0
Previous Year (FEB 08)	27.5	18.3	18.5	24.0	13.6	20.4
Change	-2.4%		4.6%	-20.0%		-2.0%
Revenue Vehicle Miles	7,277.0		1,182.6	6,488.5		2,592.7
Passengers / RVM	2.34		2.57	1.64		1.52
Previous Year (FEB 08)	2.38	1.11	2.27	2.49	0.94	1.57
Change	-1.5%		13.2%	-34.1%		-2.7%
One-Way Trips	1,296		584	1,712		624
Deadhead Miles	510.0		96.7	274.2		98.3
Deadhead Hours	23.80		3.91	11.25		4.04
Est. Gross Operating Cost	\$69,561		\$17,206	\$60,487		\$21,619
Est. Cost Per RVH	\$109.41		\$109.41	\$109.41		\$109.41
Est. Cost Per RVM	\$9.56		\$14.55	\$9.32		\$8.34
Est. Cost Per Passenger	\$4.08		\$5.67	\$5.68		\$5.47

FEBRUARY 2009

	ROUTE					
	26	37	54	55	56	57
Total Ridership	5,516		6,942		7,316	8,125
Previous Year (FEB 08)	7,013	5,525	6,313	2,168	12,431	7,673
Change	-21.3%		10.0%		-41.1%	5.9%
Average Daily Ridership	197		248		261	290
Days Route Operated	28		28		28	28
Revenue Veh. Hours	346.5		377.1		360.3	283.1
Previous Year (FEB 08)	285.5	290.0	234.4	226.4	402.6	339.4
Change	21.4%		60.9%		-10.5%	-16.6%
Passengers / RVH	15.9		18.4		20.3	28.7
Previous Year (FEB 08)	24.6	19.1	26.9	9.6	30.9	22.6
Change	-35.2%		-31.6%		-34.2%	27.0%
Revenue Vehicle Miles	3,710.0		5,963.2		5,430.7	5,750.8
Passengers / RVM	1.49		1.16		1.35	1.41
Previous Year (FEB 08)	1.71	0.66	1.46	1.05	2.02	1.06
Change	-13.2%		-20.5%		-33.4%	33.8%
One-Way Trips	1,032		744		1,096	880
Deadhead Miles	171.6		430.5		372.3	121.3
Deadhead Hours	7.03		16.45		13.50	4.25
Est. Gross Operating Cost	\$37,913		\$41,254		\$39,416	\$30,969
Est. Cost Per RVH	\$109.41		\$109.41		\$109.41	\$109.41
Est. Cost Per RVM	\$10.22		\$6.92		\$7.26	\$5.39
Est. Cost Per Passenger	\$6.87		\$5.94		\$5.39	\$3.81

FEBRUARY 2009

	28	ROUTE	RTC IC	RTC SS	MISC SERVICE
Total Ridership	662		4,214	35,891	
Previous Year (FEB 08)			5,181	37,548	
Change			-18.7%	-4.4%	
Average Daily Ridership	33		211	1,282	
Days Route Operated	20		20	28	
Revenue Veh. Hours	80.3		372.0	1,035.0	
Previous Year (FEB 08)			390.6	1,236.0	
Change			-4.8%	-16.3%	
Passengers / RVH	8.2		11.3	34.7	
Previous Year (FEB 08)			13.3	30.4	
Change			-14.6%	14.2%	
Revenue Vehicle Miles	1,520.0		11,786.8	9,776.7	
Passengers / RVM	0.44		0.36	3.67	
Previous Year (FEB 08)			0.42	3.27	
Change			-14.6%	12.2%	
One-Way Trips	200		360	2,098	
Deadhead Miles	103.3		555.2	630.0	
Deadhead Hours	3.95		25.67	29.40	
Est. Gross Operating Cost	\$8,789		\$40,699	\$113,236	
Est. Cost Per RVH	\$109.41		\$109.41	\$109.41	
Est. Cost Per RVM	\$5.78		\$3.45	\$11.58	
Est. Cost Per Passenger	\$13.28		\$9.66	\$3.16	

FEBRUARY 2009

	SYSTEM TOTALS		PERCENT CHANGE
	FEB 09	FEB 08	
Cash Fares			
Adult	83,154	114,675	-27.5%
Youth	23,851	31,274	-23.7%
Senior & Disabled	26,191	25,986	0.8%
Total Cash Fares	133,196	171,935	-22.5%
Period Pass Fares			
Adult	153,624	167,025	-8.0%
Youth	26,278	17,569	49.6%
Senior & Disabled	123,406	134,489	-8.2%
Total Period Pass Fares	303,308	319,083	-4.9%
Transfers	97,832	136,250	-28.2%
Flow Through	7,866	12,122	-35.1%
Free Rides	51,970	58,251	-10.8%
RTC ACCESS ID Cash	2,642	3,089	-14.5%
Stored Ride Pass	37,546	39,000	-3.7%
Adult Ridership	325,561	405,540	-19.7%
Youth Ridership	75,274	81,926	-8.1%
Sen & Dis Ridership	181,555	194,013	-6.4%
Total Ridership	634,360	739,730	-14.2%
Previous Year (FEB 08)	739,730		
Change	-14.2%		
Average Daily Ridership	22,656	25,508	-11.2%
Days Route Operated	28	29	-3.4%
Revenue Veh. Hours	20,359.0	23,125.3	-12.0%
Previous Year (FEB 08)	23,125.3		
Change	-12.0%		
Passengers / RVH	31.2	32.0	-2.6%
Previous Year (FEB 08)	32.0		
Change	-2.6%		
Revenue Vehicle Miles	246,278.2	289,444.0	-14.9%
Passengers / RVM	2.58	2.56	0.8%
Previous Year (FEB 08)	2.56		
Change	0.8%		
One-Way Trips	39,812	49,411	-19.4%
Deadhead Miles	12,084.8	13,782.9	-12.3%
Deadhead Hours	490.80	551.01	-10.9%
Est. Gross Operating Cost	\$2,227,416	\$2,269,777	-1.9%
Est. Cost Per RVH	\$109.41	\$98.15	11.5%
Est. Cost Per RVM	\$9.04	\$7.84	15.3%
Est. Cost Per Passenger	\$3.51	\$3.07	14.4%

JUL 08 - FEB 09

	ROUTE					
	1	2	3	4	5	6
Total Ridership	1,178,510	597,809	215,468	140,477	349,030	226,334
Previous Year (FYTD 08)	1,242,854	608,446	189,395	137,926	334,605	217,792
Change	-5.2%	-1.7%	13.8%	1.8%	4.3%	3.9%
Average Daily Ridership	4,850	2,460	887	578	1,436	931
Days Route Operated	243	243	243	243	243	243
Revenue Veh. Hours	24,063.3	16,861.2	6,372.1	4,269.5	7,832.4	8,452.9
Previous Year (FYTD 08)	24,442.4	17,605.2	6,448.6	4,289.8	8,406.7	8,606.3
Change	-1.6%	-4.2%	-1.2%	-0.5%	-6.8%	-1.8%
Passengers / RVH	49.0	35.5	33.8	32.9	44.6	26.8
Previous Year (FYTD 08)	50.8	34.6	29.4	32.2	39.8	25.3
Change	-3.7%	2.6%	15.1%	2.3%	12.0%	5.8%
Revenue Vehicle Miles	212,973.4	178,329.2	88,058.1	57,448.0	111,958.6	92,972.4
Passengers / RVM	5.53	3.35	2.45	2.45	3.12	2.43
Previous Year (FYTD 08)	5.88	3.30	2.17	2.46	2.69	2.27
Change	-6.0%	1.7%	13.0%	-0.5%	15.9%	7.2%
One-Way Trips	42,890	26,814	12,793	8,547	15,620	12,477
Deadhead Miles	10,703.9	9,450.2	4,803.4	2,988.9	3,857.3	3,443.4
Deadhead Hours	422.35	360.38	172.64	97.20	165.53	118.52
Est. Gross Operating Cost	\$2,632,688	\$1,844,729	\$697,152	\$467,107	\$856,921	\$924,802
Est. Cost Per RVH	\$109.41	\$109.41	\$109.41	\$109.41	\$109.41	\$109.41
Est. Cost Per RVM	\$12.36	\$10.34	\$7.92	\$8.13	\$7.65	\$9.95
Est. Cost Per Passenger	\$2.23	\$3.09	\$3.24	\$3.33	\$2.46	\$4.09

JUL 08 - FEB 09

	ROUTE				
	7	9	10	11	11X
Total Ridership	305,414	425,362	27,144	406,169	74,981
Previous Year (FYTD 08)	260,526	461,399	58,666	368,992	139,615
Change	17.2%	-7.8%	-53.7%	10.1%	-46.3%
Average Daily Ridership	1,257	1,750	232	1,671	641
Days Route Operated	243	243	117	243	117
Revenue Veh. Hours	10,347.7	16,603.5	1,498.8	10,829.6	1,717.6
Previous Year (FYTD 08)	8,780.2	17,978.4	3,350.2	10,042.3	3,564.0
Change	17.9%	-7.6%	-55.3%	7.8%	-51.8%
Passengers / RVH	29.5	25.6	18.1	37.5	43.7
Previous Year (FYTD 08)	29.7	25.7	17.5	36.7	39.2
Change	-0.5%	-0.2%	3.4%	2.1%	11.4%
Revenue Vehicle Miles	217,591.4	159,786.0	19,640.5	99,713.2	25,946.2
Passengers / RVM	1.40	2.66	1.38	4.07	2.89
Previous Year (FYTD 08)	1.31	2.65	1.55	3.47	2.55
Change	6.9%	0.3%	-10.8%	17.5%	13.3%
One-Way Trips	15,976	24,433	3,287	29,548	6,375
Deadhead Miles	6,645.7	7,969.7	928.7	5,786.4	993.8
Deadhead Hours	234.59	304.39	38.90	237.31	35.98
Est. Gross Operating Cost	\$1,132,105	\$1,816,542	\$163,977	\$1,184,833	\$187,914
Est. Cost Per RVH	\$109.41	\$109.41	\$109.41	\$109.41	\$109.41
Est. Cost Per RVM	\$5.20	\$11.37	\$8.35	\$11.88	\$7.24
Est. Cost Per Passenger	\$3.71	\$4.27	\$6.04	\$2.92	\$2.51

JUL 08 - FEB 09

	ROUTE				
	13	14	15	16	17
Total Ridership	152,693	299,123	297,893	79,676	96,491
Previous Year (FYTD 08)	167,052	297,747	273,582	86,424	114,204
Change	-8.6%	0.5%	8.9%	-7.8%	-15.5%
Average Daily Ridership	628	1,231	1,226	328	397
Days Route Operated	243	243	243	243	243
Revenue Veh. Hours	6,471.0	10,173.0	6,877.4	3,543.2	5,647.2
Previous Year (FYTD 08)	6,888.2	11,738.5	7,222.8	3,512.6	6,096.8
Change	-6.1%	-13.3%	-4.8%	0.9%	-7.4%
Passengers / RVH	23.6	29.4	43.3	22.5	17.1
Previous Year (FYTD 08)	24.3	25.4	37.9	24.6	18.7
Change	-2.7%	15.9%	14.4%	-8.6%	-8.8%
Revenue Vehicle Miles	56,632.4	100,793.9	83,534.8	39,479.4	124,339.2
Passengers / RVM	2.70	2.97	3.57	2.02	0.78
Previous Year (FYTD 08)	2.84	2.74	3.21	2.15	0.85
Change	-5.2%	8.4%	11.1%	-6.0%	-8.5%
One-Way Trips	13,253	21,059	13,659	12,376	8,365
Deadhead Miles	1,706.3	7,852.4	2,980.1	3,042.4	3,191.5
Deadhead Hours	74.35	379.32	121.41	112.14	119.37
Est. Gross Operating Cost	\$707,972	\$1,112,998	\$752,437	\$387,653	\$617,845
Est. Cost Per RVH	\$109.41	\$109.41	\$109.41	\$109.41	\$109.41
Est. Cost Per RVM	\$12.50	\$11.04	\$9.01	\$9.82	\$4.97
Est. Cost Per Passenger	\$4.64	\$3.72	\$2.53	\$4.87	\$6.40

JUL 08 - FEB 09

	ROUTE					
	18	18X	19	21	22	25
Total Ridership	145,078	7,136	29,549	96,715	7,020	39,383
Previous Year (FYTD 08)	159,517	14,888	27,767	104,696	12,407	38,794
Change	-9.1%	-52.1%	6.4%	-7.6%	-43.4%	1.5%
Average Daily Ridership	597	87	139	398	86	193
Days Route Operated	243	82	213	243	82	204
Revenue Veh. Hours	5,516.9	377.2	1,437.1	4,434.0	467.4	1,549.0
Previous Year (FYTD 08)	5,764.2	782.0	1,662.5	4,134.0	969.0	1,527.6
Change	-4.3%	-51.8%	-13.6%	7.3%	-51.8%	1.4%
Passengers / RVH	26.3	18.9	20.6	21.8	15.0	25.4
Previous Year (FYTD 08)	27.7	19.0	16.7	25.3	12.8	25.4
Change	-5.0%	-0.6%	23.1%	-13.9%	17.3%	0.1%
Revenue Vehicle Miles	64,280.5	6,232.0	11,595.2	47,956.7	6,779.8	20,241.7
Passengers / RVM	2.26	1.15	2.55	2.02	1.04	1.95
Previous Year (FYTD 08)	2.41	1.18	2.28	3.11	0.88	1.97
Change	-6.2%	-2.8%	11.8%	-35.2%	17.8%	-1.2%
One-Way Trips	11,448	820	5,726	17,098	984	5,468
Deadhead Miles	4,186.9	1,230.0	1,174.4	2,793.2	2,227.1	851.2
Deadhead Hours	195.15	57.40	44.31	110.81	62.87	32.77
Est. Gross Operating Cost	\$603,589	\$41,268	\$157,229	\$485,116	\$51,137	\$169,471
Est. Cost Per RVH	\$109.41	\$109.41	\$109.41	\$109.41	\$109.41	\$109.41
Est. Cost Per RVM	\$9.39	\$6.62	\$13.56	\$10.12	\$7.54	\$8.37
Est. Cost Per Passenger	\$4.16	\$5.78	\$5.32	\$5.02	\$7.28	\$4.30

JUL 08 - FEB 09

	ROUTE					
	26	37	54	55	56	57
Total Ridership	60,872	22,705	48,558	8,710	85,102	67,580
Previous Year (FYTD 08)	64,263	38,930	52,144	19,287	93,401	64,803
Change	-5.3%	-41.7%	-6.9%	-54.8%	-8.9%	4.3%
Average Daily Ridership	251	194	200	74	350	278
Days Route Operated	243	117	243	117	243	243
Revenue Veh. Hours	2,778.7	1,160.7	2,580.5	828.4	3,158.6	2,615.5
Previous Year (FYTD 08)	2,425.3	2,485.8	1,957.6	1,891.5	3,332.2	2,841.5
Change	14.6%	-53.3%	31.8%	-56.2%	-5.2%	-8.0%
Passengers / RVH	21.9	19.6	18.8	10.5	26.9	25.8
Previous Year (FYTD 08)	26.5	15.7	26.6	10.2	28.0	22.8
Change	-17.3%	24.9%	-29.4%	3.1%	-3.9%	13.3%
Revenue Vehicle Miles	33,112.5	33,440.7	43,218.0	7,473.0	47,835.6	54,554.2
Passengers / RVM	1.84	0.68	1.12	1.17	1.78	1.24
Previous Year (FYTD 08)	1.39	0.56	1.45	1.12	1.83	1.01
Change	32.2%	22.2%	-22.3%	4.0%	-3.0%	22.7%
One-Way Trips	9,198	3,094	6,828	3,428	9,654	8,348
Deadhead Miles	1,308.1	1,289.3	2,293.2	378.2	2,875.8	1,714.1
Deadhead Hours	51.14	42.33	88.40	15.25	102.74	60.86
Est. Gross Operating Cost	\$304,009	\$126,987	\$282,319	\$90,636	\$345,573	\$286,150
Est. Cost Per RVH	\$109.41	\$109.41	\$109.41	\$109.41	\$109.41	\$109.41
Est. Cost Per RVM	\$9.18	\$3.80	\$6.53	\$12.13	\$7.22	\$5.25
Est. Cost Per Passenger	\$4.99	\$5.59	\$5.81	\$10.41	\$4.06	\$4.23

JUL 08 - FEB 09

	ROUTE			
	28	RTC IC	RTC SS	MISC SERVICE
Total Ridership	4,107	37,186	326,563	5,583
Previous Year (FYTD 08)		31,185	295,852	4,803
Change	N/A	19.2%	10.4%	16.2%
Average Daily Ridership	47	220	1,344	798
Days Route Operated	87	169	243	7
Revenue Veh. Hours	349.4	3,143.4	9,585.0	84.0
Previous Year (FYTD 08)		3,892.4	10,356.0	84.0
Change	N/A	-19.2%	-7.4%	0.0%
Passengers / RVH	11.8	11.8	34.1	66.5
Previous Year (FYTD 08)		8.0	28.6	57.2
Change	N/A	47.7%	19.3%	16.2%
Revenue Vehicle Miles	6,612.0	99,598.5	89,821.1	3,356.6
Passengers / RVM	0.62	0.37	3.64	1.66
Previous Year (FYTD 08)		0.28	3.09	2.86
Change	N/A	35.7%	17.7%	-41.9%
One-Way Trips	870	3,042	19,296	672
Deadhead Miles	449.3	4,691.4	5,467.5	250.9
Deadhead Hours	17.17	216.88	255.15	7.00
Est. Gross Operating Cost	\$38,232	\$343,910	\$1,048,666	\$9,190
Est. Cost Per RVH	\$109.41	\$109.41	\$109.41	\$109.41
Est. Cost Per RVM	\$5.78	\$3.45	\$11.68	\$2.74
Est. Cost Per Passenger	\$9.31	\$9.25	\$3.21	\$1.65

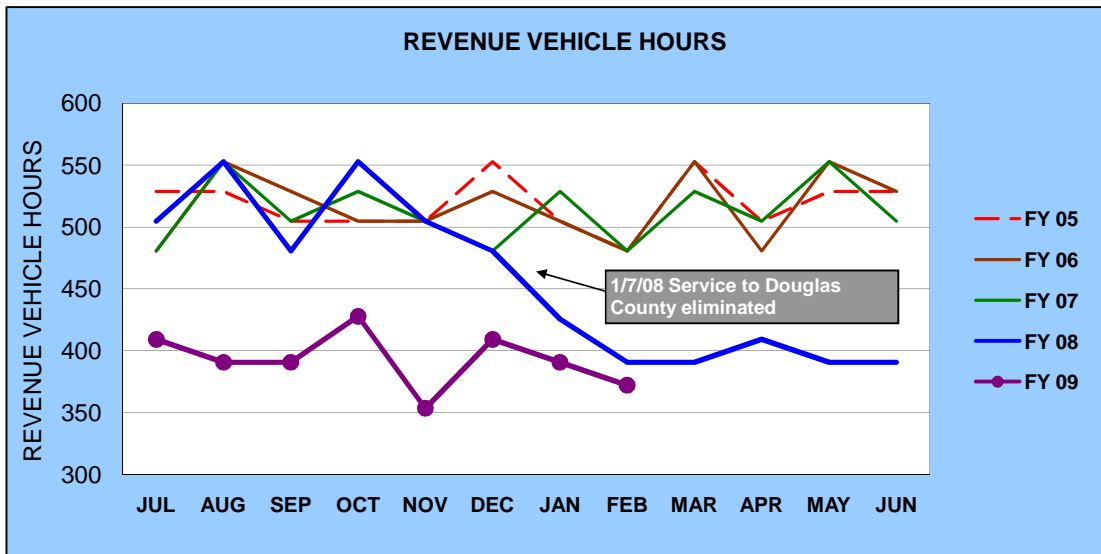
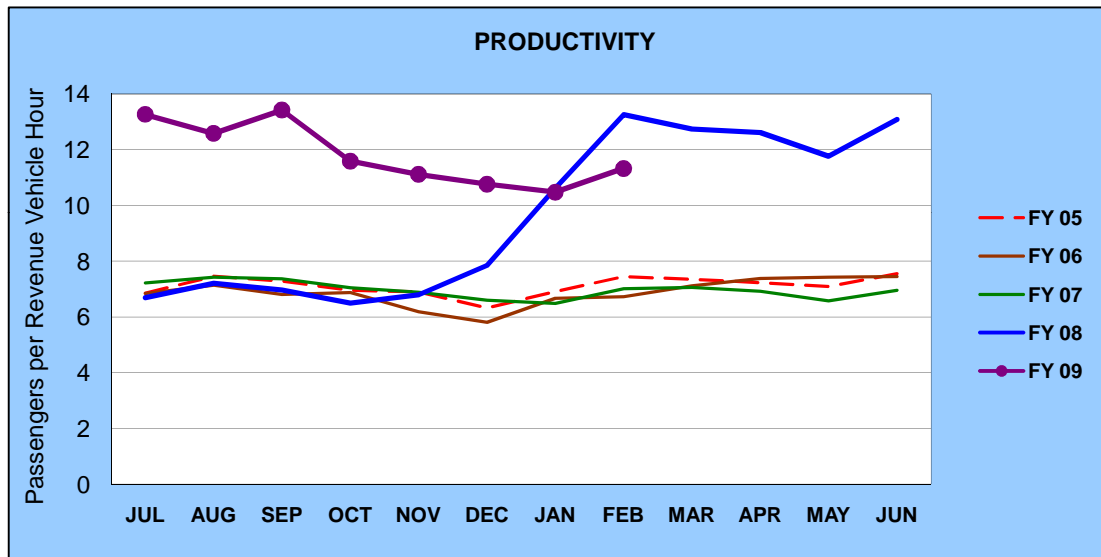
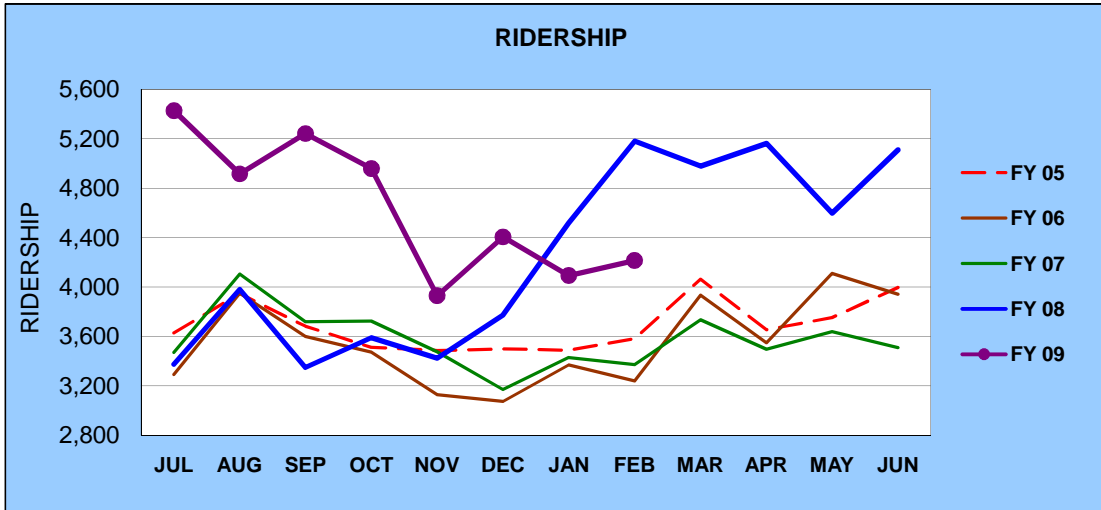
JUL 08 - FEB 09

	SYSTEM TOTALS		PERCENT CHANGE
	FYTD 08	FYTD 07	
Cash Fares			
Adult	838,518	956,669	-12.4%
Youth	235,573	282,647	-16.7%
Senior & Disabled	235,137	220,268	6.8%
Total Cash Fares	1,309,228	1,459,584	-10.3%
Period Pass Fares			
Adult	1,337,875	1,310,297	2.1%
Youth	184,038	119,977	53.4%
Senior & Disabled	1,071,237	1,066,343	0.5%
Total Pass Use	2,593,150	2,496,617	3.9%
Transfers	1,021,272	1,126,621	-9.4%
Flow Through	85,473	98,243	-13.0%
Free Rides	505,493	469,276	7.7%
RTC ACCESS ID Cash	23,846	32,963	-27.7%
Stored Ride Pass/Tickets	325,959	298,658	9.1%
Adult Ridership	3,086,920	3,257,445	-5.2%
Youth Ridership	671,213	688,626	-2.5%
Sen & Dis Ridership	1,600,796	1,566,615	2.2%
Total Ridership	5,864,421	5,981,962	-2.0%
Previous Year (FYTD 08)	5,981,962		
Change	-2.0%		
Average Daily Ridership	24,133	24,516	-1.6%
Days Route Operated	243	244	-0.4%
Revenue Veh. Hours	181,549.8	193,078.5	-6.0%
Previous Year (FYTD 08)	193,078.5		
Change	-6.0%		
Passengers / RVH	32.3	31.0	4.3%
Previous Year (FYTD 08)	31.0		
Change	4.3%		
Revenue Vehicle Miles	2,243,860.6	2,412,608.6	-7.0%
Passengers / RVM	2.61	2.48	5.4%
Previous Year (FYTD 08)	2.48		
Change	5.4%		
One-Way Trips	373,255	411,643	-9.3%
Deadhead Miles	109,426.7	116,482.1	-6.1%
Deadhead Hours	4,350.83	4,615.75	-5.7%
Est. Gross Operating Cost	\$19,862,808	\$18,950,884	4.8%
Est. Cost Per RVH	\$109.41	\$98.15	11.5%
Est. Cost Per RVM	\$8.85	\$7.85	12.7%
Est. Cost Per Passenger	\$3.39	\$3.17	6.9%

RTC Transit Operating Statistics

RTC INTERCITY				
ROLLING 12 MONTH COMPARISON				
Most Recent 12 Months		Percent Change	Previous 12 Months	
Month	Ridership		Month	Ridership
MAR 08	4,978	33.3%	MAR 07	3,734
APR 08	5,164	47.8%	APR 07	3,495
MAY 08	4,597	26.4%	MAY 07	3,637
JUN 08	5,112	45.7%	JUN 07	3,508
JUL 08	5,429	60.9%	JUL 07	3,374
AUG 08	4,916	23.5%	AUG 07	3,980
SEP 08	5,243	56.6%	SEP 07	3,348
OCT 08	4,959	38.2%	OCT 07	3,588
NOV 08	3,928	14.7%	NOV 07	3,424
DEC 08	4,405	16.8%	DEC 07	3,772
JAN 09	4,092	-9.4%	JAN 08	4,518
FEB 09	4,214	-18.7%	FEB 08	5,181
TOTAL	57,037	25.2%	TOTAL	45,559

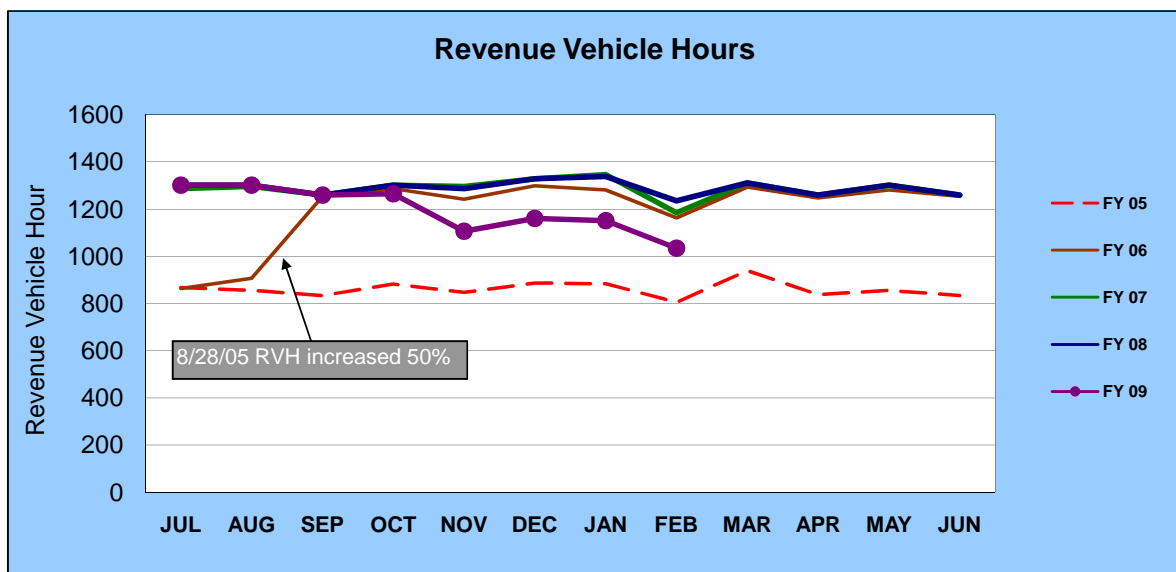
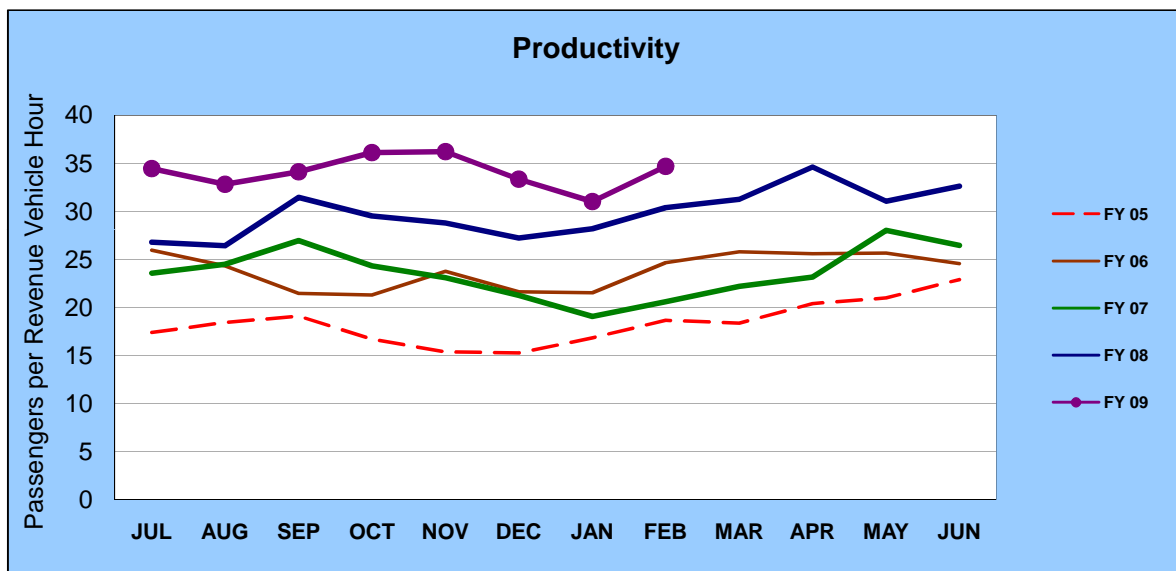
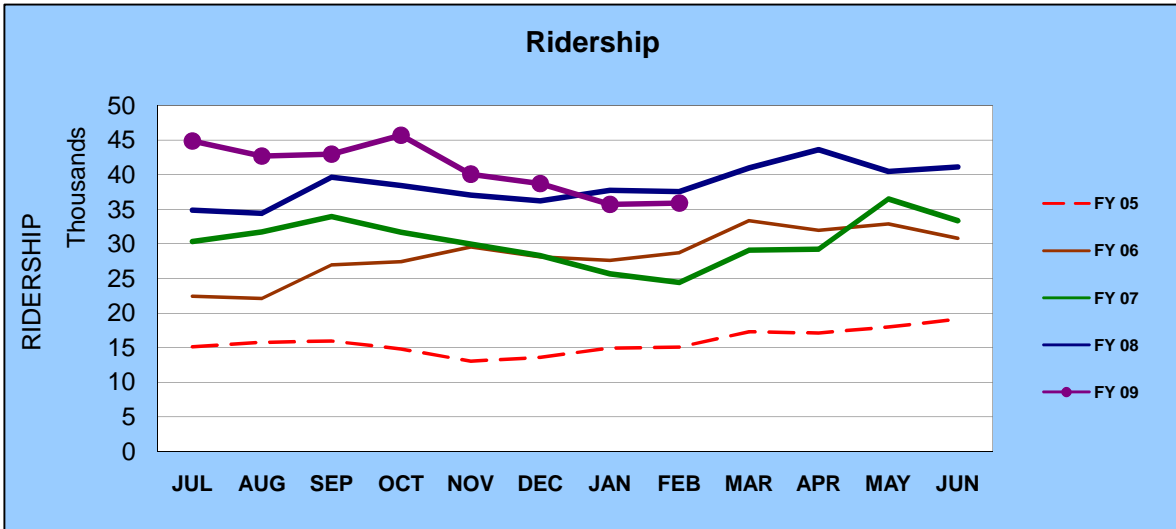
RTC INTERCITY FISCAL YEAR COMPARISONS

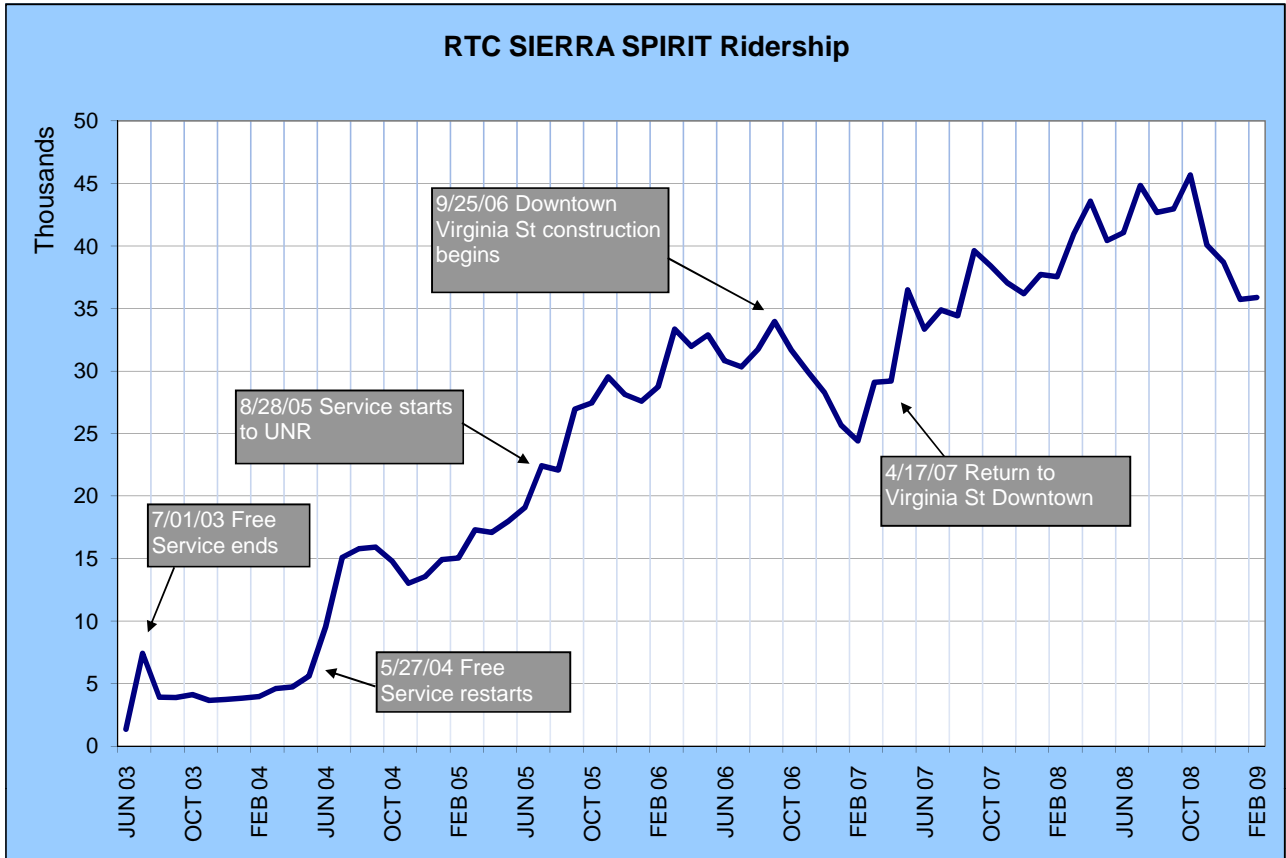


RTC Transit Operating Statistics

RTC SIERRA SPIRIT				
ROLLING 12 MONTH COMPARISON				
Most Recent 12 Months		Percent Change	Previous 12 Months	
Month	Ridership		Month	Ridership
MAR 08	40,963	40.8%	MAR 07	29,095
APR 08	43,583	49.2%	APR 07	29,207
MAY 08	40,432	10.8%	MAY 07	36,501
JUN 08	41,075	23.2%	JUN 07	33,350
JUL 08	44,842	28.5%	JUL 07	34,891
AUG 08	42,698	24.1%	AUG 07	34,411
SEP 08	42,958	8.5%	SEP 07	39,609
OCT 08	45,683	18.9%	OCT 07	38,421
NOV 08	40,074	8.1%	NOV 07	37,057
DEC 08	38,702	6.9%	DEC 07	36,196
JAN 09	35,715	-5.3%	JAN 08	37,719
FEB 09	35,891	-4.4%	FEB 08	37,548
TOTAL	492,616	16.2%	TOTAL	424,005

RTC SIERRA SPIRIT FISCAL YEAR COMPARISONS





RTC OUTREACH SCHEDULE OF MEETINGS MARCH 2009

<u>DATE</u>	<u>TOPIC</u>	<u>ORGANIZATION</u>	<u>RTC STAFF</u>
3/2/2009	RTC 2009 St. Patrick's Day Safe Ride Home Program Launch Actual Dates of Program March 17-19	Community-wide	RTC Marketing
3/2/2009	RTC SMART TRIPS and RTC Transit Services	John Ascuaga's Nugget Employee Benefits Fair	Carol Perry
3/4/2009	Pyramid Highway/US 395 Connection Project	Community Open House @ Lazy 5 Community Center, Sparks	Doug Maloy Michael Moreno Felicia Archer Project Consultants
3/5/2009	Transit Field Trip to RTC CITICENTER and Facility Operations	Hidden Valley Elementary School 3rd Grade Class	Brenda Hill Tim Goble
3/9/2009	2009 Road Projects and RTC-5 Accelerated Projects	Washoe County North Valleys CAB	Garth Oksol
3/10/2009	Transit Field Trip to RTC CITICENTER and Facility Operations	High Desert Montessori School 3rd Grade Class	Rochelle Olson Robert Roth
3/11/2009	Transit Field Trip to RTC CITICENTER and Facility Operations	Brown Elementary School 3rd Grade Class	Rochelle Olson Robert Roth
3/11/2009	2009 Road Projects and RTC-5 Accelerated Projects	Washoe County Spanish Springs CAB	Doug Maloy
3/16/2009	2009 Road Projects and RTC-5 Accelerated Projects	City of Reno Ward 4 North Valleys NAB	Garth Oksol
3/17/2009	Senior Ridership Development and Outreach	Reno Senior Center	Sue Sherman
3/18/2009	Peckham Lane Rehabilitation Project	Peckham Lane Neighborhood Meeting @ Pin Middle School	Warren Call
3/18/2009	RTC Ballot Measures, Service Cuts and Fare Increases 2009 Road Projects and RTC-5 Accelerated Projects	Washoe County Central CAB	Derek Morse
3/18/2009	2009 Road Projects and RTC-5 Accelerated Projects	Washoe County Southeast Truckee Meadows CAB	Brenda Lee
3/19/2009	Senior Ridership Development and Outreach	Residents of Sierra Crest Senior Apartment Homes	Sue Sherman
3/19/2009	RTC ACCESS (Discussed Ticket Donation)	City of Reno Ward 5 Northwest NAB	David Jickling Mary Bryant CitiCare
3/24/2009	Transit Field Trip to RTC CITICENTER and Facility Operations	Spanish Springs Elementary School	Durel Wiley

3/24/2009	Intelligent Transportation Systems Lecture	3rd Grade Class UNR Civil Engineering Class	Butch Dickman Jim Poston
3/24/2009	Travel Training Field Trip to RTC CENTENNIAL PLAZA Tour RIDE ID Cards w/ No. NV Center for Independent Living	No. NV Medical Center Senior Bridges Program	Sue Sherman Blossom Javier NNCIL
3/25/2009	Senior Ridership Development and Outreach	Residents of Carriage Stone Senior Apartments	Sue Sherman
3/31/2009	Transportation Lecture	UNR Urban Economics Class	Jack Lorbeer
3/31/2009	RTC SMART TRIPS and RTC Transit Services	Morrison University	Carol Perry

RTC Media Report for March 2009

Press Releases

- 3/2 "RTC Employees Behave Like Kids for a Cause"
- 3/3 "Open House for Pyramid-US 395 Connection Study Project"
- 3/5 "Russians Coming to RTC for Planning Exchange"
- 3/5 "Sponsors Underwrite RTC RIDE St. Patrick's Day Safe Ride Home"
- 3/16 "RTC SIERRA SPIRIT Not Extended for Game"

Media Interviews/Contacts

- 3/2 KTVN, service changes
- 3/3 KTVN, RTC ACCESS customers
- 3/3 KTVN, stimulus
- 3/4 KRNV, ice detours
- 3/4 KOLO, ice detours
- 3/4 KTVN, ice detours
- 3/4 RGJ, ice detours
- 3/4 ALICE 96.5, St. Pat's free passes
- 3/4 KOLO, Pyramid meeting
- 3/4 KRNV, Pyramid meeting
- 3/5 RGJ, Editorial Board on RTC-5
- 3/6 RGJ, Russians at planning
- 3/6 KRNV, Russians at Planning
- 3/9 Sparks Tribune, TMCC buses on ice
- 3/9 APTA (industry publication), CitiCare group
- 3/10 RGJ, Salaries
- 3/10 RGJ, SB201
- 3/10 RGJ, Stimulus
- 3/12 KRNV, Board meeting agenda
- 3/12 KRNV, NDOT stimulus
- 3/12 KTVN, St. Pat's Day free passes
- 3/12 RGJ, salaries and privatization savings
- 3/16 KTVN, St. Pat's free passes
- 3/16 APTA (industry publication), stimulus and buses
- 3/18 RGJ, Editorial Board on SB 201
- 3/18 RGJ, Your Turn on 4th Street Station
- 3/18 RGJ, RAPID
- 3/22 KOLO, RTC 4th Street rendering
- 3/23 KUNR, SB201
- 3/24 USA TODAY, paratransit cuts
- 3/24 RGJ, County action on RTC-5
- 3/25 USA TODAY, paratransit ridership
- 3/25 KTVN, Facebook and human resources in govt.
- 3/26 RGJ, SB201
- 3/27 KRNV, Board retreat agenda
- 3/30 KOLO, Southeast Connector
- 3/31 USA TODAY, RTC ACCESS cuts

3/31 Nevada Business Journal, Stimulus Funding

Media Articles: Web/Print

- 3/1 Las Vegas Review Journal, "ROAD WARRIOR: 'Shovel ready' projects tilt money north"
- 3/1 RGJ "Rec center expands to accommodate seniors" (RTC ACCESS mention)
- 3/1 RGJ, "North-South rivalry simmers at capitol"
- 3/1 RGJ, "Editorial: Regionalism will affect lawmaking this year"
- 3/2 Northern Nevada Business Weekly, "Oksol Earns Award"
- 3/2 RGJ, "RTC financial analyst earns credential"
- 3/2 KTVN, "RTC Implements Latest Series of Cutbacks"
- 3/3 RGJ "Meeting set on Pyramid Highway future"
- 3/3 RGJ "Public meeting Wednesday to discuss Pyramid-U.S. 395 connection"
- 3/3 KTVN, "Stimulus Money to Help South Reno Road Project"
- 3/4 KRNV, "Winter weather stalls and closes schools"
- 3/4 RGJ "Planners weigh fate of Pyramid Highway"
- 3/4 KTVN, "RTC Trying to Ease Congestion in Busy Sparks Intersection"
- 3/4 KTVN, "Possible Solution to Congestion on McCarran & Pyramid"
- 3/4 KRNV, "RTC showcases solutions to Pyramid Highway traffic"
- 3/5 Reno News & Review, "Dachshund Bus" (photo of RTC RIDE articulated bus)
- 3/5 Las Vegas Review-Journal, "Road project funding detailed: Clark County will get \$109 million"
- 3/6 Sparks Tribune, "RTC reviews Pyramid Hwy. plans with residents"
- 3/6 metromix.com "Get a free RTC ride for St. Patrick's Day"
- 3/7 RGJ "Russian Planners Learn from RTC"
- 3/9 Sparks Tribune, "RTC buses to TMCC have resumed service"
- 3/10 RGJ "Council to consider ballpark incentives" (RTC CITICENTER mention)
- 3/10 RGJ "Washoe County in line for \$27 million for road projects"
- 3/10 RGJ "Nevada stands to gain \$100 million in big federal spending bill"
- 3/11 RGJ "RTC top officials to take pay cut"
- 3/11 Nevada Appeal, "Lawmakers debate stimulus funds"
- 3/11 RGJ "Reno council bolsters efforts around baseball stadium" (RTC CITICENTER mention)
- 3/11 Sparks Tribune, "Pyramid Hwy., land use plans to be discussed at Spanish Springs CAB meeting"
- 3/12 Las Vegas Sun, "This time, Clark County tops state list for road projects"
- 3/12 RGJ, "Bill would enact voter-approved RTC gas-tax increases"
- 3/12 Nevada Appeal "Legislative Brief: Rainy Day fund; tax plans; finance statements; toll road"
- 3/12 RGJ.com, "New RTC Salary Info online"
- 3/12 KTVN, "DUI Checkpoints or Saturation Patrols on St. Patrick's Day?"
- 3/12 KRNV, "RTC's project to receive majority of transportation stimulus"
- 3/12 Sparks Tribune, "Spanish Springs CAB looks for new member" (Pyramid/McCarran mention)
- 3/12 KRNV, "RTC's project to receive majority of transportation stimulus"
- 3/13 RGJ, "Ethics panel to weigh in on election mailers"
- 3/13 RGJ, "Officials focus on mall interchange stimulus funding"
- 3/13 RGJ, "Passes available for free holiday bus rides"
- 3/13 RGJ, "Oksol named Young Engineer of the Year"
- 3/13 Las Vegas Review-Journal, "Agency hits the road with stimulus funding"

3/17 KRVN, "RTC offers free bus passes"
 3/17 KTVN, "St. Patrick's Day" (Trooper Chuck interview)
 3/17 KRVN, "Saint Patrick's Day fun and precautions"
 3/19 RGJ, "Editorial: Meadowood interchange is right project for stimulus funds"
 3/19 RGJ, "Roger Vogel: Public transportation faces funding challenges"
 3/19 Ely Times, "Nevada to use \$201,000,000 for various paving projects"
 3/20 RGJ, "Sibayan Recreation Center Designated as an Official 'Safe Place' "
 3/23 RGJ, "DUI suspect hits Reno man at bus stop"
 3/25 RGJ, "Editorial: Lawmakers should support Washoe gas-tax hike"
 3/26 RGJ, "Washoe starts long process for road projects"
 3/26 RGJ, "Lawmakers consider Washoe County gas tax increase"
 3/26 Reno Sparks Chamber of Commerce Blog, "Packed Hearing Room for SB201"
 3/27 KRVN, RTC Budget Meeting
 3/27 KBZZ, Dave Aiazzi interviewed on Cory Farley's show
 3/30 Northern Nevada Business Weekly, "Federal funding to revive construction"
 March 2009 Senior Spectrum "RTC ACCESS Fare Increase"

"The Road Ahead" Interviews on KOLO-TV

- *March 3: Open House Scheduled for Pyramid-US 395 Connection Project*
 Doug Maloy discussed the upcoming public open house for a possible new connection to U.S. 395 on the north side of town.
- *March 10: St. Patrick's Day Safe Ride Home Program*
 Connie Wray, the radio voice of "Bill and Connie" on ALICE 96.5 told viewers how we could all make it a safe celebration by thinking green and riding blue on St. Patrick's Day.
- *March 17: Turn Your Commute into a Service for the Community*
 Carol Perry shared a transportation idea that could help others in need and even save someone's job.
- *March 24: Building New Jobs in Downtown Reno*
 Chris Tschirhart revealed good news about how federal funding will soon bring a much needed new transit facility to downtown Reno.
- *March 31: RTC-5 / SB 201 Progress*
 Derek Morse updated viewers on the progress of SB 201 through the Nevada legislature.