



e-News Board Update

RTC Commissioners,

Your Sept. 30, 2011, RTC enews includes an update on Moana Lane, a decision on the Southeast Connector, public involvement opportunities for the transit system analysis, safe walking, and TSA training. Please call me with any questions you may have.

Access Archived Editions of RTC's [e-News Briefs](#).
View upcoming [RTC Board, Advisory Committee meetings and events](#),
Stay up-to-date on RTC projects and programs by subscribing to



at www.rtcwashoe.com.

Lee G. Gibson, AICP, Executive Director
Ph: 775.348.0400 Fax: 775.324.3503
E-mail: lgibson@rtcwashoe.com

PLANS PROGRESS ON PROJECT TO WIDEN MOANA LANE

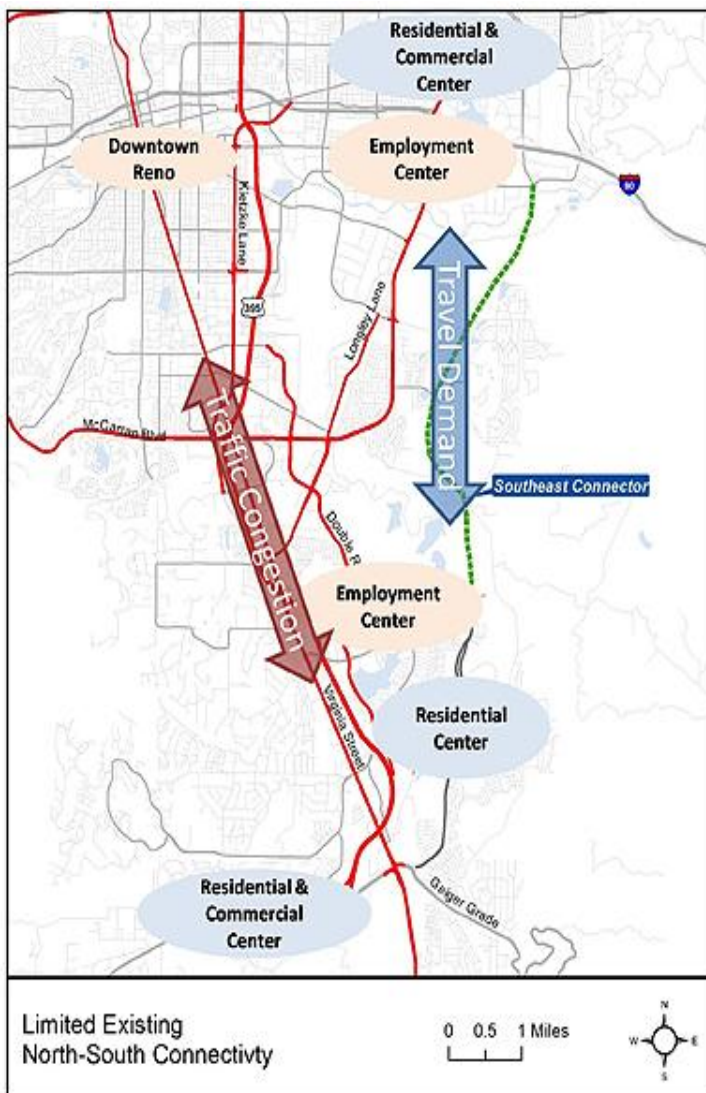


The Moana Lane widening project took another step forward in September as bids were received to begin the building demolition phase. The RTC expects to administer the contract in two phases to accommodate property acquisitions and tenant relocations now underway. The first phase will begin

this month and could be completed in January 2012. The second is set to begin in March 2012 and take approximately 20 working days to complete. A total of 12 buildings on 9 different sites will be removed to accommodate the road improvements. Utility relocation work will be underway through the first quarter of 2012. Road construction will follow in April and the project could be complete by the end of 2012.

The project will widen Moana Lane to six lanes from Virginia Street to I-580/U.S. 395. The project's purpose is to reduce existing congestion and provide future capacity for this important resort and commuter corridor. Please contact Doug Maloy, RTC project manager, at 335-1865.

ONE STEP CLOSER, THE SOUTHEAST CONNECTOR IS JUST AROUND THE CORNER



The RTC approved \$6.0 million for the City of Reno to mitigate the Southeast Connector's impact to the Rosewood Lakes Golf Course. The City of Reno intends to use the money to pay off a golf course bond, purchase land for new holes, and construct replacement holes being taken by the roadway. Because of a need to keep the golf course open and meet the accelerated construction schedule, it is important that the RTC and City of Reno move forward now.

The Southeast Connector, when completed, will be a 9 1/2 mile north-south roadway connecting Sparks Boulevard to the Veterans Parkway Geiger Grade roundabout. Veterans Parkway from the Geiger Grade roundabout to its northern terminus, a distance of 4 miles, is already constructed and open to the public. RTC is moving forward with the construction of the remaining 5 1/2 miles of new road that will "fill in the gap" to Sparks Boulevard. RTC studies and plans show a lack of north-south connectivity east of U.S. 395 which limits access between residential and employment centers along I-80 and Double R Boulevard (see the above exhibit).

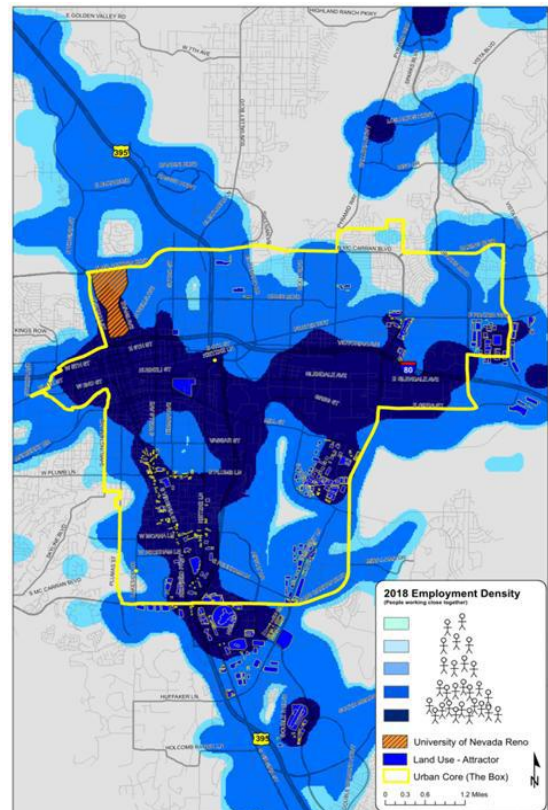
RTC is working very closely with a number of federal, state and local partners. Staff is now working with the U.S. Army Corps of Engineers to review comments on the Section 404 permit application. Through the RTC's planning program, the U.S. Federal Highway Administration has recognized the Southeast Connector as an example of innovative sustainable transportation design. When completed, the Southeast Connector is expected to be a national example of how roadway design

and function can improve the environment, promote the quality of life, and provide mobility to support economic growth. The Southeast Connector is one of the biggest projects ever undertaken by the RTC and is expected to cost approximately \$170 million. For further information, please contact Garth Oksol, RTC project manager, at 332-2137.

PUBLIC INPUT SOUGHT AT TRANSIT OPEN HOUSES OCTOBER 6 AND 7

The RTC is continuing to look at ways to improve the RIDE public transit service. For the past year, staff and consultants have been conducting the Transit System Analysis (TSA) project, to look at the existing route structure and service patterns and develop alternative ways to meet the needs of the community. After receiving direction from the RTC board, two service options will be presented to the public. One would shift service hours to the most productive routes and the other would streamline routing for much of the system. Both are based on improving overall customer service and productivity.

Both of these, concepts will be presented at a public open house scheduled from 7 a.m. to 7 p.m. at RTC 4TH STREET STATION on Oct. 6. A second open house will be Oct. 7 from 2 to 5 p.m. at RTC CENTENNIAL PLAZA. The final plans will be shared with the advisory committees and brought back to the board later this fall for potential adoption at a public hearing.



The RTC started the TSA with the expectation that 2011 would likely bring service reductions throughout the system because of the continued financial challenges stemming from declining revenues and increasing fuel prices. However, with the slightly improving economy, the moderation in fuel prices, and the new turnkey contract for the operation and maintenance of RIDE, RTC is in a position to maintain current service levels over the short term.

Roger Hanson is the RTC project manager and can be reached at 335-1901.

RTC PARTNERS WITH SAFE ROUTES TO SCHOOL



Safe Routes to School (SRTS) is a program for students in grades K-8 to make walking and bicycling to school safer for children and to increase the number of children who choose to walk or bicycle.

The Safe Routes to School program hosted a workshop on Sept. 27 at Lena Juniper Elementary School to assist local schools in developing SRTS plans and programs. Hosted by Officer M.J. Cloud of the Washoe County School District Police Department and Rebecca Kapuler, State Safe Routes to School coordinator, the workshop focused on education about the benefits of walking and biking to school, strategies to encourage kids to walk or bike, and engineering solutions to promote traffic safety around schools.

Safe Routes to School is a program to make walking and bicycling to school safer for children and to increase the number of children who choose to walk or bicycle. The RTC is working with the group and its partners who include Washoe County School District, the Nevada Department of Transportation, and others from local agencies, engineering, law enforcement and safety, groups, along with teachers, principals, and parents.



The goal is to help with the Safe Routes to School Plan, a document describing a school community's intentions for making active transportation to and from school more sustainable and safer for students and the community. The partners met Sept. 27 to work on the plan during a community workshop.

RTC SAFETY AND SECURITY UNIT TEAMS UP WITH NAVY IN BOMB SQUAD TESTING



In cooperation with the Transportation Security Administration, the RTC was a participant in a training event called Bomb Squad Response to Transportation Systems. The training took place in the RIDE maintenance facility located at the Villanova Administration Building in September.

The course introduced bomb technicians to the various environments encountered in the transportation world through a series of lectures, demonstrations, and realistic, practical exercises. The RTC provided coaches for use during the training. Participating agencies included the United States

Navy Explosive Ordnance Disposal Unit from Fallon, Washoe County Consolidated, South Lake Tahoe, and Elko County bomb squads.

The Transportation Security Administration and the RTC simulated bomb activity using RTC RIDE coaches while the squads employed various techniques and tactics to cope with the simulated bomb threat. One technique employed the use of a robot designed to examine suspected packages and to explore various possibilities remotely.

