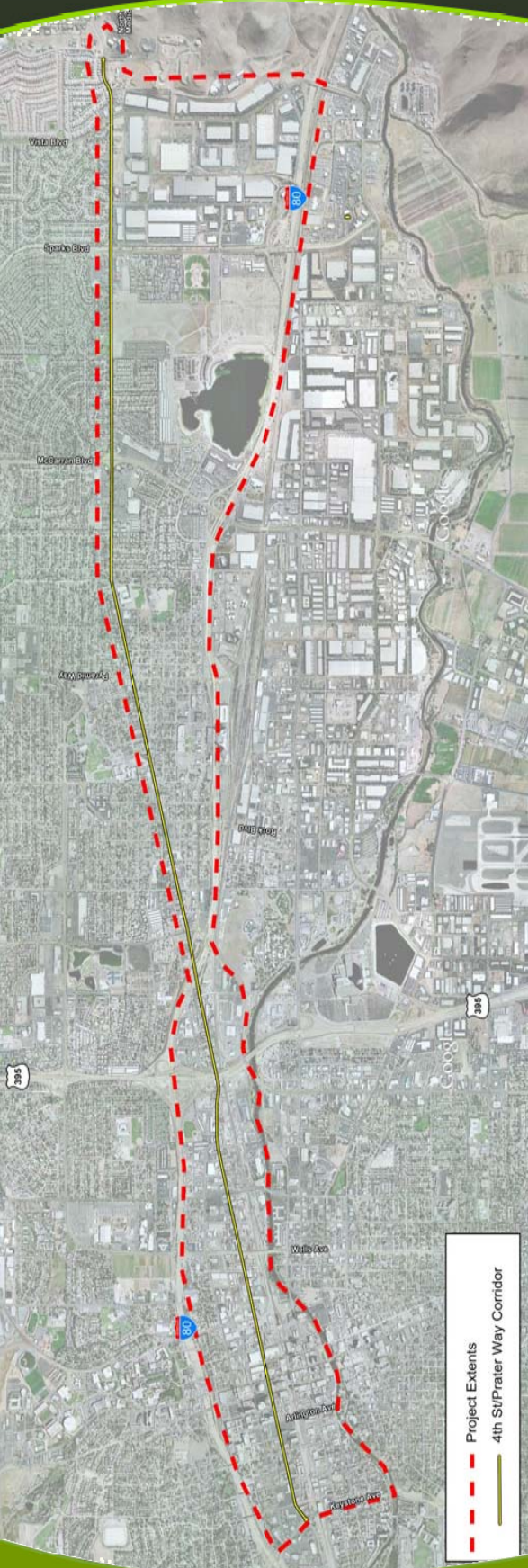


# 4th Street/Prater Way Corridor Study

## FACT SHEET



### PURPOSE

The purpose of the study is to identify multimodal transportation (bike, pedestrian, transit, auto) issues and solutions in the 4th Street/Prater Way corridor. The study will be integrated with economic development initiatives currently underway in the Cities of Reno and Sparks.

### PROJECT AREA

The corridor extends from Keystone Avenue on the west to Northern Nevada Medical Center to the east. The overall study limits include the area between Interstate 80 and the Truckee River within the City of Reno and the area two blocks north of Prater Way to Interstate 80 in the City of Sparks.

### WORK IN PROGRESS

To date, the project team has completed a walking audit of 4th Street, Prater Way, Lincoln Way, and Victorian Avenue. Additionally, pedestrian, bicycle and wheelchair counts have been performed at nine (9) locations throughout the corridor. This information is being tabulated and will provide baseline data for creation of multi-modal planning scenarios. The project team has conducted driving audits and interviews with the staff members from City of Sparks and City of Reno Redevelopment Agencies. These interviews will assist the team in developing future case land use scenarios for use in testing transportation alternatives.

### UPCOMING EFFORTS

The first Public Open House is scheduled for Thursday, September 15th from 4:00-7:00 p.m. at Robert Mitchell Elementary School. Robert Mitchell is located on the corner of Prater Way and 12th Street. Please plan on coming and sharing your ideas!

### HOW CAN I GET INVOLVED?

Please check the website for more information on meeting dates, times and locations, or contact the project team directly:

### PROJECT CONTACTS

Christina Leach, AICP — RTC  
(775) 335-1916  
cleach@rtcwashoe.com

Andy Durling, AICP — Wood Rodgers  
(775) 823-5211  
adurling@woodrogers.com